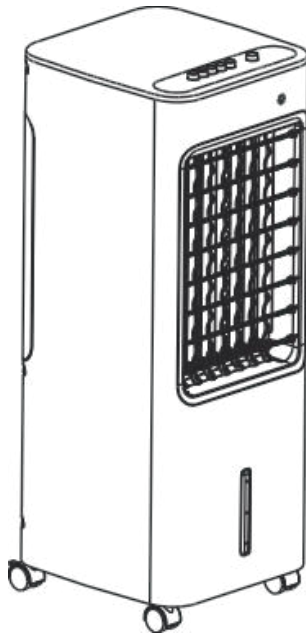




OWNER'S MANUAL

AIR COOLER
MODEL: AC100-18B




READ AND SAVE THESE INSTRUCTIONS

Attention: Pictures in the IM are for reference only.

SAFETY INSTRUCTION

1. If the supply cord is damaged, it must be replaced by manufacturer, its service agent or a similarly qualified person in order to avoid a hazard.
2. This appliance is not intended for use by persons (including children) with reduced physical, sensory or mental capabilities, or lack of experience and knowledge, unless they have been given supervision or instruction concerning use of the appliance by a person responsible for their safety. Children should be supervised to ensure that they do not play with the appliance.
3. Unplug the appliance during filling and cleaning.
4. Prior to cleaning or other maintenance, the appliance must be disconnected from the supply mains.
5. Correct Disposal of this product

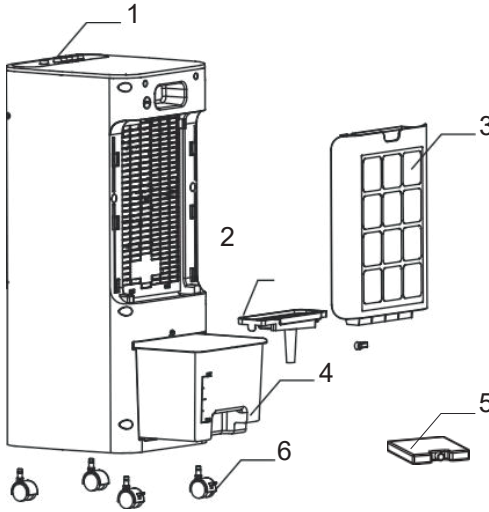


This marking indicates that this product should not be disposed with other household wastes throughout the EU. To prevent possible harm to the environment or human health from uncontrolled waste disposal, recycle it responsibly to promote the sustainable reuse of material resources. To return your used device, please use the return and collection systems or contact the  retailer where the product was purchased. They can take this product for environmental safe recycling.

6. **CAUTION:** In order to avoid a hazard due to inadvertent resetting of the thermal cut-out, this appliance must not be supplied through an external switching device, such as a timer, or connected to a circuit that is regularly switched on and off by the utility .

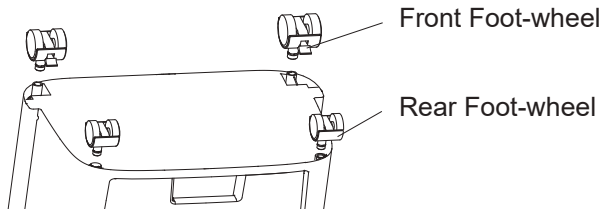
INSTALLATION INSTRUCTIONS

Name of components



NO.	Description
1	Key
2	Water tank cover
3	Honeycomb Filter
4	Water tank
5	Ice Box
6	Universal Wheel

Foot-Wheel Installation



INSTRUCTIONS FOR USE

Instructions for operation of body



INSTRUCTIONS FOR USE

Instructions for operation of body

Press a key on the unit to activate a corresponding function.

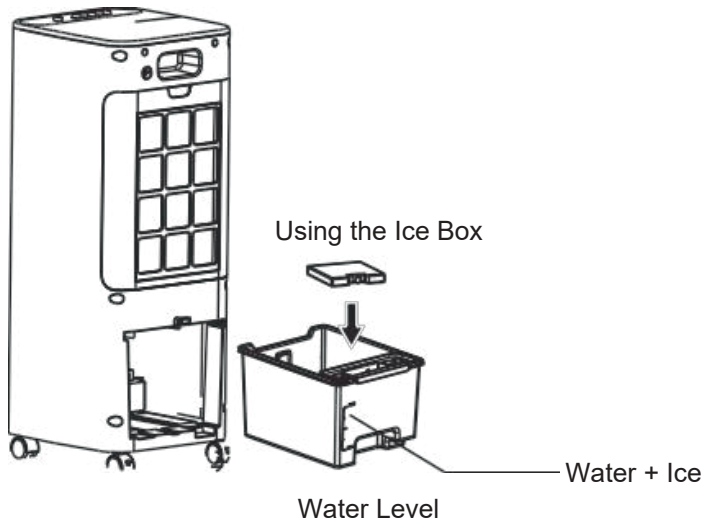
For instance:

Press [OFF] Key to activate or deactivate OFF Function.

Press [LOW], [MED], [HIGH] Keys to adjust fan speed.

Press [OSC.] Key to activate or deactivate Swing Function.

Press [COOLER] Key to activate or deactivate COOLER Function.



Considerate Hint:

When humidifying, water level in the Water Tank must remain under MAX indication; replenish water if level gets lower than MIN indication.

Directions for use

Guidelines for water filling and cleaning of water tanks

Please clean the water on the bottom of the water tank in time

Please unplug the power plug when adding water and cleaning.

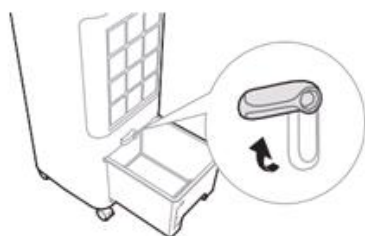
Before starting up, make sure the pump module is fixed in place, if the pump module is placed randomly, it may lead to abnormal product humidification

There are two ways to add water:

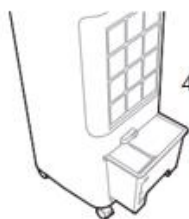
1. Drain half water tank (pump module not removed), add water directly
2. After detaching the pump module, pump the water tank to add water or clean it

Directions for use

Guidelines for water filling and cleaning of water tanks

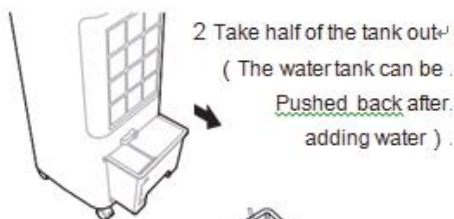


- 1 Push the water tank button out to horizontal state.

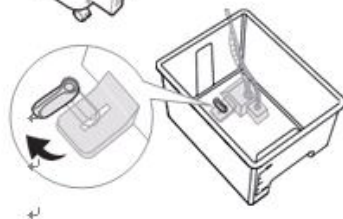


- 4 After slowly pulling out the water tank, clean and add water to the water tank.

- 5 After cleaning and adding water to the water tank, push it into the water tank and fix the pump module, Lock the water tank with the knob.



- 2 Take half of the tank out.
(The water tank can be Pushed back after adding water) .



- 3 Turn the knob off by hand,
(According to the 90 ° counterclockwise) Separate the water tank from the pump module.
(Including the pipe) .

MAINTENANCE INSTRUCTION

The fan requires little maintenance. Do not try to fix it by yourself. Refer it to qualified service personnel if service is needed.

1. Before cleaning and assembling, fan must be unplugged.
2. To ensure sufficient air supply, the honeycomb filter and dust filter shall be cleaned regularly.
3. Please wipe the exterior parts with a soft cloth soaking a mild detergent.
4. Do not use any abrasive detergent or solvents to avoid scratching the surface.
Do not use any of the following as a cleaner: gasoline, thinner.
5. Do not allow water or any other liquid into the motor housing or interior parts.

CLEANING

1. Be sure to unplug from the electrical supply source before cleaning.
2. Plastic parts should be cleaned with a soft cloth moisten with mild soap. Thoroughly remove soap film with dry cloth.