

TABLE BLENDER

USER MANUAL

BL1190 (6118)

Warning notices: Before using this product, please read this manual carefully and keep it for future reference. The design and specifications are subject to change without prior notice for product improvement. Consult with your dealer or manufacturer for details.

The diagram above is just for reference. Please take the appearance of the actual product as the standard.

THANK YOU LETTER

Thank you for choosing Midea! Before using your new Midea product, please read this manual thoroughly to ensure that you know how to operate the features and functions that your new appliance offers in a safe way.

EN

CONTENTS

THANK YOU LETTER	01
SAFETY INSTRUCTIONS	02
SPECIFICATIONS	06
PRODUCT OVERVIEW	07
OPERATION INSTRUCTIONS	08
CLEANING AND MAINTENANCE	13
TROUBLESHOOTING	14
TRADEMARKS, COPYRIGHTS AND LEGAL STATEMENT	15
DISPOSAL AND RECYCLING	16
DATA PROTECTION NOTICE	17







SAFETY INSTRUCTIONS

EN

Intended Use

The following safety guidelines are intended to prevent unforeseen risks or damage from unsafe or incorrect operation of the appliance. Please check the packaging and appliance on arrival to make sure everything is intact to ensure safe operation. If you find any damage, please contact the retailer or dealer. Please note modifications or alterations to the appliance are not allowed for your safety concern. Unintended use may cause hazards and loss of warranty claims.

Explanation of Symbols

	Danger This symbol indicates that there are dangers to the life and health of persons due to extremely flammable gas.
	Warning of electrical voltage This symbol indicates that there is a danger to life and health of persons due to voltage.
	Warning The signal word indicates a hazard with a medium level of risk which, if not avoided, may result in death or serious injury.
	Caution The signal word indicates a hazard with a low degree of risk which, if not avoided, may result in minor or moderate injury.
	Attention The signal word indicates important information (e.g. damage to property), but not danger.
	Observe instructions This symbol indicates that a service technician should only operate and maintain this appliance in accordance with the operating instructions.

Read these operating instructions carefully and attentively before using/commissioning the unit and keep them in the immediate vicinity of the installation site or unit for later use!

IMPORTANT SAFETY INSTRUCTIONS

To avoid the risk of serious injury when using your table blender, basic safety precautions should be followed, including the following.

EN READ ALL INSTRUCTIONS, SAFEGUARDS, AND WARNINGS BEFORE OPERATING BLENDER

- There is a potential injury from misuse. Please handle it with care.
- Always disconnect the appliance from the supply if it is left unattended and before assembling, disassembling or cleaning.
- This appliance shall not be used by children. Keep the appliance and its cord out of children reach.
- Appliances can be used by persons with reduced physical, sensory or mental capabilities or lack of experience and knowledge if they have been given supervision or instruction concerning use of the appliance in a safe way and if they understand the hazards involved.
- Children shall not play with the appliance.
- Be careful when handling the sharp cutting blades, emptying the bowl and during cleaning.
- Be careful if hot liquid is poured into blender as it can be ejected out of the appliance due to a sudden steaming.
- Switch off the appliance and disconnect from supply before changing accessories or approaching parts that move in use
- This appliance is intended to be used in household and similar applications such as:
 - Staff kitchen areas in shops, offices and other working environments;

- Farm houses;
- By clients in hotels, motels and other residential type environments;
- Bed and breakfast type environments.
- This appliance conforms to EC Regulation 1935/2004 on materials and articles intended to come into contact with food.
- If the supply cord is damaged, it must be replaced by the manufacturer, its service agent or similarly qualified persons in order to avoid a hazard.

CAUTION

- In order to avoid a hazard due to inadvertent resetting of the thermal cut-out, this appliance must not be supplied through an external switching device, such as a timer, or connected to a circuit that is regularly switched on and off by the utility. (for MTP version motor)

**SAVE THESE INSTRUCTION.
THIS UNIT IS INTENDED FOR HOUSEHOLD USE ONLY.**

CAUTION

- Ensure that the blender is switched off before removing
- The failure to follow any of the important safeguards and the important instructions for safe use is a misuse of your hand blender that can void your warranty and create the risk of serious injury.

SAFETY SYSTEM





This appliance is equipped with motor thermal protector. If the appliance overheats, it switches off automatically. Unplug the appliance and let it cool down until room temperature then put the mains plug back into the power outlet and switch on the appliance again. Please contact your dealer or an authorized service center if it is activated too often .(for MTP)

SPECIFICATIONS

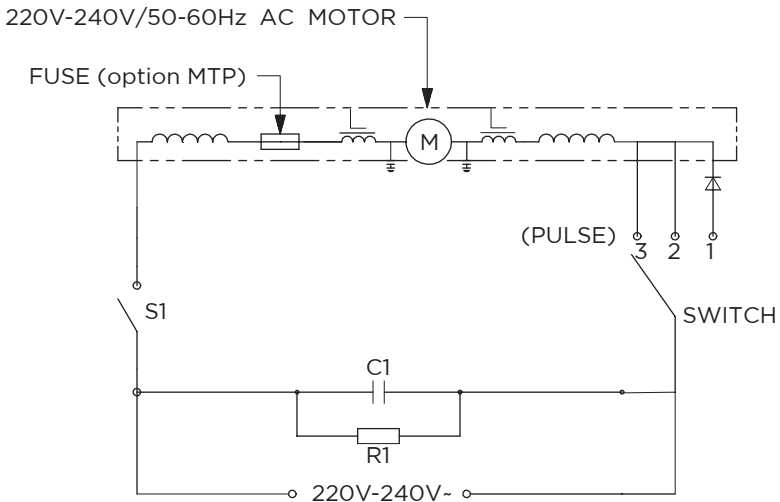
Model No.	BL1190 (6118)
Rated voltage	220-240V-
Rated frequency	50-60Hz
Rated power	750W

EN

Model

Product name	Main unit	Glass jug	Plastic jug	Grinder	Motor information
PIC					
BL1190	✓	✓			Fuse (Option MTP)
BL1190 A	✓		✓		Fuse (Option MTP)
BL1190 B	✓	✓		✓	MTP
BL1190 C	✓		✓	✓	MTP

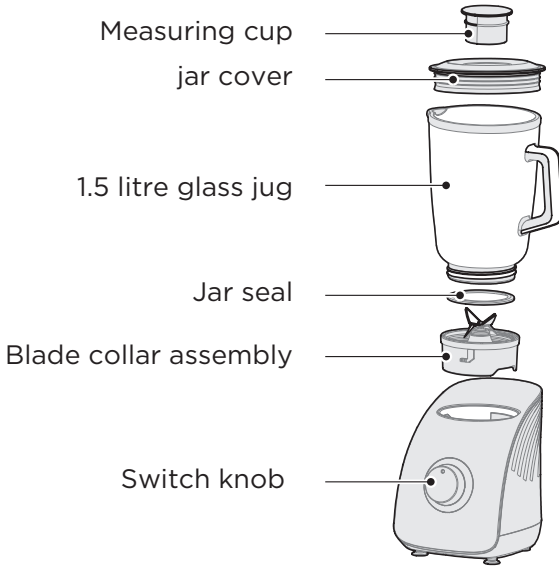
Circuit Principle Diagram



PRODUCT OVERVIEW

Part Name

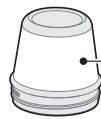
EN



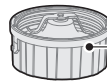
Accessories (Optional)



1.5 litre plastic jug



Glass Grinder Jar



Grinder blade system

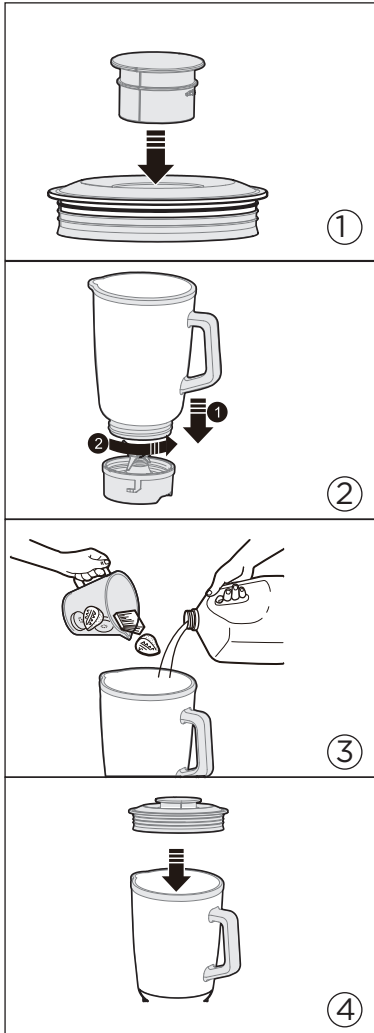
Grinder

NOTE

The figure below is for reference only, and the details are subject to the actual objects in the packaging box.

OPERATION INSTRUCTIONS

Instructions for Use



Before First Use

- Before using your blender for the first time, remove any packaging material and promotional labels.
- Be careful when handling the blades as they are extremely sharp.
- Wash the jug, lids, blade assembly and attachments in warm soapy water with a soft cloth. Rinse and dry thoroughly. All parts (except motor base) may be washed in the dishwasher, on the top shelf.

EN

Functions (Speed)

MOTOR BASE SPEED CONTROL

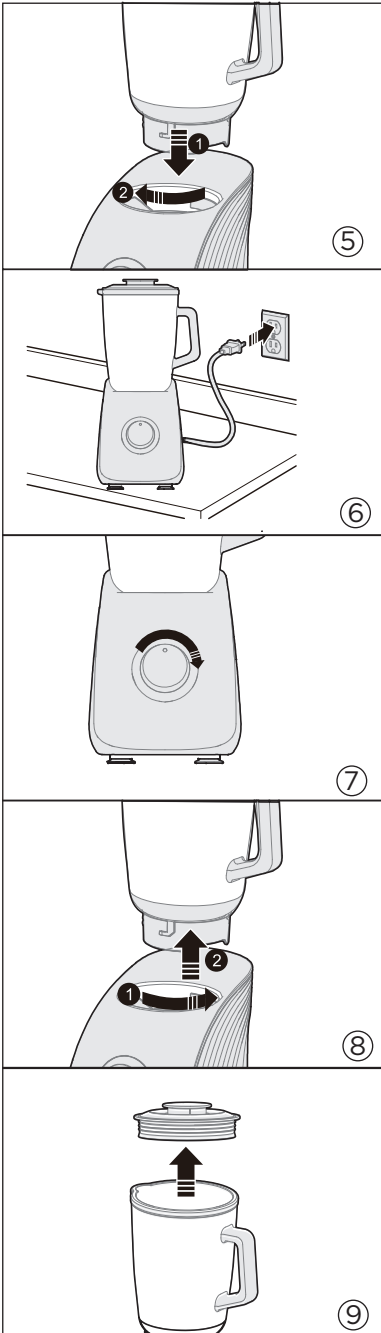
Many recipes process best with a combination of speeds with occasional use of pulse.

PULSE

Momentary burst of high power.

CHOP (speed 1)

Low speed to combine more delicate foods with a folding motion, and is good for combining wet and dry ingredients.



LIQUIFY (speed 2)

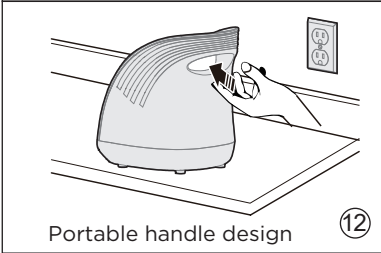
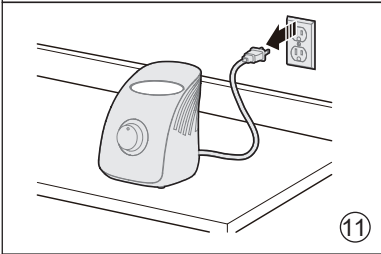
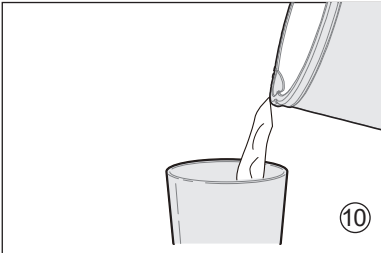
High speed is ideal for breaking down ingredients to make ice based drinks and other finely blend-ed mixtures.

⚠ CAUTION

Hot liquids can erupt during blending. Do not blend hot liquids.

Tip

- Run the blender only for the appropriate amount of ime required.
- Do not over blend ingredients.
- Use the PULSE setting when food is too thick or coarse to circulate within the blender jug.
- Do not exceed the maximum mark.
- If any moisture or liquid appears on top of the motor base during blending, turn the blender off and unplug at the wall. Remove the blender jug, and wipe motor base immediately with a dry cloth or paper towel.
- The maximum amount of ice cubes that the blender can process is 8 cubes from a standard ice tray.
- Use the PULSE function for foods that only require short bursts of power, such as chopping nuts and crushing ice.
- When blending drinks with ice cubes or frozen fruit, use PULSE in short bursts.
- Thicker mixtures puree more efficiently if the jug is too full.
- Do not use metal utensils, as they may damage the blades or blender jug.
- Do not blend a heavy mixture for more than 10 seconds. For normal blending tasks, do not blend longer than 1 minutes at a time. If you need to blend longer, turn off the blender and stir ingredients before



Tip

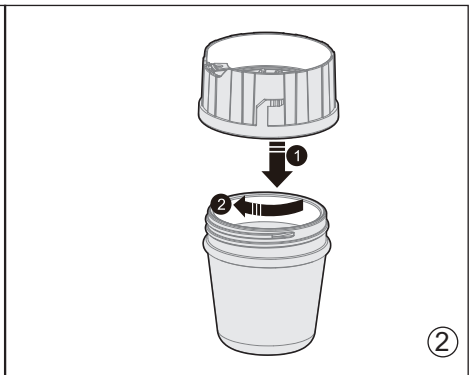
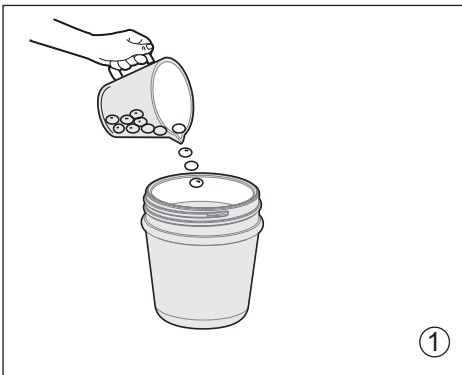
- Starting again.
- This rest will help protect the motor from wear and tear.
- The blender will not knead dough, or mash potatoes.
- When blending warm ingredients, do not put more than 2 blending bottles at a time in.
- Do not blend hot or boiling ingredients. Allow food to cool down to a warm state before placing in the blender. This is to safeguard against sudden bursts of steam that could cause the lid to dislodge.
- If blending warm ingredients, place a tea towel over the lid and hold down firmly.

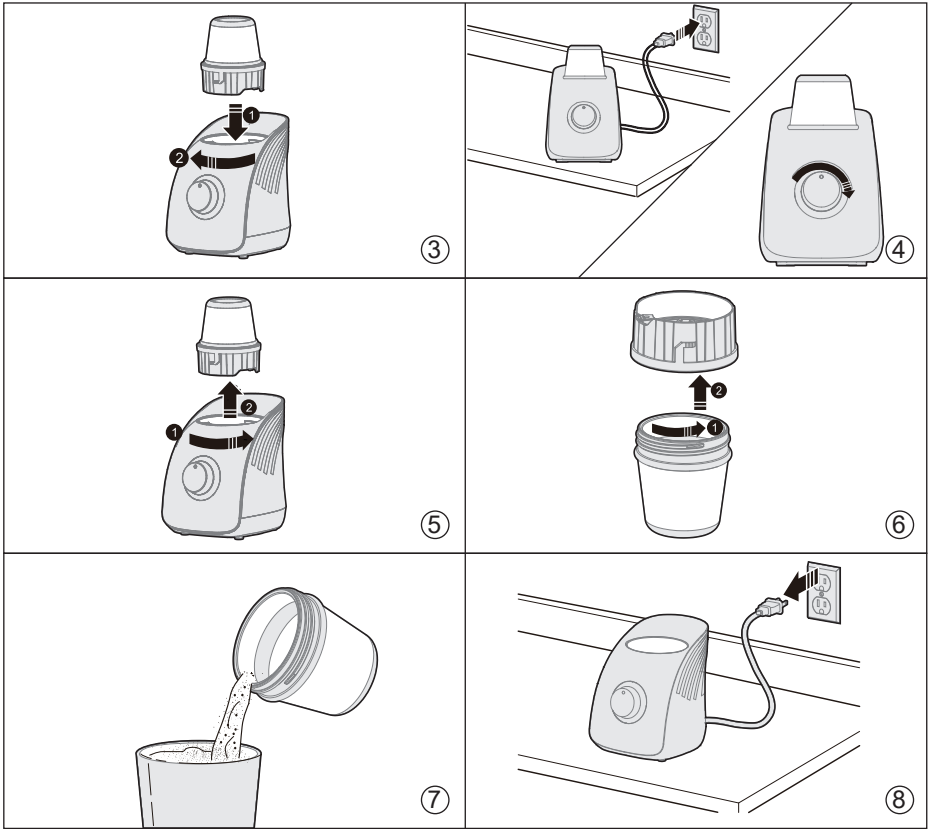
EN

NOTE

- Do not process hot foods or liquids in blender.
- Do not store food or liquids in the blender jar.
- Avoid bumping or dropping the blender.

Grinder





Tip

Overload protection system

- Machine running time can not be more than 3 minutes. After the shutdown, it is necessary to let it fully heat, cooling to room temperature.
- The MAX line is usually a good indicator to prevent overly heavy loading, however some especially dense combinations of ingredients may still strain the motor. If the motor seems to be straining or running slowly, only operate for 10 seconds at a time, or reduce the amount of ingredients used. Adding more liquid can also help to loosen dense mixtures.

Food	Preparation	Quantity	Functions (Speed)	Time
Smoothie	Milk, fruit, yoghurt, ice cream	Max 800ml	Chop (speed 1); Liquify (speed 2)	60 secs
Ice or frozen fruit	Frozen no larger than standard ice tray	Max 8pieces	Pulse; Liquify (speed 2)	60 secs
Blended soups	Cool to room temp	800ml	Chop (speed 1)	50-60 secs
Grinder	Coffee bean	50g	speed 2	30secs
Carrots juicer	Carrots,water	600g carrots 900g water	speed 2	120secs

EN

NOTE

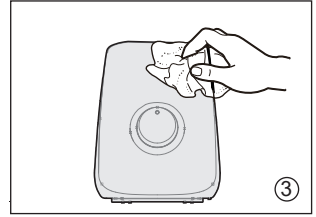
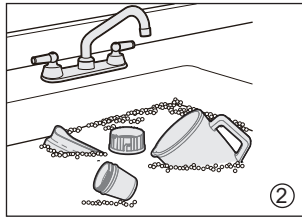
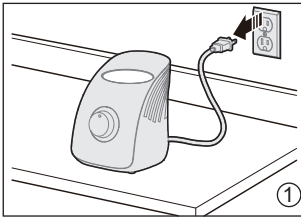
- This blending chart should be used as a guide only.

CLEANING AND MAINTENANCE

Cleaning

Cleaning appliance body, chopper lid, whisk body

EN



⚠ CAUTION

Cat hazard: Blades in jar are very sharp. Use caution when cleaning.

Unplug the power cord from the power outlet after use for safety reasons.

Jug, blades and lids

Avoid allowing food residue to dry on. Follow these steps as soon as possible after use:

- Rinse most of the residue off the jug, blades and lids.
- Hand wash in warm, soapy water using a mild liquid detergent and non-abrasive sponge.

Motor base

To clean the motor base, wipe with a soft, damp cloth then dry thoroughly. Wipe any excess food particles from the power cord.

Cleaning agents

Do not use abrasive scouring pads or cleaners on either the motor base or any part of the blender, as they may scratch the surface. Use only warm soapy water with a soft cloth.

Dishwasher

The jug, lids and blade assembly may be washed in the dishwasher on the top shelf only.

Stubborn food stains and odours

Strong smelling foods such as cumin and coriander, and some vegetables such as carrots may leave an odour or stain.

To remove, pour warm soapy water and fill to the MAX mark. Set aside to soak for 5 minutes. Then wash with a mild detergent and warm water, rinse well and dry thoroughly. Store blending bottle and jug with lids off.

Storage

Store your blender upright with the blender jug assembled on the motor base, or beside it. Do not place anything on top. To allow air to circulate, keep the lid off.

TROUBLESHOOTING

Operation of your appliance can lead to errors and malfunctions. The following tables contain possible causes and notes for resolving an error message or malfunction. It is recommended to read the tables carefully below in order to save your time and money that may cost for calling to the service center.

EN

Abnormality Analysis and Handling


Abnormality Handling

1. In case of abnormalities such as abnormal noises, smell, smoke, etc., you should immediately cut off power and stop use.
2. If the product cannot work, please check if the power supply is connected, if the switch is put to the ON position and if fittings are installed in place.
3. If the product still cannot work after checks mentioned above, please consult the designated repair centre for maintenance.

Fault Analysis and Elimination

Motor doesn't start or blade doesn't rotate	<ul style="list-style-type: none">• Check that the power plug is properly inserted into the power outlet.
Food is lumpy or unevenly chopped	<ul style="list-style-type: none">• This can happen when too much food is being blended at one time. Try a smaller amount, and work in batches if necessary.• The ingredients may be too large. Try cutting into smaller pieces. For best results, ingredients should be in pieces no larger than 2cm.
Food is chopped too fine or is watery	<ul style="list-style-type: none">• Try blending for shorter period of time. Use PULSE for better control. Food sticks
Food sticks to blade and jug	<ul style="list-style-type: none">• The mixture may be too thick. Try adding more liquid, pulsing, and/or using a slower speed for blending.
Blender stopped suddenly while in use	<ul style="list-style-type: none">• We recommend blending in smaller batches, or cutting ingredients into smaller batches.

TRADEMARKS, COPYRIGHTS AND LEGAL STATEMENT

 Midea logo, word marks, trade name, trade dress and all versions there of are valuable assets of Midea Group and/or its affiliates (“Midea”), to which Midea owns trademarks, copyrights and other intellectual property rights, and all goodwill derived from using any part of an Midea trademark. Use of Midea trademark for commercial purposes without the prior written consent of Midea may constitute trademark infringement or unfair competition in violation of relevant laws.

This manual is created by Midea and Midea reserves all copyrights thereof. No entity or individual may use, duplicate, modify, distribute in whole or in part this manual, or bundle or sell with other products without the prior written consent of Midea.

All the described functions and instructions were up to date at the time of printing this manual. However, the actual product may vary due to improved functions and designs.

DISPOSAL AND RECYCLING

Important instructions for environment

Compliance with the WEEE Directive and Disposing of the Waster Product:
This product complies with EU WEEE Directive (2012/19/EU). This product bears a classification symbol for waster electrical and electronic equipment (WEEE).

EN

This symbol indicates that this product shall not be disposed with other household wastes at the end of its service life. Used device must be returned to official collection point for recycling of electrical electronic devices. To find these collection systems please contact to your local authorities or retailer where the product was purchased. Each household performs important role in recovering and recycling of old appliance. Appropriate disposal of used appliance helps prevent potential negative consequences for the environment and human health.

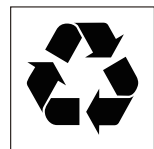


Compliance with RoHS Directive

The product you have purchased complies with EU RoHS Directive (2011/65/EU). It does not contain harmful and prohibited materials specified in the Directive.

Package information

Packaging materials of the product are manufactured from recyclable materials in accordance with our National Environment Regulations. Do not dispose of the packaging materials together with the domestic or other wastes. Take them to the packaging material collection points designated by the local authorities.



DATA PROTECTION NOTICE

For the provision of the services agreed with the customer, we agree to comply without restriction with all stipulations of applicable data protection law, in line with agreed countries within which services to the customer will be delivered, as well as, where applicable, the EU General Data Protection Regulation (GDPR).

EN

Generally, our data processing is to fulfil our obligation under contract with you and for product safety reasons, to safeguard your rights in connection with warranty and product registration questions. In some cases, but only if appropriate data protection is ensured, personal data might be transferred to recipients located outside of the European Economic Area.

Further information are provided on request. You can contact our Data Protection Officer via **MideaDPO@midea.com**. To exercise your rights such as right to object your personal data being processed for direct marketing purposes, please contact us via **MideaDPO@midea.com**. To find further information, please follow the QR Code.



make yourself at home



www.midea.com

© Midea 2022 all rights reserved