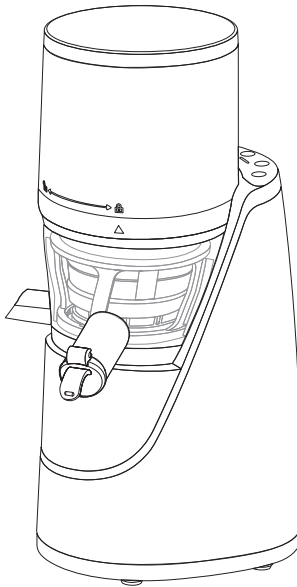




USER MANUAL

JUICER

MJ-JS20B21



Easa Husain Al-Yousif & Sons co.
C.R.337 - P.O. Box: 126 Safat - 13002 Kuwait
Please read the manual carefully before operating your product.
Retain it for future reference.

Important Safeguards

Read the instructions, keep them safe, pass them on if you pass the appliance on. Remove all packaging before use.

Follow basic safety precautions, including:

1. Don't put the motor unit in liquid, don't use it in a bathroom, near water, or outdoors.
2. Unplug before fitting or removing an attachment.
3. Keep your hands away from the blades – they're sharp.
4. Don't use the appliance unless the lid is in place.
5. Don't fill with anything hotter than you can comfortably handle (i.e. below 40°C).
6. Don't put spoons, spatulas, or any other object into the jug while the appliance is plugged in.
7. Don't leave the appliance unattended while plugged in.
8. Sit the motor unit on a dry, firm, level surface.
9. Route the cable so it doesn't overhang, and can't be tripped over or caught.
10. Don't let the jug overflow. If liquid gets under the motor unit, it may be sucked into the motor, damaging it.
11. Don't fill the jug above the max mark – if you do, the contents may force the lid open when you start the motor.
12. You may use the processor and disc for cutting/grating for up to 2 minutes. Any other use should be restricted to 1½ minutes. After this, let the motor rest for 2 minutes.
13. Don't use the appliance for any purpose other than those described in these instructions.
14. Don't use the appliance if it's damaged or malfunctions.
15. Children should be supervised to ensure that they do not play with the appliance.
16. When the machine has overload protection, do not touch the machine, to stay in continue to use when machine is back to normal.
17. This appliance shall not be used by children.
Keep the appliance and its cord out of reach of children.

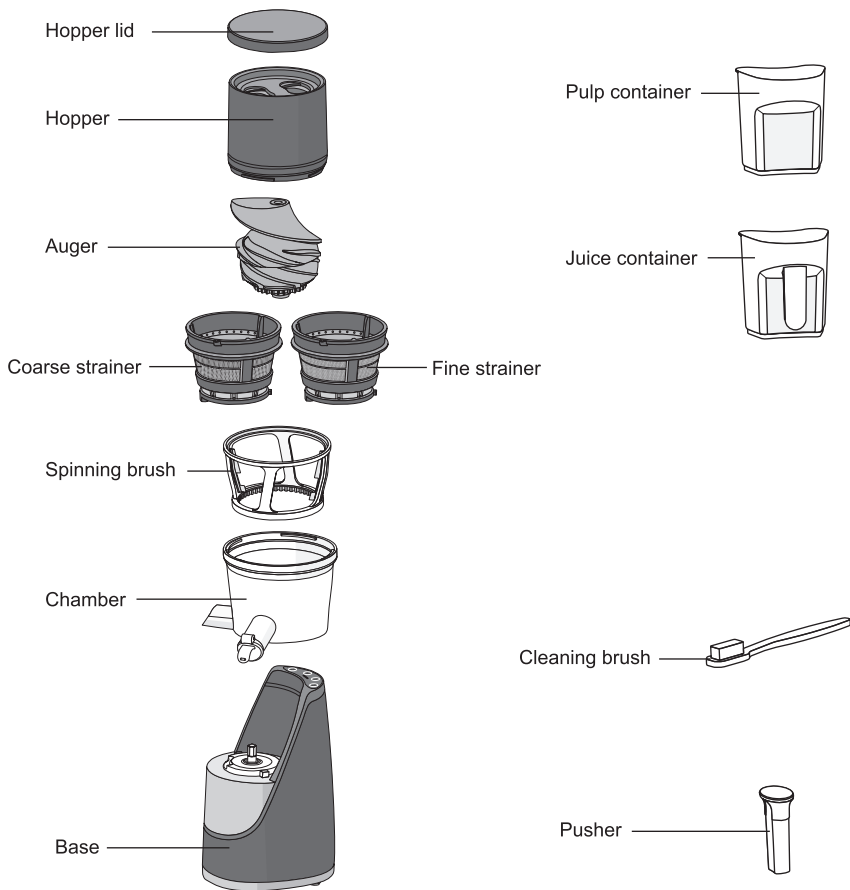


18. Appliances can be used by persons with reduced physical, sensory or mental capabilities or lack of experience and knowledge if they have been given supervision or instruction concerning use of the appliance in a safe way and if they understand the hazards involved.
19. Children shall not play with the appliance. Cleaning and user maintenance shall not be made by children without supervision.
20. Always disconnect the appliance from the supply if it is left unattended and before assembling, disassembling or cleaning.
21. Do not use the appliance if the rotating sieve is damaged.
22. If the supply cord is damaged, it must be replaced by the manufacturer, its service agent or similarly qualified persons in order to avoid a hazard.
23. Switch off the appliance and disconnect from supply before changing accessories or approaching parts that move in use.
24. Be careful when handling the sharp cutting blades, emptying the bowl and during cleaning the appliances.
Be careful if hot liquid is poured into the food processor or blender as it can be ejected out of the appliance due to a sudden steaming.
25. This appliance can be used by children aged from 8 years and above and persons with reduced physical, sensory or mental capabilities or lack of experience and knowledge if they have been given supervision or instruction concerning use of the appliance in a safe way and understand the hazards involved.
26. Household use only.

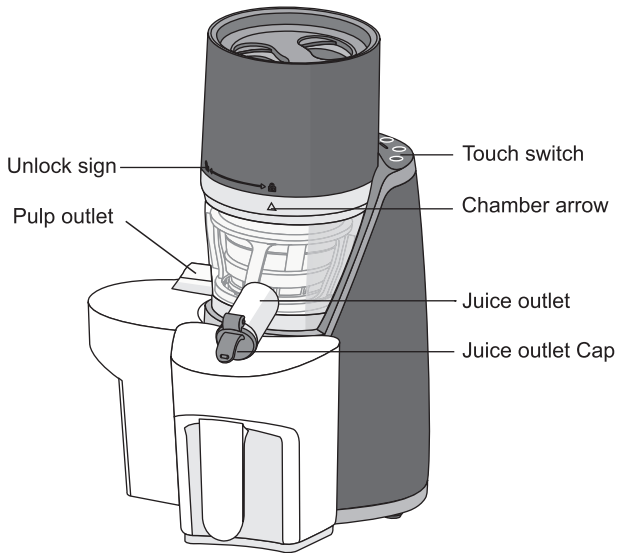
Product technical parameters

Product name	Model	Voltage	Frequency	Power	Capacity
juicer	MJ-JS20B21	220-240V~	50/60Hz	200W	1.0L

Parts name and accessories



Note: The above picture is only for reference since the appearance of the product has lightly difference, please see the real product in the package.

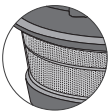


Strainer



Coarse strainer

The bigger holes of the strainer produce thicker juice with tender and soft fruits such as strawberries, kiwis and tomatoes.
Use for more pulpy juice.



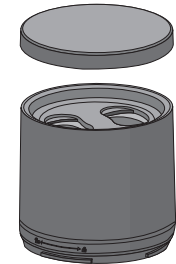
Fine strainer

The holes of the strainer are small. Use for making pure juice with hard fruits, beans or fibrous vegetables.
Use to extract clearer juice.

Select the strainer according to the ingredient

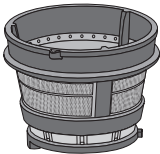
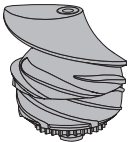
Note: The above picture is only for reference since the appearance of the product has lightly difference.

Assembly method



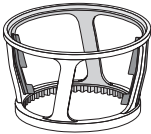
Step 4

Align the chamber arrow (▲) with hopper arrow (↻) and turn the hopper clockwise until it clicks so that the hopper arrow (🔒) aligned with chamber arrow (▲). The hopper does not close properly when the strainer and auger are not fit in completely.



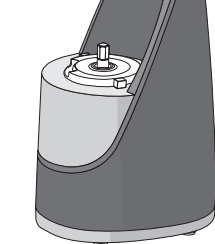
Step 3

Make sure to press the auger down into the strainer. The hopper does not close properly when the auger does not fit in completely.



Step 2

Assemble the parts in the following order: chamber>spinning brush>strainer. Make sure chamber arrow (▲) aligns with strainer arrow (▼). The spinning brush can be assembled regardless of the direction.

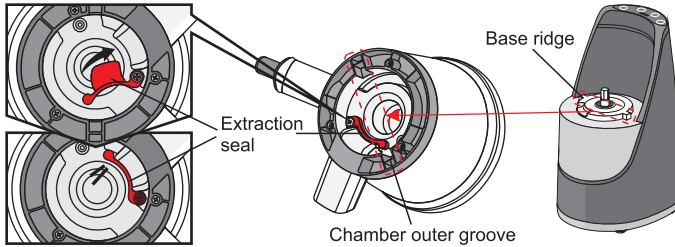


Step 1

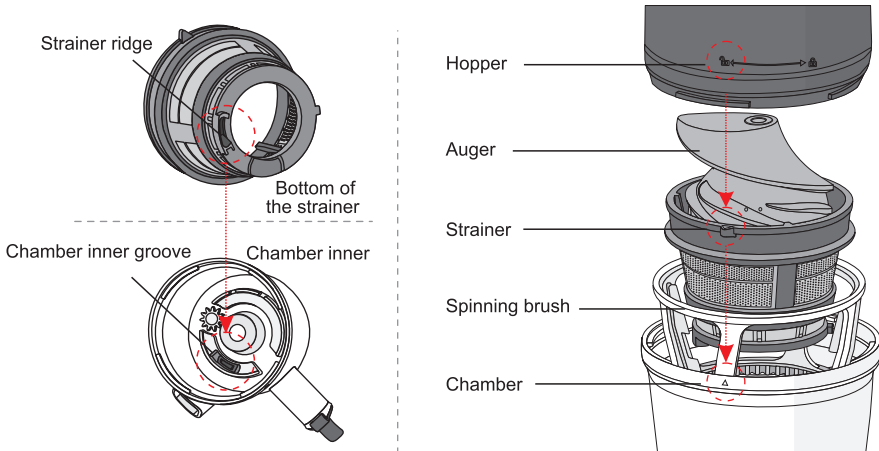
Place the chamber on the base.

Juicer assembly in detail

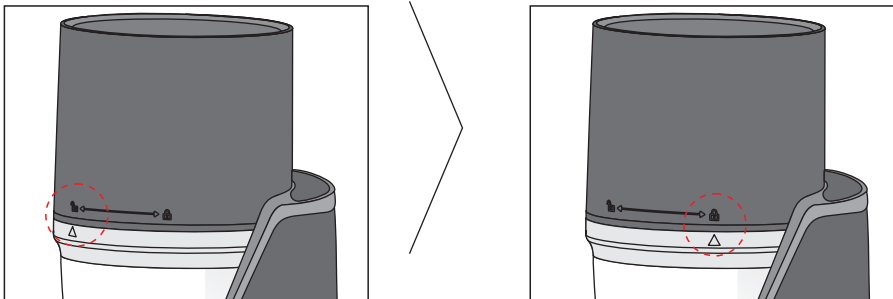
1. Firmly insert the extraction seal located at the bottom of the chamber into the pulp outlet. Make sure the outer groove of the chamber is completely aligned with the base ridge.



2. Assemble the parts in the order of chamber>spinning brush>strainer. Line up the strainer ridge with the inner groove of the chamber. Or align the strainer component (▼) with the chamber (▲).



3. Make sure align the chamber (▲) with hopper (🔒).



Description on the functions of the product

Juice function

Clean the foods, get the juice with juice container and dregs with pulp container. Cut the material in strip, feed it in the inlet, during juice making process, after the materials are feed in the inlet, push the foods in the juicer with the pusher.

If the juicer is jammed during juice making process, touch the **【Long Reverse】** or **【Reverse】** , the juicer rotates reversely for 5s, and then touch the **【Juice】** , after finishing making juice, please touch the **【Stop】** .

Mixing function

Mixing is used for making juice with several foods. Clean the foods, cut them in suitable size, before making juice, cover the juice outlet cap, then touch the **【Juice】** to make juice with the foods, (mixing foods are feed randomly), during juice making process, feed the foods in the inlet, after making juice, touch the **【Mixing】** button, the juicer will mix different kinds of juices, then open the juice outlet cap and get the fresh juice with the juice container.

Warm Tips: when mixing the juice, pay attention to the mark of the chamber, keep the juice below the max mark of the chamber to keep the juice delicious.

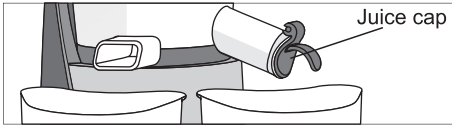
Long Reverse

If the juicer is jammed during juice making process or making ice cream, touch the **【Long Reverse】** or **【Reverse】** , the juicer rotates reversely for 5s, and then touch the **【Juice】** , after finishing making juice, please touch the **【Stop】** .

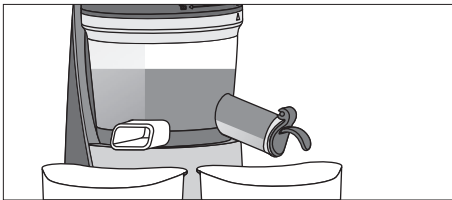
Description on the functions of the product

Juice cap

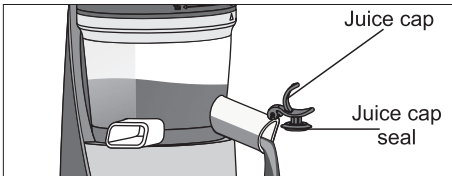
This is the juice outlet lid on the chamber. Close the juice cap to fill up the chamber with juice from various ingredients.



1. Close juice up and press **【Juice】** button to start.



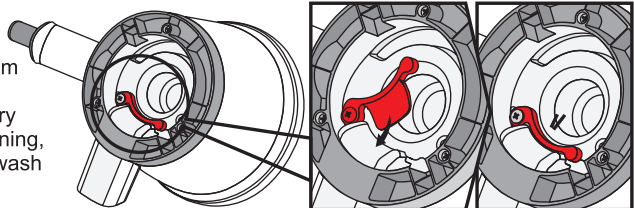
2. When juice starts filling up the chamber, you can mix banana, boiled sweet potato, etc. and liquids such as milk as well as vegetables and fruits for a unique smoothie.



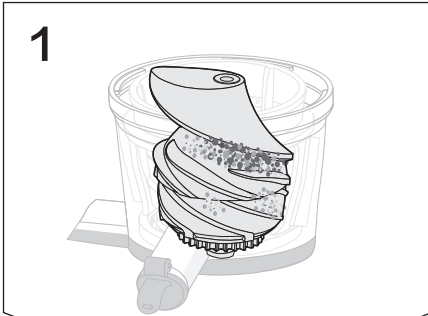
3. Open the juice cap to pour out as much juice as you need.

Extraction seal

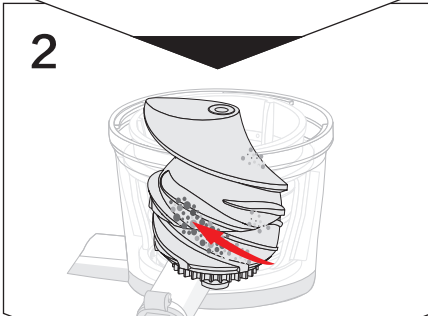
This is the pulp stopper made of silicone located at the bottom of the chamber. Always close the extraction seal before every use as shown below. For cleaning, open the extraction seal and wash out the trapped food particles



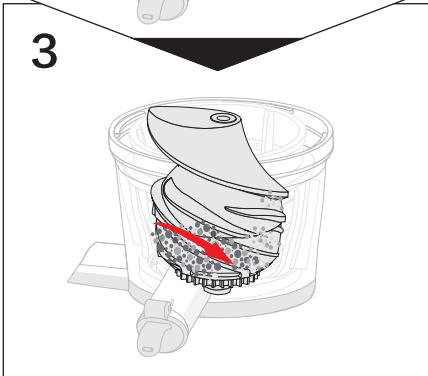
When the auger is stopped during operation (Reverser button)



1. Click the (Reverser) button on the **【Stop】** and stop the appliance.



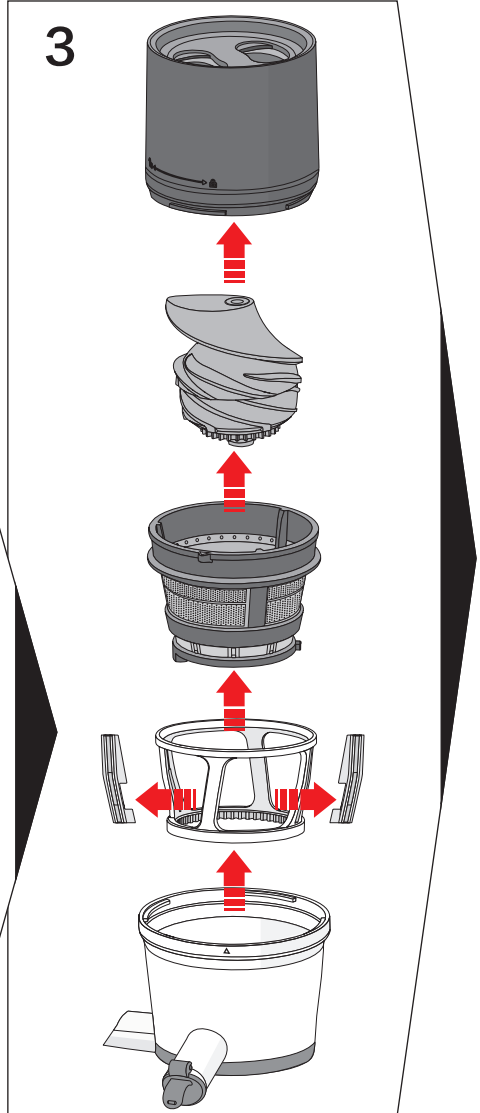
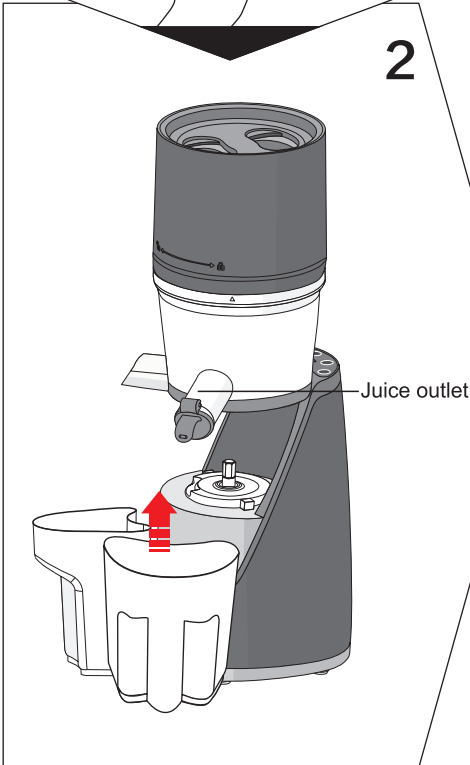
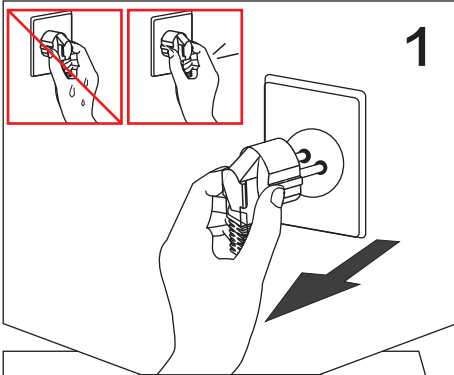
2. Hold down the **【Long Reverser】** button for 3~5 seconds and release it. Repeat this process 2~3 times. **【Long Reverser】** button pushes the ingredients back up. **【Long Reverser】** only works while the button held down. The reverse rotation of the auger stops once the **【Stop】** is pressed.



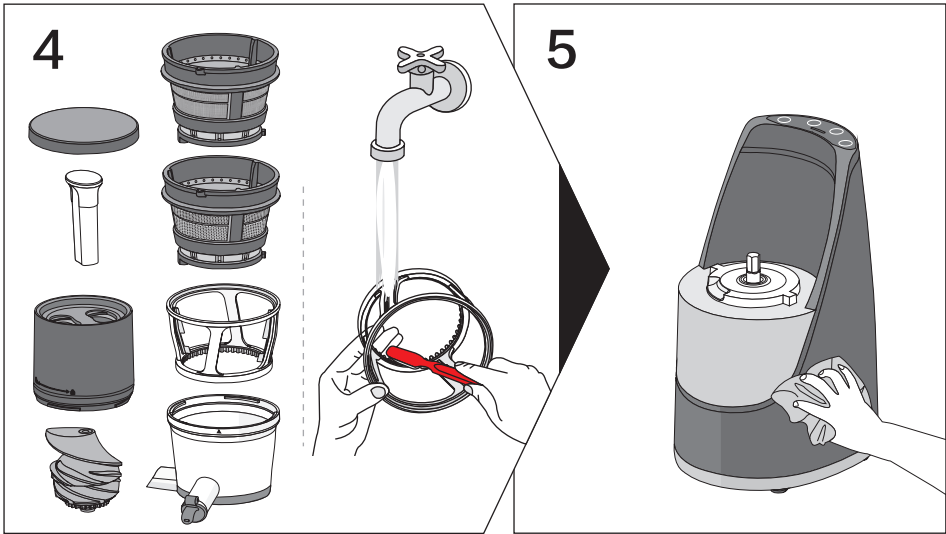
3. After the rotation stops completely, press **【Juice】** button to operate. Before press **【Juice】** or **【Long Reverser】** again, make sure that the auger has come to a complete stop.

Note If the auger does not work even after following the direction above, unplug the power cord from the electric outlet, disassemble and clean the chamber set before attempting again.

Disassembling, cleaning and care after using

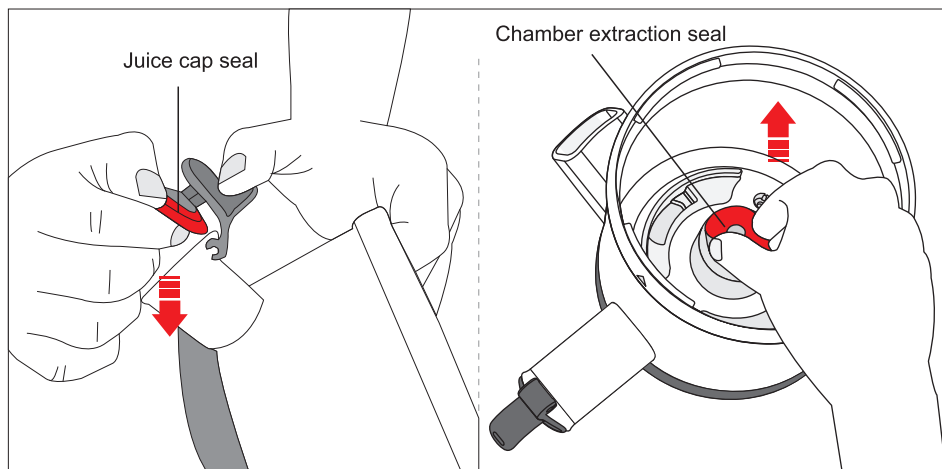


Disassembling, cleaning and care after using



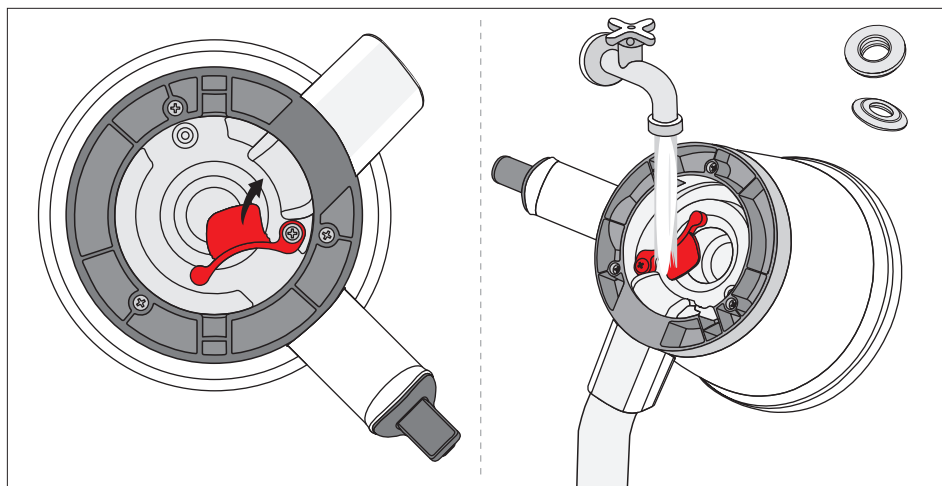
1. Ensure the motor has stopped completely and unplug the power cord. When unplug the power cord, hold the head part of the power cord and unplug it. Do not touch the power cord with wet hands.
2. Hold the juice outlet and the chamber with both hands and lift them up from the base.
3. Disassembly the parts as below:
 - ① Unlock the hopper by rotating it counterclockwise.
 - ② Remove the auger.
 - ③ Remove the strainer.
4. Rinse each part with the cleaning brush. Brush the inside and outside of each part thoroughly under running water. Never use iron brush, abrasive cleaning agents, harsh detergents or sharp cleaning tools. Do not wash the parts in the dishwasher or a dish dryer.
5. Wipe the base with a soft, damp cloth and dry thoroughly.
6. After cleaning, allow the parts to air-dry completely and store it in a clean place with hopper lid. Always wash the chamber set immediately after use. Without prompt cleaning, the pulp residue may dry and crust on the parts, making it difficult to disassemble or clean at a later time. Improper cleaning may also cause decreased performance of the appliance.

Disassembling, cleaning and care after using



1. Remove the juice cap seal and the chamber seal.

Open juice cap first. Hold the chamber and juice cap with one hand and peel off the juice cap seal with the other hand. Please be careful. Do not drop out the juice cap and the chamber. Remove the chamber extraction seal by pinching and twisting it off with fingers.



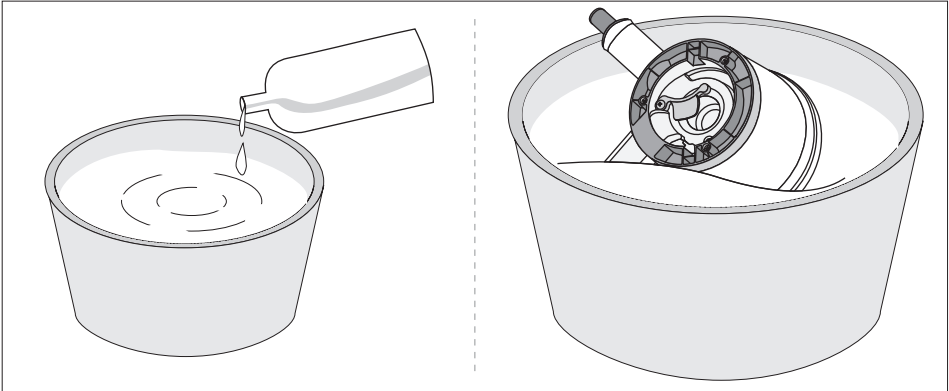
2. Open the extraction seal at the bottom of the chamber.

3. Wash the chamber and extraction seal.

Wash the chamber and the extraction seal with cleaning brush under the running water.

Sterilization and easy cleaning system

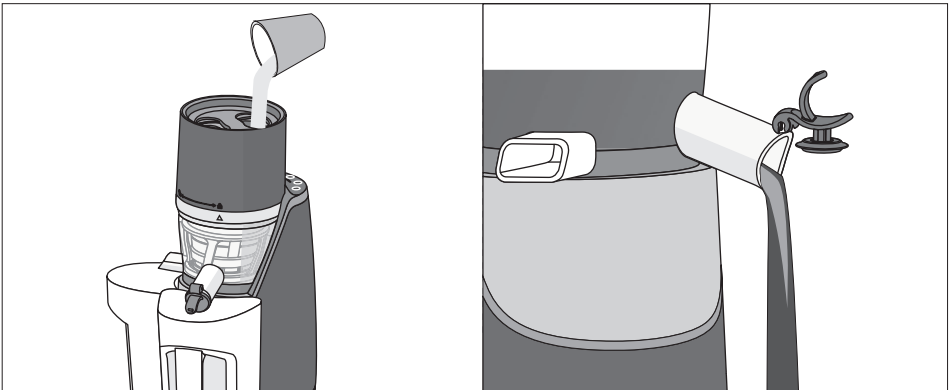
Sterilization



For sterilization, use baking soda or natural cleaning liquids only.

Sterilize all washable parts by immersing in a dilute solution of baking soda or natural cleaning liquids about 1-2 teaspoon.

Easy cleaning system

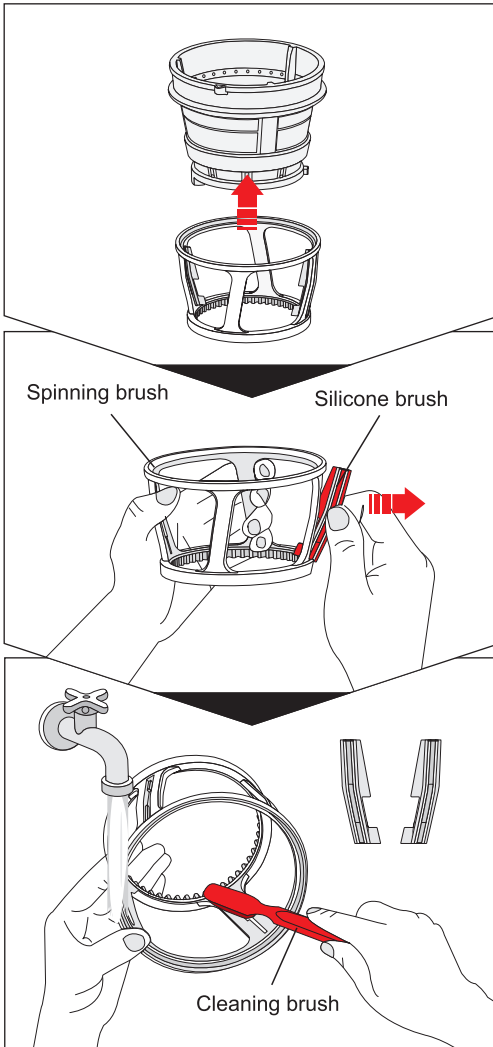


1. After closing the juice cap, pour water into the hopper chute and operating.

2. Open the juice cap and discharge the water.

It is not necessary to disassemble and wash the chamber every time between different recipes. However, always disassemble and wash the chamber set after the last juicing.

Sterilization and easy cleaning system



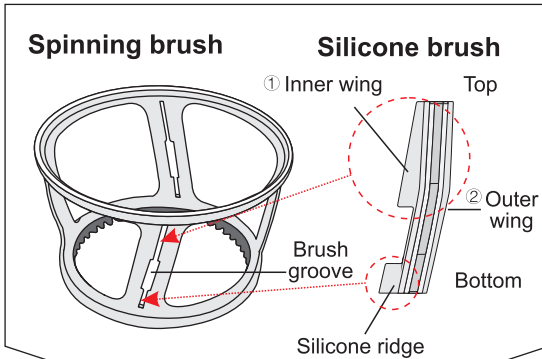
1. Remove the spinning brush from strainer.

2. Detach the silicone brush from the spinning brush.

As shown in the figure, hold the outer part of silicone brush and pull it out gently in the direction of the arrow. Silicone brush may be torn or damaged if it is pulled apart forcefully. Please follow the use manual.

3. With the cleaning brush, wash inside and outside of spinning brush under running water.

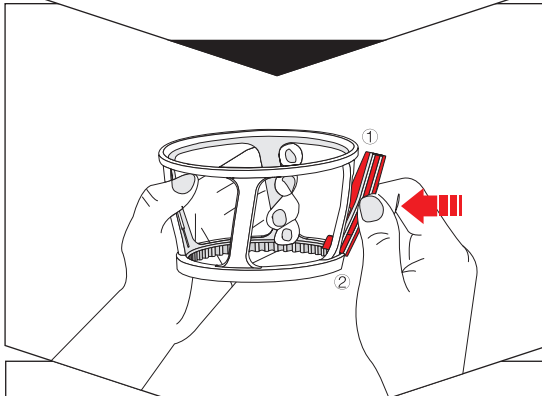
Assembling the spinning brush



1. Check the groove of the spinning brush and the direction of silicone brush.

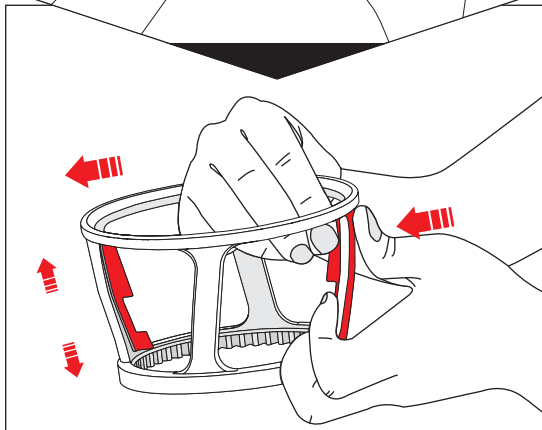
There are grooves to insert silicone brush in the spinning brush. silicone brush has inner wing and outer wing.

The longer brush of inner wing faces upward. As shown in the figure, position the silicone brush so the "Inner wing" faces the spinning brush.



2. Insert the silicone brush into the spinning brush.

See step 1 above. Hold the wing so the longer part of inner wing ① faces upward. Hold the outer wing ② of silicone brush with your thumb and index finger and insert the inner wing into the groove of spinning brush.

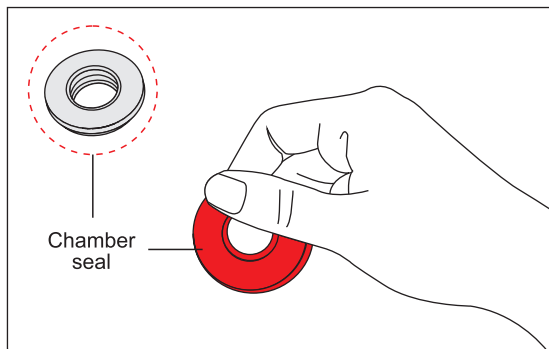


3. Pull the inner wing

Push the silicone brush in from the outside and pull the inner wing into the spinning brush with the other hand.

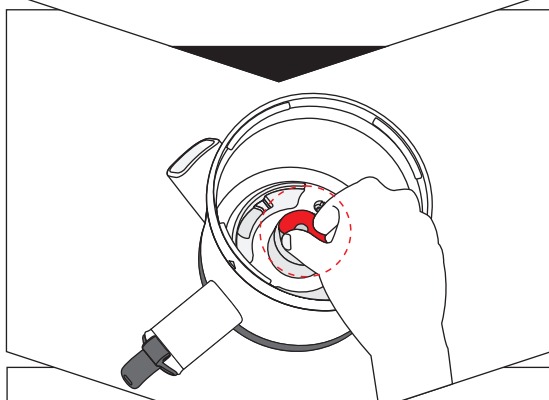
Pull the silicone brush tightly into the groove on the spinning brush. The unit may be damaged if it is operated without being properly and fully assembled. Holding the top and bottom part of the outer wing and pulling it up and down in opposite directions.

Assembling the chamber extraction seal



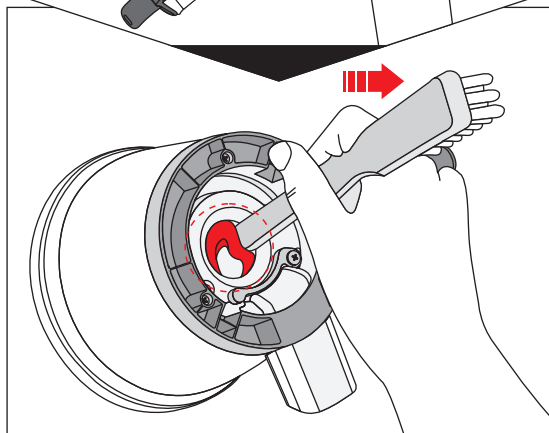
1. Hold the chamber seal by pinching it between the thumb and index finger.

Let the protruding part on the chamber seal faces upward when you hold it by pinching it between the thumb and index finger.



2. Insert the chamber seal into the chamber groove.

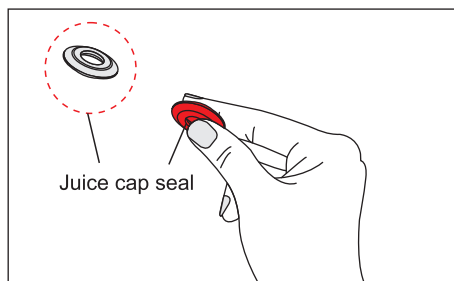
Insert the bottom of the chamber seal into the chamber groove. The chamber seal must not stay above the chamber groove.



3. Turn over the chamber and settle the chamber seal into place.

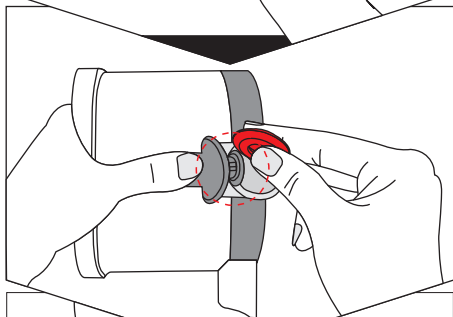
If the chamber seal at the bottom of the chamber is not fully installed, set it into place properly with the rotating pick on the end of the cleaning brush.

Assembling the juice cap seal



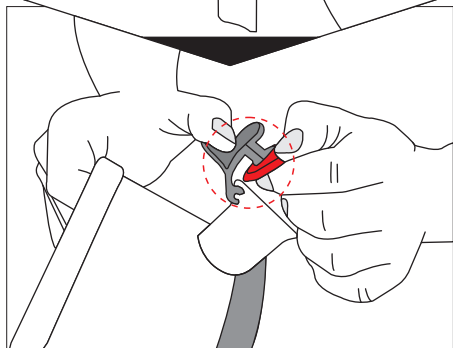
1. Hold the juice cap seal as shown in the figure.

As shown in the figure, in the dotted circle, the groove on the seal must be visible when you hold the seal.



2. Open the juice cap and fit the juice cap seal on.

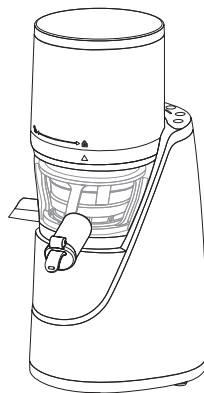
Align the chamber cap seal with the chamber cap top to bottom. Be careful not to drop the chamber.



3. Arrange the chamber cap seal for a complete fit.

If the chamber cap seal is not placed correctly, it may cause juice leakage.

Tip:
After completion of cleaning, dust cover on the hopper lid.



Cautions on use

- For fruits with hard core such as persimmon, plum, lemon and peach, please remove the core before making juice.
- Please use the coarse strainer to make grape juice since the hopper cap can't be opened if the fine strainer is used for making grape juice.
- Cut the materials with coarse fiber (such as celery) into 3~4cm before use.
- Do not store the fruit juice and vegetable juice for a long time, it is better to drink it after making juice immediately.
- The juicer can be used for mashing the garlic and capsicum (with water), but it can't be used for mashing grains, otherwise, it may possibly damage the accessories or cause fault.
- Please do not make juice with the fruit and vegetable dregs.
- Please do not keep the juicer working idly.

Please do not keep the juicer working continuously for over 20min. Motor overhead may cause juicer fault. Please stop the juicer for 5min before use it again.

It is not allowed to insert spoon or chopstick in the juice outlet when the juicer is working. It may be clamped by the rotating spinning brush and damage the accessories of the juicer.

It is not allowed to push the materials instead of the pusher. It may be clamped by the pusher and with other object damage the accessories of the juicer, injury and fault.

It is not allowed to feed grains or fruits with hard core into the juicer. It may easily cause chamber, pusher and strainer fault. For fruits with hard core such as persimmon and plum, please remove the core before making juice.

It is not allowed to press the ON/OFF button with the wet hand. Otherwise, it may easily cause electric shock, electric leakage and fire. Protect the switch from foreign objects.

It is not allowed to feed loach, eel and shrimp into the juicer. Otherwise, it may easily cause abnormal function and juicer fault.

Please do not feed fruits (grape, berry and mulberry) which are immersed in wine, honey and sugar. Otherwise, it may easily jam the hopper cap.

Note: The juice rate for foods or frozen fruits in the refrigerator is very low.