
VACUUM CLEANER

OPERATION INSTRUCTIONS MANUAL

M100-B



Jiangsu Midea Cleaning Appliances Co.,Ltd

No.39 Caohu Avenue, Xiangcheng Economic
Development Zone, Suzhou , Jiangsu Province, 215131, P.R.C
<http://www.midea.com/global>



Please read this Instruction Manual carefully before operating, and keep it properly.

Contents

Safety Introduction	2
Product Introduction	4
Product Operation	6
Product Maintenance	8
Trouble Shooting	9

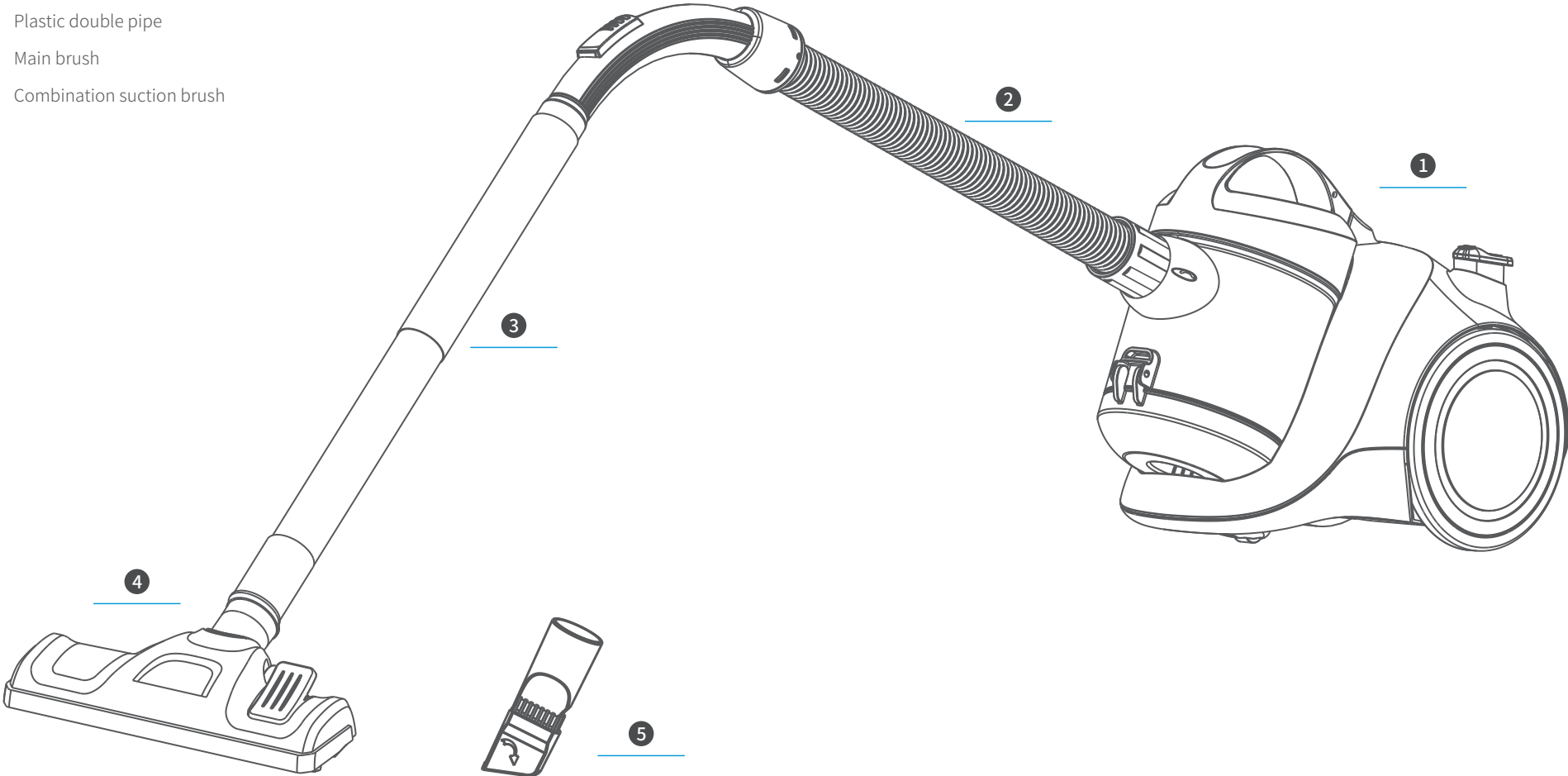
Safety Introduction

1. Please do not use the vacuum cleaner near a heat source, radiation or burning cigarette end. Do not inhale the following objects:
 - All liquids, including water and solvent.
 - Construction dust and garbage such as lime or cement ash.
 - Hot objects, such as the unextinguished cigarette end, etc.
 - Shards.
 - Flammable and explosive items.
2. Do not let children play, operate vacuum cleaners, in case of accident;
3. Your vacuum cleaner is an electric appliance: it must be used in accordance with normal conditions, and it must not be operated by the vacuum cleaner without supervision;
4. Clean, repair or temporarily not use, must cut off the power supply;
5. Cut off the power supply, do not pull the power cord directly, use the hand to hold the plug plug;
6. Check to confirm that the power supply voltage must be consistent with the vacuum operation voltage;

7. The power cord of the vacuum cleaner can not be contacted with sharp objects to avoid damage;
8. Do not use the vacuum cleaner in the water, avoid the heat source or exposure, prevent the fire;
9. Do not use vacuum cleaner in the following situations and send them to the maintenance repair point in time:
 - Severe collision has occurred and caused obvious damage or abnormal operation.
 - The power cord is damaged.
10. Avoid long running when the suction inlet is blocked, resulting in motor damage and vacuum cleaning.

Product Introduction

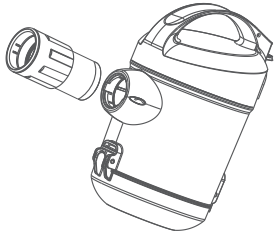
- 1 Main body
- 2 Hose
- 3 Plastic double pipe
- 4 Main brush
- 5 Combination suction brush



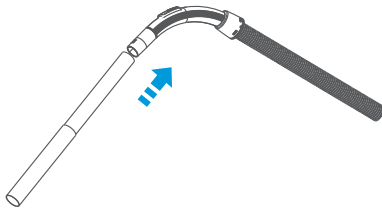
Product Operation

Illustration of the main unit

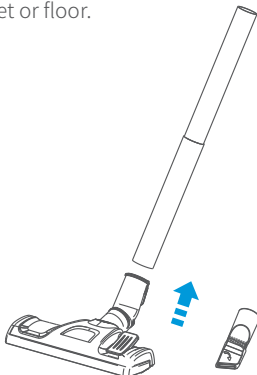
- 01** Connect the hose accessories:
insert the hose end into the hose socket at the dust cup and then hook it.
Remove the hose accessories:
rotate the hose at both side and then pull the hose accessories.



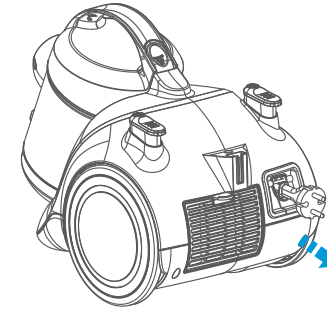
- 02** Connect the plastic tube to the curves end of the hose.



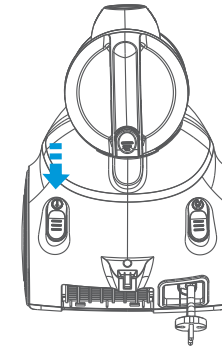
- 03** Connect different nozzle tools to the tube for different cleaning purpose: floor brush (adjust to the type of ground) for carpet or floor.



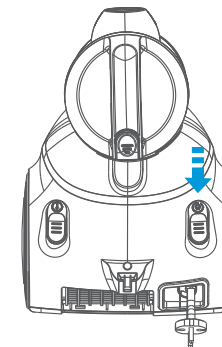
- 04** Pull out the power cord to connect the power: When you see the red marking on the power cord, don't pull it out any more.



- 05** Turn on the machine: press the on/off switch pedal, the machine could start working.



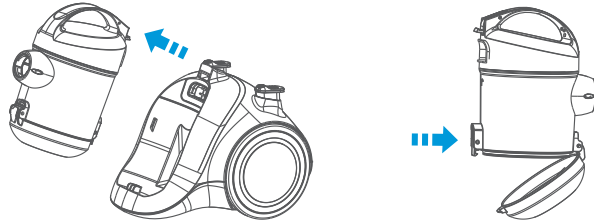
- 06** Cord rewinding: hold the plug and pull out the cord; press the cord rewinding pedal, that power cord will be drawn in.



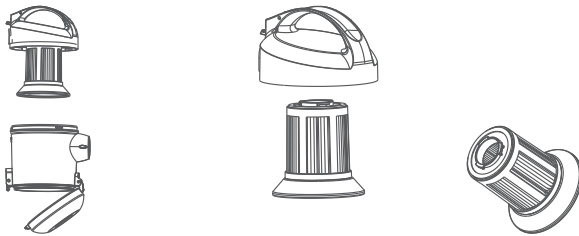
Product Maintenance

Dust cup cleaning

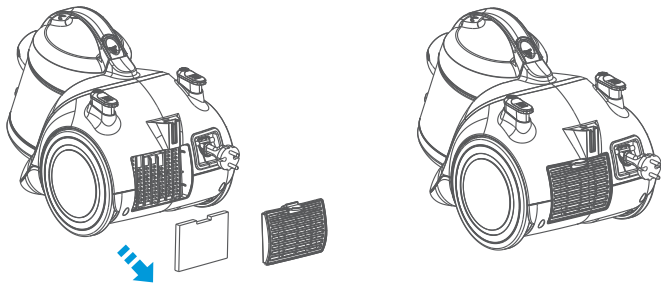
- 01** Remove the dust cup: press the dust cup to release the key, gently pull the dust cup handle, remove the dust cup;
Dumping garbage: please press the dust button to dump the garbage.



- 02** Open the dust cup: cover and extract the dust bowl;
Clean the filter element: remove the filter, rinse with water, and pay attention to the direction of rotation.



- 03** Wash or exchange the outlet filter (HEPA): clip down and remove the outlet cover by hands for wash or exchange of filter.



TROUBLESHOOTING

In case of malfunction, please refer to the following table

Problem	Possible reason	Solution
Suction abate	- Cup full of dust	- Clean up the dust cup
The machine suddenly stopped working	- The power cord plugs off	- Reconnect the power
The machine suddenly stops	- No power/power plug is not inserted	- Reconnect the power

If the problem still can't be solved, please contact local service center.

