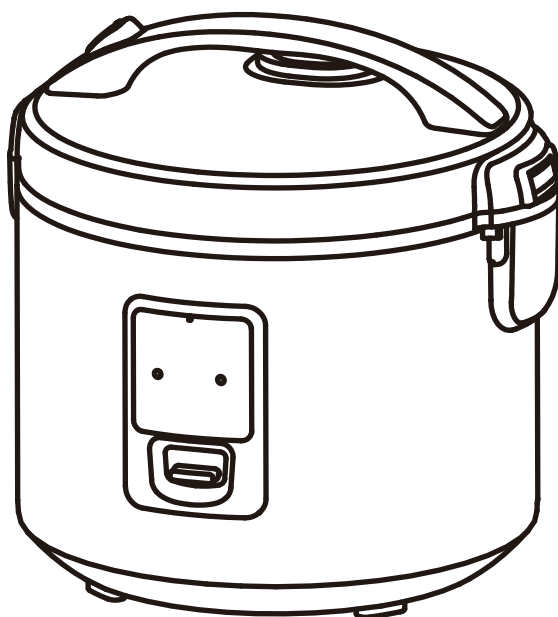




## Rice Cooker Manual

MODEL: MB-YJ5010



Thank you for purchasing the Midea electric rice cooker. Please read this User's Manual carefully before using and keep it in a good place for future reference.

## NOTICE

1. This appliance is not intended for use by persons (including children) with reduced physical, sensory or mental capabilities, or lack of experience and knowledge, unless they have been given supervision or instruction concerning use of the appliance by a person responsible for their safety.
2. Children should be supervised to ensure that they do not play with the appliance.
3. This appliance is intended to be used in household and similar applications such as:
  - staff kitchen areas in shops, offices and other working environments;
  - farm houses;
  - by clients in hotels, motels and other residential type environments;
  - bed and breakfast type environments.
4. If the supply cord is damaged, it must be replaced by the manufacturer, or the service agent or similarly qualified person in order to avoid a hazard.
5. Please turn off and unplug the appliance before cleaning, maintenance or relocation and whenever it is not in use.
6. The heating element surface is subject to residual heat after use, do not touch.
7. Warning: Avoid spillage on the connector.
8. Warning: Misuse may cause potential injury.

## Safety Instructions

To prevent any damage to persons and property, be sure to follow the following safety precautions:

Accident may be caused by error if not complying with the safety warning.

The product does not consider the following:

- Use by unattended children and disabled
- The situation that a child plays with toys or appliances.

Meanings of icons in the text

- ❗ Standing for "Forcibly" content
- ⚠ Standing for "Prohibited" content
- ⚠ Warning: can cause casualties
- ⚠ Caution: can cause light injuries to persons and property losses.

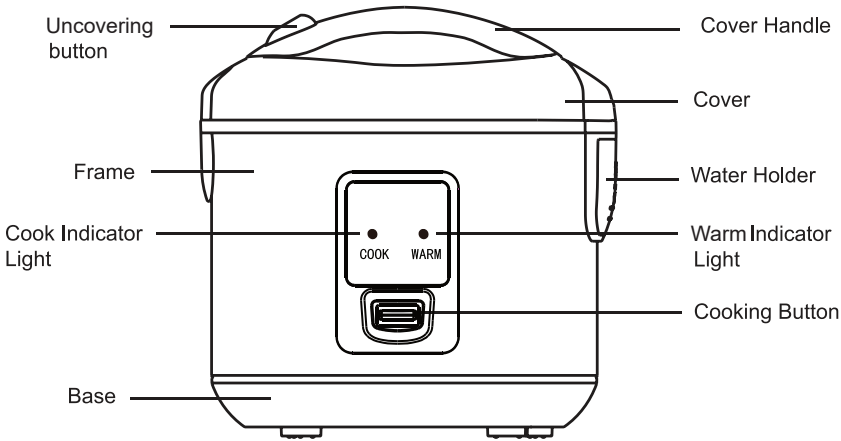
### ⚠ Warning

- ❗ The damaged power cord shall be replaced with a special flexible cord or a special component bought from the manufacturer or service agency.
- ⚠ Do not let a child operate the product unattended. Put it out of the reach of babies to avoid electric shock, scald and other dangerous accidents.
- ⚠ When the power cord plug is damaged or a socket becomes wet, (Never use the appliance) to avoid fire, electric shock or short circuit.
- ❗ Any dust in the plug must be cleaned immediately to avoid fire.
- ❗ Please repair the product or replace the parts by the professional repair office to avoid hidden danger caused by incorrect repair or incorrect parts. Note: If some parts and accessories such as fuse are not correctly repaired or connected without approval will possibly cause protection failure and result in overheating or fire.
- ⚠ Never use the following modes for operation to avoid fire and electric shock due to damaged power cords: Power cord processing, forced bending, approach to high temperature, binding, bearing heavy objects, etc.
- ⚠ Fire or electric shock may be caused if 220V AC is not used. Never use a damaged power cord.
- ⚠ Never pull off the plug with a wet hand to avoid electric shock and injury.

### ⚠ Note

- ❗ Before the rice cooker works, please remove water drops and rice grains between the inner pot and heating plate to avoid overheating or short circuit.
- ⚠ During operation, never have your face or hands close to the steam port in order to avoid scald.
- ❗ The rice cooker must match the supplied inner pot to avoid overheating or abnormal circumstance.
- ⚠ Any person other than a repair technician is not allowed to dismantle or repair the appliance to avoid fire, electric shock or injury.
- ❗ The height above sea level for normal operation of the product is within 0 ~ 2000m.
- ❗ Please use an individual earthed socket of 10A rated current, and joint use of the same socket with other appliances may cause fire.
- ❗ The plug must be inserted into the socket thoroughly to avoid fire, electric shock or short circuit.
- ❗ During operation, do not move or shake the rice cooker. Do not immerse the appliance in water or any other liquid.
- ⚠ In operation, never cover the steam port with a cloth, as this may cause accidents or damage to the rice cooker.
- ⚠ Never use this appliance to cook any food that may jam the steam vent: Foliaceous food (e.g. laver, Chinese cabbage) or strip food (e.g. kelp) and fragmentary foods (e.g. corn grit), as this may cause accidents or damage to the rice cooker.

PRODUCT SPECIFICATION



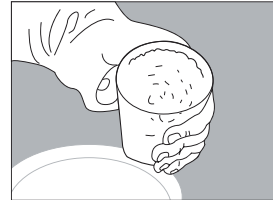
PRODUCT SPECIFICATION

Model	Voltage	Power	Capacity	Dimensions(mm) (LxWxH)
MB-YJ5010	230V~ 50Hz	650W	1.8L	275×279×279

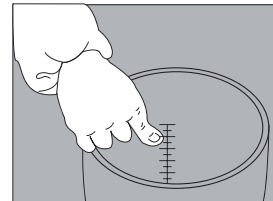
## OPERATION INSTRUCTIONS

### 1. Rice metering and washing

- The measuring cup is mainly used to measure the amount of rice. A flat cup of rice is 0.18L. The product can cook up to 10 cups of rice, the corresponding rice quantity is 1.8L, and the maximum volume of the inner pot capacity is 5L.
- Do not wash rice directly with the inner pot to avoid scratching its non-sticky coating or distort it due to collision resulting lower heat efficiency due to poor contact with the electric heating plate.

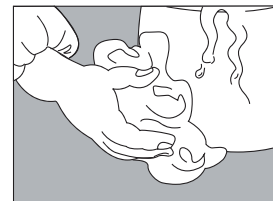


### 2. Put washed rice into the inner pot and add water to the corresponding level ( e.g., add water to high level "3" if 3 cups of rice are to be cooked), add or reduce the amount of water depending your personal taste.



- To steam food off water, add a proper amount of water to avoid water overflows the steamer when boiling.

### 3. Mop up the interior and exterior of the inner pot with dry cloth, place it into the cooker body. Turn the inner pot gently for several times to allow its bottom come into contact with the electric heating plate.



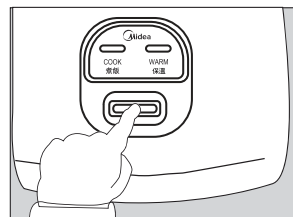
- No foreign matter can be allowed between inner pot and electric heating plate.
- The non-sticky coating of inner pot is in conformity with standards of food sanitation and unharmed for human health.

### 4. Press down the cover until it snaps in place.

- Make sure the cover is properly closed, otherwise the cooking effect may be affected.

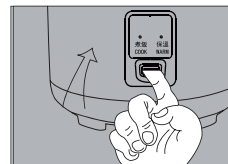
### 5. Cooking

The "warm" lamp is illuminated after plugging in warming. The Rice Cooker enters the cooking process until you have pressed the "Cooking" button. Otherwise, the Rice Cooker will be still in warming process.



## OPERATION INSTRUCTIONS

6. When cooking is finished, the cooking switch will pop up and a "click" will be heard. At the same time, the cooking light will go out and keep warm light will go on.



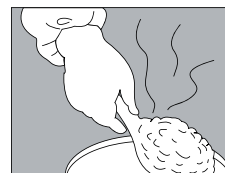
### Special Hint:

The taste should be the best after 15 minutes stewing.

7. Food steaming. Put the suitable amount of water into inner pot. The amount of water varies according to the food and its quantity (DO NOT exceed the height of the steam tray)

- Install the steam tray into the pot and place food on the tray.
- Operate the cooker according to the 4,5,6 above.
- When food steaming is finished, you must turn off the switch button manually (push up). The cooker will automatically keep the food warm until serving.

8. When serving rice, the attached spoon, not metal spoon, should be used to avoid scuffing the non-sticky coating of inner pot and causing exfoliation of coating, at the same time, dry grain of cooked rice should be removed.

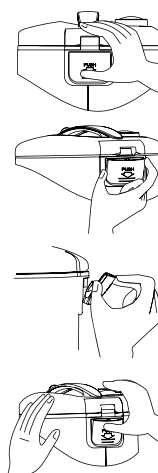


9. In order to keep cleanness and sanitation, please clean up the rice water in water holder after cooking.

## WATER HOLDER

1. As the position shown by the right figure, you should place your hand at the position of two lines and put toward till hearing the sound of "click", the water holder can be opened. Note: no need to put with a rush force when you put toward, otherwise the water may spill out of the water holder.
2. The water holder can be taken out inclined upward when it is opened to position shown as the right figure. Note you should slowly take the water holder out to prevent water spill out.
3. After washing it, the water holder should be replaced inclined downward into the seat of water case.
4. After placing the water holder in the seat of water holder correctly, you should put it toward with thumb till hearing the sound of "click".

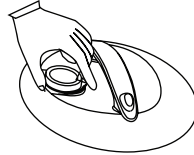
Precautions: The placement of water holder could be felt with tightness at the beginning, but it will be easy after 3 - 5 times.



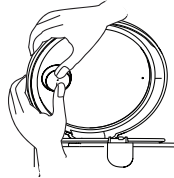
## STEAM VALVE

### Disassembling Method

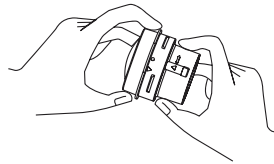
1. Shown as figure, it can be disassembled after rotating it rightward and leftward when pulling it up.



2. If the above method is difficult to disassemble, the method of lightly pushing the steam valve out with hands can be adopted and the concrete steps should refer to figure.

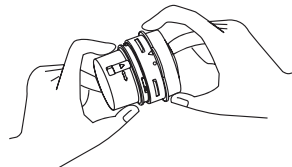


3. The part disassembled can be divided by rotating it along with direction of "open" shown as the arrowhead and pull it forward.

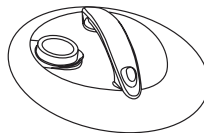


### Method of Installation

1. Make the triangle mark ( $\Delta$ ) on seat of steam valve pointed to the position of triangle mark ( $\Delta$ ) on cover of steam valve.



2. Rotate it along the direction of arrowhead "close" till hearing the sound of "click".
3. Insert it correctly in the hole of steam valve and guarantee the position of seal ring in steam valve exactly before placing steam valve. (the edge should be placed into groove, that is the edge of steam valve pointed to the handle )



### Cleanness Method

1. The component of steam valve should be washed timely and the cover and seat of steam valve should be washed separately.
2. Wipe dry and clean the cover, seat and inside of steam valve with cloth.

#### PRECAUTIONS:

1. If there is foreign matter in component of steam valve, it should be removed timely in order to keep the effect of preventing spill over and cooking rice.
2. When washing the component of steam valve, please do not pull and push the seal ring of steam valve.

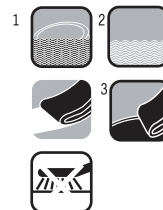
#### PRECAUTIONS

1. The inside pot cannot be heated on any other furnace, otherwise it can be deformed easily.
2. The cooked rice start to keep warm, it is not suitable for eating immediately and it will be more soft and delicious if leave it stewing for 15 minutes.
3. The time of keeping warm should not be exceed 12 hours in order to avoid the cooked rice off flavor.
4. The product without function of cooking porridge cannot be used for porridge and soup in order to avoid a large quantity of soup or water spill out and damage the component.



#### CLEANING METHOD

1. Take the inner pot out of the electric rice cooker, wash it with domestic liquefied detergent and rinse with fresh water and then wipe it dry with soft cloth.
2. Do not use metal brush or other hard tool to wash inner pot in order to avoid damaging the non-sticking coating on its surface.
3. Take the water holder down and spill over water or soup and then install it after washing clean.
4. The grain of cooked rice or other sundries may attach to electric hot tray, the fine sand paper can be used for grind them away and wipe it with soft cloth to keep the fully contact between inner pot and electric heating plate.





## TROUBLESHOOTING

No.	Malfunction		Causes	Solutions
1	The light is off	Heating plate is not hot	Circuit of electric rice cooker is not connected with power supply	Inspect whether the switch, plug and socket connector, fuse and leading wire of power supply are in good condition and insert the plug reliably.
		Heating plate is hot	1. Wiring connection of indicator light is loosened 2. Indicator light is damaged	It should be sent to customer service center for repair.
2	The light is on	Heating plate is not hot	1. Wiring in the middle is loosened 2. Electric-thermal tube is burnt out	
3	Cooked rice is crudity or time of cooking is too long		1. Cooking time is insufficient 2. Heating plate is deformed 3. Inner pot is declined and one side is hanging in the air 4. There is foreign matter between inner pot and heating plate 5. Inner pot is deformed	1. Cook rice according to required conditions 2. The fine sand paper can be used for correcting slight deformation but the severe deformed one should be sent to customer service center for replacement. 3. Turn the inside pot lightly to make it return to normal 4. Clean it up with fine sand paper 5. Send to customer service center for new inside pot
4	Cook rice burnt or cannot keep warm automatically		1. The buttons of cooking rice and the alnico lever is not doing the best work 2. The steel magnet temperature limiter is out of work 3. The thermostat is burnt out or the wires loosen	It should be sent to customer service center for repair.
5	Overflow		1. Installation of steam valve is poor 2. Steam reflux valve is deformed or has foreign matter	1. Reinstall it according to installation method in this instruction manual 2. Wash it or remove foreign matter as required

Dealer Stamp	<b>Warranty Details</b> Changes to Warranty card invalidates the warranty	
	Model No. _____	Product: _____
	Serial No. _____	Date of expiry of warranty: _____
	<b>Customer Details</b> To be filled in upon purchase	
	Customers Name&Address _____	Date of purchase _____
	Tel.No./Email _____	
	<b>Service History</b> To be filled in case of warranty repair	
	Job no. _____ Date _____	Job no. _____ Date _____
	Job no. _____ Date _____	Job no. _____ Date _____

Midea offers the owner of this product a ONE YEAR WARRANTY, from the date of purchase, against all manufacturing defects in material and workmanship. The warranty card to be presented to authorized service centers / distributors along with the purchase invoice to claim the warranty.

The warranty does not cover;

- 1) Damage due to mishandling or fire and becomes invalid if repair has been attempted by unauthorized persons.
- 2) Any failure to follow the instructions as mentioned in the user manual.
- 3) Fluctuation in voltage or any modifications/adjustments made to comply with local electrical, safety and technical standards.
- 4) Damages caused by fire, accident or any natural disaster, damage due to mishandling, wear & tear, voltage fluctuations.