

TABLE OF CONTENTS



MONDRIAN UPHOLSTERY COLORS 4
MONDRIAN MODULAR SOFA SYSTEM 5
REGENCY TUFTED MODULAR SOFA SYSTEM 10
CHARGING STATIONS 12
BANQUETTES 15
VICTORIAN MODULAR SOFA SYSTEM & CHAIRS 18
BAROQUE 19
SAVOY MODULAR SOFA SYSTEM 21
DINING CHAIRS & BAR STOOLS 23
BARS, FOOD STATIONS, DJ BOOTH & FOH SCREENS 28
BAR BACKS & CREDENZAS 31
TOWERS & ROOM DIVIDERS 33
COFFEE & END, CRUISER & COCKTAIL TABLES 35
COMMUNAL TABLES 36
DINING TABLES 37
LIVE EDGE DINING TABLE 38
TRANSPARENT DINING TABLES 39
LIGHTING 42
ILLUMINATO & BOXWOOD 47
ACCESSORIES 48
WIDE FORMAT PRINTER GRAPHIC MEDIA 49
ROAD CASES 50

BRANDABLE NO TOOLS **NO SCREWS**

PRODUCTS THAT **COORDINATE**

RECUPERATE YOUR INVESTMENT
IN AS LITTLE AS 2 RENTALS

MODULAR INNOVATIVE **CUSTOMIZED**

TRANSFORMABLE INVENTORY **HAND CARVED SOLID
HARDWOOD**

LIGHTNING FAST SET UP
AND TEARDOWN

MOVABLE

**POLISHED STAINLESS
STEEL PFRAMES**

SCALABLE AND EASY TO MOVE

DESIGNED FOR DURABILITY **BUILT FOR RENTAL**

MAXIMIZE REVENUE

CASES FOR TRANSPORT AND STORAGE



MONDRIAN MODULAR SOFA SYSTEM



MONDRIAN UPHOLSTERY COLORS

watch our video on www.moderneventfurniture.com to see how easy it is to recover this collection!



WHITE



BLACK



GOLD

MATCHING
GOLD FEET



SILVER



RED



CYAN



FUCHSIA



PURPLE



YELLOW



GREEN



COLUMBIA



NAVY

MONDRIAN MODULAR SOFA SYSTEM

The Mondrian collection has been our staple since 2004. This modular system was designed for rental; each item is lightweight yet durable, sized for a standard doorway, and easily recovered by your staff with our pre-sewn skins, requiring no previous upholstery experience. Our custom stainless feet are virtually indestructible, this collection will be your modern workhorse. The pieces are designed on the same specifications to fit together in countless ways limited only by your imagination.



MONDRIAN CORNER



MONDRIAN END SITTING LEFT



MONDRIAN END SITTING RIGHT



MONDRIAN MIDDLE



MONDRIAN INSIDE ROUND



MONDRIAN OUTSIDE ROUND



MONDRIAN ARC



MONDRIAN BOW



MONDRIAN WEDGE



LEXINGTON HIGH BENCH



CONTINENTAL LOW BENCH



OPUS OTTOMAN



CUBE OTTOMAN



MOTT CURVED OTTOMAN



COSMOPOLITAN OTTOMAN



DOT OTTOMAN

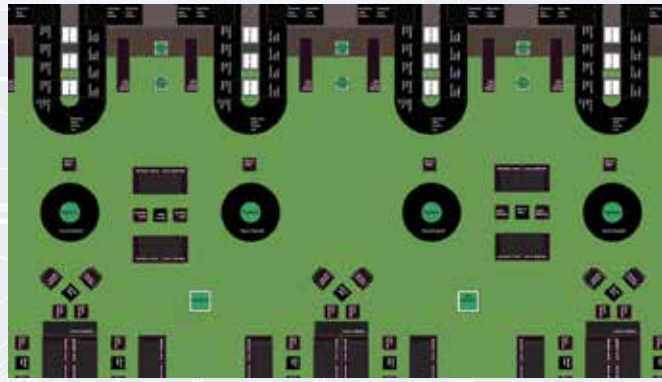
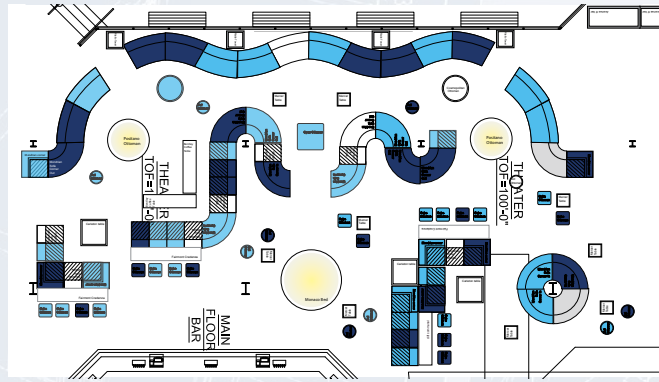


TETE A TETE

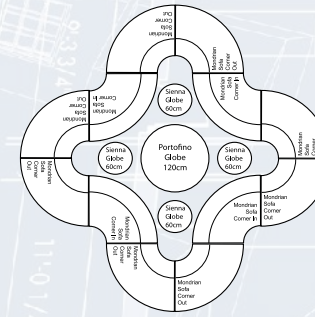
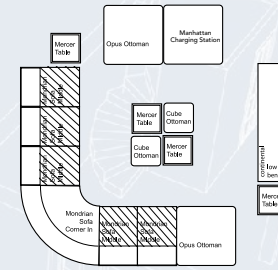


PLAZA THROW PILLOWS

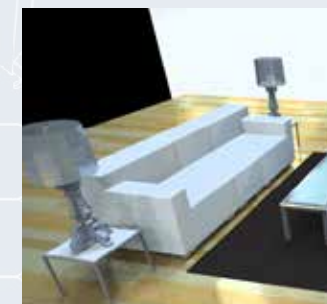
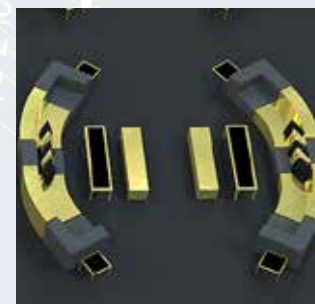
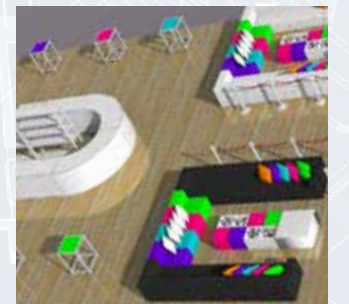
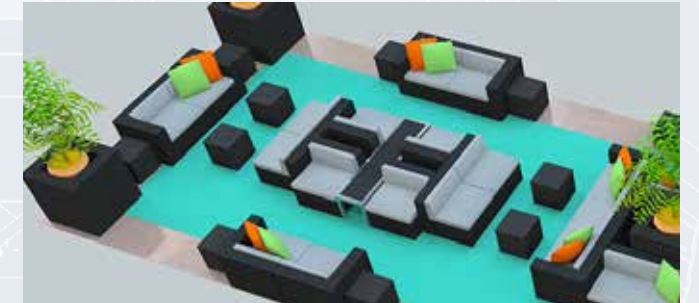
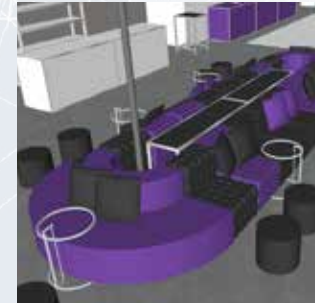
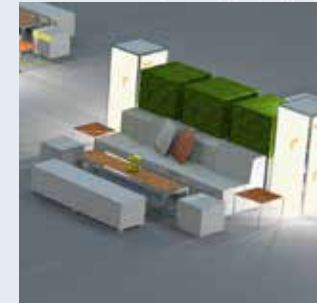
BEFORE AND AFTER 2D/3D AND FINAL EVENT PHOTO



2D MODULAR SOFA SYSTEM FLOOR PLANS



3D MODULAR SOFA SYSTEM FLOOR PLANS





REGENCY TUFTED MODULAR SOFA SYSTEM



REGENCY TUFTED MODULAR SOFA SYSTEM

Deep tufting & buttons give this collection a rich & luxurious feel. Created on the same design platform as Mondrian, it can mix & match with it, in addition to our MEF coffee and side tables and our Savoy outdoor system.



REGENCY CORNER



REGENCY MIDDLE



MAXWELL OTTOMAN



BERNHARDT OTTOMAN



LANCASTER BENCH



VANCE OTTOMAN

REGENCY TUFTED MODULAR SOFA SYSTEM



UPHOLSTERY COLOR OPTIONS

NEW WEATHERED COGNAC



VANDERBILT ROUND



REGENCY PODIUM



MARLOWE MIRROR



VANDERBILT ROUND TUXEDO

Available in black and white patent or a combination of both featuring contrast piping and buttons



DORSET OTTOMAN

CHARGING STATIONS



CHARGING STATIONS

Easily integrated into any Mondrian or Regency lounge, our charging stations are cordless with a battery life of 10 hours. The custom fit injection molded dock can accommodate 6 smart phones or tablets for a total charge of up to 220 hours. Each position features a 3-way wire servicing iphone 4, iphone 5/6 or android devices. Ideal for conferences or corporate events. For longer rentals, a wired option is also available on order.



UPHOLSTERY COLOR OPTIONS

SAME SIZE AS
OPUS OTTOMAN
OR CARLETON
COFFEE TABLE



MANHATTAN CHARGING STATION

SAME SIZE AS
CUBE OTTOMAN
OR MERCER
SIDE TABLE



PARKER CHARGING STATION



BANQUETTES



BANQUETTES



METAL OPTIONS



UPHOLSTERY COLOR OPTIONS

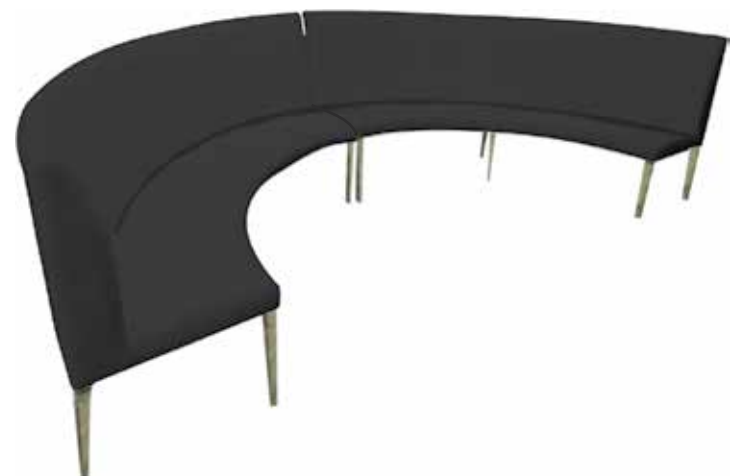
Easily disassembles for transport & storage
 Seat removable from base with magnets
 No tools required



MAYFAIR
 Also available in black, white patent & cognac



WALDORF



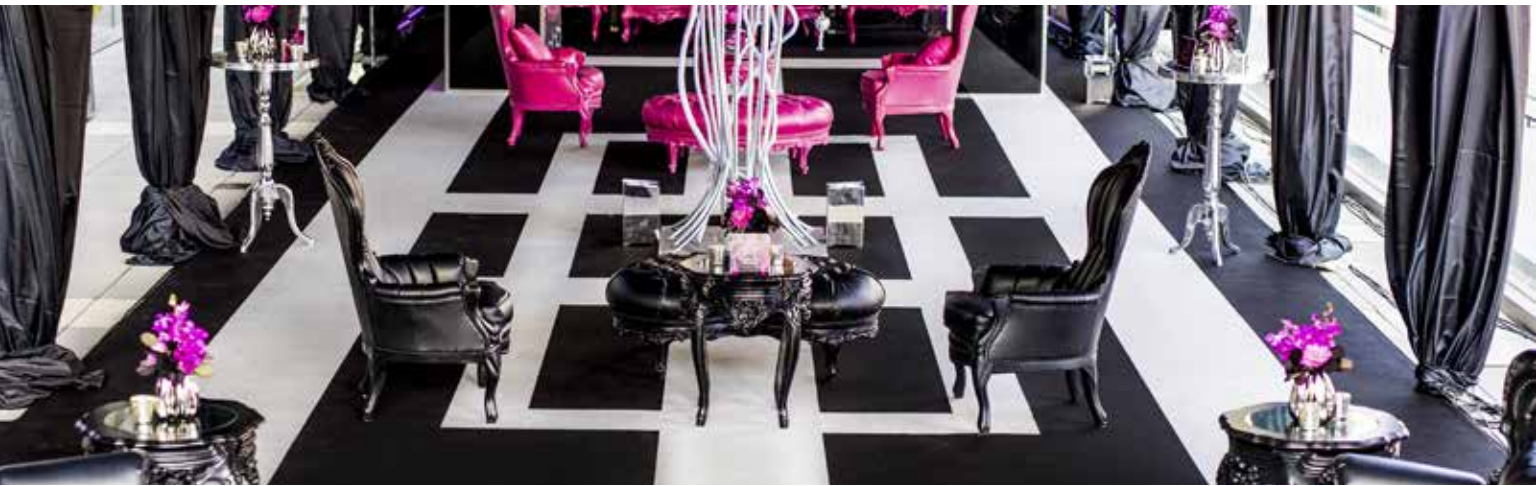
1/4 ROUND WALDORF



ASTORIA



VICTORIAN & BAROQUE



MODULAR VICTORIAN SOFA SYSTEM & CHAIR

Fanciful & romantic, our Victorian collection is perfect for any event that wants to conjure up a more refined period of time. Hand carved of solid wood with nailhead detailing, these pieces have been manufactured specifically for the rental industry.



CONVENTRY



WARWICK



WINDSOR



CAROUSEL



HERITAGE



WENTWORTH



LEOPOLD



CLARENCE



4 x CAROUSELS



HERITAGE, CAROUSEL AND WENTWORTH MODULAR VICTORIAN SYSTEM

BAROQUE

Our Baroque collection is ornate & eye catching for events that want to create a lasting impression. Also hand-carved from solid wood by artisans with nailhead detailing. The deep tufting gives it an additional air of sophistication.



MADAME



VICTORIA



COUNTESS



KING



ELIZABETH



PROVENCE 1/2 OR OVAL CREDENZA

BRANDABLE GLASS TOP
CAN WORK AS 2 HALVES

BRANDABLE GLASS TOP



HENRY



DUKE



EMPIRE



LIE ON TOP OF OUR METROPOLITAN OR PRESCOTT FOR AN AWE INSPIRING SWEET TABLE. REGAL IS THE SAME SIZE!
USE MEF GRAPHIC VINYL MEDIA TO MAKE AN EYE CATCHING TABLE SEATING CHART!

REGAL MIRROR

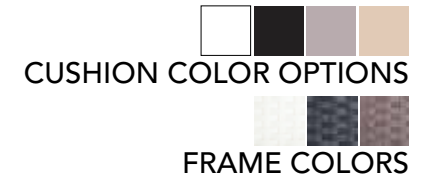


SAVOY MODULAR SOFA SYSTEM



SAVOY MODULAR SOFA SYSTEM

Proprietary "L" cushion for left or right configuration



SAVOY CORNER



SAVOY MIDDLE



SAVOY CUBE OTTOMAN/SIDE TABLE

The Savoy collection is created on the same design platform as the Mondrian and Regency and works in tandem with both. The plastic wicker frames are available in white, black or brown, the fabric is both fade and mold resistant, and accent pillows are available in eight complementary colors. The proprietary "L" cushion has been designed so only one size of back or seat cushion is required regardless of the sofa frame size. This is guaranteed to prevent mistakes on inventory being prepped for delivery!



Extra cushion sets can be purchased separately to double or triple your inventory combinations.

SAME STEEL FEET AS MONDRIAN & REGENCY

VELCRO CLOSURES ON CUSHIONS - EASY TO WASH



WHITE



BLACK



LIME



CYAN



MOCHA



ORANGE



RED



GREY

CUSTOM COLORS ON SPECIAL ORDER

THROW PILLOWS



DINING CHAIRS & BAR STOOLS



DINING CHAIRS & BAR STOOLS

ALL MEF DINING CHAIRS & BAR STOOLS ARE STACKABLE



SEAT COLOR OPTIONS FOR DELANO & PARAMOUNT



FRAME COLORS



DELANO CHAIR SINCE 2004
STACKS 10 HIGH

New for 2016, sleek tapered legs available in chrome, gold and rose gold. Our die-cast foot comes with a recessed replaceable floor protector.



PARAMOUNT BAR STOOL
STACKS 12 HIGH

One-piece removable hinged cushion, comes on and off in seconds, preventing rips or scuffs in transport and allowing the stools to be stacked up to 12 high. Extra cushions can be purchased separately, allowing your stool inventory to be a rainbow of possibilities with minimal investment.



AVAILABLE COLORS



BELLA CHAIR
STACKS 6 HIGH

Not normally stackable, this in-demand design has been modified by MEF to now stack, an essential element for all rental chairs.



AVAILABLE COLORS



CASPER CHAIR
STACKS 7 HIGH

The round-backed, transparent chair has become the new rental staple over the last decade. Our version has a wide, roomy seat, an elegant, stylized leg and a curved back for comfort.

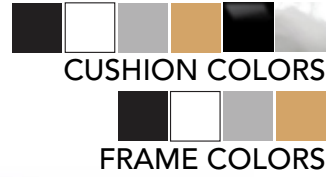


MIRAGE CASPER VICTORIA

CASPER IS A STANDARD SIZED DINING CHAIR!

CHAIRS & STOOLS

A classic and elegant style, this chair is normally made from wood, however our chair has a lightweight aluminum frame with a carved wood appearance making our chair a pleasure to transport. The back medallion and seat cushions are easily removed (allowing for last minute changes on site) and extra sets are available for purchase giving countless color combinations.



LOUIS XV CHAIR
STACKS 5 HIGH WITH SEAT CUSHION



LOUIS XV BAR STOOL
STACKS 5 HIGH WITH SEAT CUSHION

This collection is hand made of solid stainless steel that has been stamped & welded for optimum durability & strength. The polished mirror-like surfaces will add glamour to any event.



BRISTOL CHAIR
STACKS 4 HIGH



BRISTOL BAR STOOL
STACKS 4 HIGH

A variant on our classic louis xv chair. The back medallion is made of transparent acrylic to give a more modern look & feel. The chair seat is still interchangeable.



LOUIS XV CLEAR MEDALLION CHAIR
STACKS 5 HIGH WITH SEAT CUSHION



LOUIS XV CLEAR MEDALLION STOOL
STACKS 5 HIGH WITH SEAT CUSHION

This 1927 classic French bistro chair's popularity has yet to slow down. We have expanded its appeal it by offering it in a mirror-like finish in gold, rose gold and stainless steel.



FACTORY CHAIR
STACKS 13 HIGH



FACTORY BAR STOOL
STACKS 13 HIGH



BARS, FOOD STATIONS, DJ BOOTHS & FOH SCREENS



BARS & FOOD STATIONS

The backbone of our collection & essential to any event, our stainless steel bars have been perfected through years of development and thousands of rentals. All joints have been welded creating a strong durable frame. The acrylic & metal inserts are ideal for branding or beautiful on their own. The frames are available in five colors with seven colors of inserts giving you an extensive range of combinations. Removable shelves and speed rails are available to increase functionality on events and maximize space in trucks and for storage.



FRAME COLORS



ACRYLIC & MIRRORED METAL INSERTS



WHITE



BLACK



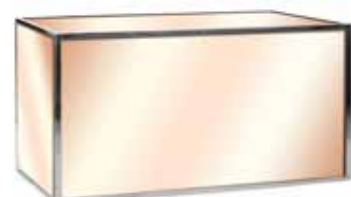
RED



GOLD MIRROR



MIRROR



ROSE GOLD MIRROR



WOOD GRAIN WITH LIVE EDGE TOP



NEW! NATURAL LIVE EDGE WOOD TOPS MADE FROM SOLID CANADIAN CHERRY AVAILABLE FOR 6' & 4' BARS WITH COORDINATING FRONT AND SIDE VENEERED PANELS



KNOCK DOWN AVENUE 6' WITH REMOVABLE SHELF & SPEEDRAIL



FRAME COLORS



ACRYLIC & MIRRORED METAL INSERTS



ROAD CASE AVAILABLE FOR KNOCK DOWN AVENUE 6'

DJ BOOTHS & FOH SCREENS



AVENUE 4' DJ BOOTH

EXPLICITLY DESIGNED TO GIVE A MODERN & CLEAN AESTHETIC TO SOUND AND LIGHTING EQUIPMENT

USE MONTCALM WITH A STANDARD 6' OR 8' FOLDING TABLE



AVENUE 6' AVENUE 6' & 4' INSIDE VIEW WITH REMOVABLE SHELF & SPEEDRAIL - SOLD SEPARATELY OR AS PART OF A PACKAGE



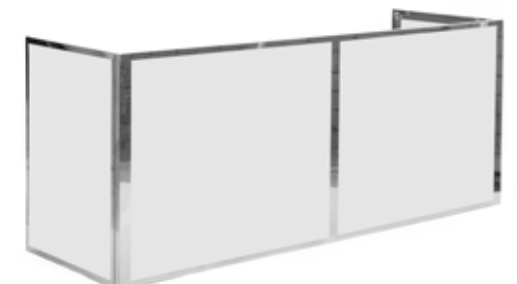
AVENUE 1/4 ROUND *FIXED SHELF INCLUDED WITH 1/4 & 1/8 ROUND BARS



AVENUE 1/8 ROUND



MONTCALM 6'



MONTCALM 8'



BAR BACKS & CREDENZAS



BAR BACKS & CREDENZAS

Complementing our bar & food station equipment, our barbacks are designed for ease of use during your event. The enclosed top level can be illuminated & branded. Built of the same heavy gauge stainless steel as our bars, these units will support the weight you require!



ACRYLIC & MIRRORED METAL INSERTS



ESSEX



GRAND



MORGAN

Same top - multiple size legs make for easily transformable inventory. Using our proprietary spring locking mechanism, no tools are required. All models break down on site for ease of transport. Cases available for sets of 4 tables, inserts and all leg sizes.



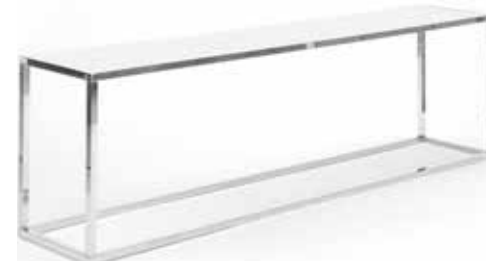
ACRYLIC & MIRRORED METAL INSERTS



RALEIGH 40
40" x 96"



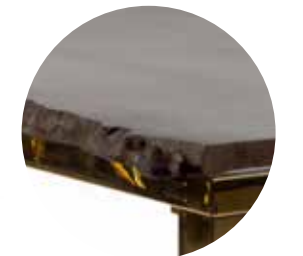
BENTLEY 40
40" x 72"



RALEIGH 30
30" x 96"



BENTLEY 30
30" x 72"



NEW! NATURAL LIVE EDGE WOOD TOPS MADE FROM SOLID CANADIAN CHERRY AVAILABLE FOR RALEIGH AND BENTLEY



TOWERS & ROOM DIVIDERS



These multi-functional towers can be printed with our vinyl graphic media or illuminated and used as room dividers, entryways, pedestals, and for corporate branding. Available in 10' and 5' heights, each work with custom stabilizer plates and tops that house adapters for our Borealis battery operated LED.



FRAME COLORS
ACRYLIC & MIRRORED METAL INSERTS



RIALTO



BEACON



Our Barclay room divider allows for a self standing yet thin solution to separating spaces, and branding. Units can be hinged together to make a continuous angled or straight section, its size is only limited by your needs. Each unit stands 8' tall in the same dimensions as our Regal mirror and rectangular dining tables, making storage and stacking of custom cases simple.



BARCLAY



COFFEE & END, COCKTAIL & CRUISER TABLES



COFFEE & END TABLES

Designed with the same proportions as our Mondrian, Regency & Savoy ottomans, our coffee & end tables are easily integrated into any lounge floor plan.



FRAME COLORS



ACRYLIC & MIRRORED METAL INSERTS



MERCER



MERCER SILHOUETTE



CARLETON

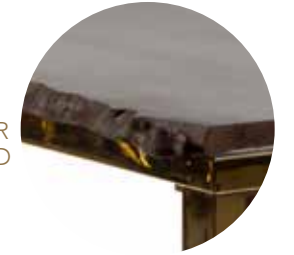


CARLETON SILHOUETTE



BENTLEY COFFEE TABLE

NEW! NATURAL LIVE EDGE WOOD TOPS MADE FROM SOLID CANADIAN CHERRY AVAILABLE FOR MERCER, CARLETON, BENTLEY AND CAPITAL



COCKTAIL & CRUISER TABLES



GRAMERCY 30"



GRAMERCY 40"



CAPITAL 40"

EASILY MODIFIABLE WITH TWO POLE LENGTHS FOR DUAL FUNCTIONALITY



VERSAILLES 30"



VERSAILLES 40"



VERSAILLES COLOR

COMMUNAL TABLES 40"



DINING TABLES 30"



The acrylic or metal inserts eliminate the need for linens and provide a clean, modern look. They can be printed with decorative or branded images depending on the event. Compatible with all MEF stools.



FRAME COLORS



ACRYLIC & MIRRORED METAL INSERTS

Our dining table collection will solve all your needs whether your event be an intimate dinner for 50 or a corporate lunch for five hundred. With three leg variations available, your table can be changed from dining to communal height with the click of a button or you can use the silhouette leg to give a softer, more romantic look to your table. Compatible with all MEF chairs.



96" x 42"
METROPOLITAN COMMUNAL
SEATS 10



72" x 72"
KENSINGTON COMMUNAL
SEATS 12



60" x 60"
AVALON COMMUNAL
SEATS 8



36" x 36"
BOWERY COMMUNAL
INTERCHANGEABLE INSERT WITH
CARLETON COFFEE TABLE
SEATS 4



72" x 30"
RIVINGTON
INTERCHANGEABLE INSERT
WITH 6' BAR
SEATS 8



72" x 30"
K/D RIVINGTON
ROAD CASE AVAILABLE FOR
KNOCK DOWN RIVINGTON
SEATS 8



96" x 42"
METROPOLITAN DINING



72" x 72"
KENSINGTON DINING



60" x 60"
AVALON DINING



96" x 42"
METROPOLITAN SILHOUETTE



72" x 72"
KENSINGTON SILHOUETTE



60" x 60"
AVALON SILHOUETTE



96" x 42"
PRESCOTT
RECESSED LEG FOR BANQUETTES HIDDEN
LOCKING & FOLDING LEG MECHANISM
SEATS 10



36" x 36"
BOWERY DINING



36" x 36"
BOWERY SILHOUETTE

LIVE EDGE DINING TABLE



FRAME COLORS

To create a lasting impression, look no further than our live edge dining tables. Made from solid Canadian cherry with beautiful visible wood grain and a natural live wood edge. Tops can be mounted on Metropolitan or Prescott frames



96" x 42" x 30"
LIVE EDGE SOLID CHERRY

CAN BE USED WITH 30" DINING & SILHOUETTE
OR 40" COMMUNAL LEGS.
SEATS 10

TRANSPARENT DINING TABLES



60" x 60" x 30"
SUPERNATURAL
SEATS 8



96" x 42" x 30"
SUPERNATURAL

CAN BE USED WITH 30" DINING & SILHOUETTE
OR 40" COMMUNAL LEGS.
SEATS 10

Our supernatural dining tables are available in both rectangular or square options. The solid acrylic legs are airy and glamorous in appearance, yet substantial enough to hold the weight of the solid glass top. The supernatural legs are designed with our proprietary pin lock and are interchangeable with the Metropolitan, Kensington and Avalon tops.



LIGHTING



LIGHTING

This collection fills the need for delicate, romantic lighting without the fragility normally associated with chandeliers. All pieces are made from die cast aluminum alloy and then plated for a beautiful, reflective surface. For added convenience, our hanging chandelier comes ready to rig straight out of the crate resulting in much less chance for damage.



METAL COLORS



Decorative lighting is the finishing element to any event. Our offering ranges from exquisitely ornate to stylishly modern. Explicitly made for events, all pendants come ready to plug in eliminating time-consuming hard-wiring and many either collapse or break down for transport and storage. Custom built road cases are available complete with drawers for extra parts and lightbulbs.



MAJESTIC 36"
ALSO AVAILABLE IN 27"



SHADE COLORS



BODY COLORS

SEPARATE
ROAD CASES
AVAILABLE FOR
OPERA SHADE
& OPERA BODY

OPERA SHADE
71" w 52" h



EMPRESS FLOOR LAMP



OPERA BODY



IMPERIAL TABLE LAMP



TRIOMPHE
58" w144" h
ONE PER CASE

AVAILABLE
BODY & SHADE COLORS

COLLAPSES IN
MINUTES INTO
A CASE ON
WHEELS ONLY
20" WIDE!

AVAILABLE SHADE COLORS
AVAILABLE BODY COLORS

AVAILABLE BODY COLORS



ROYALTON ONE PER CASE

AVAILABLE SHADE COLORS
AVAILABLE BODY COLORS

Dramatic and commanding, our floor lamps create atmosphere and mood.



SHADE COLORS
CAN BE
CHANGED AS
NEEDED PER
EVENT

BASTILLE TWO PER CASE

SHADES CAN BE
INTERCHANGED
WITH BASTILLE
FLOOR LAMP

SPINDLE TWO PER CASE

AVAILABLE COLORS



BOURGIE FOUR PER CASE

SPIRE FOUR PER CASE



Our Illuminato collection is ideal to add atmospheric lighting to any event, both indoor or outdoor. Our programmable led lights are battery-operated with an 8 hour life and are remote-controlled. All items come with led light.

Made of shimmering strands of reflective chain wrapped by bands of mirrored chrome trim, the Marais and Odeon add brilliance to any venue with a sparkle of Hollywood glamour



MARAIS
ONE PER CASE



ODEON
FOUR PER CASE



GLOBO 20"



GLOBO 24"



GLOBO 32"



NICE



SCALA COMPLETE



PROSECCO



LED



BOXWOOD FOR NICE



TOPIARY



6' BOXWOOD FOR PROSECCO



8' BOXWOOD FOR PROSECCO

Boxwood hedges and spheres help create lush backdrops and dividers to liven up any venue. Available to fit into our Illuminato vessels or on their own. Custom sizes available in addition to replacement sheets for repair or to build your own walls.

ACCESSORIES



WIDE FORMAT PRINTER GRAPHIC MEDIA



NEW!
20 HOUR
BATTERY
COLOR
CHANGING
LED



BOREALIS



Borealis is the result of years of R&D to develop the most practical lighting fixture for illuminated bars and structures for events. With a 20hr battery life and incredible lighting intensity, Borealis can be controlled by remote control or by a downloadable app on iPhone or Android devices. It can be attached to a wide variety of MEF products with its twist and lock machined aluminum end cap. Optional charging cases are available.



HORIZON ROPE HORIZON COLORS

PEABODY COLORS



CHAIR COVER



PEABODY HORIZON

MEF's new graphic media is available in printable format with a transparent backing for wide format eco-solvent printers or in a variety of opaque solid colors including metallic gold and silver chrome. It can be used on all MEF acrylic inserts, mirrors, dance floors and polycarbonate chairs. The removable and repositionable film is easier than ever to install in a dry application and is a snap in wet. Removal within a short period after application takes only seconds, saving time money and headache. Take event design to a new level and transform your inventory!



GRAPHIC MEDIA



LEG 30"/40"/ SILHOUETTE CASE



METROPOLITAN CASE



GRAMERCY CASE



KENSINGTON CASE



AVALON CASE



BOURGIE CASE

ODEON CASE



MARAIS CASE



CARLETON CASE



MERCER CASE



BASTILLE CASE



SPINDLE CASE



BENTLEY CASE



PEABODY & HORIZON CASE



TRIOMPHE CASE



BULB CASE

ROAD CASES



TOOL CASE



SPIRE CASE



OPERA CASE



MAJESTIC CASE



K/D RIVINGTON CASE