

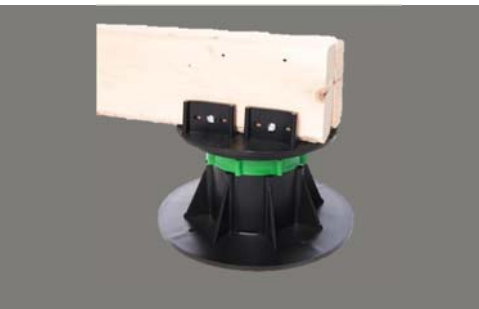


THANKS TO OUR
SUPPORTS ADJUST YOUR
TERRACE FROM 2" TO 13"



Deck TO/GO offers adjustable supports for all types of materials (wood, porcelain, stone or joists). All our supports are adjustable in height and will allow you to create the terrace of your dreams.

**ADJUSTABLE SUPPORT
DTG – LUMBER JOIST**



**ADJUSTABLE SUPPORT FOR
DTG – DECK
TILES DECK WISE
COMPATIBLE DECK TILES**



**ADJUSTABLE SUPPORT
DTG – PAVERS**



SIZES

SKU

- S1:** 1.96"-2.55" 842315030392
- S2:** 2.75"-3.54" 842315030408
- S3:** 3.15"-4.53" 842315030415
- S4:** 4.72"-6.69" 842315030422
- S5:** 5.70"-8.85" 842315030460
- S6:** 8.07"-13.19" 842315030491

Box of 8

SIZES

SKU PRESTIGE

DECK WISE

compatible

- S1:** 1.57"-2.17" 842315030125 842315030507
- S2:** 2.36"-3.15" 842315030126 842315030514
- S3:** 2.75"-4.13" 842315030149 842315030521
- S4:** 4.33"-6.30" 842315030156 842315030538
- S5:** 5.31"-8.46" 842315030453 842315030545
- S6:** 7.67"-12.80" 842315030484 842315030552

Box of 8

SIZES

SKU

- S1:** 1.57"-2.17" 842315030354
- S2:** 2.36"-3.15" 842315030361
- S3:** 2.75"-4.13" 842315030378
- S4:** 4.33"-6.30" 842315030385
- S5:** 5.31"-8.46" 842315030446
- S6:** 7.67"-12.80" 842315030477

Box of 8

FEATURES AND BENEFITS

- The supports are made of polypropylene a neutral, non-organic material that does not affect the roofing.
- Each pedestal can support a total load of 800 pounds. Considering a load of 100 lbs per square foot you can install an adjustable support every 2' if your roof allows it. If you install a pedestal every 4 ft the load capacity per square foot will be 50 lbs per square foot.
- Deck TO/GO offers a 1 year replacement warranty for residential use on supports and accessories.
- You can choose to fix your adjustable supports to your existing floor, if needed. However, this is not mandatory and complicates the installation.
- It is very important **NOT** to fix the supports to your roof.
- Confirm with your local engineer that the installation meets building standards for your area for both roof and wind loads.
- If your installation is in a very windy area, your local engineer will probably recommend that you close the sides with planks of wood and in some cases, add flower boxes as counterweight on the edge of the deck.



The DTG-extender is designed to be used with the DTG-adjustable pedestals and the DTG-Collar to add between 65 to 105 mm to your pedestal system. Collar included.

Box of 8 SKU: 842315030095

The slope corrector allows to adjust the slope from 0 to 5 degrees. This product is compatible with all the DTG-pedestal supports. Sold individually.

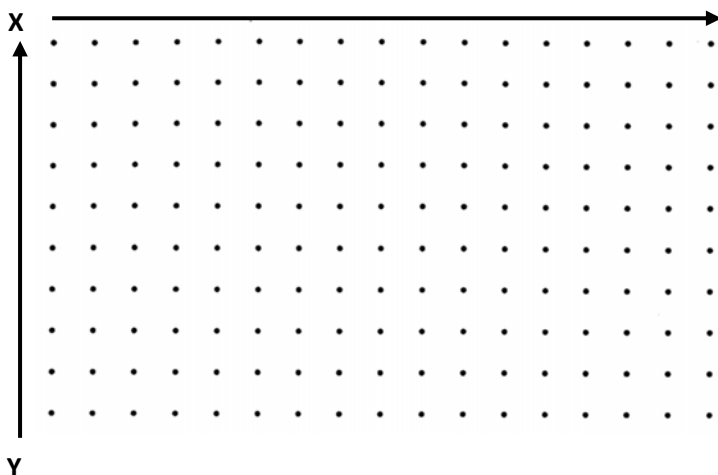
SKU: 842315030293



SHEET TO CALCULATE THE NUMBER OF SUPPORTS NECESSARY TO BUILD YOUR TERRACE

The spreadsheet can be downloaded from our website.

1. I use the graph if needed and I draw my terrace



2. I calculate the number of adjustable supports I need:

Number of tiles in Y = + 1st support = = Y Result

Number of tiles in X = + 1st support = = X Result

I multiply the Y result by the X result:

→ x =

Total number of adjustable supports needed for my project

TO/GO INFRASTRUCTURE INC. PHONE: 1-844-246-2014

INFO@DECKTOGO.COM

WWW.DECKTOGO.COM



Our epoxy range

TO/GO OFFERS OVER A MILLION COLOR POSSIBILITIES.

Create your own design in just a few clicks.

www.epoxytogo.com

