



User Manual

FERREX[®]

704518
1010W BELT SANDER



**Product
Info**



<https://help.tools/>

Read all safety warnings and all instructions thoroughly before operating this product.

Ensure you keep your manual in a safe place for future reference.

IM ed 1; 02/2022

QR codes take you where you want to go quickly and easily

Whether you require product information, spare parts or accessories, details on warranties or after sales service, or if you want to watch a product demonstration video, our QR codes will take you there in no time at all.

What is a QR code?

A QR-code (QR=Quick Response) is a type of matrix that can be read with a smartphone camera and that contains a link to a website or contact details, for example.

Advantage: You are not required to manually enter a website address or contact details.

How it works

To scan the QR code, all you need is a smartphone with QR codes reader software and an Internet connection*. This type of software can be downloaded for free from your smartphone's app store.

Try it out now

Just scan the QR code with your smartphone and find out more about the Aldi product you have purchased*.



* Depending on your tariff you may be charged for the connection.



FERREX[®]

1010W Belt Sander

Warranty details

REGISTER YOUR PURCHASE AT www.aldi.com.au/en/about-aldi/product-registration/ TO KEEP UP-TO-DATE WITH IMPORTANT PRODUCT INFORMATION.

The product is guaranteed to be free from defects in workmanship and parts for a period of 36 months from the date of purchase. Defects that occur within this warranty period, under normal use and care, will be repaired, replaced or refunded at our discretion. The benefits conferred by this warranty are in addition to all rights and remedies in respect of the product that the consumer has under the Competition and Consumer Act 2010 and similar state and territory laws.

Our goods come with guarantees that cannot be excluded under the Australian Consumer Law. You are entitled to a replacement or refund for a major failure and for compensation for any other reasonably foreseeable loss or damage. You are also entitled to have the goods repaired or replaced if the goods fail to be of acceptable quality and the failure does not amount to a major failure.

AFTER SALES SUPPORT

 **(AUS) 1300 889 028**
(toll free)

e-mail: info.aldi@positecgroup.com
MODEL No.: PBS101.A • 02/2022 • 704518



Contents

Pack contents / parts	2
Description of symbols	3
General safety warnings	4
Parts list	7
Assembly	8
Attaching the dust bag	8
Operation	8
Adjusting the auxiliary handle	8
On/off trigger	9
Switch lock-on button	9
Variable speed control dial	9
Belt centering control	10
Front plate	10
Working hints for your belt sander	10
Maintenance	11
Environmental protection	12
Warranty	12
What your 3 year warranty means	13
Service support	13
Accessories and after sales parts	14
Troubleshooting	15
Technical specifications	16

Pack contents / parts

Congratulations on the purchase of your FERREX® 1010W Belt Sander. When you open your packaging, first remove all items and check there are no parts damaged or missing. If you find anything wrong, do not operate the product until the parts have been replaced or the fault has been rectified. Failure to do so could result in serious personal injury.

First time users or inexperienced operators pay particular attention to the operation of the 1010W Belt Sander, including details of starting and stopping and correct use of the 1010W Belt Sander on pages 8-11, as well as the maintenance instructions on pages 11-12.

Intended use of 1010W Belt Sander

NOTE: This product is for private domestic DIY use only. It is not suitable for commercial or trade use.

This 1010W Belt Sander is intended for dry sanding—with high removal capacity—of wood, plastic, metal, filler as well as varnished surfaces.

The 1010W Belt Sander is to be used only for its prescribed purpose. Any other use is deemed to be a case of misuse.

Contents of carton

- 1 x 1010W Belt Sander
- 1 x 80 grit sanding belt (fitted)
- 1 x Dust bag
- 1 x Instruction manual
- 1 x Warranty Card & Certificate



WARNING! Please read and understand this instruction manual before use and keep it for your future reference. Your product should only be passed on together with this instruction manual.

Description of symbols

The instruction manual, rating plate, or on the product itself, may show these symbols. These represent important information about the product or instructions on its use.



Read instruction manual before operating this machine



Warning



Wear hearing protection.
Wear eye protection.
Wear breathing protection.



Double insulation



Conforms to relevant standards for electrical safety and electromagnetic compatibility



36 Months Warranty



The box is recyclable at the kerbside.



The inserts are recyclable at the kerbside.

General safety warnings



WARNING: Read all safety warnings, instructions, illustrations and specifications provided with this power tool. *Failure to follow the warnings and instructions may result in electric shock, fire and/or serious injury.*

Save all warnings and instructions for future reference.

The term “power tool” in the warnings refers to your mains-operated (corded) power tool or battery-operated (cordless) power tool.

1) Work area safety

- a) **Keep work area clean and well lit.** *Cluttered or dark areas invite accidents.*
- b) **Do not operate power tools in explosive atmospheres, such as in the presence of flammable liquids, gases or dust.** *Power tools create sparks which may ignite the dust or fumes.*
- c) **Keep children and bystanders away while operating a power tool.** *Distractions can cause you to lose control.*

2) Electrical safety

- a) **Power tool plugs must match the outlet. Never modify the plug in any way. Do not use any adapter plugs with earthed (grounded) power tools.** *Unmodified plugs and matching outlets will reduce risk of electric shock.*
- b) **Avoid body contact with earthed or grounded surfaces, such as pipes, radiators, ranges and refrigerators.** *There is an increased risk of electric shock if your body is earthed or grounded.*
- c) **Do not expose power tools to rain or wet conditions.** *Water entering a power tool will increase the risk of electric shock.*
- d) **Do not abuse the cord. Never use the cord for carrying, pulling or unplugging the power tool. Keep cord away from heat, oil, sharp edges or moving parts.** *Damaged or entangled cords increase the risk of electric shock.*
- e) **When operating a power tool outdoors, use an extension cord suitable for outdoor use.** *Use of a cord suitable for outdoor use reduces the risk of electric shock.*

f) If operating a power tool in a damp location is unavoidable, use a residual current device (RCD) protected supply. *Use of an RCD reduces the risk of electric shock.*

3) Personal safety

- a) Stay alert, watch what you are doing and use common sense when operating a power tool. Do not use a power tool while you are tired or under the influence of drugs, alcohol or medication.** *A moment of inattention while operating power tools may result in serious personal injury.*
- b) Use personal protective equipment. Always wear eye protection.** *Protective equipment such as dust mask, non-skid safety shoes, hard hat, or hearing protection used for appropriate conditions will reduce personal injuries.*
- c) Prevent unintentional starting. Ensure the switch is in the off-position before connecting to power source and/or battery pack, picking up or carrying the tool.** *Carrying power tools with your finger on the switch or energising power tools that have the switch on invites accidents.*
- d) Remove any adjusting key or wrench before turning the power tool on.** *A wrench or a key left attached to a rotating part of the power tool may result in personal injury.*
- e) Do not overreach. Keep proper footing and balance at all times.** *This enables better control of the power tool in unexpected situations.*
- f) Dress properly. Do not wear loose clothing or jewellery. Keep your hair, clothing and gloves away from moving parts.** *Loose clothes, jewellery or long hair can be caught in moving parts.*
- g) If devices are provided for the connection of dust extraction and collection facilities, ensure these are connected and properly used.** *Use of these devices can reduce dust-related hazards.*
- h) Do not let familiarity gained from frequent use of tools allow you to become complacent and ignore tool safety principles.** *A careless action can cause severe injury within a fraction of a second.*

4) Power tool use and care

- a) Do not force the power tool. Use the correct power tool for your application.** *The correct power tool will do the job better and safer at the rate for which it was designed.*
- b) Do not use the power tool if the switch does not turn it on and off.** *Any*

power tool that cannot be controlled with the switch is dangerous and must be repaired.

- c) Disconnect the plug from the power source and/or the battery pack from the power tool before making any adjustments, changing accessories, or storing power tools.** *Such preventive safety measures reduce the risk of starting the power tool accidentally.*
- d) Store idle power tools out of the reach of children and do not allow persons unfamiliar with the power tool or these instructions to operate the power tool.** *Power tools are dangerous in the hands of untrained users.*
- e) Maintain power tools. Check for misalignment or binding of moving parts, breakage of parts and any other condition that may affect the power tool's operation. If damaged, have the power tool repaired before use.** *Many accidents are caused by poorly maintained power tools.*
- f) Keep cutting tools sharp and clean.** *Properly maintained cutting tools with sharp cutting edges are less likely to bind and are easier to control.*
- g) Use the power tool, accessories and tool bits etc. in accordance with these instructions, taking into account the working conditions and the work to be performed.** *Use of the power tool for operations different from those intended could result in a hazardous situation.*
- h) Keep handles and grasping surfaces dry, clean and free from oil and grease.** *Slippery handles and grasping surfaces do not allow for safe handling and control of the tool in unexpected situations.*

5) Service

- a) Have your power tool serviced by a qualified repair person using only identical replacement parts.** *This will ensure that the safety of the power tool is maintained.*

6) Recommendation

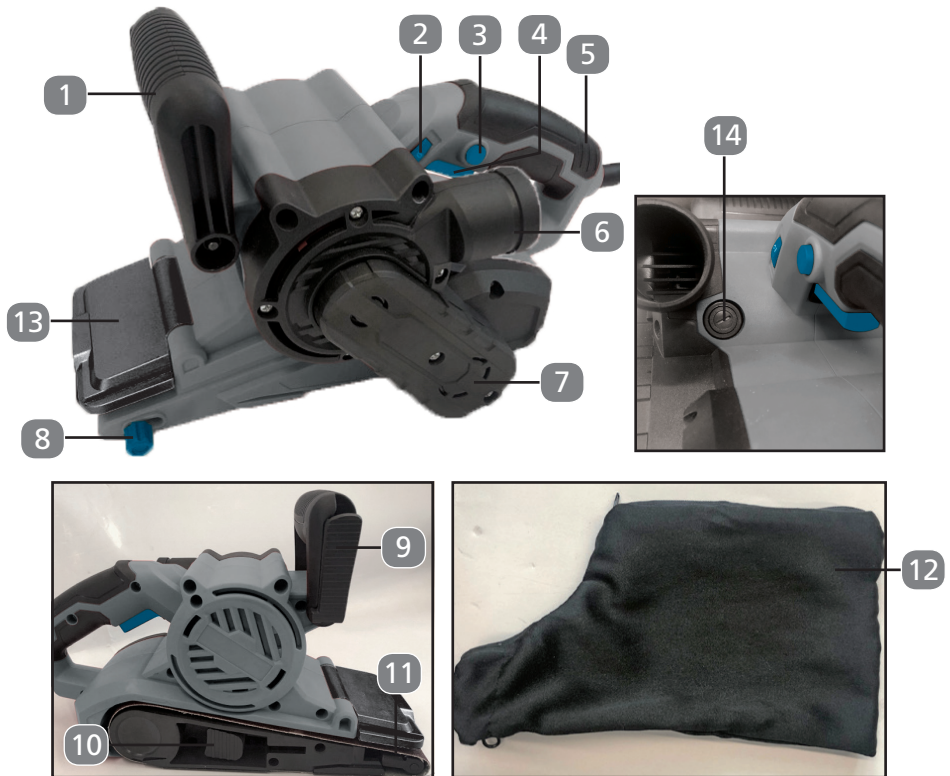
Recommendation that the tool always be used via a residual current device having a rated residual current of 30 mA or less.

Safety warnings for belt sander

- a) Hold the power tool by insulated gripping surfaces, because the sanding surface may contact its own cord.** *Cutting a "live" wire may make exposed metal parts of the power tool "live" and could give the operator an electric shock.*

Parts list

1. Auxiliary handle
2. Variable speed control dial
3. Lock-on button
4. On/off trigger
5. Hand grip
6. Dust extraction outlet
7. Belt cover
8. Belt adjustment control knob
9. Auxiliary handle locking lever
10. Sanding belt lever
11. Sanding belt
12. Dust collection bag
13. Front plate
14. Carbon brush access



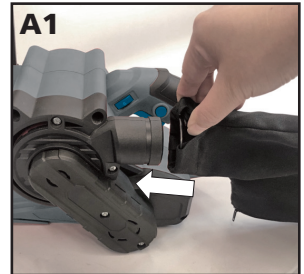
Assembly



WARNING: Ensure the product is disconnected from the mains power supply before attempting any assembly.



WARNING: To prevent the possibility of sanding dust or foreign body being thrown into your face or eyes, never attempt to use your sander without the dust collection bag properly installed.



Attaching the dust collection bag

You must use the dust collection bag (12) provided to collect the dust produced during sanding.

Open the dust collection bag bracket with your hand and then slide it onto the dust extraction outlet (6) on the belt sander (Fig. A1). When the dust collection bag (12) is full, remove and empty by opening the zip on the dust collection bag (12) (Fig. A2).



NOTE: For more efficient operation, empty the dust collection bag (12) every 5-10 mins.

Operation

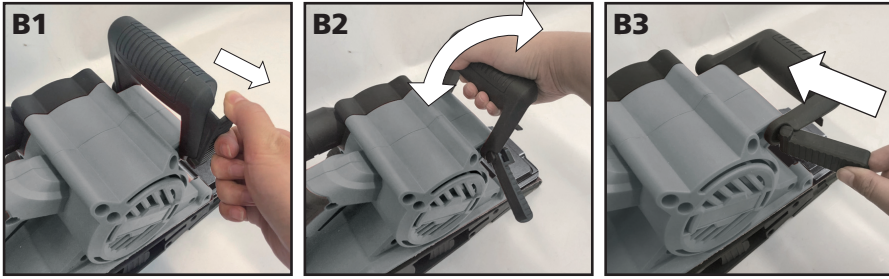
Adjusting the auxiliary handle



WARNING! Always hold your belt sander firmly with both hands when operating.

For your personal safety it is recommend using the auxiliary handle (1) at all times.

To adjust the auxiliary handle (1), release the auxiliary handle locking lever (9) (Fig. B1) and rotate the auxiliary handle (1) up or down to the most comfortable and balanced position (Fig. B2). Then push in the auxiliary handle locking lever (9) to the original position to lock the auxiliary handle (1) (Fig. B3).

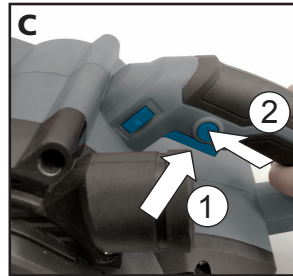


On/off trigger

Depress the on/off trigger (4) to start the belt sander and release to stop the belt sander (Fig. C).

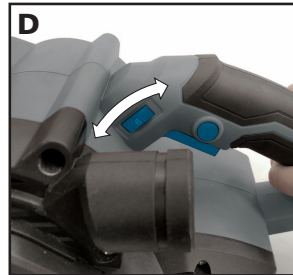
Switch lock-on button

For continuous use, without having to keep your finger constantly on the on/off trigger (4) first depress on/off trigger (4) then press the lock on button (3). The belt sander is now locked on for continuous use. To switch off your tool just depress and release the on/ off trigger (4) (Fig. C).



Variable speed control dial

Adjust the variable speed control dial (2) to increase or decrease the speed according to the material and sanding belt specification to be used (also possible during no load operation) (Fig. D). See the table below for general guidance on speed selection. Avoid prolonged use at very low speed as this may damage your sander’s motor.



Material	Speed selection	Belt grit
Solid wood	5-6	80
Veneer	2-4	150
Chipboard	1-5	60/80
Plastics	2-5	100
Steel	5-6	80
Paint removal	6	40/60
Balsa wood	1-3	100
Acrylic	1-2	100

Belt adjustment control

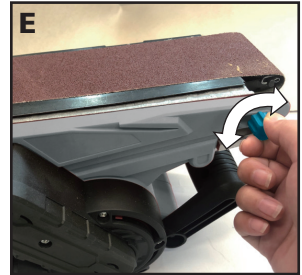


WARNING! Wear eye protection before carrying out a belt adjustment.



WARNING! Ensure the product is disconnected from the mains power supply before attempting any operation.

Turn the machine upside down, hold it firmly with one hand, start the belt sander and then release the on/off trigger (4) immediately after observing tracking of sanding belt. If the belt runs outward, turn belt adjustment control knob (8) anti-clockwise and clockwise if belt runs inward (Fig. E). Adjust the belt until the the belt is in the centre of the base plate. Belt life will be greatly increased by keeping the tracking adjustment set properly.



Front plate

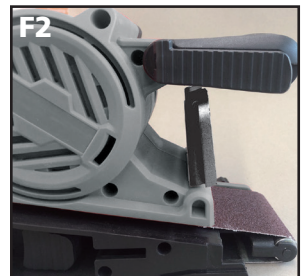
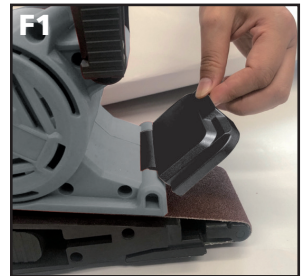


WARNING! Ensure the product is disconnected from the mains power supply before attempting any operation.



WARNING! keep your fingers clear of the belt while sanding.

When sanding tight corners, you can use the front plate (13) to get the better sanding result (Fig. F1). Lift the front plate (13) up to the locked position. You do not need to hold it during sanding while the front plate (13) is locked in place (Fig. F2).



Working hints for your belt sander

If your belt sander becomes too hot, especially when used at low speed, set the speed to maximum and run with no load for 2-3 minutes to cool the motor.

Avoid prolonged usage at very low speed.

Always use a sanding belt (11) suited to the material you wish to sand.

Always ensure the work-piece is firmly held or clamped to prevent movement.

Support large panels close to the sanding area.

Any movement of the material may affect the quality of the sanding finish.
Start your sander before sanding and turn off only after stopping.

For best results sand wood in the direction of the grain.

Do not start sanding without the sanding belt (11) fitted.

Empty the dust collection bag (12) every 5 minutes or sooner to ensure efficient dust collection.

Maintenance

Replacing the drive belt

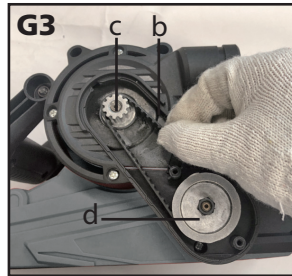


WARNING! Ensure the product is disconnected from the mains power supply before attempting any maintenance tasks.



WARNING! Wear protective gloves when replacing the drive belt.

- 1) Remove the screws (a) from the belt cover (7) using a Phillips screwdriver (not supplied) by turning it anti-clockwise. And then remove the belt cover (7) (Fig. G1, G2).
- 2) Carefully cut the old drive belt if it is not broken and remove it from the belt sander.
- 3) Fit the new drive belt (b) around the large pulley (d) first.
- 4) Then install onto the small pulley (c) by rotating clockwise and pushing the drive belt (b) shown around the small pulley at the same time. The drive belt (b) will be a tight fit (Fig. G3).
- 5) Fit the belt cover (7) and then screws (a) by turning them clockwise using a Phillips screwdriver (not supplied).



General maintenance

Your power tool requires no additional lubrication or maintenance. There are no user serviceable parts in your belt sander. Never use water or chemical cleaners to clean your belt sander. Wipe clean with a dry cloth. Always store your belt sander in a dry place. Keep the motor ventilation slots clean. Keep all working controls free of dust. Occasionally you may see sparks through the ventilation slots. This is normal and will not damage your belt sander.

If the supply cord is damaged, it must be replaced by the manufacturer, its service agent or similarly qualified persons in order to avoid a hazard.

Carbon brushes

When the carbon brushes wear out, the belt sander will spark and/or stop. Discontinue use as soon as this happens. They should be replaced prior to recommencing use of the belt sander. Carbon brushes are a wearing component of the belt sander, and are not covered under warranty. Continuing to use the belt sander when carbon brushes need to be replaced may cause permanent damage to the belt sander. Carbon brushes will wear out after many uses but when the carbon brushes need to be replaced, take the belt sander to a service agent for a quick and low cost replacement. Always replace both carbon brushes at the same time.

Environmental protection



Recycle unwanted materials instead of disposing of them as waste. All tools, hoses and packaging should be sorted, taken to the local recycling centre and disposed of in an environmentally safe way.

Warranty

Your new FERREX® 1010W Belt Sander will more than satisfy your expectations. It has been manufactured under stringent FERREX® Quality Standards to meet superior performance criteria.

You will find your new FERREX® 1010W Belt Sander easy and safe to operate, and, with proper care, it will give you many years of dependable service.

CAUTION. Carefully read through this entire instruction manual before using

your new FERREX® 1010W Belt Sander.

Take special care to heed the Cautions and Warnings.

Your FERREX® 1010W Belt Sander has many features that will make your job faster and easier. Safety, performance, and dependability have been given top priority in the development of this 1010W Belt Sander, making it easy to maintain and operate.

Use only FERREX® replacement parts for your product. Non-conforming parts or modifications made to parts will void your warranty.

What your 3 year warranty means?

Great care has gone into the manufacture of this product and it should therefore provide you with years of good service when used properly. In the event of product failure within its intended use over the course of the first 3 years after the date of purchase, we will remedy the problem as quickly as possible once it has been brought to our attention. In the unlikely event of such an occurrence, or if you require any information about the product please contact us via our after sales support services, details of which can be found in this manual and on the product itself.

After Sales Support TEL: 1300 889 028

Service support

If you have any issues with the operation of your product, please call us 1300 889 028 for advice, or email us at info.aldi@positecgroup.com

Accessories and after sales parts

Accessories and after sales parts are available for purchase by visiting <https://help.tools/> or calling our customer service hotline on: 1300 889 028



1. PBS101.A-SB -
Replacement sanding
belt



2. PBS101.A-DB -
Replacement dust bag



3. PBS101.A-CB -
Replacement carbon
brush set



4. PBS101.A-DBT -
Replacement drive belt

Troubleshooting

Symptom	Possible causes	Solution
Product does not start	1.1 Not connected to power supply 1.2 Product not switched on. 1.3 Power cord or plug is defective 1.4 Other electrical defect to the product	1.1 Connect to power supply 1.2 Press the on/off trigger then lock on button. 1.3 Contact customer service 1.4 Contact customer service
Product does not reach full power	2.1 Extension cord not suitable for operation with the product 2.2 Power source has too low voltage	2.1 Use a proper extension cord 2.2 Connect to another power source
The sanding belt is not in the centre of the base plate during operation	3.1 Fail to adjust the sanding belt with the belt adjustment control. 3.2 Sanding belt deformation due to the long time use.	3.1 Adjust the sanding belt as described in the chapter" Belt adjustment control". 3.2 Replace a new sanding belt.

For further inquiries or issues associated with your 1010W Belt Sander, call our Customer Service on 1300 889 028 or email us at info.aldi@positecgroup.com

Technical specifications

Voltage:	230-240V~50Hz
Power input:	1010 W
No load speed:	120-400 m/min
Belt size:	76*533 mm
Belt surface:	76*170 mm
Product dimensions:	350*160*158 mm
Protection class:	□ /II
Machine weight:	3.55 kg
Product code:	704518

This 1010W Belt Sander complies with the following Standards:

Safety:

AS/NZS 62841.1

AS/NZS 62841.2.4

EMC:

CISPR 14-1



ALDI guarantees that our exclusive brand products are developed to our stringent quality specifications. If you are not entirely satisfied with this product, please return it to your nearest ALDI store, within 60 days from the date of purchase, for a full refund or replacement, or take advantage of our after sales support by calling the supplier's Customer Service Hotline.



Made in China

FERREX® is a registered trademark of ALDI Stores

DISTRIBUTED BY:

ALDI STORES

1 SARGENTS ROAD

MINCHINBURY NSW 2770

www.aldi.com.au

AFTER SALES SUPPORT



1300 889 028 (toll free)

e-mail: info.aldi@positecgroup.com

MODEL: N°. PBS101.A • 02/2022 • 704518

3

YEAR WARRANTY