

WORKZONE[®] TITANIUM+

XFINITY LI-ION 20V **IMPACT WRENCH**

Instruction Manual



***BATTERY NOT INCLUDED**



IMPORTANT:
Read carefully before use
Keep for future reference



CONTENTS

- 1 x Impact Wrench
- 1 x Belt Hook
- 1 x Instruction Manual
- 1 x Warranty Certificate

AFTER SALES SUPPORT



1800 909 909 help@powertoolsupport.com

MODEL: IW36 PRODUCT CODE: 61551 07/2018

5

YEAR WARRANTY

MODEL NUMBER IW36

Version number: 006

Welcome

Congratulations in choosing to buy a Workzone® Titanium 20V Li-Ion Cordless Impact Wrench (battery / charger not included).

All products bought to you by Workzone® Titanium are manufactured to the highest standards of performance and safety and, as part of our philosophy of customer service and satisfaction, are backed by our comprehensive 5 Year Warranty. We hope you will enjoy your purchase for many years to come.

When you open your packaging, first remove all items and check there are no parts damaged or missing. If you find anything wrong, do not operate the product until the parts have been replaced or the fault has been rectified. Failure to do so could result in serious personal injury.

Contents

Welcome	2
Contents	3
Application	4
Pack Content List	4
Parts Description	5
Description of symbols	6
General safety warning	7
Additional safety instructions for Impact Driver/Wrenches	13
Additional Safety rules for chargers and batteries	15
Important information – Product care	16
Assembly / Fitting and removing the Battery Pack from the Impact Wrench and Charger	17
Operation / Inserting and removing sockets	19
Forward/Reverse Switch	19
Using the Trigger Switch	20
Fastening / Removing Screws, Nuts & Bolts	20
Using the LED worklight	21
Operating tips	21
Driving with variable speed	22
Tightening torque	22
Fastening with screws	23
Running nuts and bolts	23
Impact Wrench Safety Features	24
Impact Wrench Overload	24
Temperature cut out	24
Low voltage cut out	25
Maintenance	26
Cleaning	26
Battery Maintenance	26
Warranty	27
Environmental protection	27
What your 5 year warranty means	28
Service Support	28
Accessories & After Sales Parts	28
FAQ/Troubleshooting	29
Technical Specification	30
Warranty Details	32
Repair and Refurbished Goods or Parts Notice	33

IMPACT WRENCH 20V - IW36

1. Application

First time users or inexperienced operators pay particular attention to the operation of the 20V Li-Ion Impact Wrench, including details of starting and stopping and correct use of the 20V Li-Ion Impact Wrench on pages 19-20, as well as the maintenance instructions on pages 26.

Intended use of the 20V Li-Ion Impact Wrench (battery / charger not included)

NOTE: This product is for private domestic DIY use only. It is not suitable for commercial or trade use. This 20V Impact Wrench is used for fastening and removing screws & bolts. Use the tool only for intended applications.

2. Package Content List

- | | |
|---|---|
| 1 x 20V Li-Ion Impact Wrench (battery/charger not included) | • Remove all packing materials |
| 1 x side belt hook (+ assembly screw) | • Ensure all parts on the contents list are present |
| 1 x Instruction manual | • Check the appliance, and all accessories for transportation damages |
| 1 x Warranty Card & Certificate | |



WARNING! Please read and understand this instruction manual before use and keep it for your future reference. Your power tool should only be passed on together with this instruction manual.



WARNING! To reduce risk of injury, only use Xfinity Plus battery packs. Other type of battery packs may burst causing personal injury and damage. The battery pack must be recharged only with an Xfinity Plus battery charger.


3. Parts description


- | | |
|-------------------------------|---|
| 1. ½" Square Drive | 6. Battery Pack (not included; shown only for illustrative and instructional purposes only) |
| 2. Forward / Reverse Selector | 7. 20V Charger (not included; shown only for illustrative and instructional purposes only) |
| 3. Belt Hook | |
| 4. LED Worklight | |
| 5. Trigger Switch | |





4. Description of symbols


The instruction manual, rating plate, or on the product itself, may show these symbols. These represent important information about the product or instructions on its use.


 Caution/Warning:
Read all safety warnings and all instructions.

 Regulatory Compliance Mark. Appliance complies with requirements of electrical approval & EMC in Australia.


 Waste electrical products should not be disposed of with household waste.

 Read the instruction manual.

 Wear eye protection.
Wear ear protectors when impact drilling.
Exposure to noise can cause hearing loss.

 60 Month Warranty Period.

5. General safety warnings

 **WARNING. Read all safety warnings and all instructions.**
Failure to follow the warnings and instructions may result in electric shock, fire and/or serious injury.

Save all warnings and instructions for future reference.

The term “power tool” in the warnings refers to your mains operated (corded) power tool or battery-operated (cordless) power tool.

1. Work area safety

- a. **Keep work area clean and well lit.** Cluttered and dark areas invite accidents.
- b. **Do not operate power tools in explosive atmospheres, such as in the presence of flammable liquids, gases or dust.** Power tools create sparks which may ignite the dust or fumes.
- c. **Keep children and bystanders away while operating a power tool.** Distractions can cause you to lose control.

2. Electrical safety

- a. **Power tool plugs must match the outlet. Never modify the plug in any way. Do not use any adapter plugs with earthed (grounded) power tools.** Unmodified plugs and matching outlets will reduce risk of electric shock.
- b. **Avoid body contact with earthed or grounded surfaces, such as pipes, radiators, ranges and refrigerators.** There is an increased risk of electric shock if your body is earthed or grounded.
- c. **Do not expose power tools to rain or wet conditions.** Water entering a power tool will increase the risk of electric shock.
- d. **Do not abuse the cord. Never use the cord for carrying, pulling or unplugging the power tool. Keep cord away from heat, oil, sharp edges or moving parts.** Damaged or entangled cords increase the risk of electric shock.
- e. **When operating a power tool outdoors, use an extension cord suitable for outdoor use.** Use of a cord suitable for outdoor use reduces the risk of electric shock.

- f. **If operating a power tool in a damp location is unavoidable, use a residual current device (RCD) protected supply.** Use of an RCD reduces the risk of electric shock.
- 3. Personal safety**
- a. **Stay alert, watch what you are doing and use common sense when operating a power tool. Do not use a power tool while you are tired or under the influence of drugs, alcohol or medication.** A moment of inattention while operating power tools may result in serious personal injury.
- b. **Use personal protective equipment. Always wear eye protection.** Protective equipment such as dust masks, non-skid safety shoes, hard hat, or hearing protection used for appropriate conditions will reduce the risk of personal injuries.
- c. **Prevent unintentional starting. Ensure the switch is in the off position before connecting to power source and/or battery pack, picking up or carrying the tool.** Carrying power tools with your finger on the switch or energising power tools that have the switch on invites accidents.
- d. **Remove any adjusting key or wrench before turning the power tool on.** A wrench or a key left attached to a rotating part of the power tool may result in personal injury.
- e. **Do not overreach. Keep proper footing and balance at all times.** This enables better control of the power tool in unexpected situations.
- f. **Dress properly. Do not wear loose clothing or jewellery. Keep your hair, clothing and gloves away from moving parts.** Loose clothes, jewellery or long hair can be caught in moving parts.
- g. **If devices are provided for the connection of dust extraction and collection facilities, ensure these are connected and properly used.** Use of these devices can reduce dust related hazards.
- 4. Power tool use and care**
- a. **Do not force the power tool. Use the correct power tool for your application.** The correct power tool will do the job better and safer at the rate for which it was designed.

- b. **Do not use the power tool if the switch does not turn it on and off.** Any power tool that cannot be controlled with the switch is dangerous and must be repaired.
- c. **Disconnect the plug from the power source and/or the battery pack from the power tool before making any adjustments, changing accessories, or storing power tools.** Such preventive safety measures reduce the risk of starting the power tool accidentally.
- d. **Store idle power tools out of the reach of children and do not allow persons unfamiliar with the power tool or these instructions to operate the power tool.** Power tools are dangerous in the hands of untrained users.
- e. **Maintain power tools. Check for misalignment or binding of moving parts, breakage of parts and any other condition that may affect the power tool's operation. If damaged, have the power tool repaired before use.** Many accidents are caused by poorly maintained power tools.
- f. **Keep cutting tools sharp and clean.** Properly maintained cutting tools with sharp cutting edges are less likely to bind and are easier to control.
- g. **Use the power tool, accessories and tool bits etc. in accordance with these instructions, taking into account the working conditions and the work to be performed.** Use of the power tool for operations different from those intended could result in a hazardous situation.
- 5. Battery tool use and care**
- a) **Recharge only with the charger specified by the manufacturer.** A charger that is suitable for one type of battery pack may create a risk of fire when used with another battery pack.
- b) **Use power tools only with specifically designated battery packs.** Use of any other battery packs may create a risk of injury and fire.
- c) **When battery pack is not in use, keep it away from other metal objects, like paper clips, coins, keys, nails, screws or other small metal objects, that can make a connection from one terminal to another.** Shorting the battery terminals together may cause burns or a fire.

d) **Under abusive conditions, liquid may be ejected from the battery; avoid contact. If contact accidentally occurs, flush with water. If liquid contacts eyes, additionally seek medical help.** Liquid ejected from the battery may cause irritation or burns.

6. Service

a. **Have your power tool serviced by a qualified repair person using only identical replacement parts.** This will ensure that the safety of the power tool is maintained.

7. General safety information for battery-powered drill/drivers.

Drill safety warnings:

Wear ear protectors when impact drilling. Exposure to noise can cause hearing loss.

Use auxiliary handle(s), if supplied with the tool. Loss of control can cause personal injury.

Hold power tool by insulated gripping surfaces, when performing an operation where the cutting accessory may contact hidden wiring. Cutting accessory contacting a "live" wire may make exposed metal parts of the power tool "live" and could give the operator an electric shock.

Hold power tool by insulated gripping surfaces, when performing an operation where the fastener may contact hidden wiring. Fasteners contacting a "live" wire may make exposed metal parts of the power tool "live" and could give the operator an electric shock.

8. Safety notes for battery/charger.

a. **Keep the charger away from rain or damp conditions.** Water entering into the charger will increase the risk of an electrical shock.

b. **Only use chargers recommended by the manufacturer to recharge the battery.** There is a risk of fire if it is used with other batteries.

c. **Never use to recharge third-party batteries.** The charger is only designed to charge the supplied batteries (Li-Ion) using the voltages specified in the Technical Data. Otherwise there is a risk of fire or explosion.

d. **Keep the charger clean.** Contamination will increase the risk of an electrical shock.

e. **Check the charger, cable and plug each time you use the unit.** Do not use the charger if you find any damage. Never open the charger up yourself, have it repaired by a qualified specialist only and with original replacement parts.

A damaged charger, cable or plug will increase the risk of an electrical shock.

f. **Never operate the charger on a surface that will burn easily (for example, paper, textiles etc) or in a flammable environment.** There is a risk of fire occurring as a result of the heat generated during the charging process.

g. **Fluid can escape from the battery when used incorrectly.** Avoid all contact with this. In the event of accidental contact, rinse with water. If liquid should get into the eyes, get medical assistance. Battery fluid may result in skin irritations and burns.

h. **Do not open the battery.** There is a risk of short-circuiting.

i. **Protect the battery from heat, for example, from constant sun and fire.** There is a risk of explosion.

j. **Never short circuit the battery.** There is a risk of explosion.

k. **In the event of damage and incorrect use, vapours may come out of the battery.** Ensure your work space is well ventilated with fresh air and, if you have any symptoms, consult a doctor. These vapours may irritate the respiratory system.

Safety rules for cordless drill/driver

a) **Hold tool by insulated gripping surfaces when performing an operation where the drill/driver bits may contact hidden wiring or its own cord.** Contact with a "live" wire will make exposed metal parts of the tool "live" and shock the operator.

b) **Always wear safety goggles or eye protection when using this tool.** Use a dust mask or respirator for applications which generate dust.

c) **Secure the material being drill/drivered.** Never hold it in your hand or across legs. Unstable support can cause the drill/driver bit to bind causing loss of control and injury.

- d) **Position yourself to avoid being caught between the tool or side handle and walls or posts.** Should the bit become bound or jammed in the work, the reaction torque of the tool could crush your hand or leg.
- e) **If the bit becomes bound in the workpiece, release the trigger immediately, reverse** the direction of rotation and slowly squeeze the trigger to back out the bit. Be ready for a strong reaction torque. The drill/driver body will tend to twist in the opposite direction as the drill/driver bit is rotating.
- f) **Do not grasp the tool or place your hands too close to the spinning chuck or drill/driver bit. Your hand may be lacerated.**
- g) **When installing a drill/driver bit, insert the shank of the bit well within the jaws of the chuck.** If the bit is not inserted deep enough, the grip of the jaws over the bit is reduced and the loss of control is increased.
- h) **Do not use dull or damaged bits and accessories.** Dull or damaged bits have a greater tendency to bind in the workpiece.
- i) **When removing the bit from the tool avoid contact** with skin and use proper protective gloves when grasping the bit or accessory. Accessories may be hot after prolonged use. Check to see that keys and adjusting wrenches are removed from the drill/driver before switching the tool on. Keys or wrenches can fly away at high velocity striking you or a bystander.
- j) **Do not run the drill/driver while carrying it at your side.** A spinning drill/driver bit could become entangled with clothing and injury may result.

WARNING! Some dust created by power sanding, sawing, grinding, drill/driving, and other construction activities contains chemicals known to cause cancer, birth defects or other reproductive harm.

Additional safety instructions for Impact Driver/Wrenches

Wear ear protectors with impact wrenches.

Exposure to noise can cause hearing loss.

Use auxiliary handles if supplied with the tool.

Loss of control can cause personal injury.



WARNING! Some dust created by power sanding, sawing, grinding, drill/driving, and other construction activities contains chemicals known to cause cancer

- If possible, always use clamps or a vice to hold your work.
- Always switch off before you put the Impact Driver/Wrench down.
- Ensure that the lighting is adequate.
- Do not put pressure on the Impact Driver/Wrench, such that it slows the motor down. Allow the wrench bit to cut without pressure. You will get better results and you will be taking better care of your tool.
- Keep the area free of tripping hazards.
- Do not let anyone under 18 years operate this tool.
- Only use accessory bits in good condition.
- Before driving / wrenching, check that there is sufficient clearance for the bit under the workpiece.
- Do not touch the bit after operation. It will be very hot.
- Keep your hands away from under the workpiece.
- Never use your hands to remove sawdust, chips or waste close by the bit.
- Rags, cloths, cord, string and the like should never be left around the work area.
- Support the work properly.
- If you are interrupted when operating the Impact Driver/Wrench, complete the process and switch off before looking up.
- Periodically check that all nuts, bolts and other fixings are properly tightened.

- When using the Impact Driver/Wrench, use safety equipment including safety glasses or shield, ear defenders, and protective clothing including safety gloves. Wear a dust mask if the Impact Driver/Wrench operation creates dust.

If in doubt, do not plug in the tool. Using a power source with a voltage less than the nameplate rating is harmful to the motor.

The tool must be used only for its prescribed purpose. Any use other than those mentioned in this Manual will be considered a case of misuse. The user and not the manufacturer shall be liable for any damage or injury resulting from such cases of misuse.

To use this tool properly, you must observe the safety regulations, the assembly instructions and the operating instructions to be found in this Manual. All persons who use and service the machine have to be acquainted with this Manual and must be informed about its potential hazards.

Children and frail people must not use this tool. Children should be supervised at all times if they are in the area in which the tool is being used. It is also imperative that you observe the accident prevention regulations in force in your area. The same applies for general rules of occupational health and safety.

The manufacturer shall not be liable for any changes made to the tool nor for any damage resulting from such changes.

Even when the tool is used as prescribed it is not possible to eliminate all residual risk factors. The following hazards may arise in connection with the tool's construction and design:

- Damage to the lungs if an effective dust mask is not worn.
- Damage to hearing if effective ear defenders are not worn

Additional safety rules for charger & batteries

- Use only compatible ALDI Xfinity 20V charger and batteries with this Impact Wrench (not supplied).**
- Protect the charger and battery pack against moisture including rain and high humidity.**
- Always check that the power cord is correctly connected before using the charger.**

- When you are not using the charger, remove the plug from the mains socket.** Do not pull the plug out by the power cord.
- Handle the battery pack carefully.** Do not let it fall or be subject to impact.
- Always remove the plug from the power socket before you clean or maintain the charger or battery pack.**
- Do not charge the battery pack if the ambient temperature is less than 0°C or greater than 45°C.**
- Do not short circuit the battery pack.** A short circuit gives rise to a heavy current causing overheating and the possibility of fire or explosion.
- Do not connect a cable to the battery pack terminals.**
- Make sure that no metal objects such as a nail, paper clip or coin finds its way into the charging socket.**
- A damaged battery pack or one which no longer holds its charge must be disposed of in a special way and not placed for normal household rubbish collection.**
- Never throw a battery pack into a fire or into water.**
- Keep handles dry, clean and free from oil and grease. Slippery handles do not allow for safe handling and control of the tool in unexpected situations.**

NOTE: This unit may not be used by people (including children) with reduced physical, sensory or mental capacities, with a lack of experience and without the appropriate knowledge, unless they are supervised by someone who is responsible for their safety or have been instructed by such a person with regard to how the unit is to be operated.

Children should be supervised to ensure that they do not play with the device.



Wear eye protection.

Wear ear protectors when impact drilling.

Exposure to noise can cause hearing loss.

Important information – Product care

NOTE: Xfinity Battery and Charger not included. For any issues related directly to your purchased ALDI Xfinity Battery / charger, contact the Customer Service of the manufacturer as listed on the battery / charger packaging, manual or on the label on the battery / charger.

This Impact Wrench uses Lithium Ion Battery Cells. Care **MUST** be taken to ensure both the safety and life of the pack is maintained. Ensure you have read all of the safety notes in the previous pages before using the Impact Wrench.

Treat the battery pack with care and within the guidelines of this manual and the supplied manual included with the purchase of ALDI Xfinity Battery/s.

If the battery pack does become immersed in water or any fluids, or is subject to a severe drop or it does not operate within the guidelines of this manual or the supplied manual included with the purchase of ALDI Xfinity Battery/s. immediately **STOP** using the battery pack and have it checked. During operation avoid overloading the Impact Wrench. If the Impact Wrench is overloaded it will automatically **STOP**. Overloading may occur for a number of reasons including when the Impact Wrench is pushed too hard or when using an Impact Wrench bit or attachment greater than what is specified. If you do overload the drill/driver during operation refer to the “Overload” section in this manual.

NOTE: When the battery of the Impact Wrench is at the lower end of the charge, the Impact Wrench is more susceptible to the overload condition. Running the Impact Wrench at close to maximum load, or continual resetting of the overload will cause the battery pack to overheat. When a preset cell temperature is detected, the battery pack will automatically **STOP** operating and will not restart until the battery pack has cooled to a safe level.

In this condition, **DO NOT** force cool the pack by placing in a freezer or similar device. Refer to the “Overload” section in this manual.

Another feature of the Impact Wrench is the low voltage cut out feature. This feature operates when the voltage drops below a preset value. When this occurs the tool will automatically stop operating. To correct the situation you need to either insert another charged battery into the Impact Wrench or recharge the existing battery, and then proceed with the Impact Wrench application.

NOTE: Attempting to restart the tool in this condition without either recharging the battery or installing a battery with charge will lead to Impact Wrench restarting and then stopping again after only a few seconds of operation.

These safety devices have been fitted for the safety, reliability and life of the tool.

Assembly

Fitting and removing the Battery Pack from the Impact Wrench and Charger.

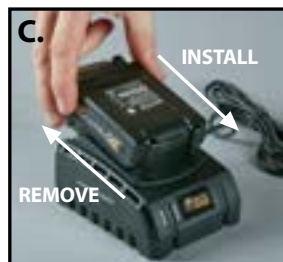
NOTE: (Xfinity Battery pack and charger is not included with this product; it is shown only for illustrative and instructional purposes only)

1. To install your purchased Xfinity battery pack (6) on to the impact wrench, align the grooved guide rails of the battery pack (6) with the raised guide rails on the bottom of the impact wrench. With your thumb on the battery release tab on the battery pack, slide it firmly into the handle until the battery is secure in position (Fig A). Release your thumb from the battery release tab. When the battery is secured you will hear it engage with a snap / click.
2. To remove the battery pack (6) from the impact wrench, press the battery pack release button and slide the battery pack (6) completely out and away from the impact wrench (Fig B).
3. When applying the battery pack (6) onto your purchased Xfinity charger (7), align the grooved guide rails of the battery pack (6) with the raised guide rails on the charger (7) (Fig C). The charger (7) will make a snap / click noise when it is securely aligned.



- To remove the battery pack (6) from the charger (7), press the battery release button on the battery pack (6) and slide away from the charger in the reverse direction it was installed into the charger (7) (Fig C).

NOTE: For any issues related directly to your purchased ALDI Xfinity Battery / charger, contact the Customer Service of the manufacturer as listed on the battery / charger packaging, manual or on the label on the battery / charger.



Fitting the Belt Hook

NOTE: Ensure the battery is not installed or the drill operational when fitting the belt hook.

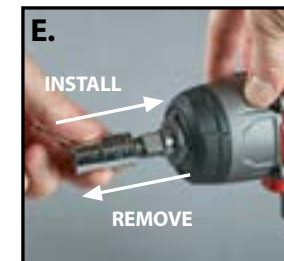
- Align the ridge on the back of belt hook (3) into the groove on the side of the Impact wrench. Insert the assembly screw through the belt hook screw hole and using a Philips head screwdriver, tighten the screw by turning in a clockwise direction (Fig D).



Operation

Inserting and removing Sockets

- Align an appropriate 1/2" socket with the 1/2" square drive (1)
- Push the socket on to the square drive shaft until it clicks into place.
- To remove the socket from the square drive shaft, simply pull it away from the square drive shaft (Fig E).



Forward/Reverse Switch

NOTE: You can only change the direction of rotation of the impact wrench using the forward/reverse selector (2) when the trigger switch (5) is NOT depressed.

This selector will allow you to change the direction of the motor while the trigger switch (5) is not depressed.

- To put in reverse mode, push in the forward/reverse selector (2) on the side of the drill where the arrow on the switch is pointing to the rear end of the drill. The chuck will rotate in an anti-clockwise direction (Fig F).
The reverse mode is intended for the removal of screws and bolts.
- To put in forward mode, push in the forward/reverse selector (2) on the side of the drill where the arrow on the switch is pointing to the front end of the drill. The chuck will rotate in a clockwise direction (Fig G).
The forward mode is for fastening screws and bolts.



Using the Trigger switch

This trigger switch (5) is an electronic variable speed control which enables the user to vary the speed continuously.

1. After selecting the direction of rotation using the forward/reverse selector (2) and installing the socket required for the work task at hand, pressing on the trigger switch (5) will then activate the impact wrench for use (Fig H).
2. The speed varies according to how far the trigger switch (5) is depressed. The further it is depressed the faster the socket will rotate; the lighter it is depressed, the slower it will rotate.



Fastening / Removing Screws, Nuts & Bolts

NOTE: When tightening a nut or a bolt always start the fastener by hand by 2 or 3 threads BEFORE using the impact wrench.

NOTE: The longer the impact wrench is operated in the hammer function, the tighter the fastener will become. 1 –2 seconds is normally sufficient with small nuts, and bolts even less time.

1. Select the appropriate forward or reverse function using the selector (2).
2. Insert the socket onto the ½" square drive shaft (1).
3. Ensure your work piece (if applicable) is secured in position to stop it moving whilst fastening or removing screws or bolts.
4. Hold the socket firmly against the bolt or screw to ensure it does not slip (Fig I).
5. Slowly increase the pressure on the trigger switch (5) until you reach the appropriate torque required for the fastening or removal of the screw or bolt.



NOTE: Do not over tighten. Studs can break, threads stripped or threads stretched where fasteners are over tightened.

NOTE: Always check the nut or bolt after tightening with the impact wrench, the fastener is secure by a manual operation. i.e using a spanner or wheel brace

IMPORTANT: If the impact wrench is used to secure and tighten wheel nuts, ensure the nuts are manually checked with a hand brace after using the brace.

Using the LED worklight

1. When the unit is switched (the trigger switch (5) is depressed) , the LED work light (4) also comes on to ensure better vision and to make working in dark areas more safe (Fig I).

The working light goes out when the trigger switch (5) is released.

CAUTION! LED is laser class 1!

Do not look directly into the laser as this may result in damage to the eyes.



Operating tips

You will extend the life of your sockets/bits and do neater work if you always put the socket/bits in contact with the work before pulling the trigger switch (5). During the operation, hold the Impact Wrench firmly and exert light, steady pressure. Too much pressure at low speed will stall the Impact Wrench . Too little pressure will allow the driver socket/bit to disengage from the fastener and damage the fastener head and driver bit.

Always use a good quality driver bit which matches the screw head correctly. When using a flat driver bit ensure a correct fit between the fastener and bit and it is recommended to use a bit with a sleeved guide.

Driving with variable speed

The technique is to start slowly, increasing the speed as the screw runs down. Set the screw snugly by slowing to a stop, or allowing the impacts to set the screw to the desired torque over a period of impact time. Prior to driving screws, pilot and clearance holes should be drilled. Always hold the machine straight on the bolt to be tightened.

The best method to determine the right impacting/tightening duration is by means of a trial. For small screws, the right impacting/tightening duration can be reached in less than 0.5 Sec. Therefore, work with low RPM and switch the machine off immediately when the screw is tight and the impacting sound can be heard.

For screwing larger, longer wood screws into hard material, pre-drilling is the best method.

Tightening torque

The tightening torque depends on the duration of the impacting/tightening action. The largest tightening torque is achieved after approx. 6 to 10 Sec. impacting/tightening action. Over tightening or the use of poor quality fasteners can result in the fastener shearing.

The torque build-up depends on the following factors:

- Hardness of the bolts/nuts.
- Type of washer (disk washer, spring washer, seal).
- Hardness of the material to be joined.
- Lubricating effect at the surfaces of the junction.

This leads to the following application cases:

Hard case: The joining of metal to metal with a disk washer. The maximum torque is reached after a relatively short impacting/tightening action.

Medium case: The joining of metal to metal where spring ring washer, disk spring washer, stud bolts or bolts/nuts with conical seats are used.

Soft case: The joining of e.g. metal to wood or insulation material.

For middle or soft joining cases, the maximum tightening torque is less as for hard cases. Therefore, a longer impacting/tightening action is necessary to arrive at the maximum tightening torque.

Fastening with screws

This procedure will enable you to fasten materials together with your tool without stripping, splitting or separating the material.

1. Clamp the pieces together and drill the first hole 2/3 the diameter of the screw. If the material is soft, drill only 2/3 the proper length. If it is hard, drill the entire length.
2. Unclamp the pieces and drill the second hole the same diameter as the screw shank in the first or top piece of wood.
3. If flat head screw is used, countersink the hole to make the screw flush with the surface. Then, simply apply even pressure when driving the screw. The screw shank clearance hole in the first piece allows the screw head to pull the pieces tightly together.

Running nuts and bolts

NOTE: When tightening a nut or a bolt always start the fastener by hand by 2 or 3 threads BEFORE using the impact wrench.

NOTE: The longer the impact wrench is operated in the hammer function, the tighter the fastener will become. 1 –2 seconds is normally sufficient with small nuts, and bolts even less time.

Variable speed control must be used with caution for driving nuts and bolts with socket set attachments. The technique is to start slowly, increasing speed as the nut or bolt runs down. Set the nut or bolt snugly by allowing the impacts to tighten the fastener over a period of time. ie the longer the impacts, the tighter the fastener.

NOTE: Hold the impact driver firmly.

NOTE: When tightening a nut or a bolt always start the fastener by hand by 2 or 3 threads BEFORE using the impact wrench.

NOTE: The longer the impact wrench is operated in the hammer function, the tighter the fastener will become. 1 –2 seconds is normally sufficient with small nuts, and bolts even less time.

Impact Wrench Safety Features

Impact Wrench Overload

This Impact Wrench is fitted with an overload protection. If the Impact Wrench is excessively forced, or the task being performed is too great for the Impact Wrench, the Impact Wrench will automatically go into an overload mode. When the Impact Wrench goes into overload, the Impact Wrench will automatically and suddenly STOP. To reset the overload, simply release the trigger switch (5). When the trigger is pressed again, the Impact Wrench will restart. Resume work after the overload has been reset, but reduce the load by using a smaller Impact Wrench bit or

CAUTION: Do not continue to overload the Impact Wrench and constantly reset the overload. Doing this will cause the battery cells to over heat.

Temperature cut out

If the Impact Wrench is constantly overloaded, or the Impact Wrench is used constantly at maximum rating in high ambient conditions, the battery cells may overheat causing the battery pack to shut down.

When this occurs you will need to allow the battery cells to cool.

NOTE: The Impact Wrench will not restart until the battery pack has cooled.

To reduce the temperature of the cells remove the battery pack from the Impact Wrench and place the battery pack in a free air environment, out of direct sunlight or any other heat source.

DO NOT force cool the pack in any way. Do not place in refrigerators or freezers.

When the battery pack has cooled down it can again be used to operate the Impact Wrench, as long as the load or the conditions causing the original excessive temperature has been corrected.

Low voltage cut out

This Impact Wrench is fitted with a low voltage cut out feature.

The low voltage cut out feature operates when the voltage drops below a preset value. This feature automatically stops the Impact Wrench from operating (similar to that of the overload condition). When this condition occurs you will need to either insert another battery into the Impact Wrench or recharge the existing battery.

The low voltage cut out feature has been added to maximise the life of the battery cells. When this occurs, recharge the battery pack (6) by following the battery charging section in this manual or the supplied manual from your ALDI Xfinity purchased charger.

NOTE: Attempting to restart the Impact Wrench without either recharging the battery or installing another battery (with charge) will lead to Impact Wrench restarting and then stopping again, after only a few seconds of operation.

NOTE: For any issues related directly to your purchased ALDI Xfinity Battery / charger, contact the Customer Service of the manufacturer as listed on the battery / charger packaging, manual or on the label on the battery / charger.

Maintenance

Cleaning

Clean the case only with a damp cloth. DO NOT use solvents when cleaning plastic parts. Plastics are susceptible to damage from various types of commercial solvents and may be damaged by their use. Use a clean cloth to remove dirt, dust, oil, grease etc, then dry well.

Battery Maintenance

To maintain battery capacity, always refer to the specific instructions in the supplied manual included with the purchase of ALDI Xfinity Batteries. It is recommended to recharge your battery every two months. Store only fully charged batteries. They should therefore be recharged from time to time. The place of storage must be dry.

CAUTION! Electrical and battery operated units that no longer work should not be disposed of in the household waste! They are to be collected separately, in accordance with your local waste disposal regulations.

ATTENTION! Batteries must be removed from battery powered tools and disposed of separately in accordance with relevant waste battery regulations.

Batteries must never be disposed of with domestic waste!

Please discard power tools no longer usable at a local collection point. Collection and disposal of packaging materials separately by types complying with local rules and regulations. For details, please contact your local council.

Warranty

Your new WORKZONE[®] TITANIUM 20V Lithium-Ion Impact Wrench will more than satisfy your expectations.

It has been manufactured under stringent WORKZONE[®] TITANIUM Quality Standards to meet superior performance criteria.

You will find your new 20V Lithium-Ion Impact Wrench easy and safe to operate, and, with proper care, it will give you many years of dependable service.

CAUTION. Carefully read through this entire instruction manual before using your new WORKZONE[®] TITANIUM 20V Lithium-Ion Impact Wrench.

Take special care to heed the Cautions and Warnings.

Your WORKZONE[®] TITANIUM 20V Lithium-Ion Impact Wrench has many features that will make your job faster and easier. Safety, performance, and dependability have been given top priority in the development of this 20V Lithium-Ion Impact Wrench, making it easy to maintain and operate.

Use only WORKZONE[®] TITANIUM replacement parts for your product.

Non-conforming parts or modifications made to parts will void your warranty.

Environmental protection



Recycle unwanted materials instead of disposing of them as waste. All tools, hoses and packaging should be sorted, taken to the local recycling centre and disposed of in an environmentally safe way.

What your 5 year warranty means

Great care has gone into the manufacture of this product and it should therefore provide you with years of good service when used properly.

In the event of product failure within its intended use over the course of the first 5 years after the date of purchase, we will remedy the problem as quickly as possible once it has been brought to our attention. In the unlikely event of such an occurrence, or if you require any information about the product please contact us via our after sales support services, details of which can be found in this manual and on the product itself.

After Sales Support TEL: 1800 909 909

Service Support

If you have any issues with the operation of your product, please call us on 1800 909 909 for advice, or email us at help@powertoolsupport.com

Accessories and After Sales Parts

The following is available for purchase by visiting <https://help.tools/> or calling our customer service hotline on: 1800 909 909



1. 61551-BH: Belt Hook
+ Assembly screw

FAQ/Troubleshooting

Do I need to charge the battery before use*?

Yes, Some new battery packs are shipped in a low charge condition and must be fully charged before use. Ensure you follow the charging instructions supplied for both the ALDI Xfinity Battery and Charger purchased for operation of this Impact Wrench

How do I obtain the best life for the battery*?

Follow the charging instructions supplied for both the ALDI Xfinity Battery and Charger purchased for operation of this Impact Wrench, however, it is generally recommended:

- Never allow the battery to run completely empty before recharging. The battery should be placed on charge whenever the battery is noticeably running down or the impact wrench no longer performs a task it previously performed.
- Avoid allowing loose items like screws or nails etc. to be stored with battery packs as these or similar items can short battery packs and cause a fire or explosion.
- Always unplug the charger when not in use and store in a dry secure place.
- Avoid charging or storing your battery in high temperatures and ensure the storage area is dry.

What is the function of the Forward / Reverse selector ?

This selector (2) will allow you to change the direction of the motor while the trigger switch is not depressed. Drill/driving uses the forward mode. The reverse mode is intended for the removal of screws and assisting to remove jammed drill/driver bits.

How do I adjust the torque?

The level of torque is dependent upon how much pressure is applied to the trigger switch (5). The further the trigger switch is depressed the faster the socket will rotate and the lighter it is depressed, the slower it will rotate.

Controlling the torque allows for better control when using the impact wrench in specific screwing tasks and assists in preventing over-fastening and over-tightening.

* Battery and Charger not included with this product

For further inquiries or issues associated with your Impact Wrench, call our Customer Service on 1800 909 909 or email us at help@powertoolsupport.com

Technical Specifications

Voltage:	20V
No Load Speed:	0-2000/min
Impact Rate:	0-3000BPM
Max. Torque:	350Nm
Chuck:	½" Square Drive
Weight:	1.8kg (without battery)
Product Dimensions (without battery) (L x W x H) cm :	22.5 x 7 x 20

This 20V Li-Ion Impact Wrench complies with the following Standards:

Safety:	IEC60745
	EN60745
	+ Australian Variation Report
EMC:	EN55014-1:2006+A1+A2



The Xfinity battery System has more than 20 tools that work with the same battery platform, giving you the ultimate versatility in tool selection to get your job finished.

With LITHIUM powered batteries, you can get more done in less time and improve the performance of every Xfinity powered Workzone® or Gardenline® tool ever made.

Watch out for more Xfinity tools coming soon.



**ONE
BATTERY POWERS OVER
15 TOOLS**



Impact Wrench 20V

Warranty Details

REGISTER YOUR PURCHASE AT www.aldi.com.au/en/about-aldi/product-registration/ TO KEEP UP-TO-DATE WITH IMPORTANT PRODUCT INFORMATION

The product is guaranteed to be free from defects in workmanship and parts for a period of 60 months from the date of purchase. Defects that occur within this warranty period, under normal use and care, will be repaired, replaced or refunded at our discretion. The benefits conferred by this warranty are in addition to all rights and remedies in respect of the product that the consumer has under the Competition and Consumer Act 2010 and similar state and territory laws.

Our goods come with guarantees that cannot be excluded under the Australian Consumer Law. You are entitled to a replacement or refund for a major failure and for compensation for any other reasonably foreseeable loss or damage. You are also entitled to have the goods repaired or replaced if the goods fail to be of acceptable quality and the failure does not amount to a major failure.



AFTER SALES SUPPORT

AUS 1800 909 909 (toll free)

32

e-mail: help@powertoolsupport.com

MODEL No.: IW36 • 61551 • 07/2018

Impact Wrench 20V

Repair and Refurbished Goods or Parts Notice

Unfortunately, from time to time, faulty products are manufactured which need to be returned to the Supplier for repair.

Please be aware that if your product is capable of retaining user-generated data (such as files stored on a computer hard drive, telephone numbers stored on a mobile telephone, songs stored on a portable media player, games saved on a games console or files stored on a USB memory stick) during the process of repair, some or all of your stored data may be lost.

We recommend you save this data elsewhere prior to sending the product for repair.

You should also be aware that rather than repairing goods, we may replace them with refurbished goods of the same type or use refurbished parts in the repair process.

Please be assured though, refurbished parts or replacements are only used where they meet ALDI's stringent quality specifications.

If at any time you feel your repair is being handled unsatisfactorily, you may escalate your complaint.

Please call us on 1800 909 909, or email us at help@powertoolsupport.com

Toolklub Pty. Ltd, 8 Ashenden Street, Leongatha, VIC, 3953

Toolklub Help Desk 1800 909 909 (Operating Hours: Mon-Fri 08:30AM to 06:00PM EST)

EMAIL: help@powertoolsupport.com

INTERNET: <https://help.tools/>



AFTER SALES SUPPORT

AUS 1800 909 909 (toll free)

33

e-mail: help@powertoolsupport.com

MODEL No.: IW36 • 61551 • 07/2018



WORKZONE[®]

TITANIUM+

ALDI guarantees that our exclusive brand products are developed to our stringent quality specifications. If you are not entirely satisfied with this product, please return it to your nearest ALDI store within 60 days from the date of purchase for a full refund or replacement, or take advantage of our after sales support by calling the supplier's Customer Service Hotline.

WORKZONE[®] TITANIUM is a registered trademark of ALDI Stores



Made in China

WORKZONE[®] TITANIUM is a registered trademark of ALDI Stores

DISTRIBUTED BY:

ALDI STORES

1 SARGENTS ROAD, MINCHINBURY NSW 2770

www.aldi.com.au

CONTENTS

- 1 x Impact Wrench
- 1 x Belt Hook
- 1 x Instruction Manual
- 1 x Warranty Certificate

AFTER SALES SUPPORT



AUS 1800 909 909



help@powertoolsupport.com

MODEL: IW36

PRODUCT CODE: 61551

07/2018

5

YEAR WARRANTY