

WORK ZONE[®] TITANIUM+

XFINITY LI-ION 20V CORDLESS BRAD NAILER / STAPLER Instruction Manual



***BATTERY
NOT INCLUDED**



IMPORTANT:
Read carefully before use
Keep for future reference



Original Instructions



CONTENTS

- 1 x Brad Nailer/Stapler
- 1 x Belt Hook
- 200 x 32mm Staples
- 200 x 40mm Nails
- 1 x 3mm Hex Key
- 1 x Instruction Manual
- 1 x Warranty Card

AFTER SALES SUPPORT



☎ 1800 909 909 📧 help@powertoolsupport.com

MODEL: DBAF50/40 PRODUCT CODE: 61420 07/2018

5

YEAR WARRANTY

MODEL NUMBER DBAF50/40

Version number: 12/2018

Year of manufacturing: 2018

Welcome

Congratulations in choosing to buy a Workzone® Titanium 20V Li-Ion Cordless Brad Nailer / Stapler (Battery and Charger not included).

All products bought to you by Workzone® Titanium are manufactured to the highest standards of performance and safety and, as part of our philosophy of customer service and satisfaction, are backed by our comprehensive 5 Year Warranty. We hope you will enjoy your purchase for many years to come.

When you open your packaging, first remove all items and check there are no parts damaged or missing. If you find anything wrong, do not operate the product until the parts have been replaced or the fault has been rectified. Failure to do so could result in serious personal injury.

Contents

Welcome	2
Contents	3
Application	4
Pack Content List	4
Parts Description	5
Description of symbols	6
General Power Tool Safety Warnings	7
Safety Rules for Nailers / Staplers	11
Important information – Product care	16
Assembly / Fitting and removing the Battery from the Brad Nailer / Stapler and Charger	17
Belt Hook	18
Preparation - Loading Nails and Staples into the Brad Nailer / Stapler	19
A. Loading Staples	19
B. Loading Nails	20
Depth Adjustment Wheel	21
Operation - Checking the LED Battery and function indicator	22
Setting the Single or Contact Firing Function	23
A. Single Firing	23
B. Contact Firing	24
Using the LED Worklight/s while using the Brad Nailer / Stapler	24
Removing jammed Nails / Staples	25
Overload Protection	26
Maintenance - Magazine Maintenance	26
Cleaning	26
Transport	26
Battery Maintenance	26
Warranty	27
Environmental protection	27
What your 5 year warranty means	28
Service Support	28
Accessories & After Sales Parts	28
FAQ/Troubleshooting	29
Technical Specification	30
Warranty Details	32
Repair and Refurbished Goods or Parts Notice	33

BRAD NAILER / STAPLER 20V - DBAF50/40

1. Application

First time users or inexperienced operators pay particular attention to the operation of the 20V Li-Ion Brad Nailer / Stapler, including details of starting and stopping and correct use of the 20V Li-Ion Brad Nailer / Stapler on pages 22-24, as well as the maintenance instructions on pages 26.

Intended use of the 20V Li-Ion Brad Nailer / Stapler (battery / charger not included)

NOTE: This product is for private domestic DIY use only.

It is not suitable for commercial or trade use.

This 20V Brad Nailer / Stapler is used for such applications including: Finishes and trims (Interior and exterior), Door and window casings and trims, door jambs, flooring, baseboard paneling, & DIY cabinetry. Use the tool only for intended applications.

2. Package Content List

- 1 x Brad Nailer / Stapler
- 1 x Belt Hook
- 200 x 32mm Staples
- 200 x 40mm Nails
- 1 x 3mm Hex Key
- 1 x Instruction Manual
- 1 x Warranty Card

- Remove all packing materials
- Ensure all parts on the contents list are present
- Check the appliance, and all accessories for transportation damages



WARNING! Please read and understand this instruction manual before use and keep it for your future reference. Your power tool should only be passed on together with this instruction manual.



WARNING! To reduce risk of injury, only use Xfinity Plus battery packs. Other type of battery packs may burst causing personal injury and damage. The battery pack must be recharged only with an Xfinity Plus battery charger.

AFTER SALES SUPPORT

1800 909 909 (toll free)

4 e-mail: help@powertoolsupport.com
MODEL No.: DBAF50/40 • 61420 • 07/2018

3. Parts description

1. Safety striker pin
2. Workpiece contact (nail/staple release)
3. Depth adjustment wheel
4. Cylinder (internal)
5. Soft grip handle
6. Trigger switch
7. LED worklight switch
8. Belt hook
9. Single/contact firing slider knob
10. LED Battery and function indicator
11. Magazine
12. Indicator window
13. LED Worklight (both sides)
14. Magazine release latch
15. 200 x 32mm Staples
16. 200 x 40mm Nails
17. Battery (*not included; shown only for illustrative and instructional purposes only*)
18. Charger (*not included; shown only for illustrative and instructional purposes only*)
19. 3mm Hex Key



AFTER SALES SUPPORT

1800 909 909 (toll free)

5 e-mail: help@powertoolsupport.com
MODEL No.: DBAF50/40 • 61420 • 07/2018

4. Description of symbols

The instruction manual, rating plate, or on the product itself, may show these symbols. These represent important information about the product or instructions on its use.



Caution/Warning:
Read all safety warnings and all instructions.



Regulatory Compliance Mark. Appliance complies with requirements of electrical approval & EMC in Australia.



Waste electrical products should not be disposed of with household waste.



Read the instruction manual.



Wear eye protection.
Wear ear protectors.
Exposure to noise can cause hearing loss.



60 Month Warranty Period.



SINGLE FIRING: Push the single / contact firing switch to the LEFT side



CONTACT FIRING: Push the single / contact firing switch to the RIGHT side



LED Red Flashing = Jam



LED Red = Low battery



LED Green Flashing = Overheat



LED Green = NO nails / staples



Decrease depth



Increase depth

5. General Power Tool Safety Warnings



WARNING. Read all safety warnings and all instructions.

Failure to follow the warnings and instructions may result in electric shock, fire and/or serious injury.

Save all warnings and instructions for future reference.

The term “power tool” in the warnings refers to your mains-operated (corded) power tool or battery-operated (cordless) power tool.

1. Work area safety

- a. **Keep work area clean and well lit.** Cluttered and dark areas invite accidents.
- b. **Do not operate power tools in explosive atmospheres, such as in the presence of flammable liquids, gases or dust.** Power tools create sparks which may ignite the dust or fumes.
- c. **Keep children and bystanders away while operating a power tool.** Distractions can cause you to lose control.

2. Electrical safety

- a. **Power tool plugs must match the outlet. Never modify the plug in any way. Do not use any adapter plugs with earthed (grounded) power tools.** Unmodified plugs and matching outlets will reduce risk of electric shock.
- b. **Avoid body contact with earthed or grounded surfaces, such as pipes, radiators, ranges and refrigerators.** There is an increased risk of electric shock if your body is earthed or grounded.
- c. **Do not expose power tools to rain or wet conditions.** Water entering a power tool will increase the risk of electric shock.

3. Personal safety

- a. **Stay alert, watch what you are doing and use common sense when operating a power tool. Do not use a power tool while you are tired or under the influence of drugs, alcohol or medication.** A moment of inattention while operating power tools may result in serious personal injury.
- b. **Use personal protective equipment. Always wear eye protection.** Protective equipment such as dust masks, non-skid safety shoes, hard hat, or hearing protection used for appropriate conditions will reduce the risk of personal injuries.
- c. **Prevent unintentional starting. Ensure the switch is in the off position before connecting to power source and/or battery pack, picking up or carrying the tool.** Carrying power tools with your finger on the switch or energising power tools that have the switch on invites accidents.
- d. **Remove any adjusting key or wrench before turning the power tool on.** A wrench or a key left attached to a rotating part of the power tool may result in personal injury.
- e. **Do not overreach. Keep proper footing and balance at all times.** This enables better control of the power tool in unexpected situations.
- f. **Dress properly. Do not wear loose clothing or jewellery. Keep your hair, clothing and gloves away from moving parts.** Loose clothes, jewellery or long hair can be caught in moving parts.
- g. **If devices are provided for the connection of dust extraction and collection facilities, ensure these are connected and properly used.** Use of these devices can reduce dust related hazards.

4. Power tool use and care

- a. **Do not force the power tool. Use the correct power tool for your application.** The correct power tool will do the job better and safer at the rate for which it was designed.
- b. **Do not use the power tool if the switch does not turn it on and off.** Any power tool that cannot be controlled with the switch is dangerous and must be repaired.

- c. **Disconnect the plug from the power source and/or the battery pack from the power tool before making any adjustments, changing accessories, or storing power tools.** Such preventive safety measures reduce the risk of starting the power tool accidentally.
- d. **Store idle power tools out of the reach of children and do not allow persons unfamiliar with the power tool or these instructions to operate the power tool.** Power tools are dangerous in the hands of untrained users.
- e. **Maintain power tools. Check for misalignment or binding of moving parts, breakage of parts and any other condition that may affect the power tool's operation. If damaged, have the power tool repaired before use.** Many accidents are caused by poorly maintained power tools.
- f. **Use the power tool, accessories and tool bits etc. in accordance with these instructions, taking into account the working conditions and the work to be performed.** Use of the power tool for operations different from those intended could result in a hazardous situation.

5. Battery tool use and care

- a) **Recharge only with the charger specified by the manufacturer.** A charger that is suitable for one type of battery pack may create a risk of fire when used with another battery pack.
- b) **Use power tools only with specifically designated battery packs.** Use of any other battery packs may create a risk of injury and fire.
- c) **When battery pack is not in use, keep it away from other metal objects, like paper clips, coins, keys, nails, screws or other small metal objects, that can make a connection from one terminal to another.** Shorting the battery terminals together may cause burns or a fire.
- d) **Under abusive conditions, liquid may be ejected from the battery; avoid contact. If contact accidentally occurs, flush with water. If liquid contacts eyes, additionally seek medical help.** Liquid ejected from the battery may cause irritation or burns.

6. Service

- a. Have your power tool serviced by a qualified repair person using only identical replacement parts.** This will ensure that the safety of the power tool is maintained.

7. Safety notes for battery/charger.

- a. Keep the charger away from rain or damp conditions.** Water entering into the charger will increase the risk of an electrical shock.
- b. Only use chargers recommended by the manufacturer to recharge the battery.** There is a risk of fire if it is used with other batteries.
- c. Never use to recharge third-party batteries.** The charger is only designed to charge the supplied batteries (Li-Ion) using the voltages specified in the Technical Data. Otherwise there is a risk of fire or explosion.
- d. Keep the charger clean.** Contamination will increase the risk of an electrical shock.
- e. Check the charger, cable and plug each time you use the unit.** Do not use the charger if you find any damage. Never open the charger up yourself, have it repaired by a qualified specialist only and with original replacement parts.
A damaged charger, cable or plug will increase the risk of an electrical shock.
- f. Never operate the charger on a surface that will burn easily (for example, paper, textiles etc) or in a flammable environment.** There is a risk of fire occurring as a result of the heat generated during the charging process.
- g. Fluid can escape from the battery when used incorrectly.** Avoid all contact with this. In the event of accidental contact, rinse with water. If liquid should get into the eyes, get medical assistance. Battery fluid may result in skin irritations and burns.
- h. Do not open the battery.** There is a risk of short-circuiting.
- i. Protect the battery from heat, for example, from constant sun and fire.** There is a risk of explosion.
- j. Never short circuit the battery.** There is a risk of explosion.

- k. In the event of damage and incorrect use, vapours may come out of the battery.** Ensure your work space is well ventilated with fresh air and, if you have any symptoms, consult a doctor. These vapours may irritate the respiratory system.

Safety Rules for Nailers / Staplers

- Always assume that the tool contains nails or staples. Careless handling of the nailer can result in unexpected firing of nails or staples and personal injury.
- Do not point the tool towards yourself or anyone nearby. Unexpected triggering will discharge the nail or staple causing an injury.
- Do not actuate the tool unless the tool is placed firmly against the workpiece. If the tool is not in contact with the workpiece, the nail or staple may be deflected away from your target.
- Disconnect the tool from the power source when the fastener jams in the tool. While removing a jammed fastener, the tacker may be accidentally activated if it is plugged in.
- Use caution while removing a jammed nail or staple. The mechanism may be under compression and the nail or staple may be forcefully discharged while attempting to free a jammed condition.
- Do not use this nailer for fastening electrical cables. It is not designed for electric cable installation and may damage the insulation of electric cables thereby causing electric shock or fire hazards.
- Hold power tool by insulated gripping surfaces, when performing an operation where the nail or staple may contact hidden wiring. Nails or staples contacting a "live" wire may make exposed metal parts of the power tool "live" and could give the operator an electric shock.
- Know your power tool. Read operator's manual carefully. Learn its applications and limitations, as well as the specific potential hazards related to this power tool. Following this rule will reduce the risk of electric shock, fire, or serious injury.
- Always wear eye protection with side shields marked to comply with ANSI Z87.1. Everyday glasses have only impact resistant lenses. They are not safety glasses. Following this rule will reduce the risk of serious personal injury.

- Eye protection which conforms to ANSI specifications and provides protection against flying particles both from the front and side should always be worn by the operator and others in the work area when loading, operating or servicing this tool. Eye protection is required to guard against flying fasteners and debris, which could cause severe eye injury.
- The user must ensure that proper eye protection is worn. We recommend Wide Vision Safety Mask for use over eyeglasses or standard safety glasses that provide protection against flying particles both from the front and side. Always use eye protection which is marked to comply with ANSI Z87.1.
- Additional safety protection will be required in some environments. For example, the working area may include exposure to noise level which can lead to hearing damage. The user must ensure that any necessary hearing protection is used by the operator and others in the work area. Some environments will require the use of head protection equipment.
- Keep fingers away from trigger when not driving fasteners to avoid accidental firing.
- Use safety equipment. Always wear eye protection. Dust mask, nonskid safety shoes, hard hat, or hearing protection must be used for appropriate conditions.
- Protect your lungs. Wear a face or dust mask if the operation is dusty. Following this rule will reduce the risk of serious personal injury.
- Protect your hearing. Wear hearing protection during extended periods of operation. Following this rule will reduce the risk of serious personal injury.
- Battery tools do not have to be plugged into an electrical outlet; therefore, they are always in operating condition. Be aware of possible hazards when not using your battery tool or when changing accessories. Following this rule will reduce the risk of electric shock, fire, or serious personal injury.
- Do not place battery tools or their batteries near fire or heat. This will reduce the risk of explosion and injury.
- Use the tool only for its intended use. Do not discharge fasteners into open air.
- Use the tool only for the purpose for which it was designed.
- Use only the nails or staples recommended for this tool. Use of the wrong nails or staples could result in poor nail or staple feeding, jammed nails

- or staples, and nails or staples leaving the tool at erratic angles. If nails or staples are not feeding smoothly and properly, discontinue their use immediately. Jammed and improperly feeding nails or staples could result in serious personal injury.
- Never use this tool in a manner that could cause a nails or staples to be directed toward anything other than the workpiece.
- Do not use the tool as a hammer.
- Always carry the tool by the handle.
- Do not alter or modify this tool from the original design or function without approval from the manufacturer.
- Always be aware that misuse and improper handling of this tool can cause injury to yourself and others.
- Never clamp or tape the trigger or workpiece contact in an actuated position.
- Never leave tool unattended if the battery is installed.
- Do not operate this tool if it does not contain a legible warning label.
- Keep the tool and its handle dry, clean and free from oil and grease. Always use a clean cloth when cleaning. Never use brake fluids, gasoline, petroleum-based products, or any strong solvents to clean your tool. Following this rule will reduce the risk of loss of control and deterioration of the enclosure plastic.

OPERATION

- Do not use tool if trigger does not actuate properly. Any tool that cannot be controlled with the trigger is dangerous and must be repaired.
- Check operation of the workpiece contact mechanism frequently. Do not use the tool if the workpiece contact mechanism is not working correctly as accidental driving of a nail or staple may result. Do not interfere with the proper operation of the workpiece contact mechanism.
- Do not use a tool that does not work correctly.
- Always assume that the tool contains nails/ staples.
- Do not carry the tool from place to place holding the trigger. Accidental discharge could result.
- Always handle the tool with care:

- Respect the tool as a working implement.
- Never engage in horseplay.
- Never pull the trigger unless nose is directed toward the work.
- Keep others a safe distance from the tool while tool is in operation as accidental actuation may occur, possibly causing injury.
- The tool is designed for single-hand use. Do not hold the tool by the front of the magazine. Do not put hands, head, or other parts of your body near the bottom of the magazine where the nail or staple exits the tool, as serious personal injury could be caused.
- Do not point the tool toward yourself or anyone whether it contains nails or staples or not.
- Do not actuate the tool unless you intend to drive a nail or staple into the workpiece.
- Always ensure that the workpiece contact is fully positioned above the workpiece. Positioning the workpiece contact only partially above the workpiece could cause the nail or staple to miss the workpiece completely and result in serious personal injury.
- Do not drive nails or staples near edge of material. The workpiece may split causing the nail or staple to ricochet, injuring you or others. Be aware that the nail may follow the grain of the wood, causing it to protrude unexpectedly from the side of the work material or deflect, possibly causing injury.
- Keep hands and body parts clear of immediate work area. Hold workpiece with clamps when necessary to keep hands and body out of potential harm. Be sure the workpiece is properly secured before pressing the fastener against the material. The workpiece contact may cause the work material to shift unexpectedly.
- Keep face and body parts away from back of the tool cap when working in restricted areas. Sudden recoil can result in impact to the body, especially when nailing into hard or dense material.
- During normal use the tool will recoil immediately after driving a fastener. This is a normal function of the tool. Do not attempt to prevent the recoil by holding the tool against the work. Restriction to the recoil can result in a second fastener being driven from the tool. Grip the handle firmly,

- let the tool do the work and do not place second hand on top of tool or near exhaust at any time. Failure to heed this warning can result in serious personal injury.
- Do not drive fasteners on top of other fasteners or with the tool at an overly steep angle as this may cause deflection of fasteners which could cause injury.

LOADING TOOL

- Do not load the tool with fasteners when any one of the operating controls is activated.

When loading tool:

- Never place a hand or any part of body in fastener discharge area of tool.
- Never point tool at anyone.
- Do not pull the trigger or depress the workpiece contact as accidental actuation may occur, possibly causing injury.

SAVE THESE INSTRUCTIONS

- Refer to them frequently and use them to instruct others who may use this tool. If you loan someone this tool, loan them these instructions also.

Important information – Product care

NOTE: Xfinity Battery and Charger not included. For any issues related directly to your purchased ALDI Xfinity Battery / charger, contact the Customer Service of the manufacturer as listed on the battery / charger packaging, manual or on the label on the battery / charger.

This Brad Nailer / Stapler uses Lithium Ion Battery Cells. Care **MUST** be taken to ensure both the safety and life of the pack is maintained. Ensure you have read all of the safety notes in the previous pages before using the Brad Nailer / Stapler.

Treat the battery pack with care and within the guidelines of this manual and the supplied manual included with the purchase of ALDI Xfinity Battery/s.

If the battery pack does become immersed in water or any fluids, or is subject to a severe drop or it does not operate within the guidelines of this manual or the supplied manual included with the purchase of ALDI Xfinity Battery/s, immediately **STOP** using the battery pack and have it checked. During operation avoid overloading the Brad Nailer / Stapler. If the Brad Nailer / Stapler is overloaded it will automatically **STOP**. Overloading may occur for a number of reasons including when the Brad Nailer / Stapler is pushed too hard or when using a Nail / Staple greater than what is specified, or there is a nail / staple jam. If you do overload the Brad Nailer / Stapler during operation refer to the “Overload Protection” section in this manual.

NOTE: When the battery of the Brad Nailer / Stapler is at the lower end of the charge, the Brad Nailer / Stapler is more susceptible to the overload condition. Running the Brad Nailer / Stapler at close to maximum load, or continual resetting of the overload will cause the battery pack to overheat. When a preset cell temperature is detected, the battery pack will automatically **STOP** operating and will not restart until the battery pack has cooled to a safe level.

In this condition, **DO NOT** force the cooling down of the pack by placing in a freezer or similar device. Refer to the “Overload Protection” section in this manual.

Another feature of the Brad Nailer / Stapler is the low voltage cut out feature. This feature operates when the voltage drops below a preset value. When this occurs the tool will automatically stop operating. To correct the situation you need to either insert another charged battery into the Brad Nailer / Stapler or recharge the existing battery, and then proceed with the Brad Nailer / Stapler application.

NOTE: Attempting to restart the tool in this condition without either recharging the battery or installing a battery with charge will lead to Brad Nailer / Stapler restarting and then stopping again after only a few seconds of operation.

These safety devices have been fitted for the safety, reliability and life of the tool.

AFTER SALES SUPPORT

(AUS) 1800 909 909 (toll free)

16 e-mail: help@powertoolsupport.com

MODEL No.: DBAF50/40 • 61420 • 07/2018

Assembly

Fitting and removing the Battery from the Brad Nailer / Stapler and Charger.

NOTE: (Xfinity Battery pack and charger is not included with this product; it is shown only for illustrative and instructional purposes only)

1. To install your purchased Xfinity battery (17) on to the Brad Nailer / Stapler, align the grooved guide rails of the battery (17) with the raised guide rails on the bottom of the Brad Nailer / Stapler. With your thumb on the battery release tab on the battery pack, slide it firmly into the handle until the battery is secure in position (Fig A). Release your thumb from the battery release tab. When the battery is secured you will hear it engage with a snap / click.
2. To remove the battery (17) from the Brad Nailer / Stapler, press the battery pack release button and slide the battery (17) completely out and away from the Brad Nailer / Stapler (Fig B).
3. When applying the battery (17) onto your purchased Xfinity charger (18), align the grooved guide rails of the battery (17) with the raised guide rails on the charger (18) (Fig C). The charger (18) will make a snap / click noise when it is securely aligned.



AFTER SALES SUPPORT

(AUS) 1800 909 909 (toll free)

17 e-mail: help@powertoolsupport.com

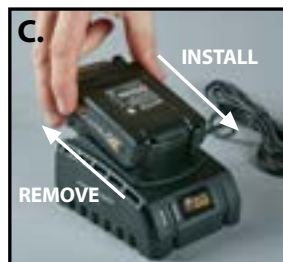
MODEL No.: DBAF50/40 • 61420 • 07/2018

4. To remove the battery (17) from the charger (18), press the battery release button on the battery (17) and slide away from the charger in the reverse direction it was installed into the charger (18) (Fig C).

NOTE: For any issues related directly to your purchased ALDI Xfinity Battery / charger, contact the Customer Service of the manufacturer as listed on the battery / charger packaging, manual or on the label on the battery / charger.

Belt Hook

Your Brad Nailer / Stapler comes with a belt hook which is already assembled onto the product. No assembly is required (Fig D).



Preparation

Loading Nails and Staples into the Brad Nailer / Stapler

WARNING: Keep the tool pointed away from yourself and others when loading nails or staples. Failure to do so could result in possible serious personal injury.

WARNING: Ensure to remove battery pack from the tool during nail / staple loading.

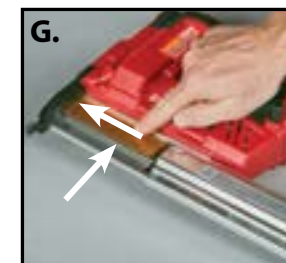
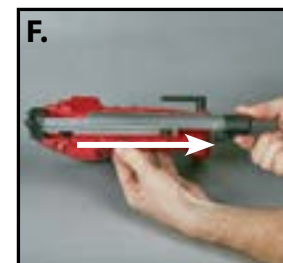
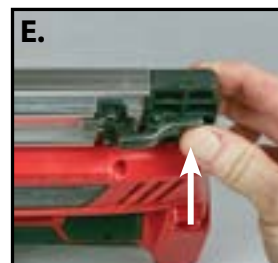
NOTE: If the staple or nail cartridge is not loaded correctly, the magazine will not secure, and the magazine release latch (14) will not re-engage.

WARNING: Do not install nails and staples together.

A. Loading Staples

NOTE: Do not install staples of different sizes at the same time. Only 1 x cartridge of the same size staples should be installed at each use. Loading various staple sizes at one time will cause malfunction and void your warranty.

1. Press on the magazine release latch (14), to open the magazine (11) (Fig E), ensuring you extend it out as far as it will release (Fig F).
2. **To load staples**, insert the cartridge of staples with the crown of the staples to the top rear of the open magazine with the staple feet facing away (Fig G).



Ensure the end of the staple cartridge engages inside the guide rails at the end of the magazine (Fig H).

3. Push the magazine (11) closed by pushing it up towards the safety striker pin (1) end of the magazine until it closes securely (Fig I). The magazine release latch (14) will engage and a “click” will be heard when secure (Fig J).



B. Loading Nails

NOTE: Do not install nails of different sizes at the same time. Only 1 x cartridge of the same size nail should be installed at each use. Loading various nail sizes at one time will cause malfunction and void your warranty.

1. Press on the magazine release latch (14), to open the magazine (11) (Fig E), ensuring you extend it out as far as it will release (Fig F).
2. **To load nails**, insert the cartridge of nails with the heads of the nails facing to the top rear of the open magazine with the nail points facing away (Fig K). Ensure the end of the nail cartridge engages inside the guide rails at the end of the magazine (Fig H).
3. Push the magazine (11) closed by pushing it up towards the safety striker pin (1) end of the magazine until it closes securely (Fig I). The magazine release latch (14) will engage and a “click” will be heard when secure (Fig J).

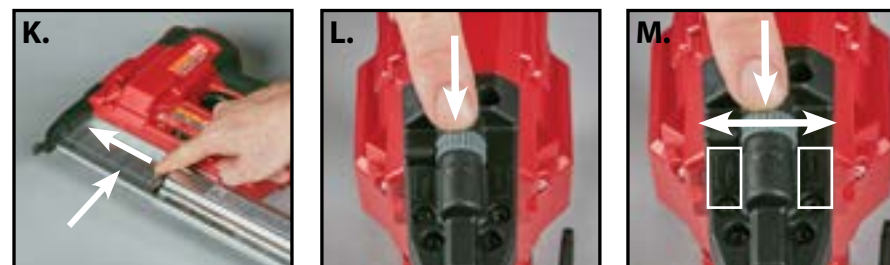
Depth Adjustment Wheel

WARNING: Keep the tool pointed away from yourself and others when setting the depth adjustment. Failure to do so could result in possible serious personal injury.

WARNING: Ensure to remove battery pack from the tool during initial depth adjustment setting.

The depth adjustment wheel (3) (Fig L) is used for setting the depth of the nail or the staple from the workpiece contact (nail/staple release) (2). On each side of the depth adjustment wheel (3) is a symbol indicating whether turning the wheel in that direction will increase or decrease the nail / staple depth (Fig M). The range of the depth adjustment wheel (3) is approx. 3mm.

1. When viewing the depth adjustment wheel (3) per Fig M, turning the depth adjustment wheel (3) to the left will increase the depth of the nail / staple into the contact surface. If pushing all the way to the left, the nail will be flush on the contact surface.
2. Turning the depth adjustment wheel (3) to the right will decrease the depth of the nail / staple into the contact surface.
3. It is recommended to test the depth of adjustment doing a few test shots, and then adjusting the wheel accordingly to reach the desired depth required for the contact surface. Proceed to the next page for Operation to start your product and check the adjustment.



Operation

Checking the LED Battery and function indicator



WARNING: Always keep the tool pointed away from yourself and others when in use. Failure to do so could result in possible serious personal injury.

1. After installing the nail / staple cartridge into the magazine, install your purchased fully charged Xfinity battery onto the brad nailer/ stapler per instructions on pages 19/20.
2. Check there are no lights lit up on the LED battery and function indicator (10). If you have loaded the nails or staples correctly, and the battery is fully charged, no lights will be on.
3. If the LED battery and function indicator (10) is flashing red this indicates there is a jam in the magazine (Fig N). Refer to page 25 for fixing jams.
4. If the LED battery and function indicator (10) is red, this indicates the battery is low on charge (Fig O). Charge your purchased Xfinity battery.
5. If the LED battery and function indicator (10) is flashing green (Fig P), this indicates the brad nailer / stapler has overheated. Refer to page 26 for further instruction.
6. If the LED Battery and function indicator (10) is green (Fig Q), there are no nails/ staples installed. Refer to pages 19/20 for installing nails / staples.



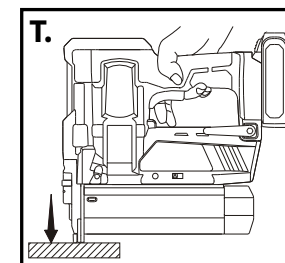
Setting the Single or Contact Firing Function

1. To set the firing function to single shots, slide the single/contact firing slider knob (9) to the left (Fig R). Single firing is suitable for precise single nail / staple placement.
2. To set the firing function to multiple contact shots, slide the single/contact firing slider knob (9) to the right (Fig S). Continual contact firing is good for quick and multiple nail / staple firing.

A. Single Firing

1. Once the single/contact firing slider knob (9) is set to single firing, depress the safety striker pin flush on the contact surface (Fig T), and then press the trigger switch (6) to fire a single nail or staple (Fig U).
2. Release the trigger switch (6), and lift the brad nailer / stapler away from the contact surface, hence also releasing the safety striker pin (1).
3. Repeat the process for single firing of individual nails or staples.

NOTE: The safety striker pin (1) MUST be depressed at the same time as pressing the trigger switch (6), otherwise the Brad nailer / stapler will not fire / function.



B. Contact Firing

1. Once the single/contact firing slider knob (9) is set to contact firing, depress the trigger switch (6) (Fig U), and then depress the safety striker pin flush on the contact surface to fire a single nail / staple (Fig T).
2. Keeping your finger pressed on the trigger switch (6), lift the Brad nailer / stapler away from the contact surface, hence also releasing the safety striker pin (1), and place in the next position for the next nail or staple to be fired, again depressing the safety striker pin flush onto the contact surface. The Brad nailer / stapler will automatically fire another staple or nail again (Fig V).
3. Repeat the process keeping your finger pressed on the trigger switch (6), to continually fire each nail/staple.

NOTE: The safety striker pin (1) **MUST** be depressed at the same time as continually pressing the trigger switch (6), otherwise the Brad nailer / stapler will not fire / function.

WARNING: Do not keep the trigger switch (6) depressed when the tool is not in use to prevent accidental firing.

Using the LED Worklight/s while using the Brad Nailer / Stapler

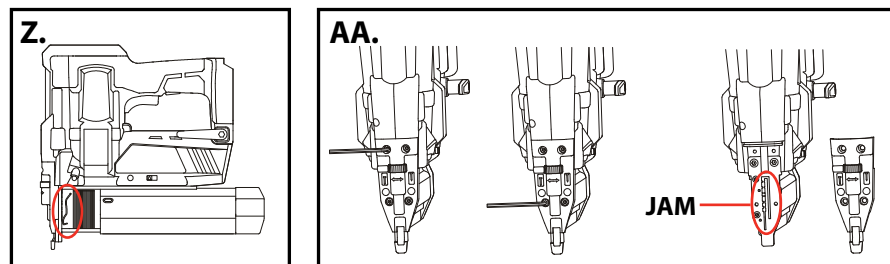
CAUTION! LED is laser class 1! Do not look directly into the laser as this may result in damage to the eyes.

1. To turn on the LED worklights while on the Brad nailer / stapler, press on the LED worklight switch (7) before pressing on the trigger switch (6) (Fig W/X).



Removing jammed Nails / Staples

1. If the LED battery and function indicator (10) is flashing red (Fig N) this indicates a jam in the magazine.
2. Remove the battery from the Brad nailer / stapler.
3. Open the magazine by pressing on the magazine release latch (14) (Fig Y), and remove the nail or staple cartridge and the jammed nail or staple (Fig Z).
4. Re-install nails or staples, re-install battery, and check the jam is corrected. If corrected, the red light will be no longer flashing on the LED battery and function indicator (10).
5. If the jam is still not corrected it means a nail or staple may be jammed in the internal striking mechanism.
6. Remove the battery from the Brad nailer / stapler, then using the supplied 3mm hex key (19), remove the 4 x hex screws located in front of the depth adjustment wheel and remove the nosepiece. Remove the jammed nail / staple; this may require using pliers (Fig AA).
7. When the jam is removed, reattach the nose piece and resecure the 4 x hex screws using the supplied 3mm hex key (19). Re-install nails or staples, re-install battery, and check the jam is corrected. If corrected, the red light will be no longer flashing on the LED battery and function indicator (10).



Overload Protection

If the LED battery and function indicator (10) is flashing green, the Brad nailer / stapler has overloaded / overheated possibly from extended use. Remove the battery immediately and allow the unit to sit for 30 minutes – 1 hour.

When the Brad nailer / stapler has cooled, re-install the battery and check the LED battery and function indicator (10) is no longer flashing green. If it is no longer showing green, continue to use the Brad nailer / stapler.

If the Brad nailer / stapler continues to result in an overload / overheated condition, DO NOT continue to use and make contact with customer service by calling 1800 909 909 or emailing help@powertoolsupport.com for service advice.

Maintenance

Magazine Maintenance

 **WARNING: Ensure to remove battery pack from the tool during cleaning and maintenance.**

Ensure that no debris or dust enter the open magazine as this may cause jamming or malfunction. Clean the inside of the magazine with a fine brush or clean cloth. An air sprayer may also assist with removing any accumulated dust or debris.

Cleaning

Avoid using solvents when cleaning plastic parts. Most plastics are susceptible to damage from various types of commercial solvents and may be damaged by their use. Use clean cloths to remove dirt, dust, oil, grease, etc.

Transport

When transporting the nailer / stapler, it is recommended to remove the battery from the unit, remove any nails or staple cartridges in the unit to avoid any potential misfiring, and store in a secure case or the packaging box during transport.

Battery Maintenance

To maintain battery capacity, always refer to the specific instructions in the supplied manual included with the purchase of ALDI Xfinity Batteries. It is recommended to recharge your battery every two months. Store only fully charged batteries. They should therefore be recharged from time to time. The place of storage must be dry.

CAUTION! Electrical and battery operated units that no longer work should not be disposed of in the household waste! They are to be collected separately, in accordance with your local waste disposal regulations.

ATTENTION! Batteries must be removed from battery powered tools and disposed of separately in accordance with relevant waste battery regulations.

Batteries must never be disposed of with domestic waste!

Please discard power tools no longer usable at a local collection point.

Collection and disposal of packaging materials separately by types complying with local rules and regulations. For details, please contact your local council.

Warranty

Your new WORKZONE® TITANIUM 20V Lithium-Ion Brad Nailer / Stapler will more than satisfy your expectations.

It has been manufactured under stringent WORKZONE® TITANIUM Quality Standards to meet superior performance criteria.

You will find your new 20V Lithium-Ion Brad Nailer / Stapler easy and safe to operate, and, with proper care, it will give you many years of dependable service.

CAUTION. Carefully read through this entire instruction manual before using your new WORKZONE® TITANIUM 20V Lithium-Ion Brad Nailer / Stapler.

Take special care to heed the Cautions and Warnings.

Your WORKZONE® TITANIUM 20V Lithium-Ion Brad Nailer / Stapler has many features that will make your job faster and easier. Safety, performance, and dependability have been given top priority in the development of this 20V Lithium-Ion Brad Nailer / Stapler, making it easy to maintain and operate.

Use only WORKZONE® TITANIUM replacement parts for your product.

Non-conforming parts or modifications made to parts will void your warranty.

Environmental protection



Recycle unwanted materials instead of disposing of them as waste. All tools, hoses and packaging should be sorted, taken to the local recycling centre and disposed of in an environmentally safe way.

What your 5 year warranty means

Great care has gone into the manufacture of this product and it should therefore provide you with years of good service when used properly.

In the event of product failure within its intended use over the course of the first 5 years after the date of purchase, we will remedy the problem as quickly as possible once it has been brought to our attention. In the unlikely event of such an occurrence, or if you require any information about the product please contact us via our after sales support services, details of which can be found in this manual and on the product itself.

After Sales Support TEL: 1800 909 909

Service Support

If you have any issues with the operation of your product, please call us on 1800 909 909 for advice, or email us at help@powertoolsupport.com

Accessories and After Sales Parts

The following is available for purchase by visiting <https://help.tools/> or calling our customer service hotline on: 1800 909 909



1. Various staple size cartridges



2. Various nail size cartridges

Replacement nails and staples for use with the Brad Nailer / Stapler can be purchased at most local hardware stores under various different brands. Ensure the specification of the Nails / Staple does not exceed the maximum capacity of this product (Max nail length / type: 50mm, 18 gauge brad nail and Max staple length / type: 40mm, 18 gauge light duty staple).

FAQ/Troubleshooting

Problem	Possible Cause	Solution
Safety Striker Pin (1) does not depress fully and unit not operating.	Low on staples or nails. Safety Striker Pin (1) is jammed.	Re-install nails / staples into magazine. Remove battery and clean any debris from the magazine or around the safety striker pin (1).
Brad nailer / stapler operates properly but nails / staples not firing in full depth.	Nail / staple is too long for the contact surface. Depth adjustment wheel (3) not set properly	Use appropriate size nail / staples. Adjust the depth adjustment wheel (3) to an increased driving depth.
Brad nailer / stapler operates properly but nails / staples firing too deep.	Depth adjustment wheel (3) not set properly.	Adjust the depth adjustment wheel (3) to an decreased driving depth.
Brad nailer / stapler jams frequently.	Nails / staples are incorrect size. Nails / staples are damaged. Magazine is loose or dirty.	Check nail / staple size. Replace the nail/s / staple/s. Secure magazine.
Brad nailer / stapler stops and LED light is flashing red	Nail / staple is jammed.	Clean magazine. Refer to page 25 for fixing jams.
Brad nailer / stapler stops and LED light is red (but not flashing).	Battery low on charge.	Charge battery.
Brad nailer / stapler stops and LED light is flashing green.	Brad nailer / stapler has over-heated / overloaded.	Refer to page 26 for treating overload condition.
Brad nailer / stapler stops and LED light is green (but not flashing)	No nails / staples loaded.	Install nails / staples

* Battery and Charger not included with this product

For further inquiries or issues associated with your Brad Nailer / Stapler, call our Customer Service on 1800 909 909 or email us at help@powertoolsupport.com

Technical Specifications

Voltage:	20V d.c.
Firing speed:	60 nails/staples per minute
Magazine capacity:	100 (nails or staples)
Led worklight:	Yes
Max nail length / type:	50mm, 18 gauge brad nail
Max staple length / type:	40mm, 18 gauge light duty staple
Depth Adjustment wheel range:	0-3mm
Not included:	Battery and charger
Weight:	2.65kg

Product Dimensions

(without battery) (L x W x H) cm : 26.7 x 25.2 x 9.6cm

This 20V Li-Ion Brad Nailer / Stapler complies with the following Standards:

Safety:	EN 60745-1:2009/A11:2010
	EN 60745-2-16:2010
	AfPS GS 2014:01 PAK
	AS/NZS 60745.1:2009
	AS/NZS 60745.2.16:2009
EMC:	EN 55014-1:2006/A2:2011
	EN 55014-2:1997/A2:2008



The Xfinity battery System has more than 20 tools that work with the same battery platform, giving you the ultimate versatility in tool selection to get your job finished.

With LITHIUM powered batteries, you can get more done in less time and improve the performance of every Xfinity powered Workzone® or Gardenline® tool ever made.

Watch out for more Xfinity tools coming soon.



**ONE
BATTERY POWERS OVER
15 TOOLS**



Brad Nailer / Stapler 20V

Warranty Details

REGISTER YOUR PURCHASE AT www.aldi.com.au/en/about-aldi/product-registration/ TO KEEP UP-TO-DATE WITH IMPORTANT PRODUCT INFORMATION

The product is guaranteed to be free from defects in workmanship and parts for a period of 60 months from the date of purchase. Defects that occur within this warranty period, under normal use and care, will be repaired, replaced or refunded at our discretion. The benefits conferred by this warranty are in addition to all rights and remedies in respect of the product that the consumer has under the Competition and Consumer Act 2010 and similar state and territory laws.

Our goods come with guarantees that cannot be excluded under the Australian Consumer Law. You are entitled to a replacement or refund for a major failure and for compensation for any other reasonably foreseeable loss or damage. You are also entitled to have the goods repaired or replaced if the goods fail to be of acceptable quality and the failure does not amount to a major failure.



AFTER SALES SUPPORT

AUS 1800 909 909 (toll free)

32 e-mail: help@powertoolsupport.com

MODEL No.: DBAF50/40 • 61420 • 07/2018

Brad Nailer / Stapler 20V

Repair and Refurbished Goods or Parts Notice

Unfortunately, from time to time, faulty products are manufactured which need to be returned to the Supplier for repair.

Please be aware that if your product is capable of retaining user-generated data (such as files stored on a computer hard drive, telephone numbers stored on a mobile telephone, songs stored on a portable media player, games saved on a games console or files stored on a USB memory stick) during the process of repair, some or all of your stored data may be lost.

We recommend you save this data elsewhere prior to sending the product for repair.

You should also be aware that rather than repairing goods, we may replace them with refurbished goods of the same type or use refurbished parts in the repair process.

Please be assured though, refurbished parts or replacements are only used where they meet ALDI's stringent quality specifications.

If at any time you feel your repair is being handled unsatisfactorily, you may escalate your complaint.

Please call us on 1800 909 909, or email us at help@powertoolsupport.com

Toolklub Pty. Ltd, 8 Ashenden Street, Leongatha, VIC, 3953

Toolklub Help Desk 1800 909 909 (Operating Hours: Mon-Fri 08:30AM to 06:00PM EST)

EMAIL: help@powertoolsupport.com

INTERNET: <https://help.tools/>



AFTER SALES SUPPORT

AUS 1800 909 909 (toll free)

33 e-mail: help@powertoolsupport.com

MODEL No.: DBAF50/40 • 61420 • 07/2018



WORKZONE[®] TITANIUM+

ALDI guarantees that our exclusive brand products are developed to our stringent quality specifications. If you are not entirely satisfied with this product, please return it to your nearest ALDI store within 60 days from the date of purchase for a full refund or replacement, or take advantage of our after sales support by calling the supplier's Customer Service Hotline.

WORKZONE[®] TITANIUM is a registered trademark of ALDI Stores



Made in China

WORKZONE[®] TITANIUM is a registered trademark of ALDI Stores

DISTRIBUTED BY:

ALDI STORES

1 SARGENTS ROAD, MINCHINBURY NSW 2770

www.aldi.com.au

CONTENTS

1 x Brad Nailer / Stapler
1 x Belt Hook
200 x 32mm Staples
200 x 40mm Nails
1 x 3mm Hex Key
1 x Instruction Manual
1 x Warranty Card

AFTER SALES SUPPORT



AUS

1800 909 909



help@powertoolsupport.com

MODEL: DBAF50/40 PRODUCT CODE: 61420 07/2018

5

YEAR WARRANTY