

**Jacket Length**

A) For Prince Charlie Jackets measure length from the nape of the neck to waist, just above top of hips  
 B) For Argyll and Craill Jackets, measure from the nape of the neck to the base of the spine, just above the seat.

**C) Chest**

Measure loosely around chest at under arm height while wearing a shirt/vest (no jacket), with arms by the sides. Do not inflate chest.

**D) Waist**

Measure around waist above hip bone while wearing a shirt/vest (no jacket).

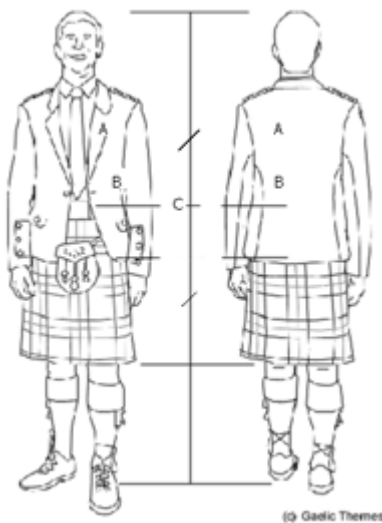
**E) Half Back**

Measure from centre back, centre seam on a well fitting jacket, at 6" below the bottom of the collar to shoulder seam, arms by sides.

**F) Sleeve Length**

Measure from shoulder seam to cuff, if sleeve is desired to be long or short add/remove 1/2" to standard length. Standard length shows up to 1" of shirt cuff.

**Help with Measuring Kilts**



**A) Waist Measurement**

Measure around waist at navel height. Take measurement firmly, so that kilt may sit comfortably without falling down.

**B) Seat Measurement**

Measure loosely around seat at widest point.

**C) Kilt Length/Full Height**

Kneel down with your chin up and knees 2-3" apart. Measure from navel to the floor. This should result in the kilt resting on the tops of the knees. Full height also required without shoes on.