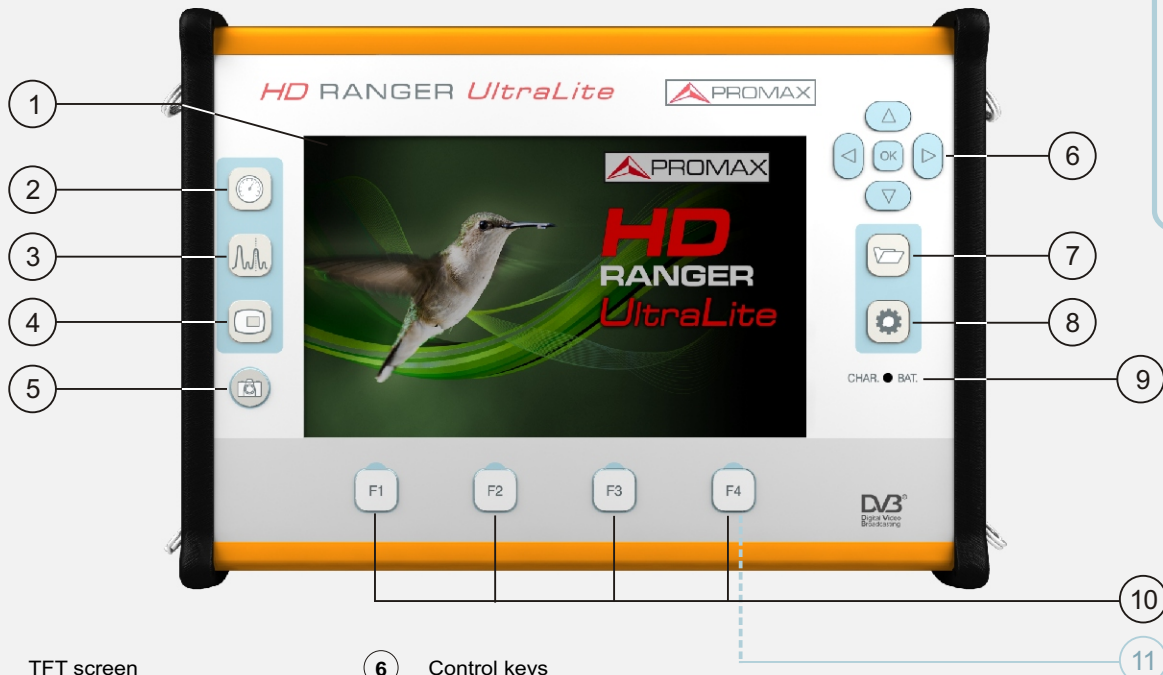


## FRONT VIEW



- |   |                                |
|---|--------------------------------|
| ① TFT screen                                | ⑥ Control keys                 |
| ② Measurement key                           | ⑦ Installations management key |
| ③ Spectrum key                              | ⑧ Settings key                 |
| ④ TV Key                                    | ⑨ Battery charging indicator   |
| ⑤ Export (press>1s)<br>Reference (press<1s) | ⑩ Softkeys                     |
|   | ⑪ Reset (press and hold 5s)    |

## SCREEN ICONS REFERENCE

### STATUS BAR

- Battery charging**
- Battery not charging.** Yellow level indicates charge left
- USB** in serial port mode
- Satellite band**
- Current voltage, 22 kHz signal and LNB power level
- Terrestrial band**
- USB flash drive** inserted
- Current installation**
- Compressed installation**
- SatCR** (SCD/EN50494) commands enabled
- JESS** (SCD2/EN50607) commands enabled
- Task scheduled
- Control keys** multi-function enabled  
Two-letter code indicates the exact function:
  - FR** Frequency tuning
  - CH** Channel tuning
  - SP** SPAN change
  - MK** Marker moving
  - EC** Echo change/zoom

### SERVICE LIST SELECTOR

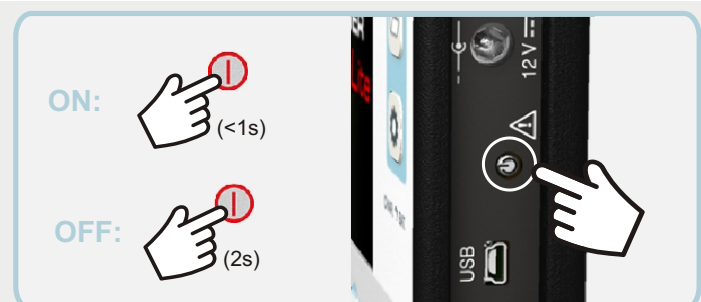
- Digital TV service**
- HD High Definition TV service**
- Digital radio**
- Data**
- Scrambled service**

### DIALOG BOXES

- Error message**
- OK message**
- Question message**
- Warning message**

### VIDEO & AUDIO SETTINGS MENU

- TFT backlight brightness
- Volume



## MEASUREMENT

1/3  
FULL MEASUREMENT

2/3  
MEASUREMENT + TV + SPECTRUM

3/3  
MEASUREMENT + PARAMETERS

## SPECTRUM ANALYSER

1/3  
SPECTRUM + MEASUREMENT

2/3  
SPECTRUM + MEASUREMENT + TV

3/3  
FULL SPECTRUM

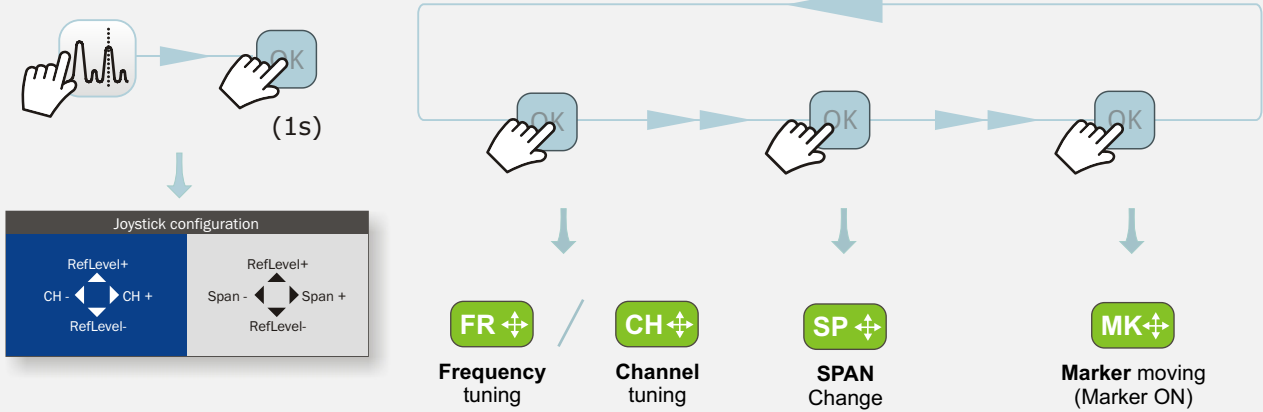
## TV MODE

1/3  
FULL TV

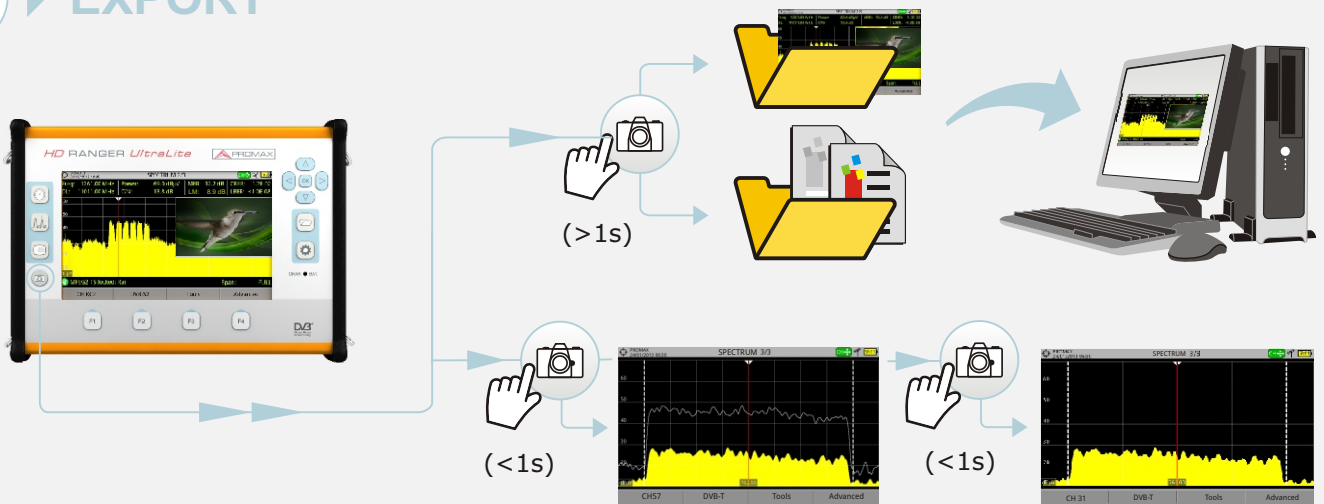
2/3  
TV + SPECTRUM + MEASUREMENT

3/3  
TV + SERVICE DATA

## CONTROL KEYS

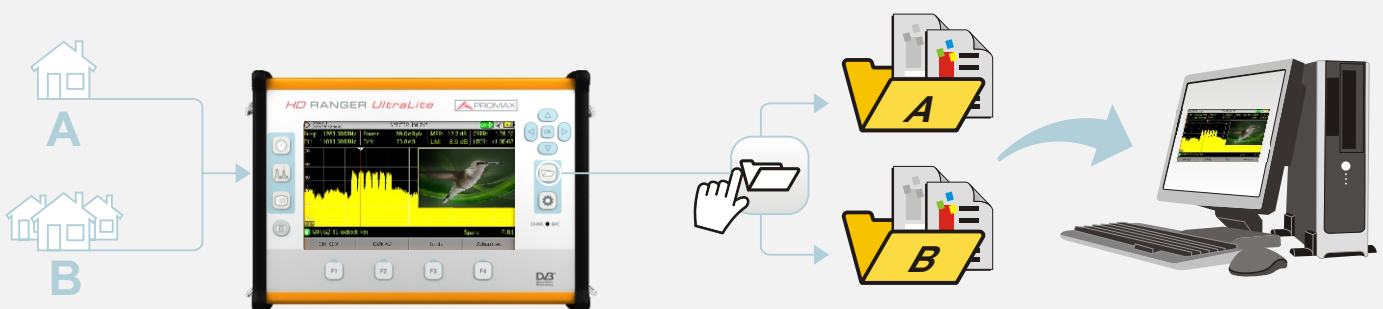


## EXPORT\*

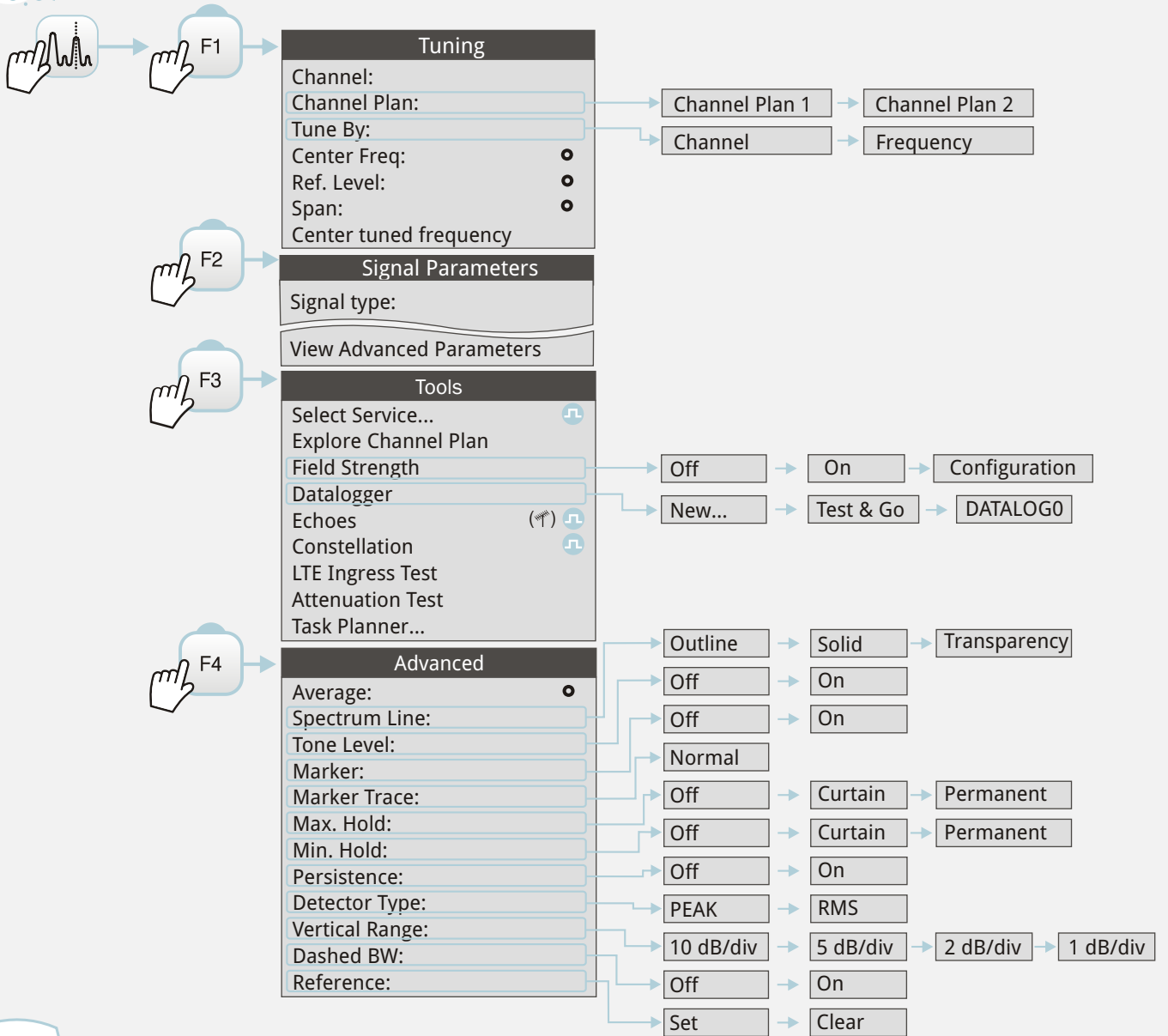


\*Export settings in Preferences

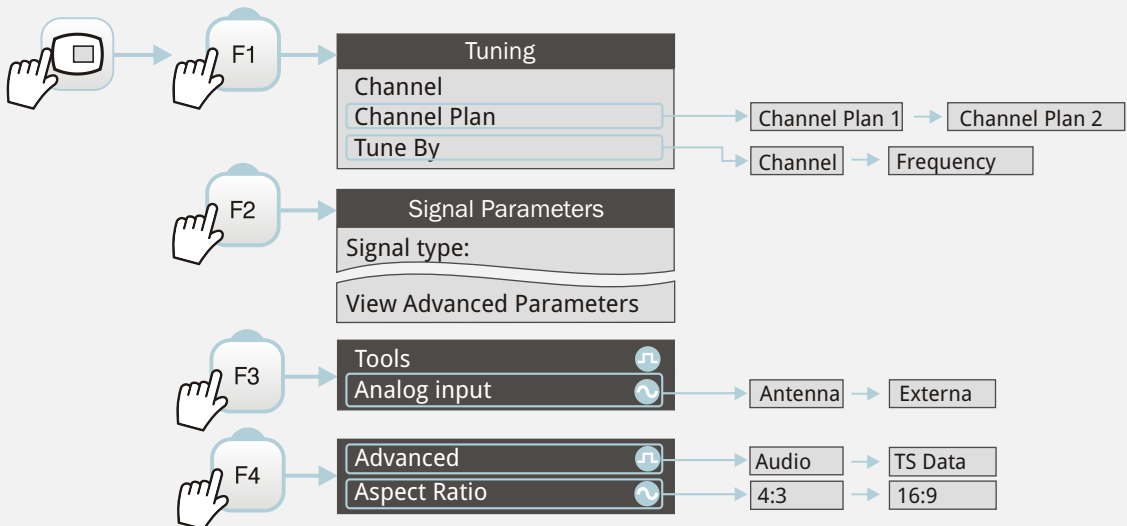
## INSTALLATIONS MANAGEMENT



## SPECTRUM ANALYSER MENU



## TV MENU



Option available for **terrestrial band**

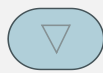
Option available for **satellite band**

Only available for **digital channels**

Only available for **analog channels**



UP



DOWN



LEFT



RIGHT



VALIDATE

## PARAMETER EDITION

The diagram illustrates the process of editing the Center Freq parameter in the Tuning menu through six sequential steps:

- Step 1:** Press the **F1** function key to enter the **Tuning** menu. The menu shows: Channel: 44, Channel Plan: CCIR, Tune By: Channel, Center Freq: 658.00 MHz.
- Step 2:** Press the **DOWN** arrow key three times (x3) to highlight the **Center Freq** parameter.
- Step 3:** Press the **OK** button to enter edit mode for the Center Freq. The value is now highlighted in yellow.
- Step 4:** Press the **LEFT** arrow key to move the cursor to the right of the decimal point.
- Step 5:** Press the **UP** arrow key to increase the frequency from 658.00 to 658.10 MHz.
- Step 6:** Press the **OK** button to confirm the change. The final Center Freq is 658.10 MHz.

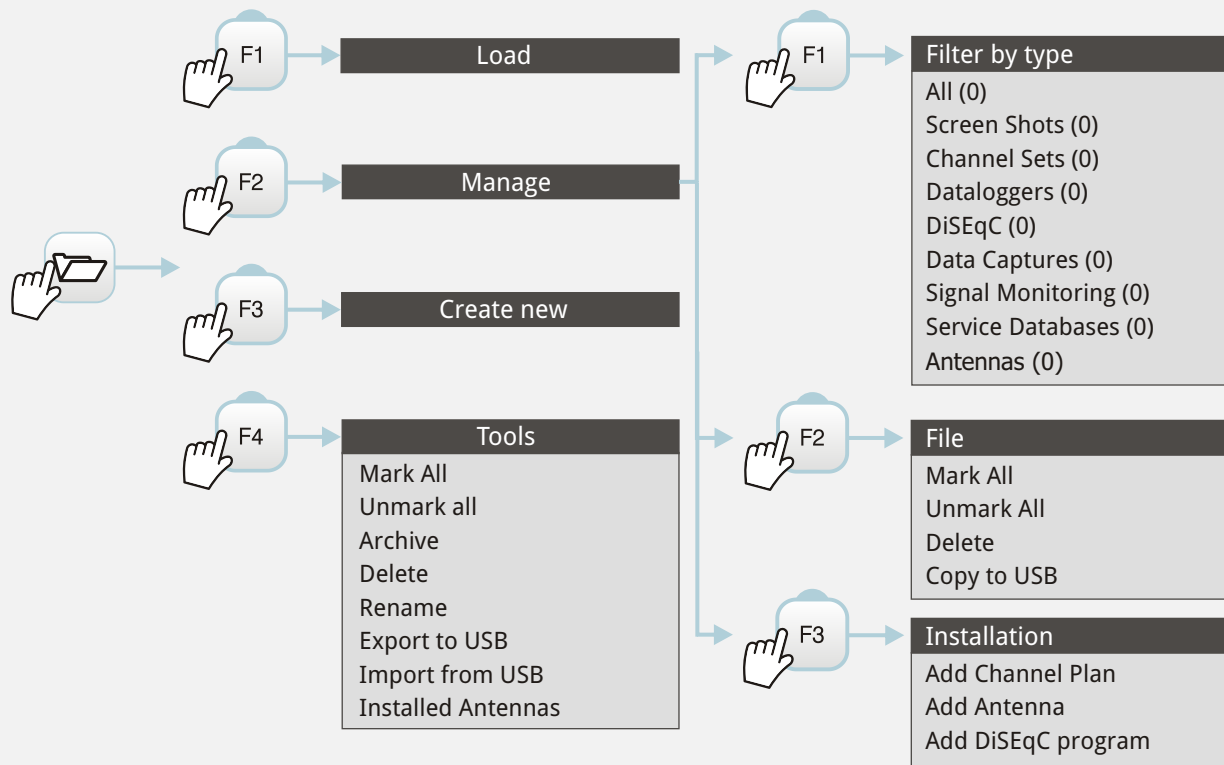
## PARAMETER SELECTION

The diagram illustrates the process of selecting the **Solid** option for the **Spectrum Line** parameter in the **Advanced** menu through six sequential steps:

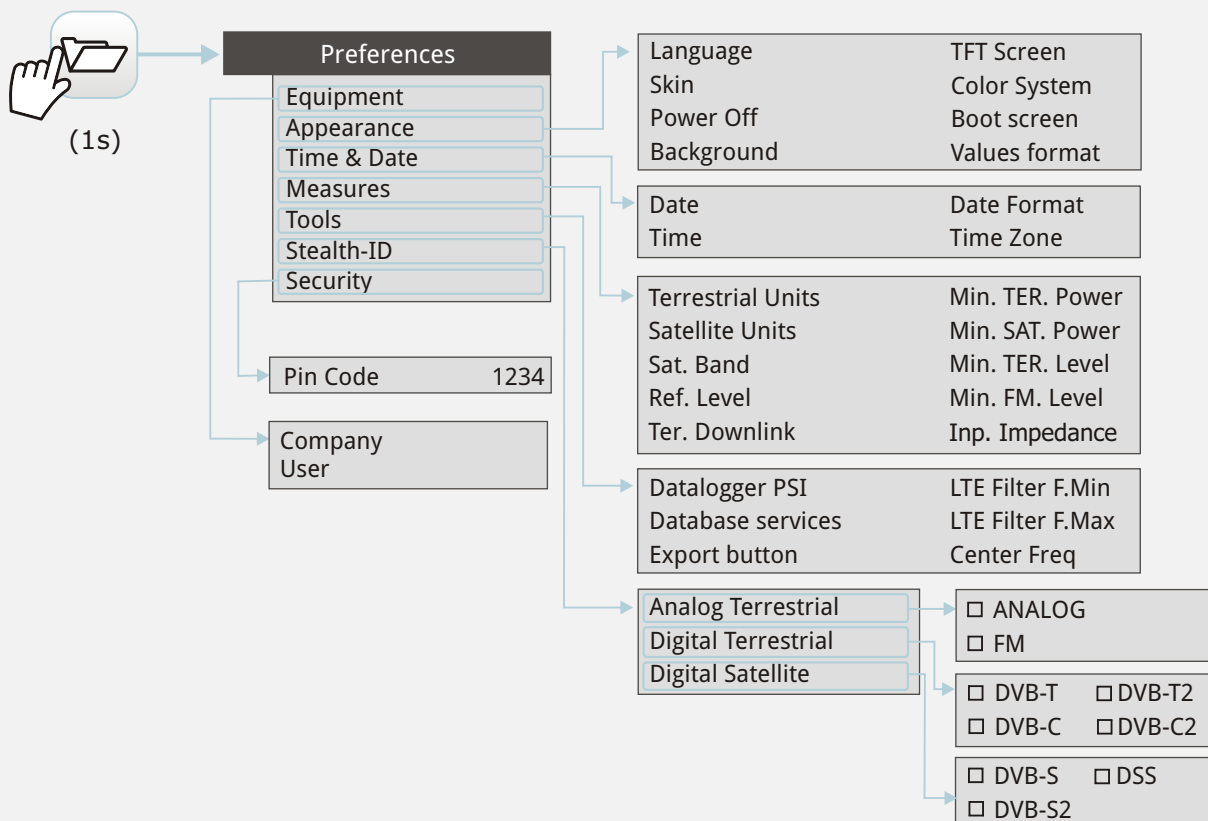
- Step 1:** Press the **F4** function key to enter the **Advanced** menu. The menu shows: Average: 0, Spectrum Line: Outline, Tone Level: Off.
- Step 2:** Press the **DOWN** arrow key to highlight the **Spectrum Line** parameter.
- Step 3:** Press the **OK** button to open the selection list for Spectrum Line. The list includes: Outline, Solid, and Trans.
- Step 4:** Press the **DOWN** arrow key to highlight the **Solid** option in the list.
- Step 5:** Press the **OK** button to confirm the selection. The final Spectrum Line setting is **Solid**.



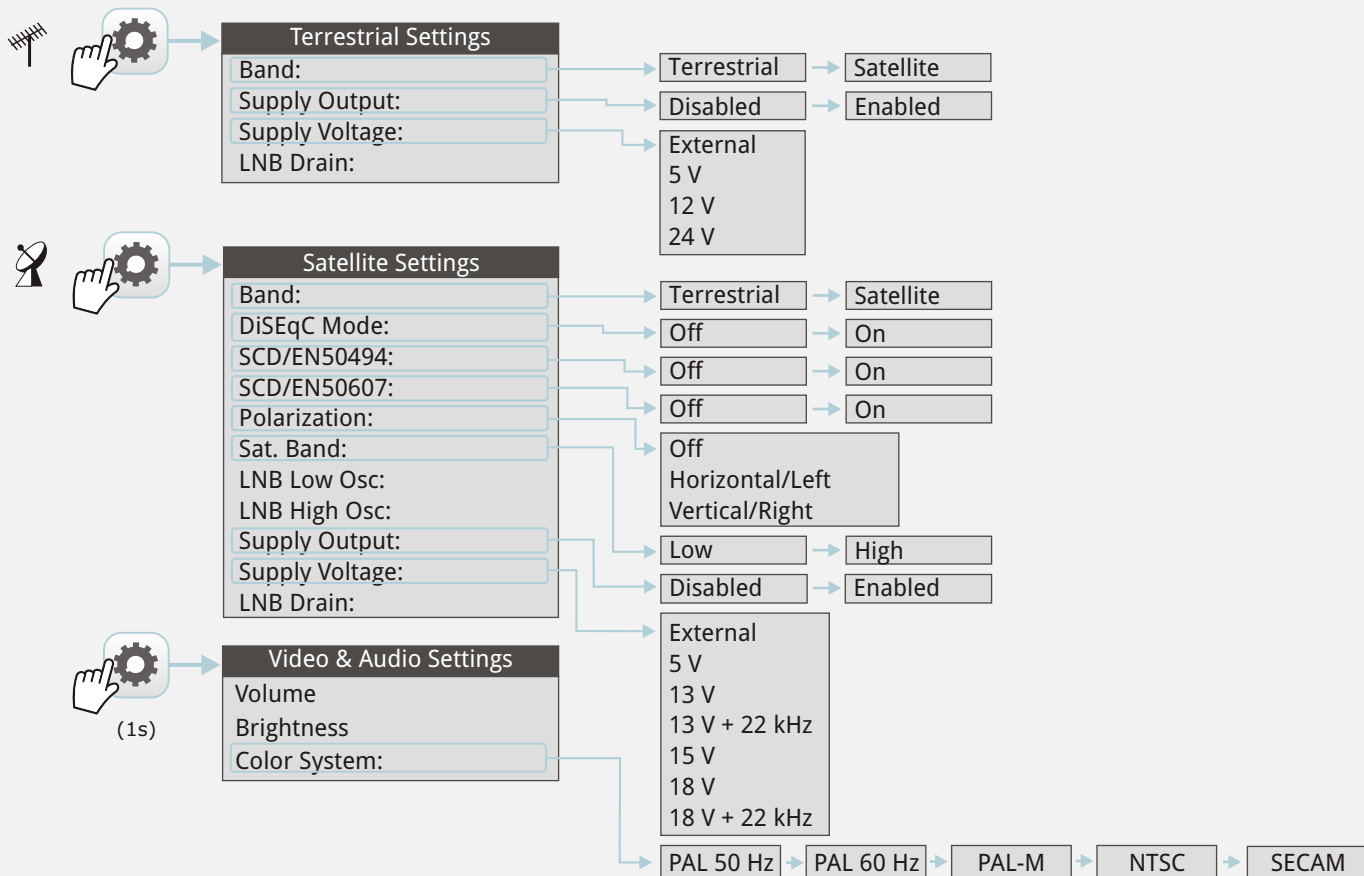
## ▶ INSTALLATIONS MANAGEMENT



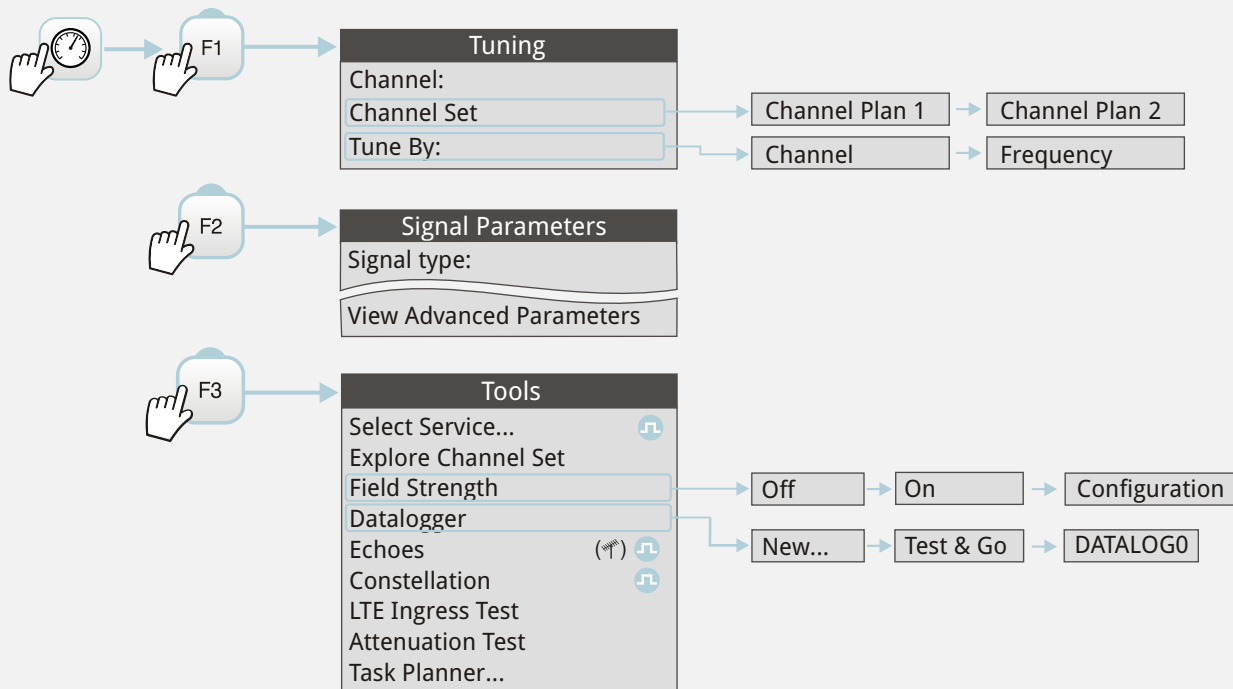
## ▶ PREFERENCES MENU



## SETTINGS MENU

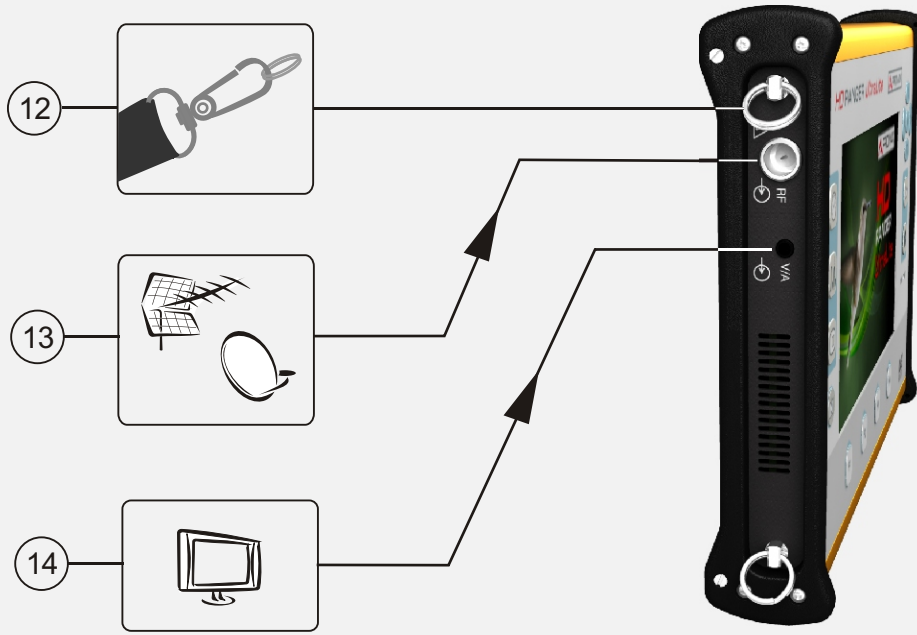


## MEASUREMENT MENU





LEFT SIDE VIEW

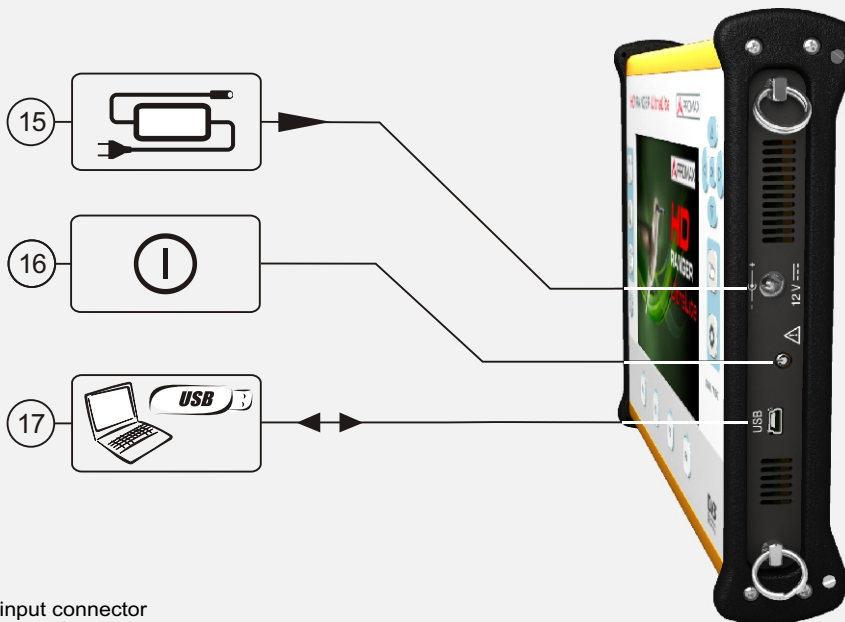


12 Keyring for transport belt

13 RF input connector

14 Video/Audio input

RIGHT SIDE VIEW



15 Power input connector

16 ON/OFF button

17 Mini-USB connector

