



Fitting instructions for 50mm ceiling fix poles

Thank you for choosing a Walcot House curtain pole. Please read all the instructions before proceeding.

Your ceiling fix pole comes complete with track, gliders and fixings.

General Information

Your ceiling fix pole comes as standard with track, gliders and fixings.

Bear in mind that curtains will draw more efficiently without a 'drape' on the floor.

Bracket Placement

1. Single length poles are supplied with a pair of end brackets and caps and a central interim bracket.
2. Two piece poles shorter than 300cm are supplied with a pair of end brackets and caps and a central connector bracket to join the two spigot ended poles.
3. Poles over 300cm are supplied with a pair of end brackets and caps, a central connector bracket and two sets of interim brackets.

N.B.

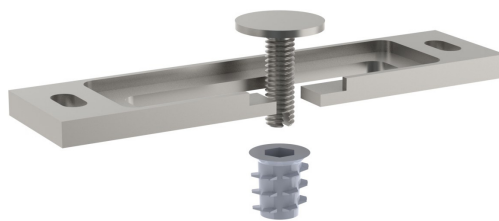
Poles up to 150cm long are supplied with an interim bracket, but this may not be required



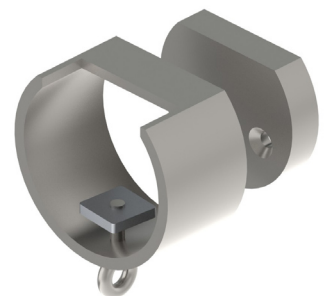
Ceiling Fix Brackets



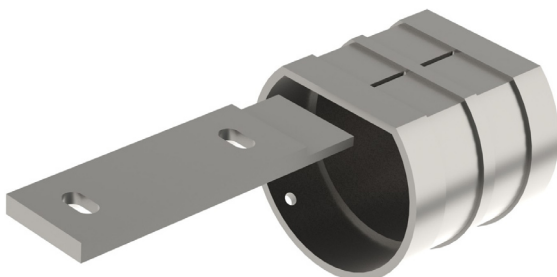
Flush ceiling
connector bracket



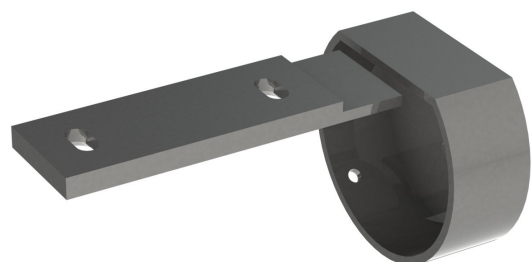
Interim ceiling bracket



Flush ceiling recess
bracket

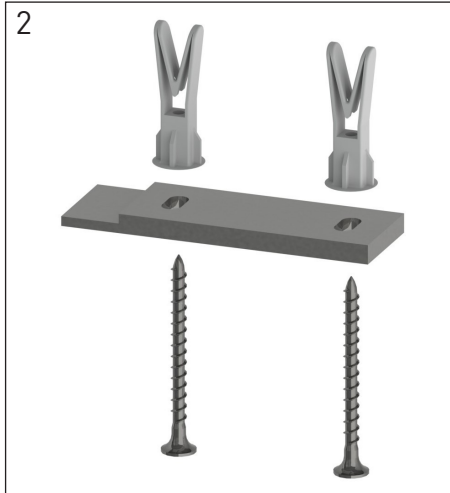
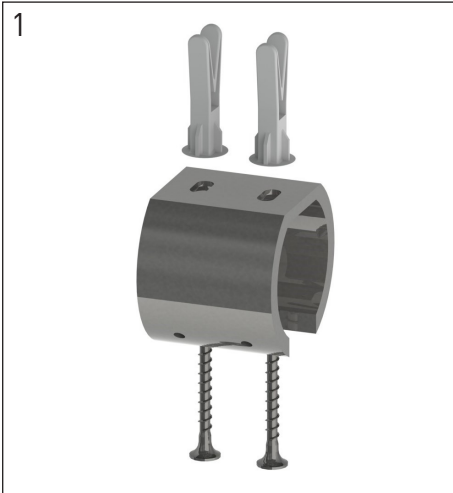


Flush ceiling small bobbin
(including end bracket)



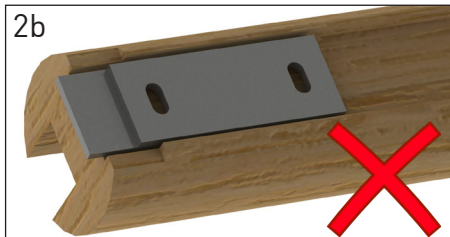
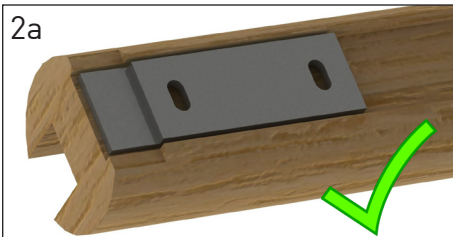
Flush ceiling end cap
(including end bracket)

Fitting End Brackets/Connector Bracket



1. If required, position the connector bracket (where the centre of the pole will be) against the ceiling and mark the positions of the two holes. The connector bracket should be positioned with the grub screws towards the back.

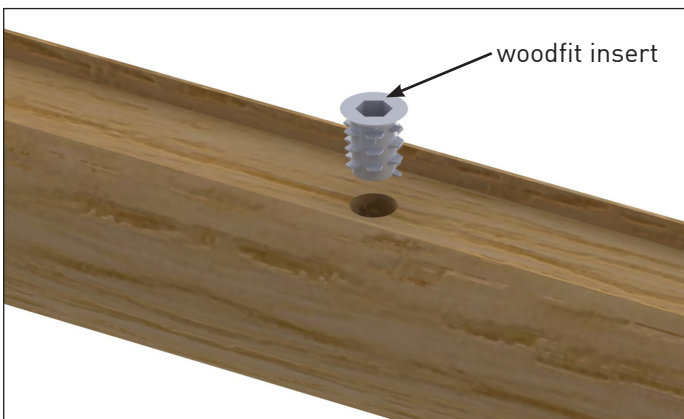
2. Position the end ceiling brackets against the ceiling where the ends of the pole will be, and mark the positions of the fixing holes. (The end of the ceiling brackets should not be proud of where the end of the pole will be, 2a & 2b).



3. Use an 8mm bit to drill the holes and then insert the supplied cavity plugs (or special ceiling fixings as required).

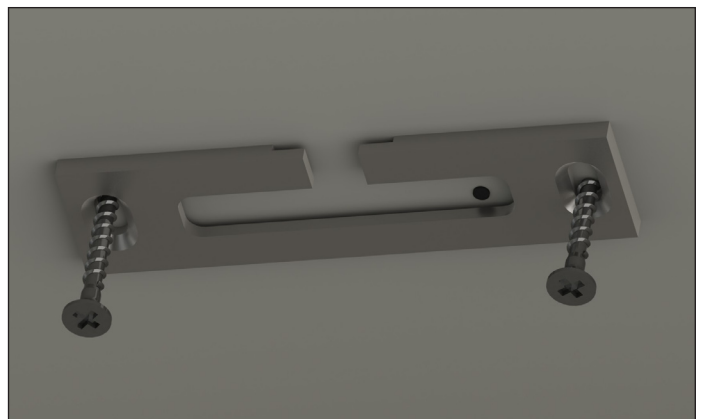
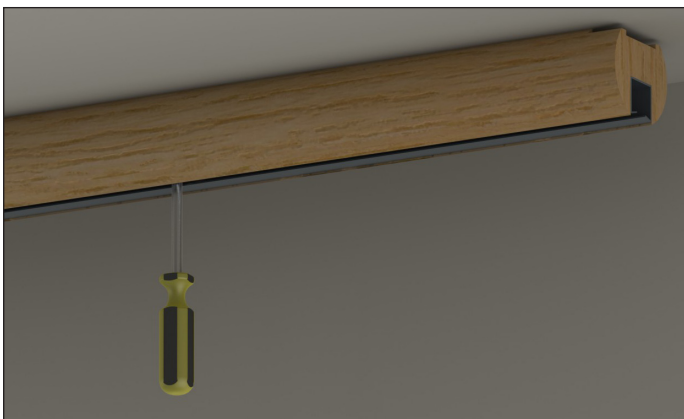
4. Secure all end brackets and the connector bracket (if required). The slots will allow for some minor adjustment.

Interim Brackets



The fittings for the interim brackets are supplied pre-installed in the centres of the spans. If needed, they can be repositioned:

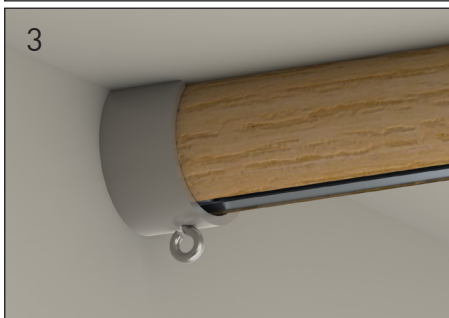
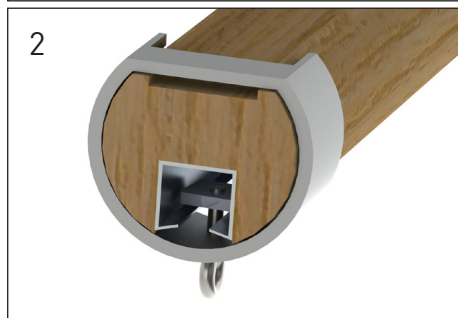
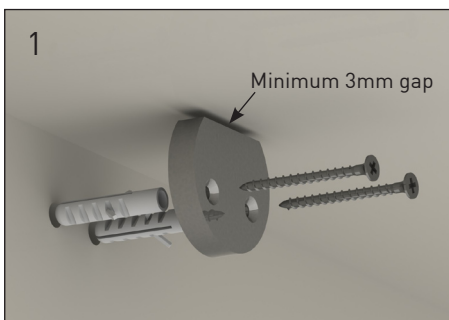
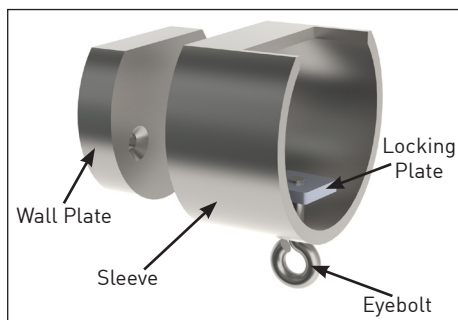
- Remove the 'woodfit insert' using a 6mm allen key.
- Drill a 8mm hole from the top of the pole and through the aluminium track.
- Refit the 'woodfit insert'.



1. Offer the pole up to the ceiling and mark the position of the hole using a scribe or small screwdriver through the fixing hole.

2. Fix the plate to the ceiling so that the mark made in step 1 is towards the end of one of the slots in the plate. For poles in 2 pieces, the mark would be in the slot nearest the connector bracket.

Recess Brackets

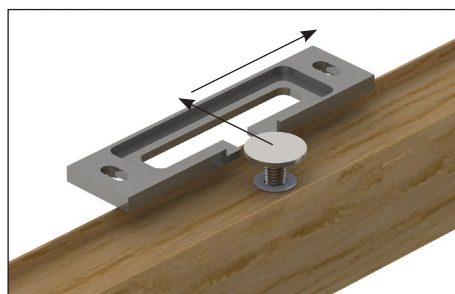


1. Fit the bracket wall plate in position using the screws and wall plugs provided.
N.B. Allow just enough clearance at the top for the sleeve to fit cleanly over the wall plate.
2. Slide the bracket sleeve over the end of the pole ensuring that the locking plate sits inside the track of the pole.
3. Offer the pole up to the wall and slide the sleeve over the wall plate. Secure in place by tightening the eyebolt in the bottom.

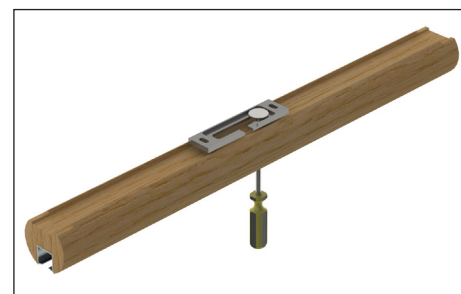
Fitting poles supplied as a single piece



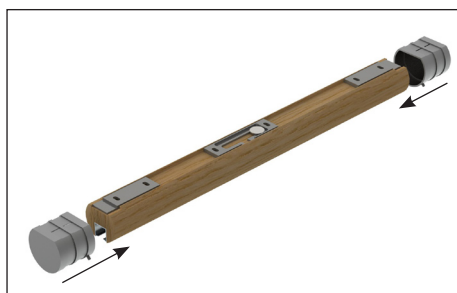
1. Insert the interim fixing bolt so that it sits 5-10mm above the pole.



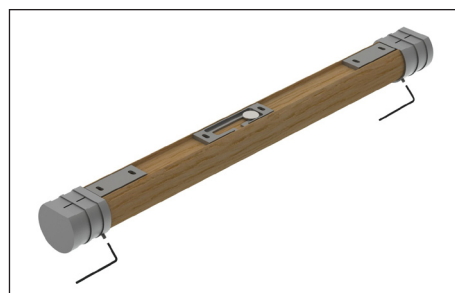
2. Offer the pole up to the ceiling, slide the bolt into the opening of the ceiling plate and slide towards the mark you made when fitting the interim bracket.



3. Tighten the bolt in the pole (turning anti clockwise) until the pole is securely fixed in place.



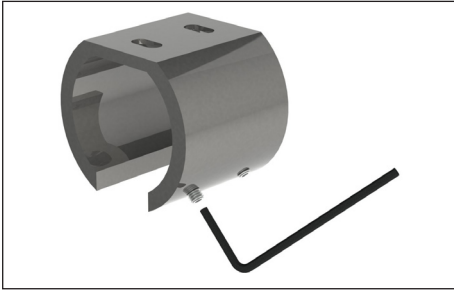
4. Slot the end caps over the pole and end bracket lip. The end caps are labelled 'L' and 'R' so that when fitted, the grub screws will be facing to the back of the pole.



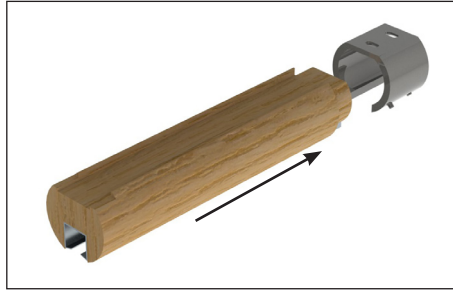
5. Tighten the grub screws, (with the supplied allen key) on the end caps to secure all in place as in the diagram.

N.B.
Make sure that the end cap or bobbin is slotted over the lip of the end bracket as well as the curtain pole.

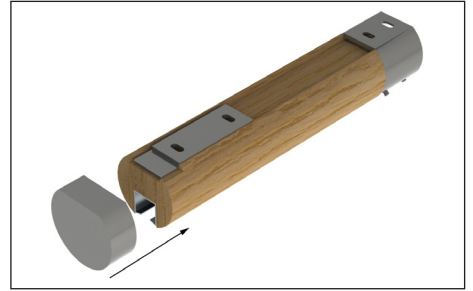
Fitting poles supplied in two pieces



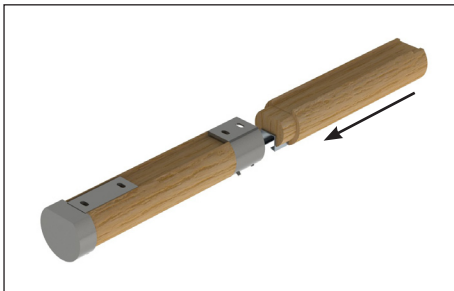
1. Loosen the two grub screws on the connector bracket which is attached to the ceiling.



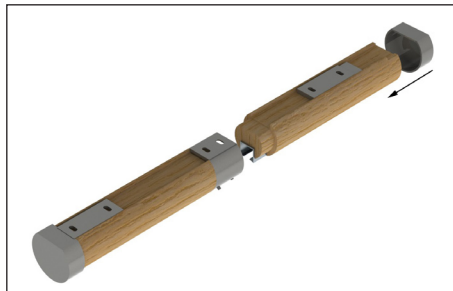
2. Offer one half of the pole up to the ceiling and slide towards the connector bracket. Make sure the interim bracket (if fitted) is slotted together first (see page 4).



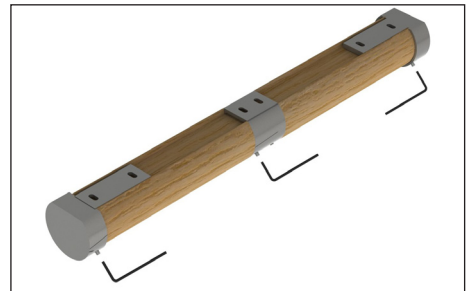
3. Slot one of the end caps over the pole and end bracket lip so the pole is held securely. The end caps are labelled 'L' and 'R' so that when fitted, the grub screws will be facing to the back of the pole.



4. Offer the other half of the pole up to the ceiling and slide towards the connector bracket. Make sure the interim bracket (if fitted) is slotted together first (see page 4).



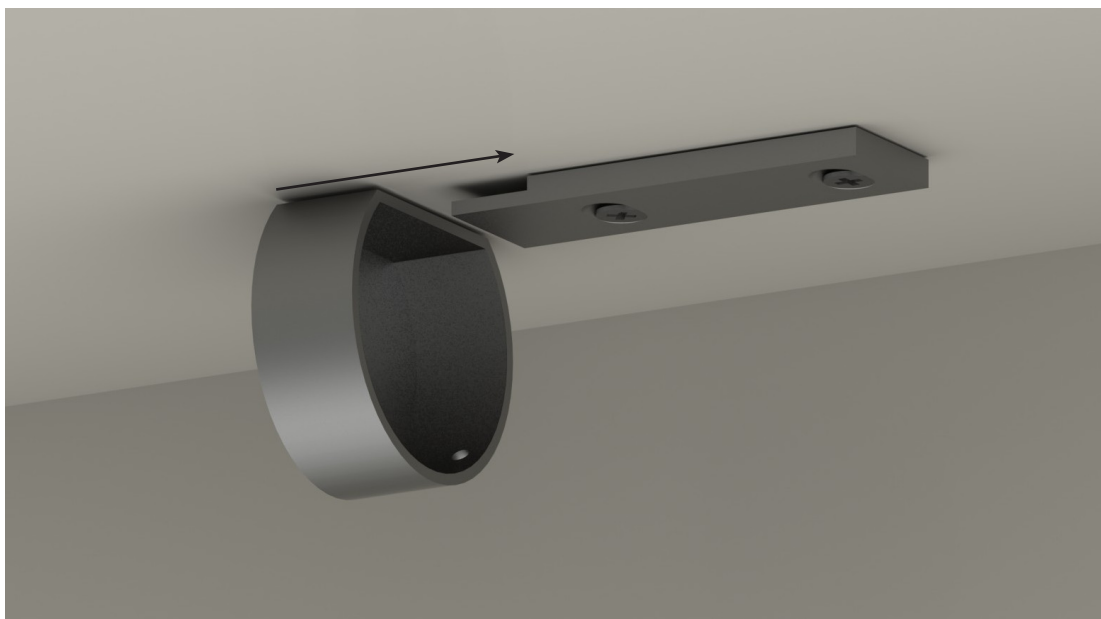
5. Slot the other end cap over the pole and end bracket lip so the pole is held securely. The end caps are labelled 'L' and 'R' so that when fitted, the grub screws will be facing to the back of the pole.



6. Tighten the grub screws, (with the supplied allen key) on the end caps and connector bracket to secure all in place as in the diagram.

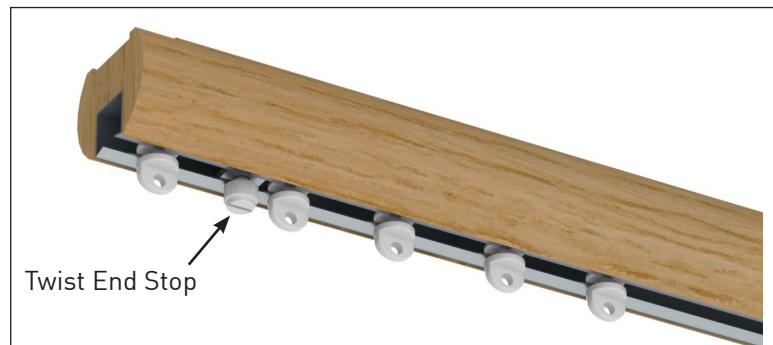
N.B.

Make sure that the end cap or bobbin is slotted over the lip of the end bracket as well as the curtain pole.



Adding/Removing gliders

Tracked poles



1. Loosen the grub screw on the end cap and slide it off. Ensure that the pole is properly supported as it may drop down.
2. Loosen the twist end stop and slide it out of the track.
3. Add or remove the gliders from the pole.
4. Replace the twist end stop, ensuring one glider is left between the end stop and end cap, and re-tighten.
5. Replace the end cap and secure with the grub screw.

This page intentionally left blank

This page intentionally left blank