

Fitting instructions for 50mm ceiling fix poles

Thank you for choosing a Walcot House curtain pole. Please read all the instructions before proceeding.

Your ceiling fix pole comes complete with track, gliders and fixings.

General Information

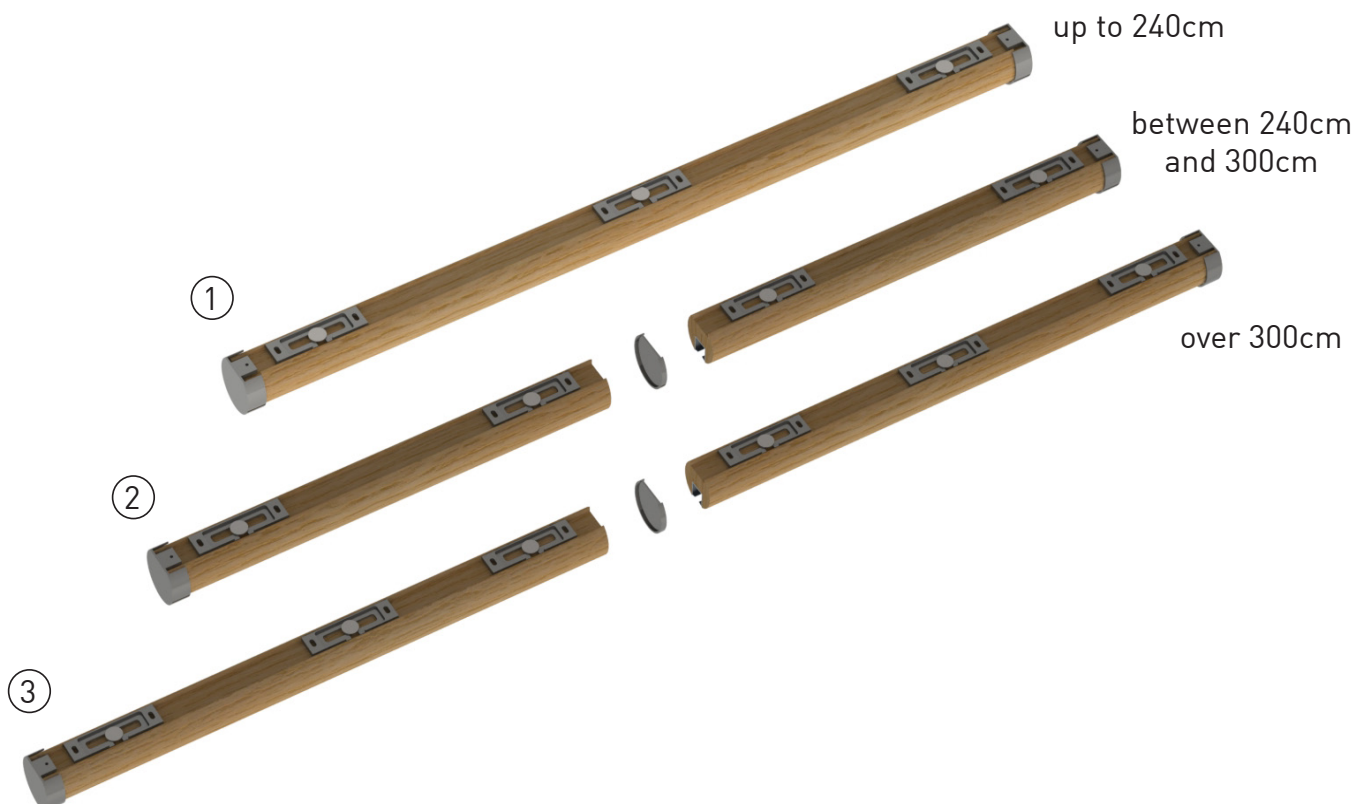
Your ceiling fix pole comes as standard with track, gliders and fixings.

Bear in mind that curtains will draw more efficiently without a 'drape' on the floor.

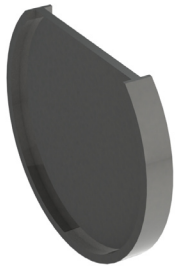
Bracket Placement

1. Single length poles are supplied with a pair of end brackets and finails and a central interim bracket.
2. Two piece poles shorter than 300cm are supplied with a pair of end brackets and finails and a central connector bracket to join the two spigot ended poles.
3. Poles over 300cm are supplied with a pair of end brackets and finails, a central connector bracket and two interim brackets.

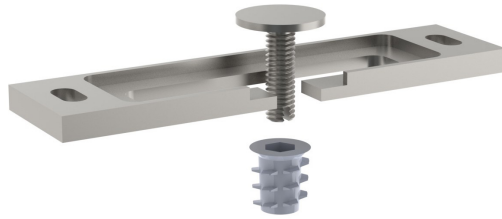
N.B.
Poles up to 150cm long are supplied with an interim bracket, but this may not be required



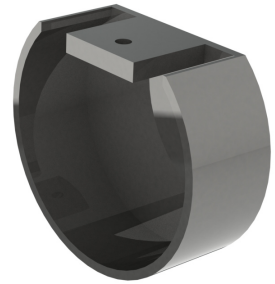
Ceiling Fix Brackets



Flush ceiling connector bracket

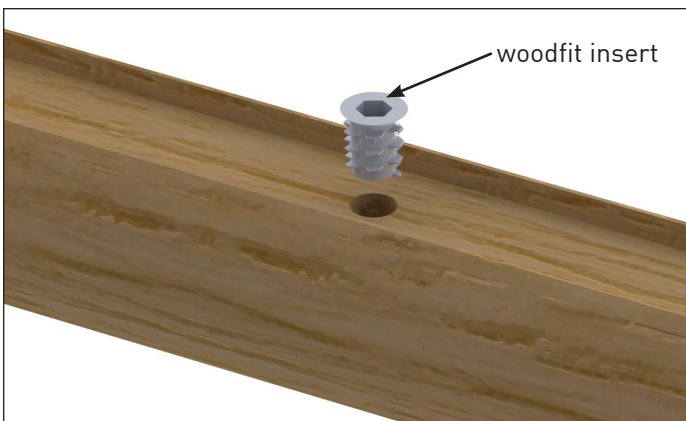


Ceiling bracket



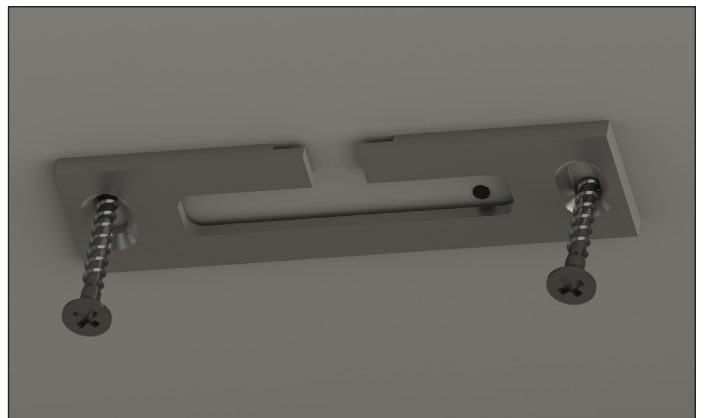
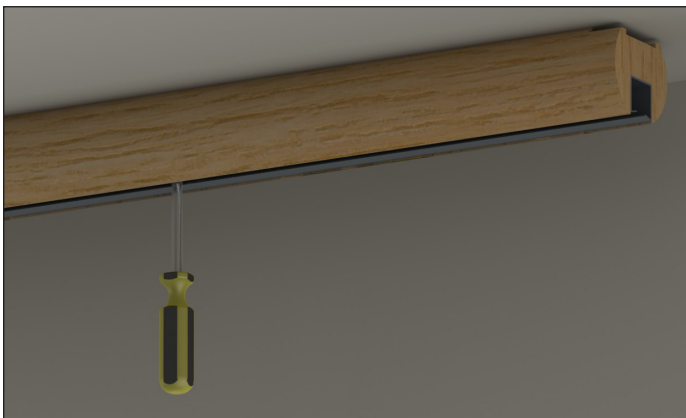
Flush ceiling end cap

Ceiling Brackets



The fittings for the interim brackets are supplied pre-installed in the poles. If needed, they can be repositioned:

- Remove the 'woodfit insert' using a 6mm allen key.
- Drill a 8mm hole from the top of the pole and through the aluminium track.
- Refit the 'woodfit insert'.

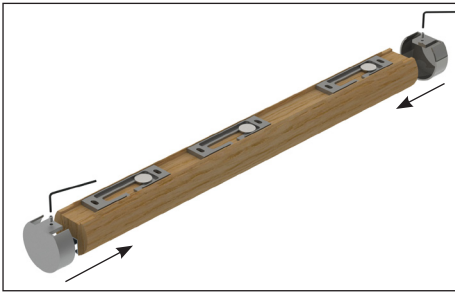


1. Offer the pole up to the ceiling and mark the position of the hole using a scribe or small screwdriver through the fixing hole.

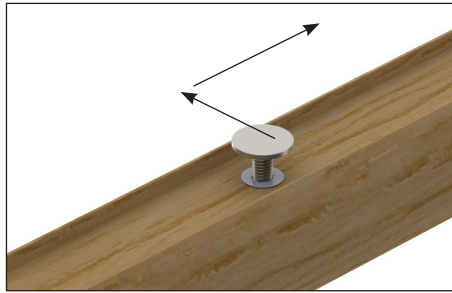
2. Fix the plate to the ceiling so that the mark made in step 1 is towards the end of one of the slots in the plate. For poles in 2 pieces, the mark would be in the slot nearest the connector bracket.

If fitting into a tight area and the pole is in a single piece, the mark can be in the center of the plate instead of at the end.

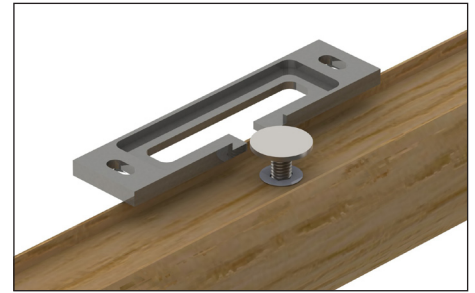
Fitting poles supplied as a single piece



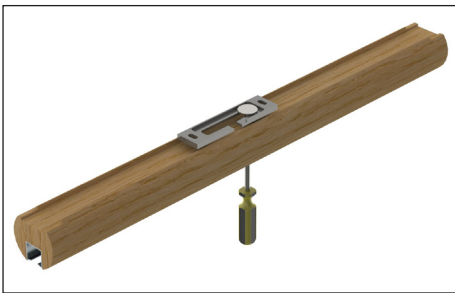
1. Slot the finials over the pole and tighten the grub screws, (with the supplied allen key) to secure in place.



2. Insert the interim fixing bolt so that it sits 5-10mm above the pole.



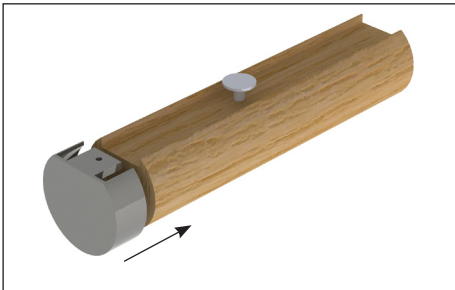
3. Offer the pole up to the ceiling, slide the bolt into the opening of the ceiling plate and slide towards the mark you made when fitting the interim bracket.



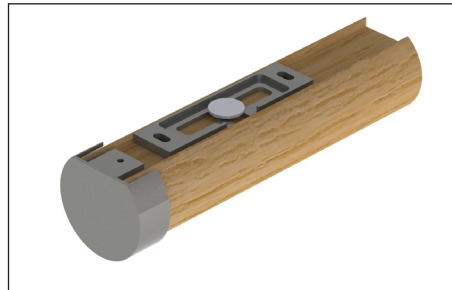
4. Tighten the bolts for all brackets (turning anti-clockwise) until the pole is securely fixed in place.

N.B.
Remember to add the gliders before fitting to the ceiling.

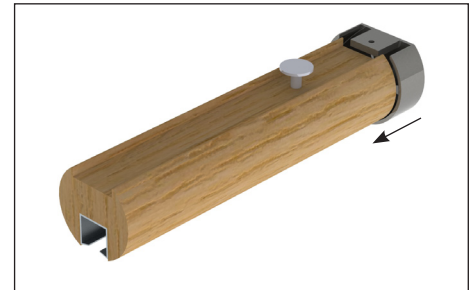
Fitting poles supplied in two pieces



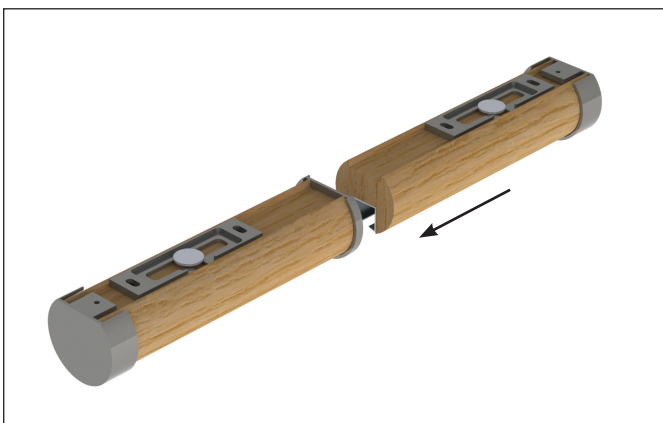
1. Slot one of the finials over the pole and tighten the grub screw. Ensure the grub screw does not sit above the top of the finial.



2. Offer one half of the pole up to the ceiling and secure in place.



3. Slot the other finial over the other end of the pole and tighten the grub screw. Ensure the grub screw does not sit above the top of the finial.



4. Offer the other half of the pole up to the ceiling and slide together, sandwiching the connector to hide the join. Secure the pole in place.

This page intentionally left blank