

Fitting instructions for 19mm and 30mm diameter curtain poles

Thank you for choosing a Walcot House curtain pole. Please read all the instructions before proceeding.

You will have ordered one of the following:

- 19mm diameter pole with slot-in or slot-over finials
- 30mm diameter pole with slot-in or slot-over finials

General Information

Brackets should be placed approximately 10cm in from the end of the pole.

1. The recommended maximum span between brackets is 150cm for 19mm diameter poles, 220cm for 30mm diameter stainless steel poles, and 180cm for brushed bronze poles. This may vary depending on the weight of your curtains.
2. If the pole is in one piece (up to 240cm) and longer than our recommended maximum span then the same bracket is used in the centre as at the ends.
3. If the pole is supplied in two pieces (over 240cm for 30mm diameter poles and 180cm for 19mm diameter poles), you will have been supplied with a spring connector. A central bracket is used to support the join.
4. Passing brackets are used for longer spans. These must be used in conjunction with Walcot House passing rings. When passing brackets are ordered, poles are delivered with button headed screws already inserted into the pole.

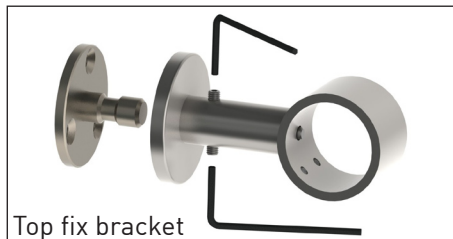
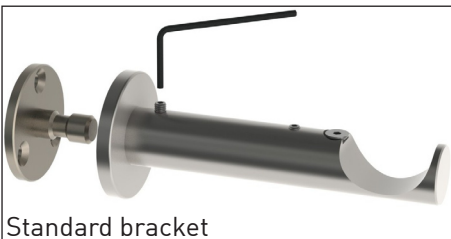


Joining Two Poles

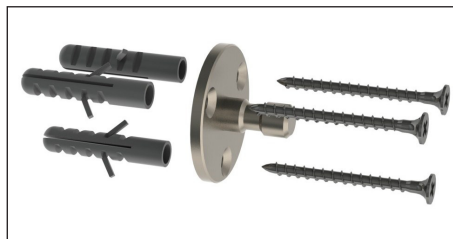
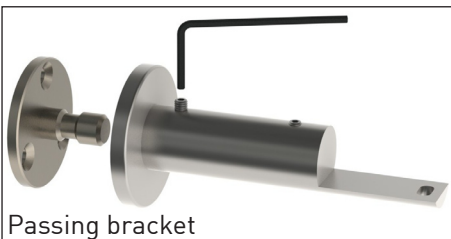


1. Insert the connector halfway into the end of one of the poles.
2. Slide the end of the second pole over the connector to form a tight joint.
3. Place the joined pole in the central bracket so that the join is supported in the cup.

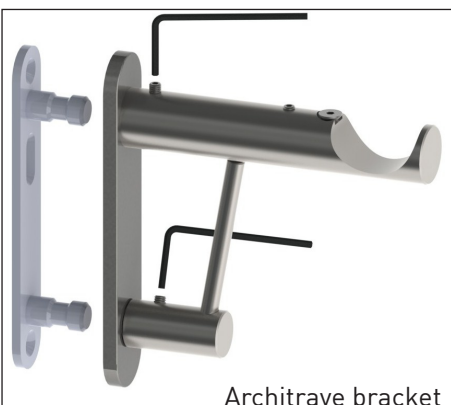
Fitting Wall Plates



1. Remove the wall plate from the bracket by loosening the grub screw(s) with the supplied allen key.
2. Position the wall plate against the wall and mark the positions of the holes. For best support locate two screws at the top.
3. If mounting onto a wooden batten, drill a 2mm pilot hole, or, if mounting directly onto a masonry wall, use the appropriate drill size and insert suitable wall plugs.

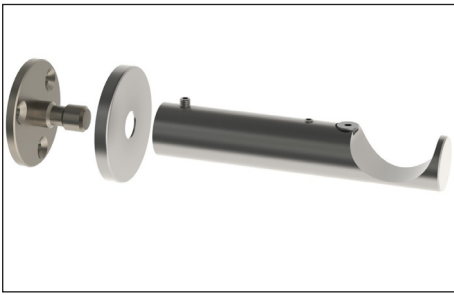


N.B. The wall plate for the ring bracket has a different alignment to the wall plates for the other brackets.

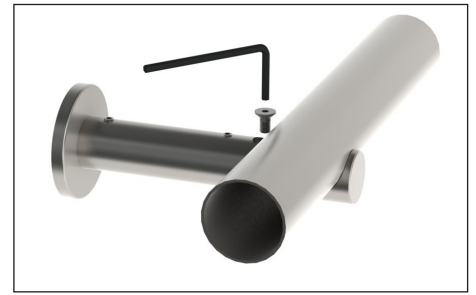
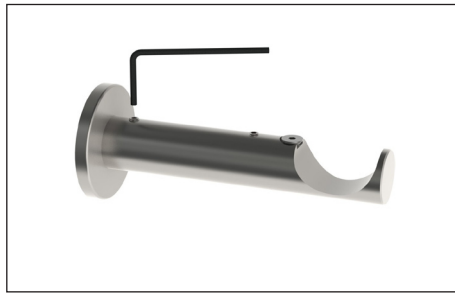


The architrave bracket has a longer screw slot in the middle to allow for minor vertical adjustments in bracket placement, before the top and bottom screws are attached.

Standard Brackets

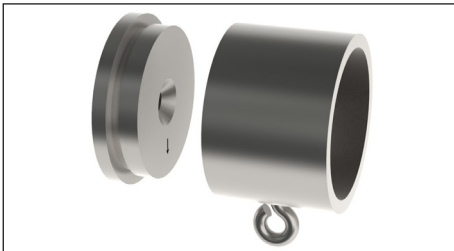


1. Fit the cover plate and barrel to the wall plate, and tighten the grub screw.

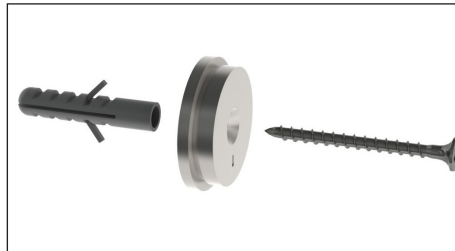


2. Mount the pole in the bracket by loosening the screw on the top edge of the pole cup. Place the pole in position, and tighten the screw until the pole is gripped in place.

Recess Brackets



1. Unscrew the bracket sleeve from the wall plate.



2. Fix the wall plate in position using the screw and wall plug provided.

N.B. The arrow on the wall plate should be pointing vertically down.



3. Slide the bracket sleeve over the end of the pole and then align the pole with the wall plate.



4. Screw the bracket sleeve back onto the wall plate to secure the pole. The eyelet should be facing down. (This is for attaching the last hook of the curtain).

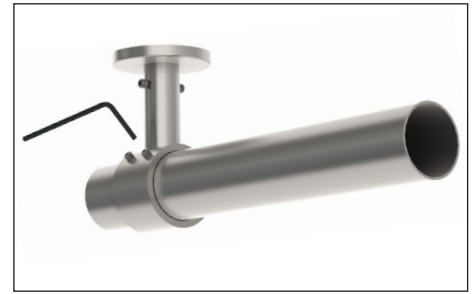
Top Fix Brackets



1. Fit the cover plate and barrel over the wall plate.

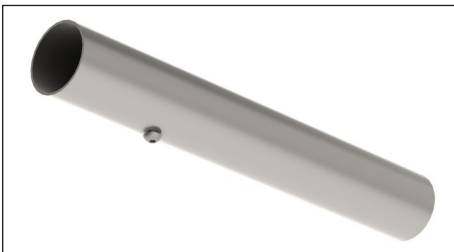


2. Tighten the grub screws just enough to hold the bracket barrel on the wall plate but to still allow the bracket to swivel.

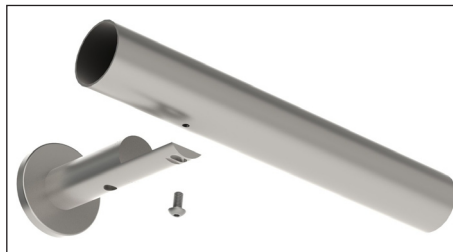


3. Insert the pole in the bracket. Rotate the barrel slightly if necessary to obtain the correct alignment then fully tighten all grub screws to secure the pole.

Passing Brackets



1. Poles supplied for use with passing brackets will need to be drilled and tapped using a 3.3mm drill bit and M4 tap.



2. The positioning of the passing bracket on the wall should correspond to the position of the screw hole in the bottom of the pole.



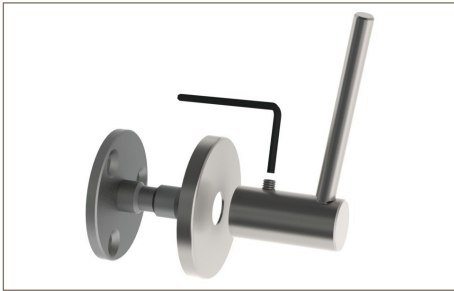
3. Locate the pole in place on the bracket and use the button headed screw to secure the pole. Tighten using the allen key provided.



4. When passing brackets are used as the central support, for poles joined with a spring connector, the screw is inserted into only one pole. The join will therefore be slightly to one side of the central position. When inserting the spring connector into the pole, place the gap in the spring connector on the underside to allow the securing screw to enter fully into the pole.

Support Arms

The support arm can be used with all of our brackets (except recess and top fix brackets). We have shown it with a standard bracket for simplicity.



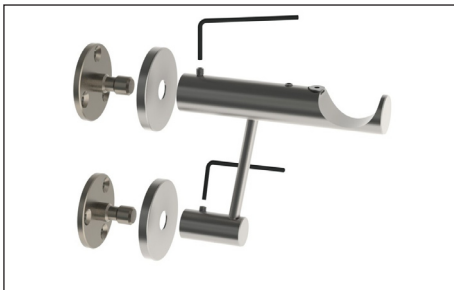
1. Fit the main bracket in place on the wall following instructions on page 3.
2. Loosen the grub screw on the Support arm and remove the wall plate and cover plate.



3. Re-assemble the support arm without the cover plate.



4. Offer up the support arm to the main bracket slotting the arm into the socket on the underside.
5. Mark the position of the screw holes and secure the wall plate to the wall as detailed on page 2.



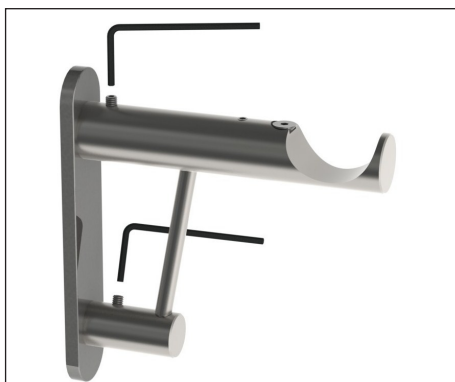
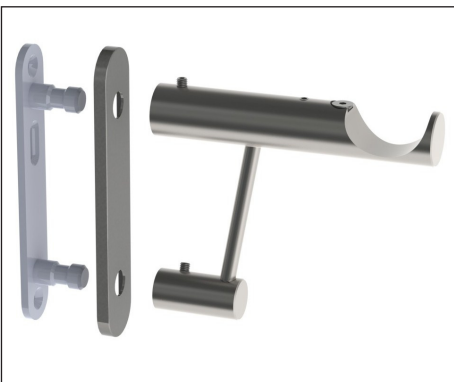
6. Slide the cover plate back over the wall plate and fit the support arm in place.

(You may have to remove the main bracket from its wall plate to do this).

N.B.

The support arm has an adjustable arm which can be unscrewed slightly from the base to take up any slack between the bracket and the support arm.

Architrave Brackets

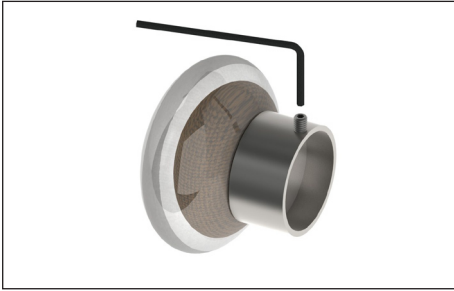


1. Attach the wall plate as shown on page 2.
2. Place the cover plate over the wall plate.
3. Offer the support up to the main bracket, slotting the arm into the socket on the underside.
4. Slide the support and bracket over the lugs on the wall plate.
5. Tighten the grub screws on both the bracket and support arm to secure in place.

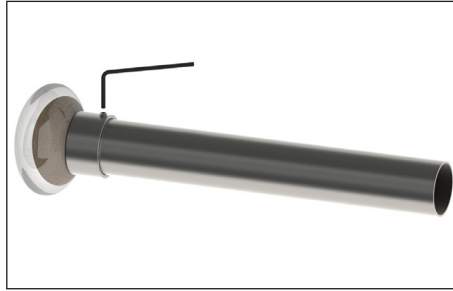
N.B.

The architrave wall plate can be used with any of our face fix brackets if required.

Finials - Slot-over

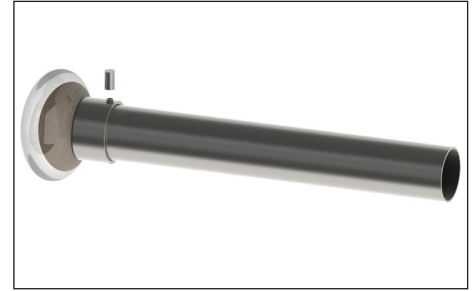


1. Loosen the grub screw on the finial collar.



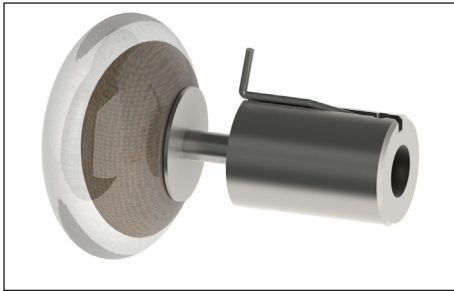
2. Slot the finial over the end of the pole with the grub screw pointing upwards and slightly turned towards the wall so that it is not visible.

3. Tighten the grub screw firmly to the pole.

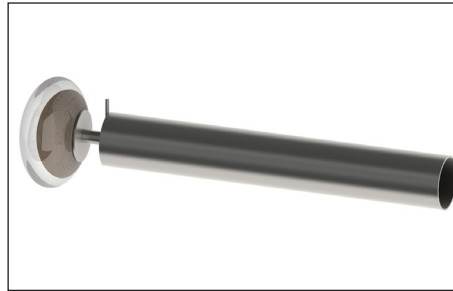


4. If the optional ring stop is required (for glass finials only), screw it onto the end of the grub screw. This will stop the end ring passing over the finial. Some finials will be big enough to prevent this without using the ring stop.

Finials - Slot-into



1. Ensure that the spring is fitted securely into the spigot



2. Gently push the finial into the pole. The spring will hold it securely in place and also act as a ring stop. Turn the pole so that the ring stop is facing upwards.

N.B.

To remove the finial, press down on the spring and pull out of pole. When removing glass finials, ensure you only pull out from the metal spigot rather than the glass finial itself.

This page intentionally left blank

This page intentionally left blank