

# Electrochemical-Enzymatic Determination of Glucose in Beverages

## A laboratory for quantitative determination by selective electrochemistry

This laboratory seeks to quantitatively determine glucose concentration in common beverages. The method employed is enzyme catalyzed oxidation of glucose, quantified by chronoamperometry. With an inexpensive patterned electrode and low cost glucose oxidase enzyme, an electrochemical sensor is constructed to selectively measure glucose in complicated beverages which can present as analytically challenging matrices. This lab briefly discusses conceptual information about sugars used to sweeten common beverages, enzyme-substrate interactions, glucose mutarotation, enzyme kinetics, and electroanalysis.

### Introduction

Bioanalytical chemistry, a sub-discipline of analytical chemistry, uses quantitative and qualitative methods of analysis to evaluate biological based chemical species. These biological species are commonly found in complicated matrices such as blood and may include proteins, drug metabolites, and sugars.

In a complicated matrix such as blood, it is difficult to quantitatively determine the presence and concentration of target analytes. Therefore, the matrix is often simplified by chemical separations (e.g. HPLC, GC, electrophoresis), prior to quantitative determination.

Another manner to quantify an analyte among several interferences is by increasing selectivity. Many enzymes and substrates function as a lock and key gateway. The enzyme catalyzes a reaction only when a very specific substrate binds to its active site.

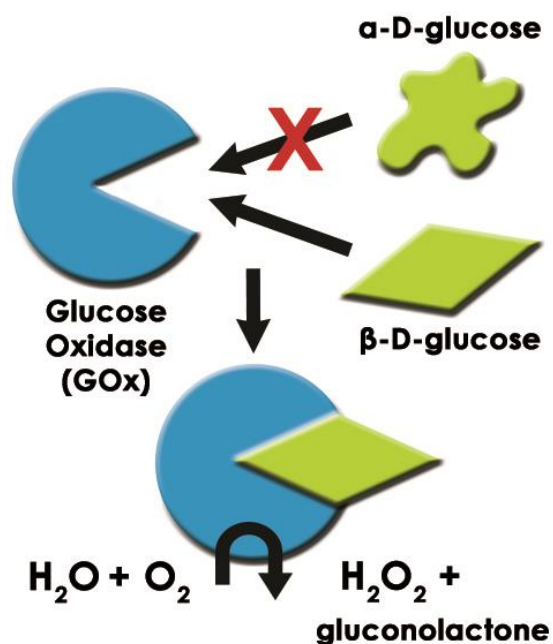


Figure 2. Diagram of Glucose Oxidase Enzyme with Substrate  $\beta$ -D-glucose and Product  $H_2O_2$ .

Such is the case for glucose oxidase and its substrate,  $\beta$ -D-glucose. Therefore despite a complicated matrix of chemical species, an assay based on glucose oxidase will only have an analytical signal from  $\beta$ -D-glucose (see: Figure 2).

Electrochemical methods are highly sensitive. Use of electrochemistry with enzymes as described above adds selectivity. Therefore, in complicated matrices (such as common soft drinks, which could contain caffeine, sugars, preservatives, water, colorings, acids, and other chemicals), electrochemical determination

Nutrition Facts	
Serving Size 8 fl oz (240 mL)	
Serving Per Container 2.5	
Amount Per Serving	
<b>Calories</b> 110	
	% Daily Values*
<b>Total Fat</b> 0g	0%
Saturated Fat 0g	0%
Trans Fat 0g	
<b>Sodium</b> 70mg	3%
<b>Total Carbohydrate</b> 31g	10%
Dietary Fiber 0g	0%
Sugars 30g	
<b>Protein</b> 0g	0%
*Percent Daily Values are based on a 2,000 calorie diet.	

Figure 1. Example of U.S. Nutrition facts on Edible Consumer Goods.

of the extent of an enzymatic reaction is a sensitive and selective method by which to determine glucose concentration.

The assay described here uses glucose oxidase to catalyze the oxidation of  $\beta$ -D-glucose to gluconolactone (GNL), with hydrogen peroxide ( $H_2O_2$ ) as a byproduct (see: Figure 2). The hydrogen peroxide is electrochemically detected at a platinum electrode. The current from hydrogen peroxide oxidation is calibrated against standard glucose solutions to construct a calibration curve and determine the unknown glucose concentration.

## Biochemistry Background

The United States Food and Drug Administration (FDA) does not have stringent policies on nutritional label reporting of sugars (see: Figure 1) [1]. On a nutritional label, the entry for "Sugars" under Total Carbohydrate may include any of the following naturally occurring or artificially added sugars: fructose, glucose, sucrose, and dextrose and in one of several forms (crystalline as in sugar crystals or liquid as in high fructose corn syrup). Any sugars added to the product must be stated on the ingredients list. While a general consumer is made aware of added sugars and total mass of sugar per serving, the customer does not know the concentration or ratios of the sugars present [2].

### 1.1 Types of Sugars

#### 1.1.1 Fructose

Fructose is also called "fruit sugar" as it is the predominant natural sugar found in plant products such as berries, flowers, and root vegetables (see: Figure 3). For use in processed foods, fructose is commonly obtained from sugar cane and sugar beets [2, 3, 5].

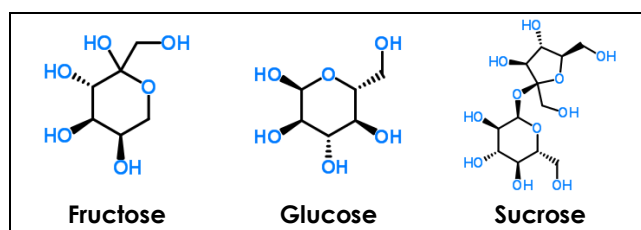


Figure 3. Chemical Structures of Select Sugars.

When compared to other sugars, fructose is the sweetest tasting [3]. It is a monosaccharide, the most basic unit of a carbohydrate. It is absorbed directly into the bloodstream when consumed by humans and does not elicit a release of insulin from the pancreas.

#### 1.1.2 Glucose

Glucose is also a monosaccharide and is the primary source of cellular energy in plants and animals. (see:

Figure 3). Commercially, glucose added to foods is most often sourced from grains, corn being used most often. Glucose enters the bloodstream after processing through the gut and liver [2, 3, 5].

#### 1.1.3 Sucrose

Sucrose, commonly referred to as "white" or "table" sugar, is also a monosaccharide and is the primary source of cellular energy in plants and animals (see: Figure 3). Commercially, glucose added to foods is most often sourced from grains, corn being used most often. Glucose enters the bloodstream after processing through the gut and liver [2, 3, 5].

### 1.2 High Fructose Corn Syrup

In recent years, processed food manufacturers use high fructose corn syrup (HFCS) in lieu of sucrose as a sweetener. Both consist of glucose and fructose, but HFCS is less costly due to governmental corn subsidies. In humans, sucrose is broken down to glucose and fructose which are processed as monosaccharides [2, 3, 5].

HFCS is a mixture of the monosaccharide sugars glucose and fructose. Often, HFCS is used in processed foods because it is less expensive than sucrose. Commonly, perceived sweetness of sugars is based relative to sucrose. Sucrose has a rating of 1 on the "sweetness scale," while glucose and fructose are rated 0.74 – 0.8 and 1.17 to 1.75, respectively [4].

HFCS formulations are prepared and named based on their content of fructose. A common blend of HFCS used in soft drinks is HFCS55, which means it contains 55% fructose and 42% glucose in water. Based on relative sweetness, HFCS55 provides sweetness similar to pure sucrose.

Consider the sugar content of a cola carbonated beverage. The label states that a can with volume 355 mL contains 39 g sugar. According to the ingredient label, the sugars are from HFCS. Therefore, the effective glucose concentration in such a can would be 16.4 g ( $0.42 \times 39 = 16.4$ ).

For quantification of glucose, it is important to realize that the sugar content listed on a can of carbonated beverage sweetened with HFCS55 is not solely due to glucose. In this lab, only glucose, and more specifically only  $\beta$ -D-glucose (the substrate for the enzyme glucose oxidase) is the analyte of interest.

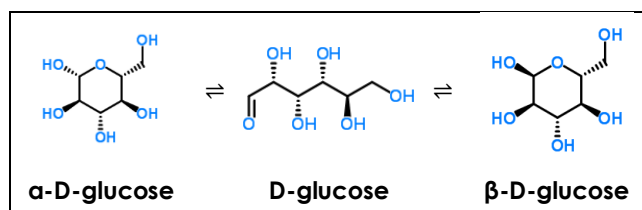
### 1.3 Glucose Mutarotation

Two stereoisomers of glucose are D-glucose and L-glucose. The D or L designation with glucose refers to the asymmetric carbon farthest from the aldehyde or keto group. Most naturally occurring sugars are D isomers. D and L sugars are mirror images of one

another. D-glucose is the isomer found in nature and in nutritive sweeteners. D-glucose can exist in an open chain and closed chain form, the former being thermodynamically unstable.

When a solution of D-glucose is prepared in water, there is a dynamic equilibrium between the open chain and closed chain forms  $\beta$ -D-glucose and  $\alpha$ -D-glucose [4]. The cyclic forms of carbohydrates can exist in two forms,  $\alpha$ - and  $\beta$ - based on the position of the substituent ( $OH^-$ ) at the anomeric center. The  $\alpha$ - and  $\beta$ - forms are sometimes described as anomers since they are isomers at the anomeric center.

Because the open chain is not thermodynamically stable, an equilibrium mixture between the  $\alpha$ -D-glucose and  $\beta$ -D-glucose will result given enough time. At room temperature, mutarotation reaches equilibrium in several hours resulting in a mixture of 36%  $\alpha$ -D-glucose and 64%  $\beta$ -D-glucose.



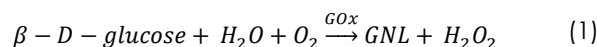
**Figure 4. Mutarotation Equilibrium Reaction of D-glucose.**

It is important to account for glucose mutarotation when using freshly prepared solutions of glucose. After preparation, solutions must be equilibrated at room temperature for at least twelve hours before use; otherwise the ratio of  $\beta$ -D-glucose and  $\alpha$ -D-glucose will be unpredictable and contribute to erroneous measurements [4].

## 1.4 Glucose Oxidase

Glucose oxidase (GOx) is an enzyme that selectively catalyzes the oxidation of  $\beta$ -D-glucose to  $\beta$ -D-gluconolactone (GNL) with hydrogen peroxide as a byproduct. GOx is a highly selective enzyme. Even in the presence of nearly identical  $\alpha$ -D-glucose, only  $\beta$ -D-glucose is a substrate for GOx. Enzyme|substrate interactions act like a lock and key.  $\beta$ -D-glucose is like the key while GOx is like the lock as depicted in the illustration in Figure 1.

Overall, the general reaction of interest shows a 1:1 molar relationship between  $\beta$ -D-glucose and hydrogen peroxide (see: Equation 5).

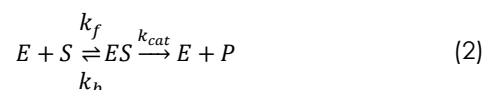


The bioanalytical assay described here indirectly quantifies glucose by measuring the molar concentration of  $H_2O_2$ .  $H_2O_2$  is an electrochemically active chemical species and can be monitored using

electrochemical techniques such as chronoamperometry.

## 1.5 Enzyme Kinetics

The Michaelis-Menten model of enzyme kinetics is perhaps the most straightforward and well known model used in biochemistry (see: Equation 2). The model is based on a general kinetic approach for the steps of an enzyme reaction [5].



Enzyme ( $E$ ), which acts as a catalyst, combines with substrate ( $S$ ) to form an enzyme-substrate complex, ( $ES$ ). This is a reversible equilibrium step with associated forward ( $k_f$ ) and reverse ( $k_b$ ) rate constants. The  $ES$  complex then catalytically reacts to produce product ( $P$ ) plus enzyme at a specific rate ( $k_{cat}$ ).

From the general reaction (see: Equation 2), application of typical first order kinetics shows that the overall reaction rate is equal to the rate of appearance of product. The work of Michaelis and Menten is most recognizable by the reaction rate model,

$$\bar{v} = \frac{d[P]}{dt} = \frac{V_m[S]}{K_m + [S]} \quad (3)$$

where  $\bar{v}$  = reaction rate,  $[P]$  = concentration of enzyme product,  $t$  = time,  $[S]$  = substrate concentration,  $V_m$  = maximum rate at saturating concentration of substrate, and  $K_m = [S]$  when at  $1/2 V_m$ . The reaction rate increases with increasing substrate concentration, asymptotically approaching its maximum rate, attained when all enzyme is bound to substrate.

The maximum kinetic rate achieved by the system at maximum (saturating) substrate concentrations is called  $V_m$ . The Michaelis constant is the substrate concentration at which the reaction rate is at half-maximum.  $K_m$  is inversely related to the affinity of the substrate for the enzyme. The value of the Michaelis constant is dependent on enzyme, substrate, and environmental conditions such as temperature and pH [5].

The discussion on enzyme kinetics presented above is brief. It is important to be aware that the reactions of interest in this laboratory are not simple reactions driven only by thermodynamic control.

## Electrochemical Background

Enzyme mediated quantification of glucose by chronoamperometry requires a basic knowledge of the theory and instrumentation (tools). A wealth of knowledge exists for both topics. Here, only a brief

overview, sufficient to understand the methods employed, is given.

## 1.6 Chronoamperometry

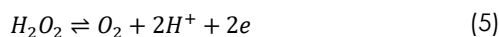
This lab will use an electrochemical experiment called chronoamperometry. As the name implies, current is measured as a function of time while the cell potential is held constant. Current at a given time,  $i(t)$  (in amperes) is directly proportional to concentration, as shown by the Cottrell Equation,

$$i(t) = \frac{nFAD_o^{1/2}C_o^*}{\pi^{1/2}t^{1/2}} \quad (4)$$

where  $n$  = number of electrons transferred,  $F$  = Faraday's Constant (96485 C/mol),  $A$  = working electrode area (in  $cm^2$ ),  $D_o$  diffusion coefficient (in  $cm^2/s$ ),  $C_o$  = concentration (in  $mol/cm^3$ ) and  $t$  = time (in s).

In general, the working electrode is first held at a constant potential, where no reaction occurs and thus, no charge (current) passes. Then, the cell potential is rapidly changed (stepped) to a value that induces faradaic current. The current corresponds to electrons gained or lost during electrolysis (oxidation or reduction). The value of potential at which the electrolysis occurs is specific to the chemical system under study. For each mole of  $\beta$ -D-glucose in a sample, oxidation of the GOx enzyme produces one mole of gluconolactone and one mole of  $H_2O_2$ .

Electrochemically, the  $H_2O_2$  can undergo a two electron oxidation to form  $O_2$  and  $H^+$  (see: Equation 5).  $H_2O_2$  can be detected at a platinum electrode via oxidation to  $O_2$ . Therefore, after the GOx has catalyzed the conversion of  $\beta$ -D-glucose, the  $H_2O_2$  produced will be electrochemically oxidized. The extent of oxidation (magnitude of current) will be measured by chronoamperometry and compared against a calibration of several standard solutions to determine the unknown concentration of  $\beta$ -D-glucose in the sample.



As evident from the electrochemical half-reaction (see: Equation 5),  $H_2O_2$  is oxidized to  $O_2$  between 600 to 700 mV vs. an Ag/AgCl reference electrode. To oxidize hydrogen peroxide produced by the action of glucose oxidase, the cell potential is stepped from an initial resting potential (where neither reaction occurs nor electrons flow) to a potential more positive than 600 to 700 mV. At 900 mV, any  $H_2O_2$  near the electrode surface will be oxidized. For each mole of  $H_2O_2$  oxidized, two electrons will flow into the external circuit (measured as current in the potentiostat). After a specified amount of time, current is measured and verified against a calibration curve to determine the concentration of  $\beta$ -D-glucose in the sample.  $\beta$ -D-

glucose is converted to gluconolactone and peroxide by glucose oxidase (see: Figure 5). The peroxide generated is oxidized at the platinum electrode (slant lines). Current is monitored and related to calibration.

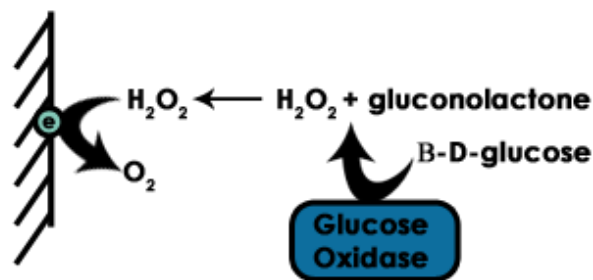


Figure 5. Electrode Reaction for Glucose Detection.

## 1.7 Electrochemical to Biochemical Data Translation

In this experiment, you measure the rate of enzymatic reaction through electrochemical oxidation of the enzymatic byproduct, which is an indirect measure of enzyme turnover. Thus, you must translate the electrochemical rate (current vs. time) to reaction rate (concentration vs. time). Algebraically rearranging the Cottrell equation provides a fairly simple path by which to accomplish this in a spreadsheet, such as Microsoft® Excel (see: Equation 6).

$$\frac{i(t)\pi^{1/2}}{nFAD_o^{1/2}t^{1/2}} = \frac{C_o^*}{t} = \bar{v} \quad (6)$$

## 1.8 Electrochemical Instrumentation

There are two main components of the electrochemical instrumentation used in this experiment: the potentiostat and the electrodes.

- WaveNow™ USB Potentiostat with AfterMath™ Data Organizer Software
- Compact Voltammetry Cell
- Patterned Platinum Electrodes

### 1.8.1 Electrodes

Electrodes used in this experiment are called the working, counter, and reference electrodes. The electrochemical reaction of interest occurs at the working electrode. The working electrode is an inert material that is a sink for electron transfer. The reference electrode has its own fixed redox potential and serves as a standard reference for cell potential. Current should not pass through a reference electrode, thus the counter electrode (or auxiliary electrode) is the third electrode in the system. Current passes through

the counter electrode to balance a change in cell potential due to the reaction at the working electrode.

For this experiment, the platinum screen-printed electrode conveniently contains all three electrodes (see: Figure 6).

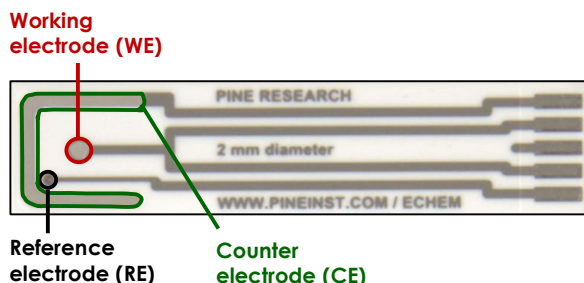


Figure 6. Pine Research Screen-Printed Electrode.


## Chemicals

For all solutions, consult with your instructor. Some may have been prepared in advance. For other solutions, they may be prepared from a higher concentration stock solution that has been provided. The volumes listed are for one student or one group of students working together.

The water used for these solutions should be distilled and deionized. Such water typically has a resistivity of  $18\text{ M}\Omega \cdot \text{cm}$ .

### 1.9 1.0 M Sodium Acetate Buffer

Sodium acetate is abbreviated *NaOAc*. Calculate the appropriate mass of *NaOAc* to prepare 100 mL of a 1.0 M solution. Add this mass to a 100 mL volumetric flask and add 4.2 mL concentrated hydrochloric acid (36.5% – 38% v/v) and about 70 mL distilled water. Swirl to completely dissolve, then dilute to the mark with distilled water. Label this solution as 1M *NaOAc* Buffer.



**CAUTION:**


**Concentrated hydrochloric acid is highly corrosive, causes severe burns to eyes / skin / respiratory tract. Reaction with water produces excessive heat (exothermic). Use all appropriate personal protective equipment.**

### 1.10 50 mM Sodium Acetate Buffer

Prepare 500 mL of a 50 mM *NaOAc* buffer by diluting the 1.0 M *NaOAc* buffer previously prepared (HINT:  $M_1V_1 = M_2V_2$ ). Label this solution as 50 mM *NaOAc* Buffer.

### 1.11 100 IU/mL Glucose Oxidase Solution

Dissolve 50 kU (one thousand IU) of glucose oxidase in 500 mL of the previously prepared 50 mM *NaOAc* Buffer. Stir gently with a glass rod to avoid creating bubbles. Keep refrigerated for storage and warm to room temperature before use. Label this solution as 100 IU/mL Glucose Oxidase Stock.




**INFO:**

**Enzyme concentrations are often expressed in units of IU (International Units). One IU is the amount of enzyme that will produce 1 μmol of product per minute, (or that will consume 1 μmol of reactant per minute). Prepare this solution based on the concentration stated on the bottle.**

### 1.12 100 mM Glucose Stock Solution

Calculate the appropriate mass of D-(+)-glucose (MW = 180.16 g/mol) to prepare 100 mL of a 100 mM solution. Add this mass to a 100 mL volumetric flask and add about 75 mL of the 50 mM *NaOAc* Buffer and swirl to dissolve completely. Then, dilute to the mark and label as 100 mM Glucose Stock Solution.



**INFO:**

**Prepare this solution at least 12 hours in advance. This allows mutarotation of the α- and β- optical isomers of glucose to reach equilibrium. Remember, only β-D-glucose is a substrate for the enzyme glucose oxidase.**

### 1.13 Beverage Sample Stock Solution

Prepare a stock beverage sample. Select any glucose containing beverage. Beverage selection may affect results. Some sweetened beverages contain little glucose despite having a high "sugars" listed on the nutritional label. Record the nutritional label data and ingredients list for each beverage sample into a notebook.

If the beverage is carbonated, decarbonate it prior to use (i.e. remove all gas bubbles). This is accomplished by placing the soft drink in a plastic bottle and sealing the cap, shaking for 20-25 seconds, and then slowly

opening the cap to release  $CO_2$ . Repeat this procedure until no observable carbonation is present.

Mix 0.8 mL pure beverage with 0.5 mL 1M NaOAc Buffer and 8.7 mL water. Label this solution as Beverage Stock Solution.

### 1.14 Beverage Sample Test Solution

Test beverage samples should be analyzed immediately after preparation. The preparation for the beverage solution tested will be given in the experimental section. Record nutritional information label content and any sugars listed in the ingredients label for any beverage tested.

### 1.15 Glucose Calibration Standards

Prepare a series of at least five glucose standards. Make these standards from the previously prepared 100 mM Glucose Stock Solution and 50 mM NaOAc Buffer (See: Table 1). It will be easiest to prepare each sample in separate 20 mL disposable vials (e.g. scintillation vials, which fit the compact voltammetry cell cap). Properly label each standard prepared.

Standard #	[Glucose] (mM)	100 mM Glucose Stock (mL)	50 mM NaOAc Buffer (mL)
1	0	0.0	5.0
2	5	0.5	4.5
3	10	1.0	4.0
4	15	1.5	3.5
5	20	2.0	3.0

Table 1. Glucose Standard Preparations.

## Experimental

In this lab, the concentration of glucose in a beverage sample will be obtained by oxidizing an enzymatic byproduct of glucose oxidase, hydrogen peroxide.

After you have made the solutions, proceed to the instrumental setup. The analysis portion involves construction of a calibration curve from glucose standards and the analysis of a beverage sample as compared to the calibration. Read through the experimental section completely before proceeding.

### 1.16 Setup

The following instrumentation supplies will be needed to perform this experiment: the Pine Research Instrumentation WaveNow potentiostat, USB cable, platinum screen printed electrode, compact voltammetry cell, and the solutions previously prepared. A stopwatch must also be used to

accurately ensure all samples have reacted with enzyme for the same time.

1. Turn on the potentiostat and connect it to a personal computer using a USB cable. Use the AfterMath™ software application to control the potentiostat (see: Figure 7).
2. Connect the cell cable to the potentiostat using the end terminated with an HD-15 connector. The other end of the cable will be a mini-USB-style connector.
3. Obtain one platinum patterned electrode. This patterned electrode has a working electrode in the center which has a 2.0 mm diameter (see: Figure 6). Compute the surface area of the working electrode (in  $cm^2$ ) and record the result.
4. From the Experiments menu in AfterMath, select "Chronoamperometry (CA)..." Notice, this will create a new Experiment Node in the archive structure on the left panel of the screen (e.g. CA Parameters).
5. Select the appropriate potentiostat from the drop down menu at the top of the parameter entry screen (e.g. Pine WaveNow).
6. Perform a CA experiment consisting of the following parameters: 300 mV induction period potential for 2 s; 900 mV forward step potential for 29 s; 900 mV relaxation period potential for 0 s; initial current range = 200  $\mu A$  with Autorange Off; and 2900 intervals (see: Figure 7).

### 1.17 Glucose Calibration

The enzyme-glucose reaction is kinetically-limited; therefore, it is important to prepare and analyze each standard before moving on to another.

Work systematically and in sequence, from lowest to highest concentration of glucose. Analyze each of at least five standard glucose samples, given in Table 1, in the following manner:

1. Rinse the electrode with DI water and dab dry with a delicate wipe. Set aside.
2. Obtain a standard sample (5 mL of solution in a 20 mL threaded vial).
3. Add the 5 mL Glucose Oxidase Solution to the test solution. Shake well, and immediately start a timer.
4. Allow the enzyme to react for 5 minutes.
5. After 5 minutes, insert the platinum patterned electrode into the hand grip (see: Figure 8).

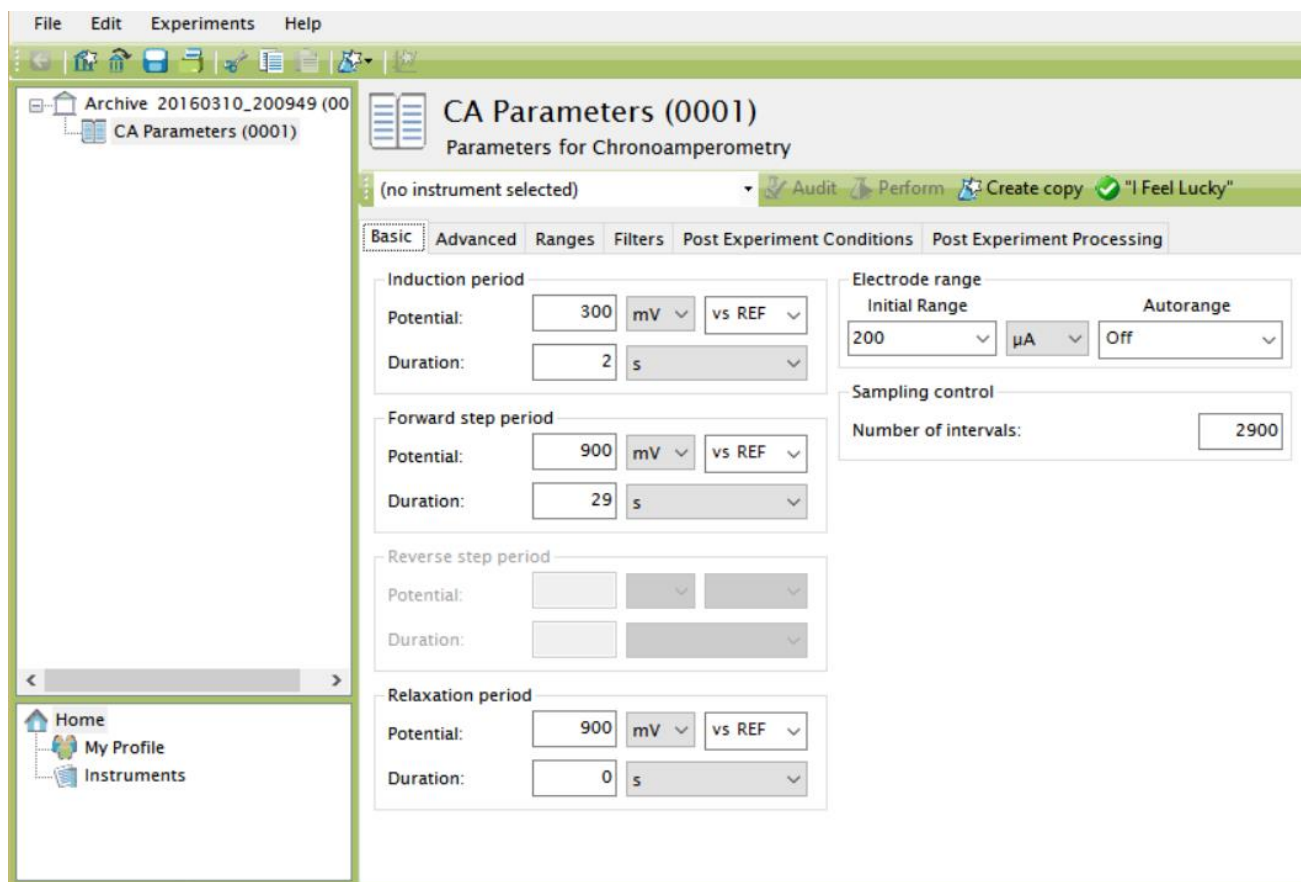


Figure 7. Chronoamperometry Experimental Parameters in AfterMath.

6. Insert the hand grip, which is connected to the electrode, into the cap (see: Figure 8).
7. Connect the USB-style cell cable to the grip. The correct connector is to the LEFT of the electrode face of the patterned electrode card (see: Figure 8).
8. In AfterMath, highlight the CA Parameters icon in the tree structure on the left (that you created above). Click the "Perform" button to begin the chronoamperometry experiment.
9. After the experiment completes, right click the experiment node in the left panel of AfterMath (e.g. CA Experiment (00##)) and rename it to indicate the glucose concentration used.
10. Remove the grip and cap from the vial. Dispose of the waste appropriately. Repeat these steps for each calibration standard until you have obtained data for all five standards.

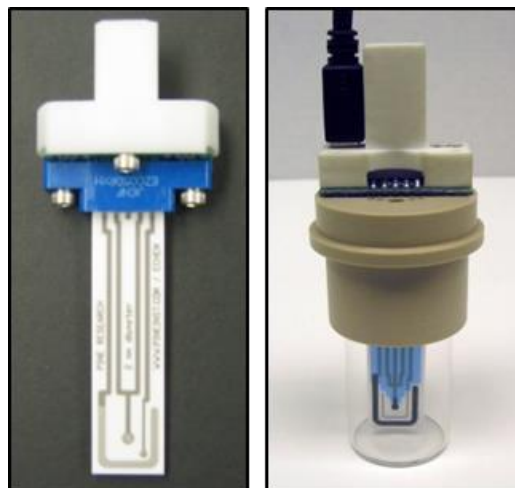


Figure 8. Assembly of the Compact Voltammetry Cell.

## 1.18 Beverage Analysis

To a clean 20 mL threaded vial, add 5 mL Beverage Sample Stock Solution and 5 mL of the Glucose Oxidase Stock. Mix well, and start a timer.

Allow the enzyme to react for 5 minutes. Perform Chronoamperometry on the sample as with the glucose calibration. The measurement can be made in triplicate for statistical validation of the data.

### Data Analysis

The resultant data from a chronoamperometry experiment, called a chronoamperogram, is a plot of current vs. time. The current arises from the electrochemical oxidation of  $H_2O_2$  (see: Equation 5 and Figure 5). From Equation 6, the measured current is proportional to the concentration of peroxide. From the overall enzyme reaction (see: Equation 5), one mole of glucose is oxidized for every mole of peroxide produced and subsequently electrochemically oxidized.

To maintain assumptions for the Michaelis-Menten model of enzyme kinetics (discussed in most biochemistry textbooks [5]), a common enzyme assay is to vary substrate concentration and measure the reaction rate. In this lab, current is a direct measure of the kinetic rate (the chronoamperogram gives current as a function of time for the oxidation of hydrogen peroxide, which is in molar equivalency with substrate).

## 1.19 Determine Cottrell Current at 10s

In addition to recording data in your notebook, open a spreadsheet (such as Microsoft® Excel) and create an organized system to analyze data.

For each glucose standard, review the corresponding chronoamperogram in AfterMath.

1. Expand the appropriate experiment node and select the "Current" node (see: Figure 9).
2. In the graphical data window in the right panel of AfterMath, right click the data trace. From the menu, select Add tool and then Crosshair.
3. A large plus sign will lock to the data trace. The crosshair tool will report the  $x$  and  $y$  values for a certain point on the data, as time ( $x$ -intercept), current ( $y$ -intercept). With the mouse, move the crosshair to the data point at  $t = 10$  seconds. You may have to use the plot tools (such as zoom in) to more easily select exactly 10 seconds.
4. Record the current at 10 seconds.
5. Repeat this process for each glucose standard.

In the spreadsheet, enter concentration in one column and current at 10 seconds in the next.

## 1.20 Data Transformation

As described previously (see: Section 1.7), convert current to reaction rate (see: Equation 6). HINT: current is in Amperes in the Cottrell Equation, and  $C_0$  is a concentration in units  $mol/cm^3$ . Use formulas to avoid simple mathematics errors.

## 1.21 Create Michaelis-Menten Plot

Create a plot of reaction rate ( $y$  – axis) vs. glucose concentration ( $x$  – axis). Plot the data as a series of points without a line connecting points (see: Figure 10).

As discussed in the Biochemistry Background, the data in the calibration plot should not be linear across the range tested. Lack of linearity is due to the two limiting factors of the glucose oxidase enzyme system; 1) the amount of substrate ( $\beta$ -D-glucose) available and 2) the maximum turnover rate of the glucose oxidase enzyme.

## 1.22 Create Line-Burkweaver Plot

Transform the data used in the previous plot to the Line-Burkweaver (double reciprocal) form. Plot  $1/\bar{v}$  on the  $y$  – axis and  $1/[S]$  on the  $x$  – axis. The data should now appear linear. Perform a linear regression analysis and display the equation of the best-fit line (see: Figure 11). Note the slope and intercept and consider their proper units.

## 1.23 Determine $\beta$ -D Glucose Concentration from Analysis in Beverage

Determine the peroxide current for each beverage tested, as discussed previously (see: Sections 1.19 and 1.20). Determine  $\beta$ -D-Glucose concentration in each beverage by using the calibration curve in linear format. Report the concentration (HINT: account for all dilutions).

## 1.24 Determine Kinetic Parameters

From the slope and intercept of the linear regression performed on the double reciprocal plot, determine  $V_m$  and  $K_m$  and record these values (Hint: solve as a system of two equations with two unknowns).

$$\frac{1}{\bar{v}} = \frac{K_m}{V_m[S]} + \frac{1}{V_m} \quad (7)$$



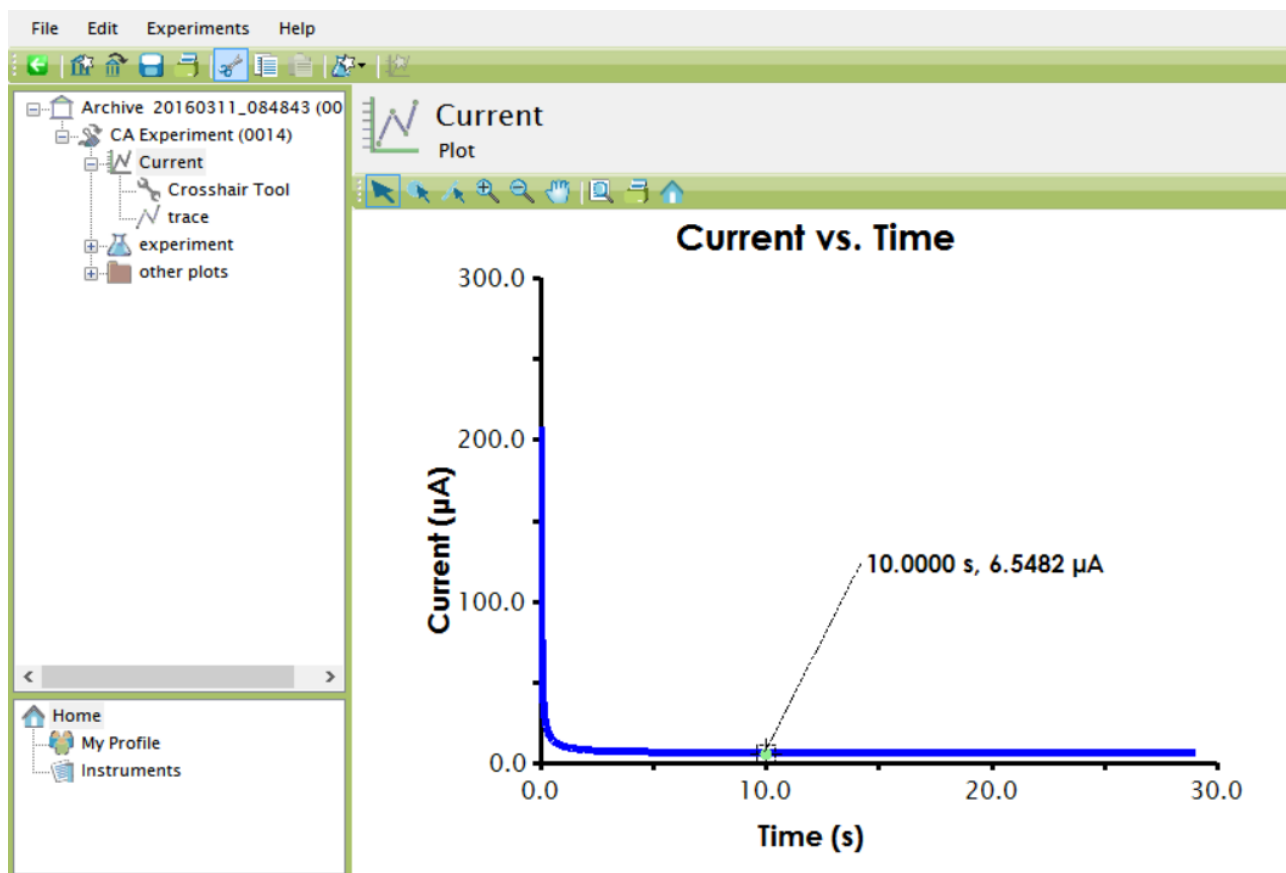


Figure 9. Determination of Current at 10s in AfterMath.

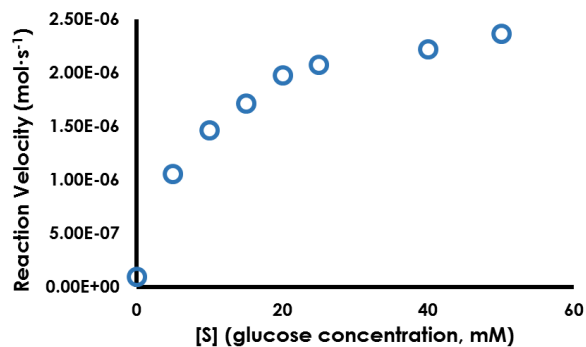


Figure 10. Michaelis-Menten Plot for Glucose Oxidase.

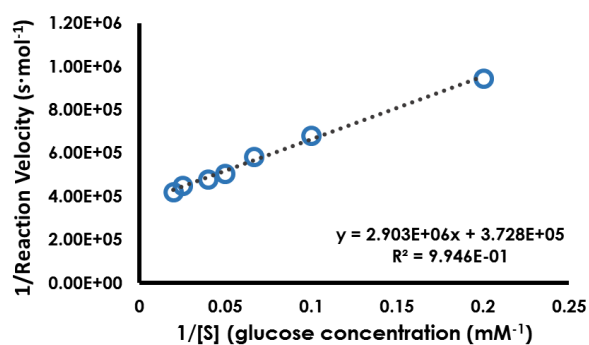


Figure 11. Lineweaver-Burke (Double Reciprocal) Plot for Glucose Oxidase.

## Report Questions

1. Compare glucose concentration as determined by this method to the nutritional label on the beverage. Do the values agree? Why or why not? Are there clues in the ingredient list that support your observations?
2. If a current measurement by chronoamperometry was taken immediately after glucose oxidase was added to the sample, how would that affect the concentration measured by chronoamperometry?
3. Why are all solutions in this lab in a buffered *NaOAc* solution? (Hint: consider general properties of enzymes).
4. How should current vary with peroxide oxidation?
5. This experiment used a 2 mm disk electrode. If a working electrode with a 5 mm disk was used instead for the glucose calibration, discuss the change expected in current response. What is the proportionality between electrode area and current?
6. State the values of  $V_m$  and  $K_m$ , with the appropriate units. Show the calculation of  $V_m$  and  $K_m$  from the linear calibration data.

## References

1. Food and Drug Administration. Nutrition Labeling of Foods, 21 CFR §101, 2008 Edition. URL: <http://tinyurl.com/FDA-Food-Labeling>.
2. Ventura, E.E.; Davis, J.N.; and Goran, M.I. Sugared Content of Popular Sweetened Beverages Based on Objective Laboratory Analysis: Focus on Fructose Content. *Obesity*, **2010**, *10*, 1.
3. Hanover, L.M.; and White, J.S. Manufacturing, composition, and application of fructose. *J. Clin. Nutr.* **1993**, *58*, 724.
4. Perles, C. and Volpe, P.L.O. A Simple Laboratory Experiment to Determine the Kinetics of Mutarotation of D-Glucose Using a Blood Glucose Meter. *J. Chem. Ed.* **2008**, *85*, 686.
5. Lehninger, A.L.; Nelson, D.L.; Cox, M.M. *Lehninger principles of biochemistry*. **2005**, New York: W.H. Freeman.
6. Gooding, J.J.; Yang, W.; and Situmorang, M. Bioanalytical Experiments for Undergraduate Monitoring Glucose in Sports Drinks. *J. Chem. Ed.* **2001**, *78*, 788.

## Reprints

Reprints of this document are available upon request from:

Pine Research Instrumentation  
2741 Campus Walk Avenue  
Building 100  
Durham, NC 27705  
USA

<http://www.pineresearch.com>

Sales e-mail: [pinewire@pineinst.com](mailto:pinewire@pineinst.com)

## Instructor Resources

Qualified instructors may contact us by email for access to the instructor's guide for this laboratory exercise.