

EXODUS TREK

USER MANUAL



Thanks!

First and foremost... If you're reading this, you bought the Trek, which means that you've supported us in our mission to build a better hunting industry company! We want to give you an extremely gracious and humble "thank you" for your business! In this manual, we're going to go over everything you need to know to get the most out of your camera for many years to come.

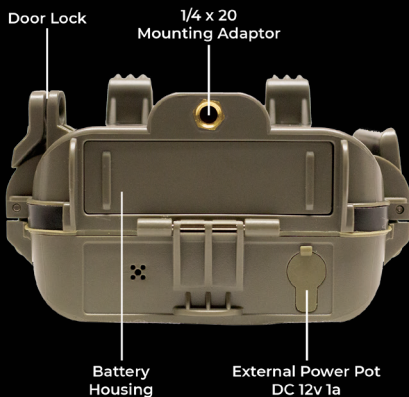
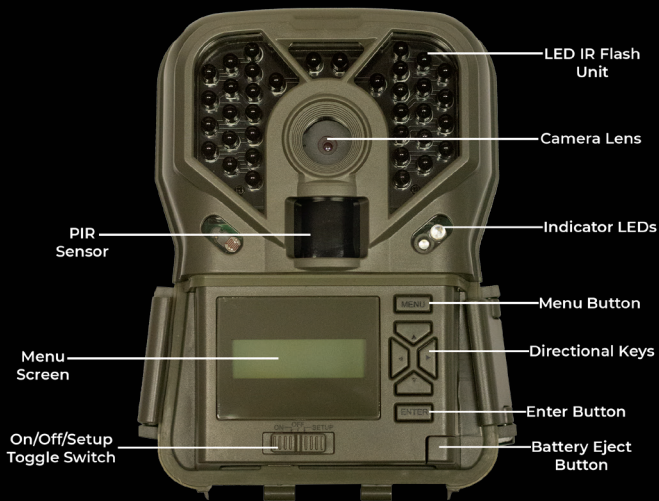
TABLE OF CONTENTS

3.....	Camera Overview
4.....	Button Functionality and Navigation
4-5.....	A Quick Setup Reference
5-6.....	Menu Overview
7-9.....	Map of Menu
8-12.....	Menu Settings Overview
12.....	Retrieving and Viewing Images
13-14.....	The Exodus Warranty
14-15.....	Battery and SD Card Information

CONTACTING EXODUS– If you ever need anything at all, you can **contact us by texting the word "Call" to 330-400-3034**. You'll get a call back from someone that knows the camera inside and out. In normal business hours (Mon. – Fri. 9AM-6PM EST), you can expect a call back within 5 minutes.

Don't hesitate to reach us outside of those times, we are always available!

OVERVIEW



BUTTON FUNCTIONALITY/NAVIGATION

On/Off/Setup Slider Switch:

- On sets the camera into the startup countdown.
- Off shuts the camera down.
- Setup turns the camera into setup/program.
This is where you access the user menu.

Menu – Opens the camera menu.

Directional keys – Used for navigating the menu.

Enter – Used as a selection or “select” key in menu.

A QUICK SETUP REFERENCE

1. Open the camera door and press the battery tray release button in the bottom right hand corner. Install 8 AA batteries (Lithium Recommended). Re-insert the battery tray until you hear it “click” into place.
2. Insert SD card until you hear a slight click as it locks into place.
3. Turn the camera power switch to the “Setup” position. Press the Menu button. Hit the up directional key one time to the “format” option. Hit the Enter button, press down directional key once so that

yes is flashing, then press enter to format your SD card. Turn the camera off.

4. Pick a location and mount the camera via the included strap or a 3rd party mounting system. We recommend setting the camera up within 20'-25' of where you think the target will be. (For some of our ideas on camera setup locations, strategy, and method, visit our site at www.exodusoutdoorgear.com.)

5. When you are happy with the setup, slide the camera to the "On" position. The camera will start a 30 second count down, upon completion a red and blue indicator light will blink on right side of the camera when armed.

MENU OVERVIEW

To get to the menu, turn the power switch right to the "Setup" position. Once the camera powers on you will see the operating FW version listed on the single line LCD display, hit the "Menu" button in the top right hand side to open the user menu.

-To cycle through the Trek's menu options use the up/down direction keys.

-To change menu options press enter to select menu option shown on the screen so the option feature flashes.

-To change menu option feature use the directional keys. Press enter to select and save desired change.

MENU SETTINGS OVERVIEW

MODE

Photo | Video | Time Lapse | Hybrid

SETUP DATE

Day/Month/Year

SETUP TIME

00:00 AM/PM

PHOTO SIZE

2MP | 6MP | 8MP | 12MP

BURST COUNT

1-9 Photos

VIDEO SIZE

1280x720 30fps | 1920x1080 15fps

VIDEO LENGTH

10s-180s

TRIGGER DELAY

00min 05sec - 59min 59sec

TIME LAPSE

00min 05sec - 59min 59sec

TIME LAPSE PIR

ON | OFF

OPERATING START

06:00PM

OPERATING STOP

05:59PM

TIME STAMP

ON | OFF

TEMPERATURE

FAHRENHEIT | CELSIUS

CAMERA NAME

Up to 13 characters

SECURITY

4 numbers

LATITUDE

000.000000N

LONGITUDE

000.000000E

DEFAULT

YES | NO

FORMAT CARD

YES | NO

SW UPGRADE

YES | NO

MODE: Mode is the basic functionality you want the camera set to. There are four options to chose from.

PHOTO: In photo mode, the camera captures still images when it is activated by PIR sensor.

VIDEO: In video mode, the camera captures videos when it is activated by PIR sensor.

TIME LAPSE: In time lapse mode the camera will take a series of photos at a programmed specified interval throughout the day. As in all Exodus Trail Cameras, you also have the ability to leave the PIR sensor on to capture images in between specified time lapse intervals.

HYBRID MODE: Hybrid mode utilizes both video and photo mode by capturing a photo followed by a video when it is activated by PIR sensor.

SETUP DATE: In this menu option, you can set the camera's internal calendar/info strip date. It is entered in the format of month/day/year.

SETUP TIME: In this menu option, you can set the camera's internal clock/info strip time. It is entered in the AM/PM 12 hour format.

PHOTO SIZE: The image size section allows you to set the resolution of the photos the camera takes. You can choose from 2MP, 6MP, 8MP, and 12MP. The MP stands for MegaPixels.

BURST COUNT: This is the photo burst selection. You can set the camera to take between 1 and 9 photos per trigger event while in photo mode.

VIDEO SIZE: Choose the size of the videos you want the camera to take in video mode. There are two options, 1280x 720 30FPS or 1920x1080 15FPS.

VIDEO LENGTH: Choose the length of the videos you want the camera to take in video mode. You can pick any option between 10 and 180 seconds.

TRIGGER DELAY: This option allows you to set the delay between triggers. You can customize the delay anywhere from 5 seconds to 59 minutes and 59 seconds.

TIME LAPSE: In this option you can setup the interval between photos that you want the camera to take in time lapse mode. You can customize intervals from 5 seconds to 59 minutes and 59 seconds.

TIME LAPSE PIR: In this option you can turn the PIR sensor on or off inside time lapse mode.

OPERATING START: Set the operating starting hour of the camera in this section. As default the camera comes setup to start at 08:01 AM.

OPERATING STOP: Set the operating stop hour of the camera in this section. As default the camera comes setup to stop at 08:00 AM. NOTE: On default settings the camera is programmed to run 24 hours.

TIME STAMP: This is the info strip at the bottom of each photo/video. In this section you can either turn the strip on or off.

TEMPERATURE: This menu option gives you the ability to change from Celsius to Fahrenheit. This data is shown on the info strip at the bottom of each photo/video.

CAMERA NAME: Chose a name for your camera between 1-13 characters. This will be included in the info strip at the bottom of each photo/video.

SECURITY ENABLE: You can setup a 4 digit passcode that will be required every time that you get back into your camera. You can select on or off, when you select on you will be required to enter the desired code.

LONGITUDE/LATTITUDE: In this option, you can enter the coordinates of your camera and it will enable GPS geotagging of your photos.

DEFAULT SET: Selecting "yes" will reset the camera back to the factory default settings.

FORMAT: Formatting is recommended everytime that you insert a SD card into the camera. It gets the card setup for use inside the camera, however it will erase any images already stored on the card.

SW UPGRADE: In this option will only appear when there is a firmware version properly installed to a SD card to perform an update. If you are trying to perform an update and this option does not automatic show at the end of the menu options, the firmware is not properly installed on the SD card.

RETRIEVING PICTURES

When you're ready to start retrieving your photos, there are a couple of options. If you're a seasoned trail camera user, these will likely be familiar to you. If not, here's a quick reference guide:

REMOVING THE SD CARD: Remove the SD card from the camera. IT IS IMPORTANT TO NOTE THAT YOU MUST TURN THE CAMERA OFF BEFORE REMOVING THE CARD. Once you remove the card you can insert it into an

SD card reader on a laptop, tablet, or field viewer and download the pictures.

USB Download: You can plug the camera into your computer via USB cable provided and download the pictures directly from the camera.

THE EXODUS WARRANTY

One of the things that we are most proud of here at Exodus is our 5 year fully covered warranty. Basically, if your camera stops working under normal use in the first 5 years, we will replace it absolutely free of charge. On top of that, if it is stolen or accidentally damaged within the first 5 years, we will give you a new camera (one per purchase) at 50% off the retail price.

REGISTERING YOUR WARRANTY:

Inside the packaging of your camera, you received a warranty registration card with detailed instructions. Your camera must be registered within the first 30 days of purchase for the warranty to be valid. We can not offer exceptions to this policy.

To make a warranty claim:

1. Contact us via our customer support number OR email info@exodusoutdoorgear.com

2. We'll send you a return-shipping box.
3. Once we receive the camera and verify the problem is covered, we'll ship you a new one.

WARRANTY EXCLUSIONS

Our warranty fully covers the camera's operation under normal working conditions. However, it does not cover one or more of the following: incorrect installations such as abuse, alterations or modifications not performed by Exodus Outdoor Gear, poor handling, misuse, accidents, abnormal use, shock, power failures/surges, battery failure, lightning or weather related conditions. Warranty does not apply to any product or part thereof where the original serial number has been altered, modified, defaced or removed. This warranty does not cover cosmetic wear and depreciation, and does not cover damage or loss as a result of transportation of the products. However, most of this is covered by our 5-yr theft / accidental damage policy.

You can read the entire Exodus warranty policy and theft/accidental damage replacement policy at www.exodusoutdoorgear.com/warranty-policy

BATTERY & SD CARD INFORMATION

Throughout hundreds of hours of testing and development of the our cameras, we have come to the conclusion that Energizer Lithium AA Batteries are the most dependable battery option on the market for our cameras, and likely all trail cameras that require AAs. The cost compared to alkaline batteries is roughly 2.5X as much at the time of this writing. However, you will be able to capture at least 2 to 2.5X as many pictures. Lithium batteries are unaffected by the cold down to -30F and they will run consistently until they completely stop, whereas alkaline batteries will not typically work well at temperatures under 10F and will start to slow down (causing issues for the camera) as they reach the 50% mark of their life cycle.

The camera is designed for both Alkaline and Lithium Batteries. Some rechargeable batteries will work, but they widely vary and in size and voltage and we ask that you remain cautious and never use a battery over 1.7V in the camera. Battery malfunction is one item that is not covered in our warranty, although it is covered in our theft/accidental damage replacement policy.

For external batteries: The Trek is compatible with a 12v/1amp external power source. We ask that customers remain very cautious about potential options and make sure that the specifications match the above. Feel free to contact us at any time that you have questions.

SD Card Requirements: The Trek will work with all major American SD card brands. The maximum size is 32GB and we recommend a class 4 or higher card for higher resolution photos and video. Again, just a reminder to never remove the SD card while the camera is on!

Learn more about Exodus
www.exodusoutdoorgear.com

 @ExodusOutdoorGear

 @ExodusTrailCameras

 @ExodusTrailCameras



EXODUS

FCC STATEMENTS:

Note: Changes and modifications not expressly approved by the party responsible could void the user's authority to operate this device.

This device complies with Part 15 of the FCC Rules. Operation is subject to the following two conditions: (1) This device may not cause harmful interference, and (2) this device must accept any interference received, including interference that may cause undesired operation.

NOTE: THE MANUFACTURER IS NOT RESPONSIBLE FOR ANY RADIO OR TV INTERFERENCE CAUSED BY UNAUTHORIZED MODIFICATIONS TO THIS EQUIPMENT. SUCH MODIFICATIONS COULD VOID THE USER'S AUTHORITY TO OPERATE THE EQUIPMENT.

NOTE: This device complies with the limits for a Class B digital device, pursuant to Part 15 of the FCC Rules. These limits are designed to provide reasonable protection against harmful interference in a residential installation. This device generates, uses, and can radiate radio frequency energy and, if not installed and used in accordance with the instructions, may cause harmful interference to radio communications. However, there is no guarantee that interference will not occur in a particular installation. If this device does cause harmful interference to radio or television reception, which can be determined by turning the equipment off and on, the user is encouraged to try to correct the interference by one or more of the following measures:

- Reorient or relocate the receiving antenna.
- Increase the separation between the equipment and receiver.
- Connect the equipment into an outlet on a circuit different from that to which the receiver is connected.
- Consult the dealer or an experienced radio/TV technician for help.