



# DCS™

Welcome to print & cut perfection



Introducing the next generation thermal transfer printer-cutter from Summa.

[www.SummaUSA.com](http://www.SummaUSA.com)

DCS™  
DCS<sub>SX</sub>™

**World Headquarters**  
10001 Lake City Way NE  
Seattle, WA 98125 USA

**Eastern US**  
222 Jubilee Drive  
Peabody, MA 01960 USA

**Europe**  
Rochesterlaan 6  
8470 Gistel, Belgium

Tel 206 527.1050  
Fax 206 527.1046

Tel 978 531.1991  
Fax 978 531.1993

Tel 32 59 270011  
Fax 32 59 270063



# Summa DC5: The ultimate all-in-one print and cut powerhouse.

Summa's new DC5 thermal transfer printer-cutter uses the most eco-friendly and maintenance-free print technology available. Spanning a history of nearly 30 years, thermal transfer revolutionized sign and label making long before the first desktop inkjet printers were developed. Yet even today, inkjet technology still cannot surpass the many wonderful advantages unique to thermal transfer printing. Perhaps most remarkable is the ability to produce instantly dry, installation ready graphics at a moment's notice with an outdoor durability of up to five years without lamination. And in the world of thermal transfer, the Summa DC5 reigns supreme. In fact, no other thermal transfer printer even comes close. Say goodbye to harmful fumes, clogged printheads, expensive daily upkeep, messy inks and complicated contour cutting routines. Say hello to the 7th generation thermal transfer printer from Summa.

The DC5 supports multiple printers via USB, enabling up to four DC Series machines to be connected to a single computer. Ethernet connectivity allows for advanced networking capability and fast data transmission speed over long distances so your graphics department can design and print independently. Internal state-of-the-art mainboard technology brings seven times faster data processing. An included printer control desktop program gives users the power to remotely change settings and save custom user configurations directly to the DC5. Most strikingly, the user interface has been completely redesigned to accommodate a vivid color touch sensitive display.

Summa DC Series is available in two sizes to suit any shop's space and needs. The 54-inch (137 cm) DC5 is the largest wide format thermal transfer printer and over four times the width of its nearest competitor. An eight-station ribbon changer eliminates the tedious ribbon changing process common on competing thermal transfer systems, allowing for unattended printing of up to 625 square feet (58 m<sup>2</sup>). Variable width media handling supports all of the most popular material widths. And with Summa's world-renowned cutting technology built-in, the DC5 is the most versatile printer in its class.

The Summa DC5sx is the more compact and affordable alternative to the larger DC5, yet retains all the top-of-the-line features of the DC5. Equipment durability, print quality, production speed, tracking and cutting features are identical to the Summa DC5, assuring the same spot-on accuracy Summa owners have come to expect.

The DC Series prints and cuts on a wide variety of media in 20-inch, 24-inch, 30-inch, 40-inch, 48-inch, or 54-inch widths (20-inch, 24-inch, and 30-inch on the DC5sx). Using the automatic tiling feature found in Summa's ColorControl™ 8 RIP software, images of unlimited size can be produced, from tiny labels to massive fleet graphics. The DC series includes power take-up rollers (a factory option on DC5sx), media baskets, 8 universal ribbon cassettes (5 for DC5sx), a full set of CMYK ribbons, and a 54-inch (137 cm) by 50 yard (45 meter) roll of high-performance Summa 3M vinyl (30-inch roll with DC5sx). Just plug your DC Series into a computer and get ready for some serious outdoor graphics production.

Create vibrant, die-cut and ready to install outdoor graphics that don't require lamination. Summa DC Series combines the industry's most durable and eco-friendly printing technology with the legendary performance of a Summa cutter. If you're in the market for a printer that produces a single graphic as effectively as long run graphics, offers odor-free, zero-maintenance printing that outlasts inkjet, and prints durable print-and-cut graphics instantly, Summa DC Series is the one printer that does it all.

## High-performance technology



### Faster Processor

Internal processing power blazes to the next level thanks to an entirely new, state-of-the-art mainboard featuring a seven times faster processor. Files RIP even faster and more jobs can be produced throughout the production day.



### Advanced USB

Multiple printer support is now available via USB, allowing for up to four DC Series printers to be connected to a single computer. Hardware enhancements have also yielded greater communication speed over USB, making files transfer faster than ever.



### Ethernet Connectivity

Ethernet connectivity opens up previously unexplored possibilities of networking, data transmission speed and communication potential. Multiple computers can control one or many units across a network with faster speed and over longer distances.



AND CUT



FEATURE



NO LAMINATE



SUPPORT

### Summa DC5sx

30 in. (76 cm) thermal transfer printer-cutter



### Summa DC5

54 in. (137 cm) thermal transfer printer-cutter





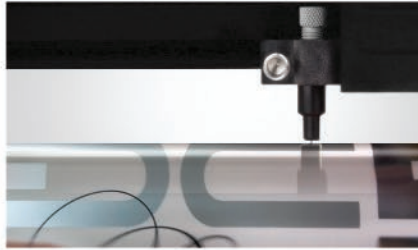
# Incredibly powerful and easy to use

## Vibrant Color Touchscreen



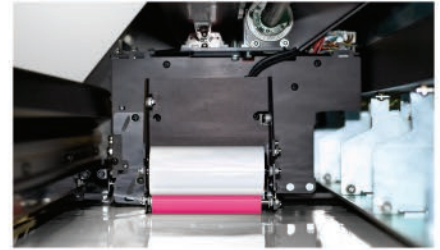
An intuitively redesigned menu system and full-color touch interface provide effortless navigation. Both easier to read and easier on the eyes, the sizable tactile screen is able to display large amounts of information at a glance.

## Integrated Cutting-Head



With razor accurate contour cutting built-in combined with industry-leading die cutting capabilities and advanced auto-calibration technology, no other machine makes it so easy to simply print, weed, and apply.

## Media Pre-Cleaning System



The OptiPrint™ Media Pre-Cleaning System is a unique process which removes dust and debris from the media surface prior to printing, ensuring optimal conditions for pristine quality graphics.



## Built-In Ribbon Changer

The DC5 holds up to 8 high-capacity SmartRibbon™ cassettes and the DC5sx holds up to 5 cassettes. Each cassette can accommodate any color from Summa's vast selection of ribbon choices and the DC Series intelligently identifies the ribbon color, location, and usage automatically.

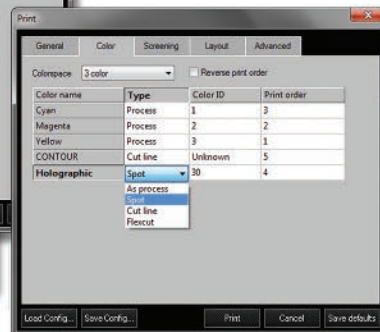
# Visually Striking Spot Colors

Tap into the extraordinary potential of thermal transfer printing with Summa's large assortment of vibrant eye-catching ribbon choices. Whether printing brilliant metallic finishes, vivid specialty hues, stunning holographic effects, or by mixing color combinations, the creative possibilities are simply endless.



## ColorControl Software

ColorControl™ 8, the latest version of Summa's exclusive PostScript® 3 compatible RIP software, is a cinch to use and many times faster than other RIPs. Brand new features added to ColorControl 8 are a sleekly redesigned user interface, multiple USB printer support, print queuing, Ethernet connectivity, spot color preview, and predefined print configurations.



## Industry leading RIP speeds

For more information on DC5 printer-cutters or to request a free sample kit, call Summa or visit [SummaUSA.com](http://SummaUSA.com)



# DCS Specifications

<b>Models</b>	DC5sx 30-inch (76 cm), DC5 54-inch (137 cm)
<b>Print Type</b>	Thermal Transfer
<b>Print Speed</b>	Printing (standard mode): 93 Ft <sup>2</sup> /hour (8.7 m <sup>2</sup> ) — Spot: 34 Ft <sup>2</sup> /hour (3.2 m <sup>2</sup> ) — Process CMY Printing (high-resolution mode): 67 Ft <sup>2</sup> /hour (6.2 m <sup>2</sup> ) — Spot: 25 Ft <sup>2</sup> /hour (2.3 m <sup>2</sup> ) — Process CMY Printing (double-density mode): 58 Ft <sup>2</sup> /hour (5.4 m <sup>2</sup> ) — Spot: 22 Ft <sup>2</sup> /hour (2.0 m <sup>2</sup> ) — Process CMY
<b>Cut Speed</b>	24 inches-per-second (600 mm/sec) max
<b>Method</b>	Printing: Thermal transfer, using outdoor-durable process and/or spot color resin ribbons, and; stunning mirror metallic ribbons (indoor use) Cutting: Drag-knife, using standard Summa D-Series blades
<b>Resolution</b>	Printing: 609 x 304 dpi (24 x 12 dpmm) maximum hardware; 609 x 609 apparent dpi (24 x 24 dpmm) software Cutting: 0.001" (0.025 mm), 0.005" (0.1 mm) selectable
<b>Media Width</b>	Variable width using 20-inch, 24-inch, 30-inch, 48-inch or 54-inch wide media (50cm – 137cm)
<b>Production Width</b>	DC5sx Printing: Up to 26.4 inches wide (67 cm) DC5sx Cutting: Up to 26.4 inches wide (67 cm) DC5 Printing: Up to 50.2 inches wide (127.5 cm) DC5 Cutting: Up to 50.2 inches wide (127.5 cm)
<b>Media Handling</b>	Motorized media supply rollers; built-in motorized media take-up system for the DC5 and is a factory upgrade option for the DC5sx
<b>Media Drive</b>	Summa OptiTrac™ active-steering drive using variable-position traction-feed pinch rollers
<b>Media Tracking</b>	Optical laser tracking system built-in
<b>Memory</b>	64 MB print processing RAM; 2 GB reprint storage
<b>Connectivity</b>	USB; Ethernet
<b>File Support</b>	EPS, PDF and all generic PostScript
<b>Power Requirements</b>	Connection: standard USA power outlet; Requirement: 100-240 Vac, 48-62 Hz, 85 VA max
<b>Operation Environment</b>	60°F to 80°F (15°C to 27°C), 30% to 75% relative humidity, non-condensing
<b>Dimensions</b>	DC5sx Shipping: 76.8" x 35" x 63" (195 x 88 x 160 cm) DC5sx (out of the box): 66.5" x 24.8" x 51.2" (169 x 63 x 130 cm) DC5 Shipping: 100.8" x 35" x 63" (256 x 88 x 160 cm) DC5 (out of the box): 90.6" x 24.8" x 51.2" (230 x 63 x 130 cm)
<b>Weight</b>	DC5sx Shipping: 639 Lbs (290 kg) DC5sx (out of the box): 430 Lbs (195 kg) DC5 Shipping: 800 Lbs (360 kg) DC5 (out of the box): 550 Lbs (250 kg)
<b>Accessories Included</b>	ColorControl RIP + Cut Software, Print & Cut plug-in for CorelDRAW and Illustrator, 5 SmartRibbon cassettes (DC5sx), 8 SmartRibbon cassettes (DC5), C, M, Y, and K Ribbons (1 each), 30" x 150' White 3M Vinyl (DC5sx), 54" x 150' White 3M Vinyl (DC5), Media Guide Flanges (set of 2), 1 OptiPrint™ Cleaning Roller Refill, Standard 36° Blade Holder, 2 Standard 36° Drag Blades, Cut-off Knife (with 1 spare blade), Media-Handling Gloves (1 pair), Printhead Cleaning Swabs, Power Cord (grounded 110v), USB Cable (15 foot), 1 Spare Fuse, CD w/ Manuals and Drivers, Quick Start Guide.
<b>Warranty</b>	Printer: 1 year parts and labor limited warranty Images: Up to 5 years, outdoors, without lamination; restrictions may apply for desert areas or exposure to harsh chemicals or abrasives.