

ETHERNET MEDIA CONVERTERS (FAST ETHERNET) FNP100FC

Fast Ethernet 10/100 Base-TX to 100 Base-FX Fiber Converter

General Description

FNP100FC series Ethernet media converters convert the copper Fast Ethernet 10/100Base-TX signal to 100Base-FX fiber signal and vice versa. The converters operate with 2 fibers with models supporting either multimode or singlemode fiber type. For singlemode type, different models cover different range of cable distances. This will allow the extension of the typical copper cable transmission distance of 100m to 2km - 100km over the fibers.



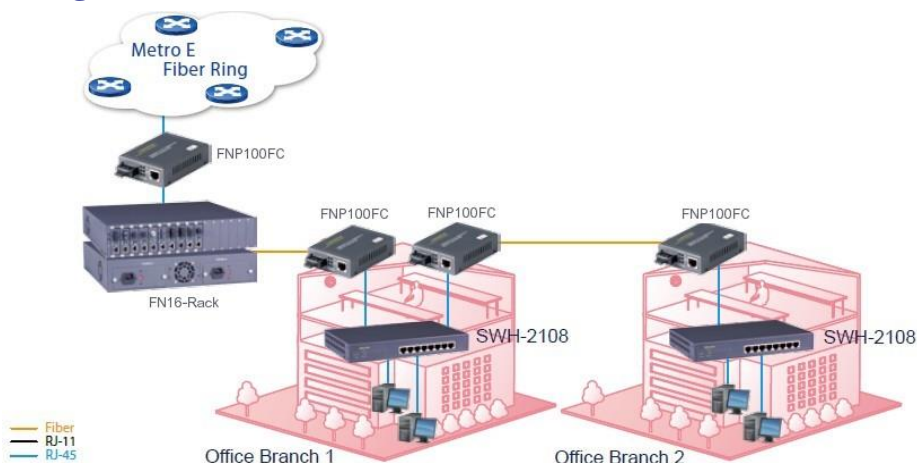
FNP100FC series media converters are fully compliant with IEEE 802.3 & 802.3u standards. With the built-in switch ASIC chip, it has turned FNP100FC series to become more like a two-port switch rather than like an ordinary converter. User can get many switch benefits such as segmentation, frame checking and error filtering. Additionally, Link Alarm feature enables administrator to monitor the fiber link more easily.

The installation and operation are simple and straightforward. The operation status can be monitored through a set of diagnostic LED indicators on the front panel.

Features

- “Plug & play” media converters which are easy to use and maintenance free.
- Support jumbo frame size 9K bytes to ease the network traffic loading
- When UTP or fiber port is down during operation, the other port will be automatically turned off to alert the user
- Support both stand alone and rack mount version

Application Diagram



* Please refer to the FN16-RACK-P1 and FN16-RACK-P2 data sheet for actual detail of the Rack Mount Chassis

FIBER CONVERTERS

Specifications

Type		Description
Standards		IEEE 802.3 10Base-T IEEE 802.3u 100Base-TX/FX IEEE 802.3x Flow Control
Interface	TP Port	10/100Base-TX RJ45 x 1
	F/O Port	100Base-FX x 1
LED		Power, FDX, Status, Speed, F/O Link/Act, TX Link/Act
Ethernet Features		Support 9K Bytes jumbo frame Support Flow Control
Power Requirement	Power adaptor	AC input: 100VAC~240VAC, 50~60Hz
		DC output: 5V, 1.6A
	Power Consumption	2.5W
H/W Specification		Store and forward switching mechanism Auto-Cross over for MDI/MDI-X in TP port Auto-Negotiation in TP port Full/Half Duplex Mode Operation
Environmental Condition	Operation	0°C ~ 50°C
	Storage Temperature:	-20°C ~ 60°C
	Humidity	5% ~ 90%, non-condensing
Dimension & Weight	Size	71 x 94 x 26 mm (WxDxH)
	Weight	0.6KG
EMC/Safety		FCC Class A, CE * For further reports, please contact us for update
Other Features		Support slide-in Converter Center

FIBER CONVERTERS

Ordering Information

10/100Base-TX to 100Base-FX Converter/Stand Alone or Rack Mount	
Model	Description
FNP100FC	Fast Ethernet 10/100Base-TX To 100Base-FX Switching Converter, 2 fibers (Multimode 2km/SC/19dB/1310nm)
FNP100FT	Fast Ethernet 10/100Base-TX To 100Base-FX Switching Converter, 2 fibers (Multimode 2km/ST/19dB/1310nm)
FNP100FC(SM-30)	Fast Ethernet 10/100Base-TX To 100Base-FX Switching Converter, 2 fibers (Singlemode 30km/SC/19dB/1310nm)
FNP100FC(SM-50)	Fast Ethernet 10/100Base-TX To 100Base-FX Switching Converter, 2 fibers (Singlemode 50km/SC/29dB/1310nm)
FNP100FC(SM-80)	Fast Ethernet 10/100Base-TX To 100Base-FX Switching Converter, 2 fibers (Singlemode 80km/SC/37dB/1310nm)
FNP100FC(SM-100)	Fast Ethernet 10/100Base-TX To 100Base-FX Switching Converter, 2 fibers (Singlemode 100km/SC/33dB/1550nm)

