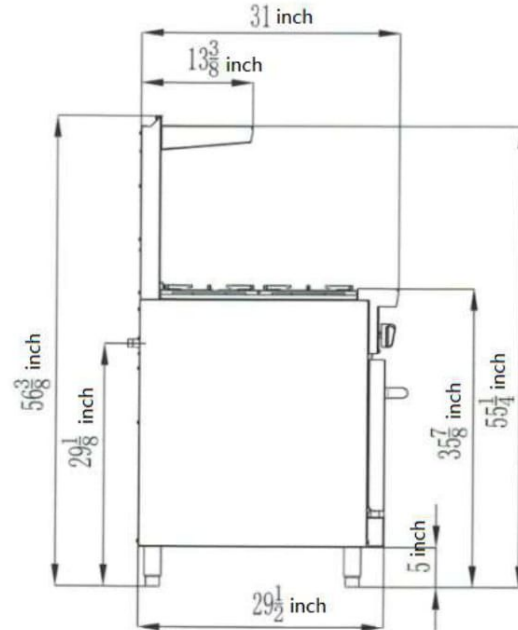


# SM-R36-2B-24G

**(36" Range - 2 Burner and 24" Griddle with Standard Oven)**



### Standard Features

- ◆ Durable stainless steel structure, corrosion-resistant and easy to clean
- ◆ Simple and reasonable structure, easy to manipulate and maintain
- ◆ Heavy duty burners, with a stable flame, standby pilots
- ◆ Heavy duty cast iron grates for a strong bearing performance
- ◆ Highly efficient stainless steel burner, standby pilots
- ◆ Thick grill, with excellent heat storage performance and even heating
- ◆ Self-reset high temperature limiting device
- ◆ Enamel inner bore, inner layer net, sanitary cleaning, high temperature resistant
- ◆ Removable door for easy cleaning
- ◆ Adjustable stainless steel legs



### Specifications

| Model No.     | Gas type | Intake-tube Pressure (in.W.C) | Ignition Way | Burner name | Nozzle No. | Per BTU B.T.U./h | Burners QTY (pes) | Total BTU B.T.U./h | Oven QTY | Oven size            | Griddle working area | Hot plates working area        | Valve Types | Temp. Control | Net Weight         | Exterior Size                                  |                   |
|---------------|----------|-------------------------------|--------------|-------------|------------|------------------|-------------------|--------------------|----------|----------------------|----------------------|--------------------------------|-------------|---------------|--------------------|--|-------------------|
| SM-R36-2B-24G | NG       | 5                             | Manually     | Hot plates  | NG45       | 25,000           | 2                 | 125,000            | 1        | 26 1/2*26*14<br>Inch | 24*20 5/8<br>Inch    | 2 Pes<br>11 4/5*11 4/5<br>Inch | Pilot light | Only The Oven | 463 LBS<br>210 KGS | 36*32-5/8*56-3/8<br>Inch<br>914*790*1433<br>mm |                   |
|               |          |                               |              | Griddle     | U-SHAPE    | NG42             | 27,000            |                    |          |                      |                      |                                |             |               |                    |  | 1                 |
|               |          |                               |              |             | I-SHAPE    | NG45             | 21,000            |                    |          |                      |                      |                                |             |               |                    |  | 1                 |
|               |          |                               |              | Oven        | NG39       | 27,000           | 1                 |                    |          |                      |                      |                                |             |               |                    |  | 673*660*356<br>mm |

**Nozzle size: NG45=2.1mm(0.083inch), NG42=2.3mm(0.09inch), NG39=2.5mm(0.098inch)**

**Pressure regulator use 4"-10"**



Conforms to ANSI STD Z83.11b-2009 (2011) Certified to CSA STD 1.8b-2009(2011)  
Conforms to NSF/ANSI STD. 4