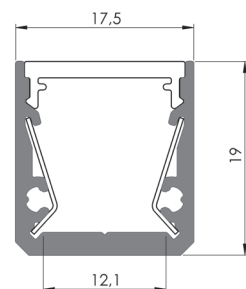


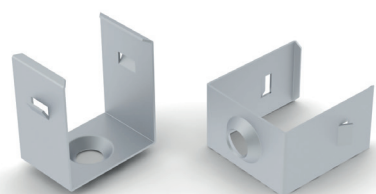
SL15 FL LED PROFILE

SL15 FL; 17,5 x 19 mm

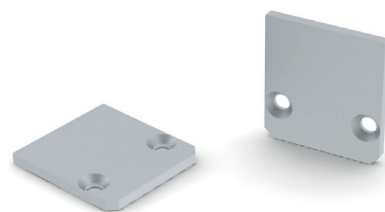
'Slim Line 15 FL' is a modified version of well-known, high-quality SL15 profile. The design has been improved in order to meet higher requirements and provide best efficiency. It can be equipped with 15 degree focusing lens in order to create narrow line of light. Our solution can be completed with polished aluminum reflectors providing high coefficient of reflectivity (> 95%), capable of increasing light output up to 20%. In addition to that our offer includes two flat surface – walk over safe diffusers (clear and opal). Together with them comes an option to use micro-prismatic film which will slide into the clear/opal standard diffuser (UGR>19). Frosted diffuser has a 'LEDs dots free' effect and provides a soft, uniform light on the whole surface. All the above improvements together with smooth exterior provides complete package and elegant luminaire that fulfill market needs.



AL-SL15 FL
AB-SL FL
AL-REF13-B60
6-DURIS



Mounting Brackets
MC-SL15 FL



Aluminum end caps
EC-SL15 FL

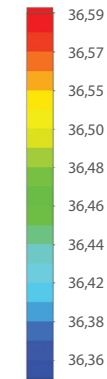
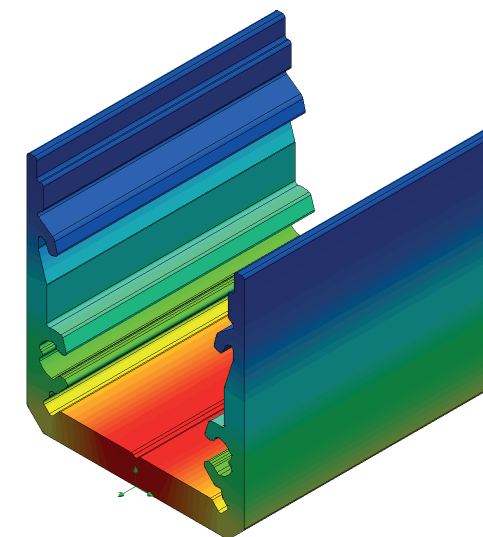
AL-SL15 FL
AB-SL FL
EC-SL15 FL



AB-SL15FL-L15 lens

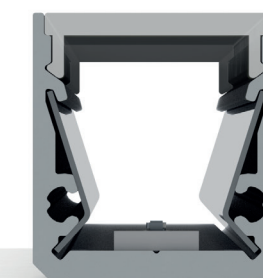


AL-SL15FL +
AB-SL15FL-L15 lens



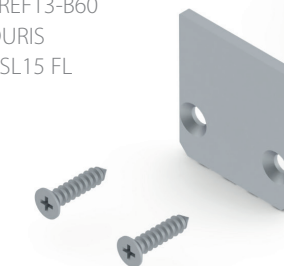
Temperature (Solid) [°C]

Ambient temperature : 25° C
Total power: 10 W/m (126 LEDs)
LED stripe: 6-DURIS
Installation mode for test purpose: surface



Cross section view of SL15 FL

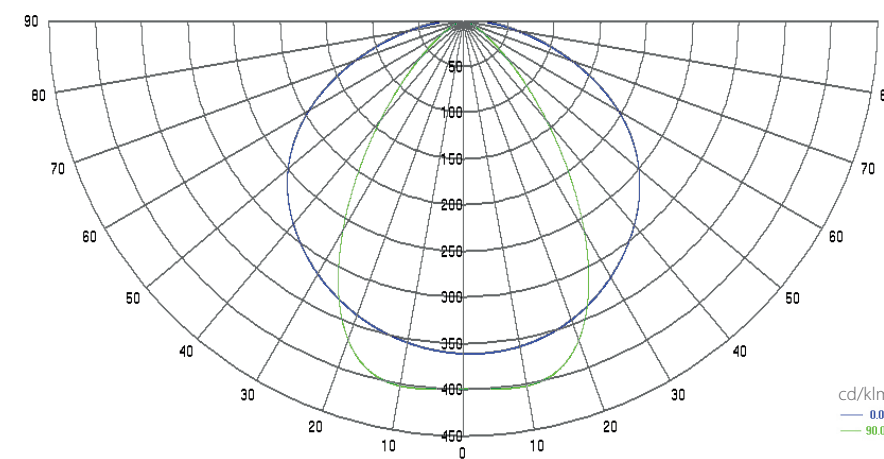
AL-SL15 FL
AB-SL FL
AL-REF13-B60
6-DURIS
EC-SL15 FL



AL-SL15 FL
AB-SL15FL-L15
6-DURIS

Polar Candela Distribution Plot Using Missed Rays

Light distribution diagram with AB-SL FL / with reflector



Light distribution diagram with AB-SL15FL-L15 / without reflector

