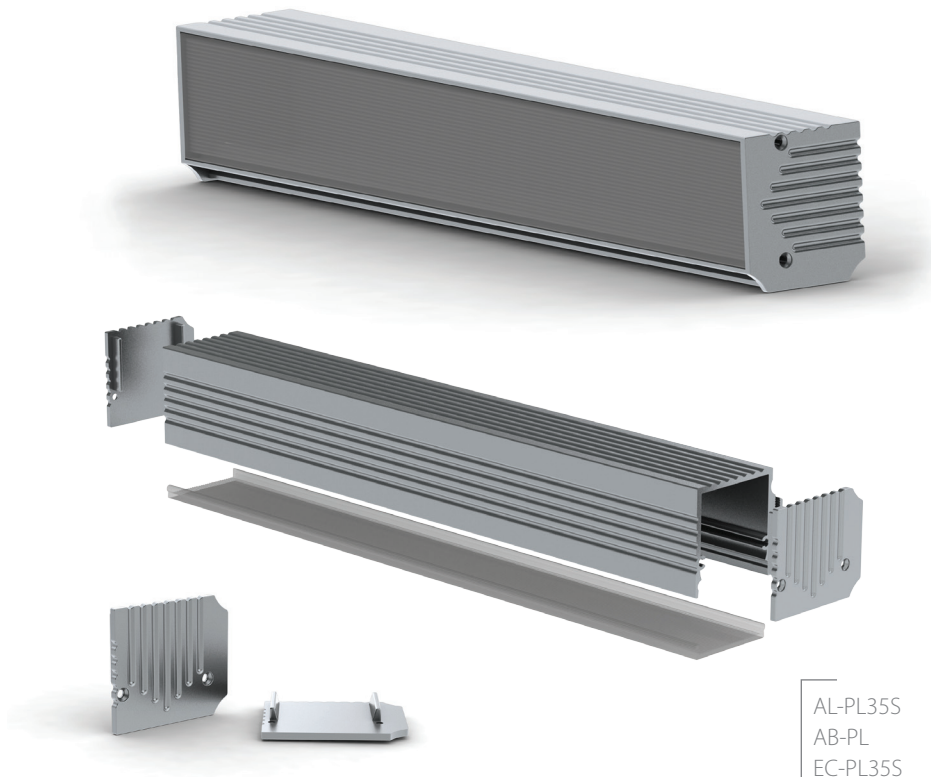
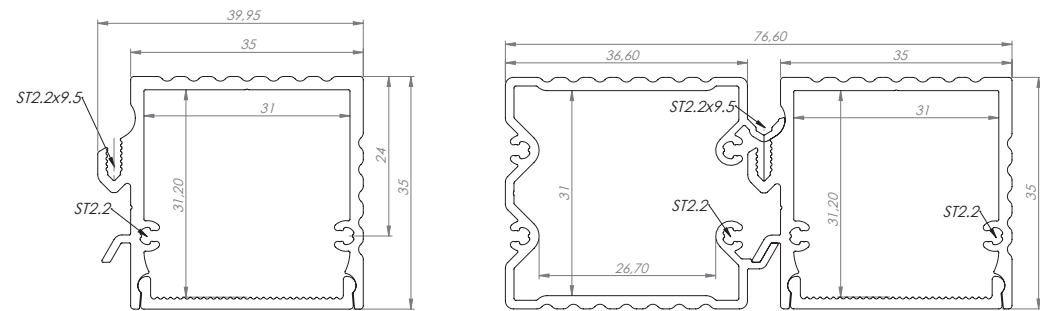


# PL35 ONE SIDE LIGHT OUTPUT

PL35S 76,6mm x 35mm with the power supplying hiding base

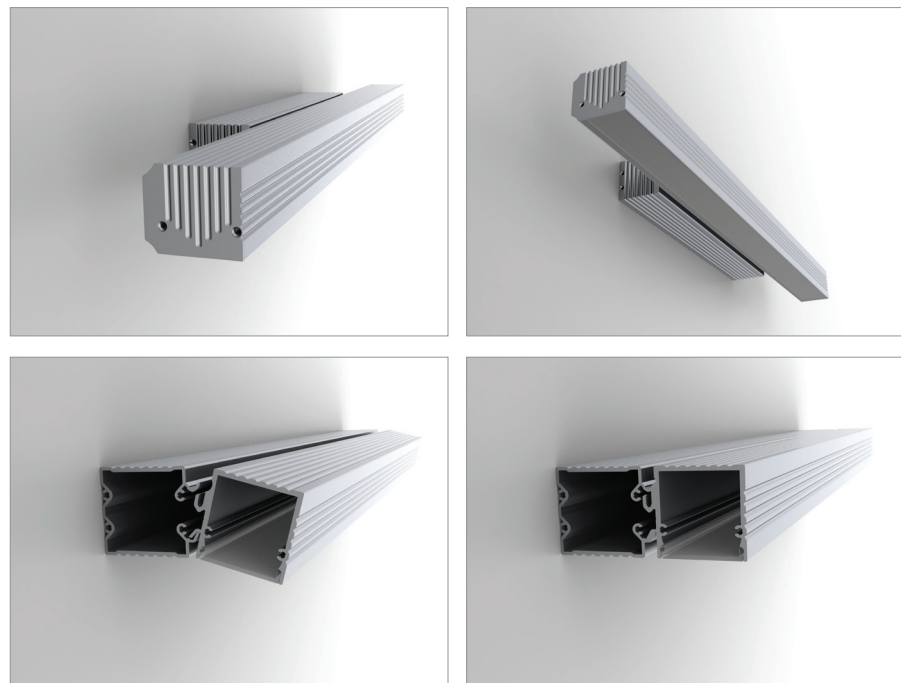
### FUTURES:

- Single light output Wall LED lamp with hiding base for power supply
- Modern design with all matching components
- High standard of the aluminum anodizing surface
- Snap in LEDs DOTs FREE frosted diffuser
- High power heat dissipation capability up to 30W/m
- Firm connection of the base with the wall and base with the profile
- Aluminum end caps



AL-PL35S  
AB-PL  
EC-PL35S

EC-PL35S End Caps

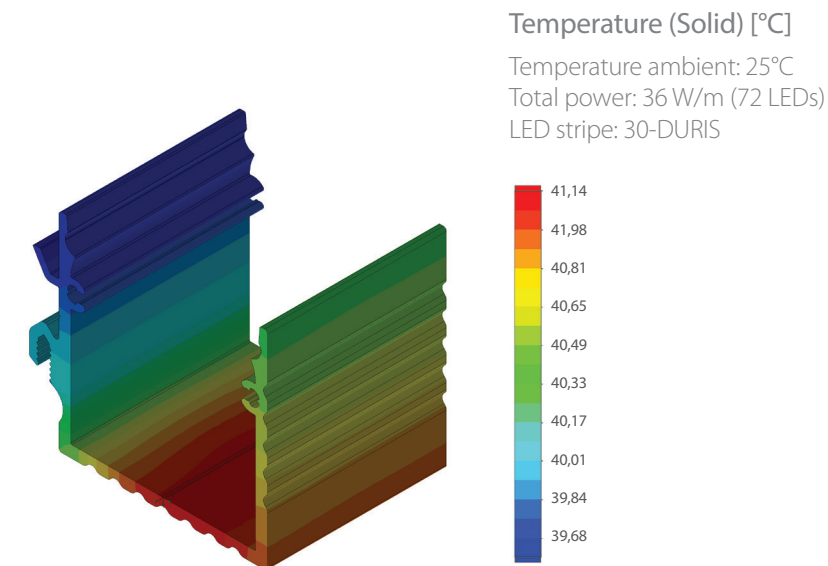


### DESCRIPTION

This is wall installed LED profile with light directed down. It is modification of our popular Power Line 35 profile. The design, diffuser remain the same like at the PL35 profile. The PL35 one side light down was equipped with the hiding base for the power supplier. Hiding base is matching the profile design, is made from the aluminum and screw it directly with to surface. Base is connected mechanically with the lighting profile by a few self threat screws ST2,2x9,5mm. Additionally the base and lighting profile is coming with the aluminum end caps holds by two screws ST2,2mm. The profile and the base is sale separately as well as the end caps. The profile is dedicated mostly for the high power LED lighting with the possible load up to 30W/m.



### PL35\_SINGLE ANALYSES



Polar Candela Distribution Plot  
Using Missed Rays

