

## TENNESSEE

Our BASIC led profile series for surfaces is only 8mm high and manufactured in high purity anodised aluminium.

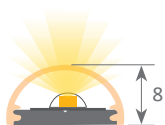
This profile is ideal for using on wall surfaces, furniture, shelves and similar areas, where we require a minimalist profile with very reduced dimensions. Its white cover completely embraces the profile and provides a greater angle of light emission.

It is suitable for led strips with a maximum width of 10mm, whose power level does not exceed 20W/m. In order to obtain a more homogeneous illumination, while also making the dots invisible, we recommend the combined use of both our opal cover and Canovelles-Barcelona-Gomera-COB ecoled strips.

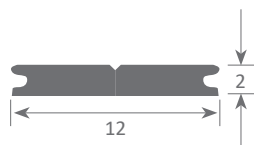
**We offer a 2 year guarantee on both profiles and covers.**



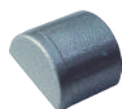
Scale 1:1



Scale 1:2



**Aluminium profile**  
01.014 anodised silver 2m



**Plastic integrated endcaps**  
19.357 gray without hole  
19.358 gray with hole



**Polycarbonate cover**  
18.020 opal 2m



Aluminium alloy extrusion process in accordance with: ISO 9001:2008 - ISO 14001 / Tolerances defined by: UNE-EN 755-9 / UNE-EN 12020-2  
Theoretical weight: 0.061kg / Alloy: 6063 / Perimeter: 30.4mm / Anodising minimum: 15 microns  
Aluminium purity: 95-98% / Material treatment: T-5 / Covers: methacrylate (greater protection against UV rays)