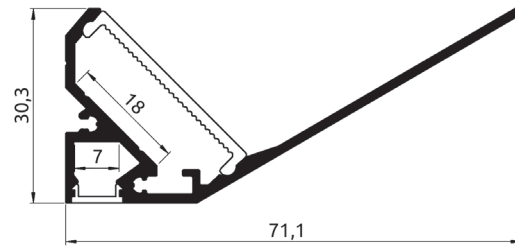


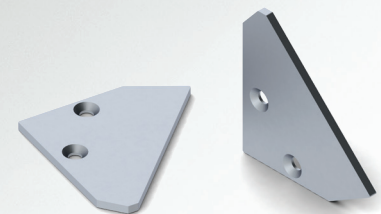
# ALU CEILING WASHER

ALU CEILING WASHER; 71 x 30 mm

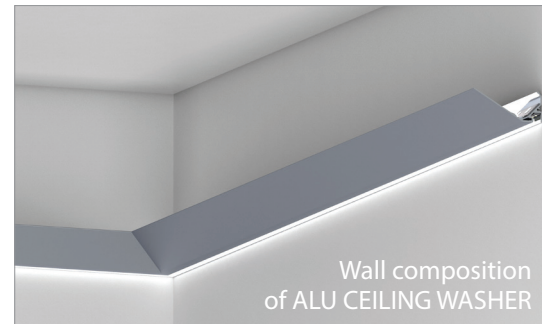
Design of this LED profile was made with the thoughts of soft, indirect ceiling LED lighting. The light in this model is directed up and down. The upper LED lights are directed in the wide indirect angle straight to the ceiling. The lower wall LED compartment is dedicated for low power, accent LED lighting. The profile was thermally optimized to reach high power LED load up to 36W/m for upper LED chamber and 10W/m for lower chamber. The profile if equip with the mixed color temperature, dimmable LEDs can be connected to the DALI system for scene control of daylight, mood light arrangement of the entire space. The profile is equipped with aluminum end caps, linear horizontal and vertical ninety-degree angle connectors for easy continuous profiles connections.



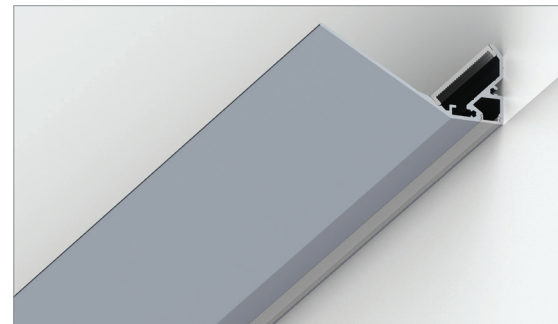
AL-CEW  
AB-PL  
AB-SS



End Caps EC-CEW-L/R



Wall composition of ALU CEILING WASHER

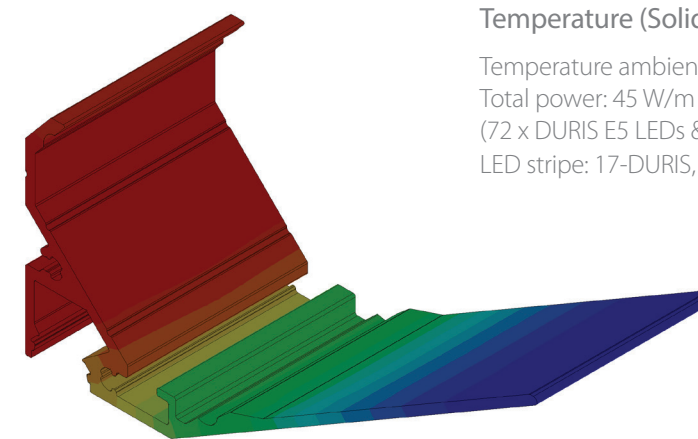
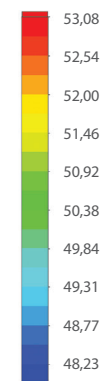
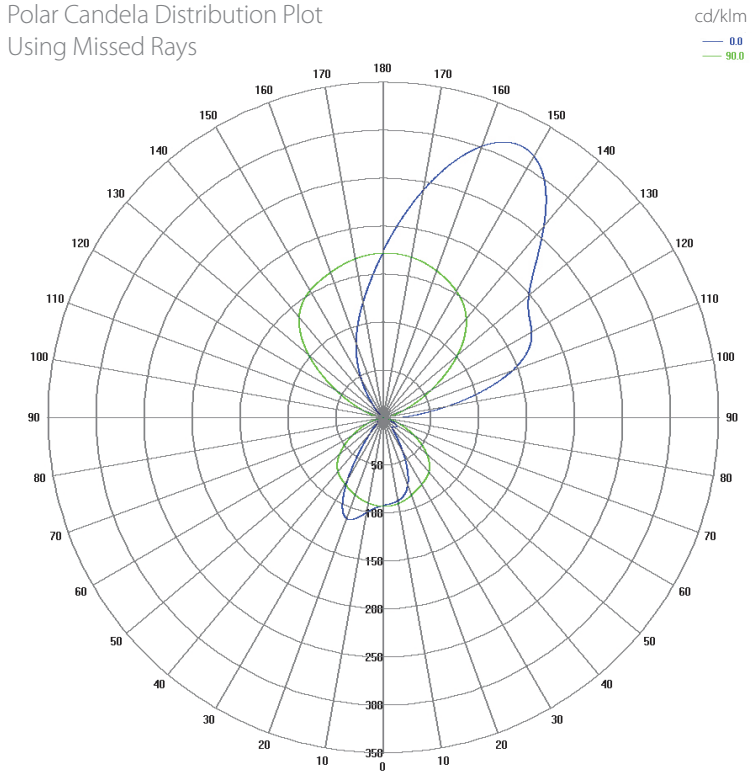


Linear connector LC-LIN



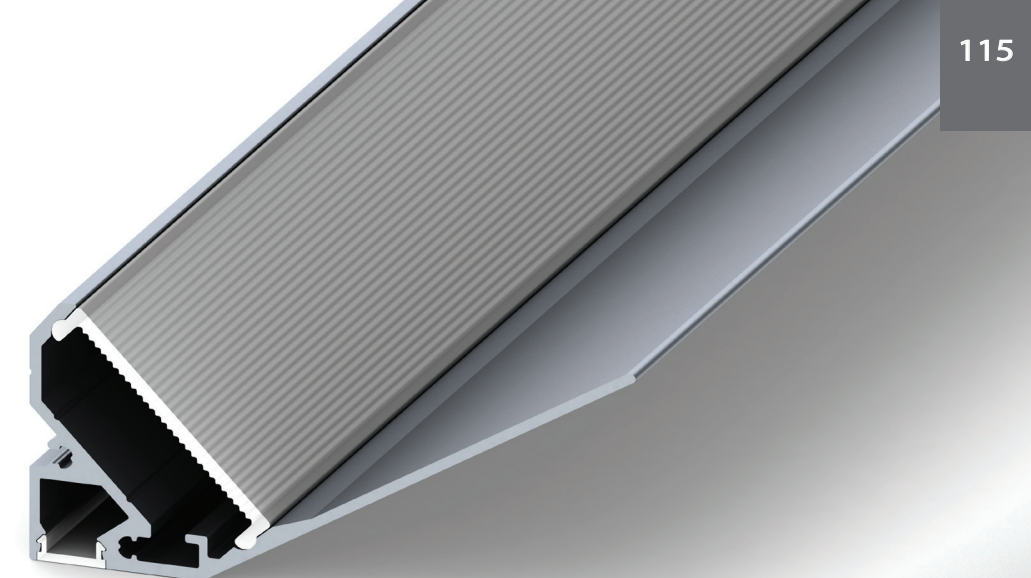
90° degree connector 90LC-HOR

Polar Candela Distribution Plot Using Missed Rays



Temperature (Solid) [°C]

Temperature ambient: 25°C  
Total power: 45 W/m  
(72 x DURIS E5 LEDs & 126 X DURIS E3 LEDs)  
LED stripe: 17-DURIS, 6-DURIS



AL-CEW  
AB-PL  
AB-SS

