



ALU-BASEBORD LED PROFILE

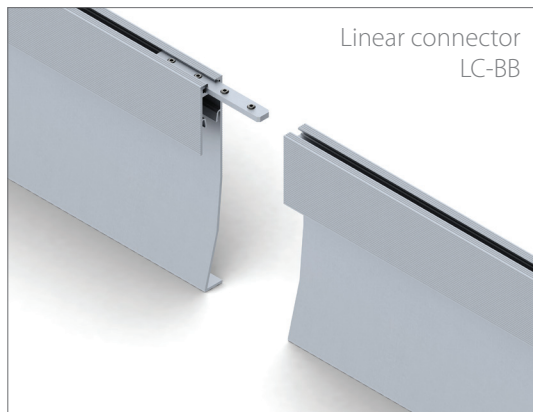
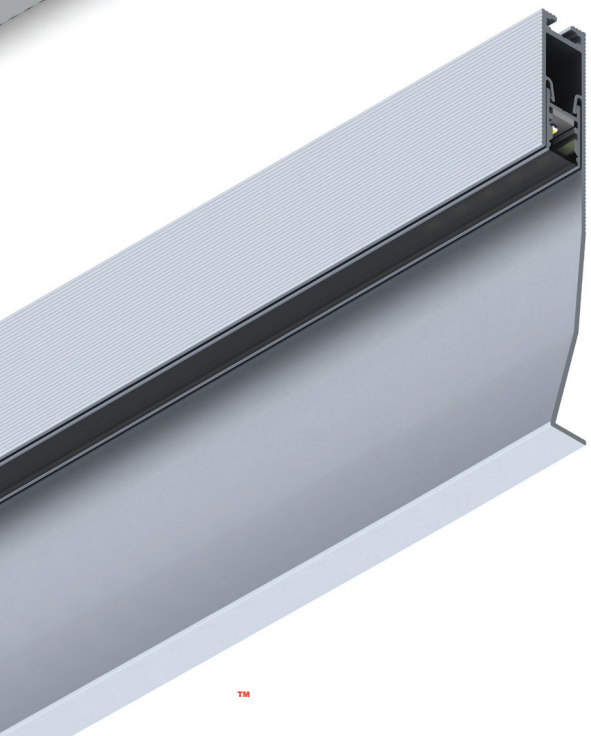
ALU-BASEBORD; 12,5 x 101mm

Alu-Baseboard - LED Profile for floor mood LED lighting.

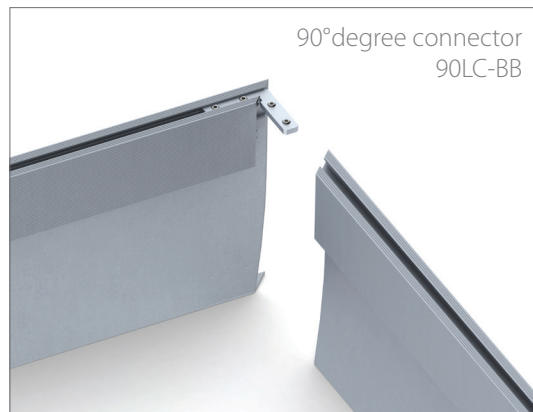
The Alu-Baseboard profile is two-part component product. In LED light fixture one part is permanently integrated with the construction of the wall. The second part is the light source, which is installed after the unclean construction work will be finished. The main idea of this design is to provide high integration of the profile with the wall, esthetic look, color matching, easy installation of the LEDs after construction work and simple access to it afterwards.

This LED solution opens up the possibility discrete accent LED lighting, mood lighting and energy saving night lighting in hallways, cinemas, theatres, hospitals, privet villas or hotels. It is minimalistic form of the exclusive finish of the wall with soft and adjustable light effect. The color of the light as well as the intensity of it is adjustable to create proper light mood of the room. Creating such an individual space where the source of light is invisible and integrated with pre definite light scene is the common trend in the present and future LED lighting.

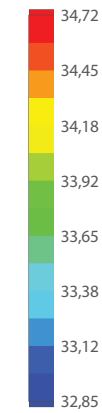
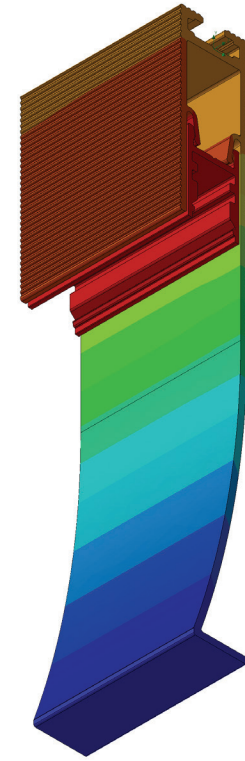
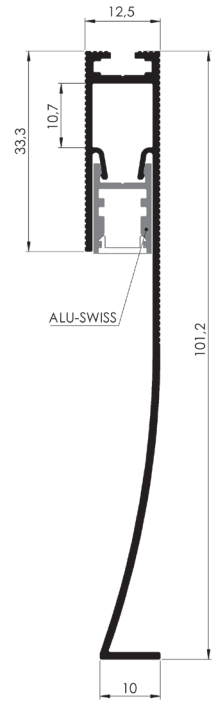
AL-BB-2/3
AL-SS-2/3
6-Duris LED PCB



Linear connector
LC-BB



90°degree connector
90LC-BB



Temperature (Solid) [°C]
Temperature ambient: 25°C
Total power: 10,6 W/m (126 LEDs)
LED stripe: 6-DURIS

AL-BB-2/3
AL-SS-2/3
AB-SS-2/3

