

* Parameters tolerance +/- 7%

Wired 4 Signs USA +1 (865) 339 4956 info@w4susa.com www.w4susa.com 7669 Clinton Highway, Powell, Tennessee, 37849

Product Description

M431 is a non-flammable, new generation, two-component structural adhesives. This product represents a new level of performance for all 10:1 low shrinkage high elongation structural methacrylate adhesives. **M431** offers a very tough and flexible bond, with high peel, fatigue and impact strength, at both low and elevated temperatures. Formulated from a innovative and bespoke blend of low-odour, non-flammable and non-carcinogenic monomers.

Open Time	3-4 min
Fixture Time	7-10 min
Mix ratio	10:1
Packaging	50ml, 490ml
Percentage Elongation (SAF* method)	>200%

Typical Applications

M431 is very versatile, and can bond a wide variety of substrates without the need for surface primers or conditioners

- Bonding locators to ACM without read-through or witness marks.
- Bonding mild steel frame to FRP and offering high vibration and impact resistance.
- Bonding fasteners to GRP and FRP moulded parts.
- Bonding and laminating composite panels.
- Composite and metal fabrication for seating construction.

Properties of Uncured Material

Resin	Low Odor Methacrylate
Colour	Black / Cream
Appearance	Thixotropic Gel
Viscosity Brookfield T Bar	250,000 to 300,000cps
Cure System	Non Peroxide

Performance of Cured Material

ASTM D1002 Lapshear	(Average over 16 tests)
Aluminum (unprepared)	14.36 Nmm ²
Polycarbonate	5.5 Nmm ² Substrate Failure
HIPS	5.2 Nmm ² Substrate Failure
Stainless Steel	15.33 Nmm ²
Mild Steel	18.37 Nmm ²
GRP	5.8 Nmm ² Substrate Failure
ABS	4.77 Nmm ²
Nylon	4.96 Nmm ²
FRP	5.8 Nmm ² Substrate Failure
Gap Fill	3mm
Temperature Range	-55 C to 120 C
Shore Hardness	60 Shore D
Tensile Strength at break (ISO 527 1A)	10.9 Nmm ²
% Elongation at break (ISO 527 1A)	104 %
% Elongation SAF* Method	>200%
UV Stability	Excellent

The data, information and values contained in this Technical Data Sheet has been obtained by conducting various tests in a controlled laboratory environment, and should be used for guidance purposes only. Although we believe them to be reliable and accurate, users should always conduct their own tests in their specific working conditions to ensure that the product is suitable and effective for use. It is the users sole responsibility to determine the suitability of the product for the application. Wired4signs USA cannot be held responsible for the results of procedures undertaken elsewhere, nor for the safeguarding of personnel or property, all of which is the duty of the user. Suitability of products or methods is discretionary. Therefore, warranties or implied usage obligations should not be attributed to, and are not the responsibility of, Wired4signs USA. Wired4signs USA is not liable for any financial loss or other damages incurred by the user as a result of the use of this product.



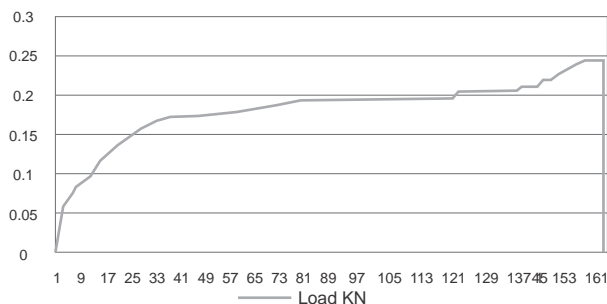
* Parameters tolerance +/- 7%

Wired 4 Signs USA +1 (865) 339 4956 info@w4susa.com www.w4susa.com 7669 Clinton Highway, Powell, Tennessee, 37849

Compatible Substrates*

Aluminum	Wood
Stainless Steel	Granite
Mild Steel	Marble
UPVC	Urethanes
Polyesters	Vinyl Esters
ABS	Glav/Zinc Coated (Primed)
Acrylic	Thermoset Plastics
FRP	Gelcoats
GRP	Epoxy laminate

Load (KN)/mm Extension ISO 5271A



Instructions For Use

1. Always consult MSDS before using
2. Carry out surface preparation where required.
3. Remove nut, attach mixer nozzle and replace nut.
4. Dispense sufficient adhesive to ensure equal mix and uniformed color.
5. Apply adhesive to one surface and assemble components carefully, clamping if required.
6. It is always easier to remove any excess adhesive prior to cure using a suitable cleaner.
7. Allow the adhesive sufficient time to achieve handling strength before moving or unclamping components.
8. **M431** will remain slightly tacky on open surfaces for 24hours unless speed cured at 80 C for 20 min.

Curing Cycle

Once mixed at the 10:1 ratio the working time of the **M431** is the period whereby the adhesive remains fluid and is easily transferrable between two or more mating surfaces. Temperature, volume and substrate have a direct effect on the length of this period as the **M431** cures by an exothermic reaction. Higher temperatures and larger volumes speed the reaction causing a reduction in open and cure time. Lower temperatures and smaller volumes slow the reaction time extending both the open time and ultimate full cure time.

Packaging

M431 is available in 50ml and 490ml Nylon cartridges.

Storage & Shelflife

M431 should be stored unopened in suitable hazardous storage conditions for adhesives that are cool, dry location and out of direct sunlight. Stored correctly, this grade can offer a 12 month shelf life from it's manufacture in the UK.

Health and Safety in Use

M431 is a structural methacrylate and should not be used without consulting the MSDS, which contains full information regarding the use of this product, including Transport, Disposal, Toxicological, Exposure Controls, Accidental Release and First Aid measures essential to the safe use of this product.

*Internal test ref SAF comparative dog bone analysis, test specification available on request.

**Contact your Wired4signs USA representative for full information and usage instructions.

M431 for the first time.