

UP-BOLD12



max 12 mm



special application

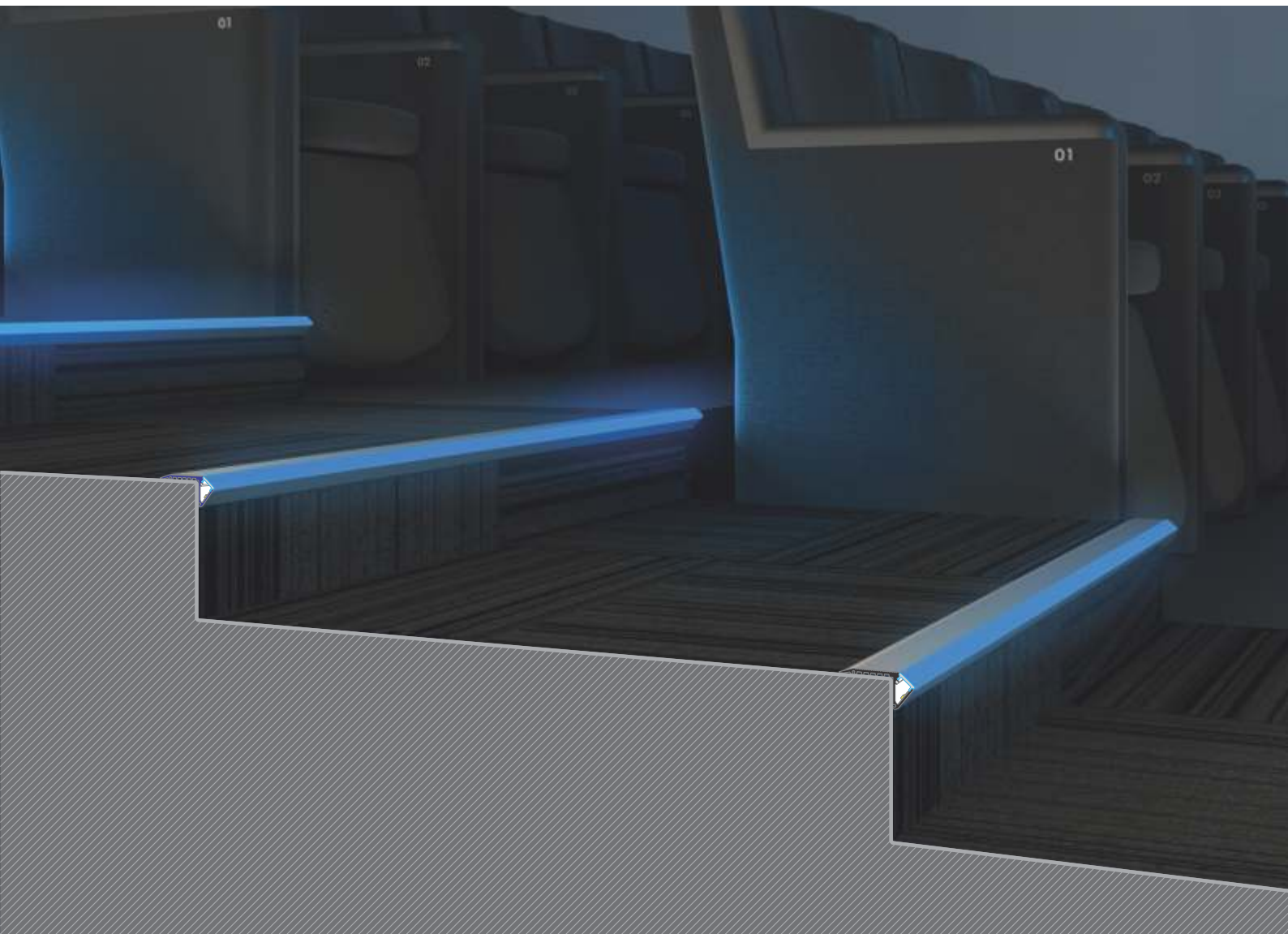


architectural

- for accentuating step edges
- simple, reinforced profile design (one-piece)
- reinforced K shade
- for use in areas with increased levels of movement (e.g. cinemas, theatres, etc.)
- good light diffusion (even with 60 P/m strip)
- anti-slip ribbing



more
information



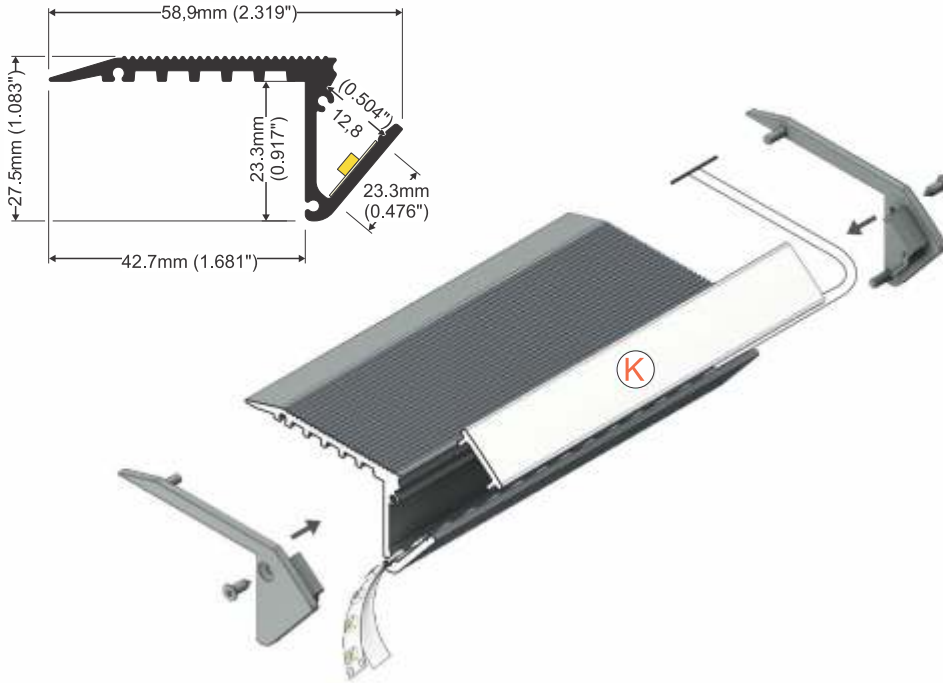
DISTRIBUTED BY



* Parameters tolerance +/- 7%

Wired 4 Signs USA +1 (865) 339 4956 info@w4susa.com 7669 Clinton Highway, Powell, Tennessee, 37849

diffuser K click



anodized



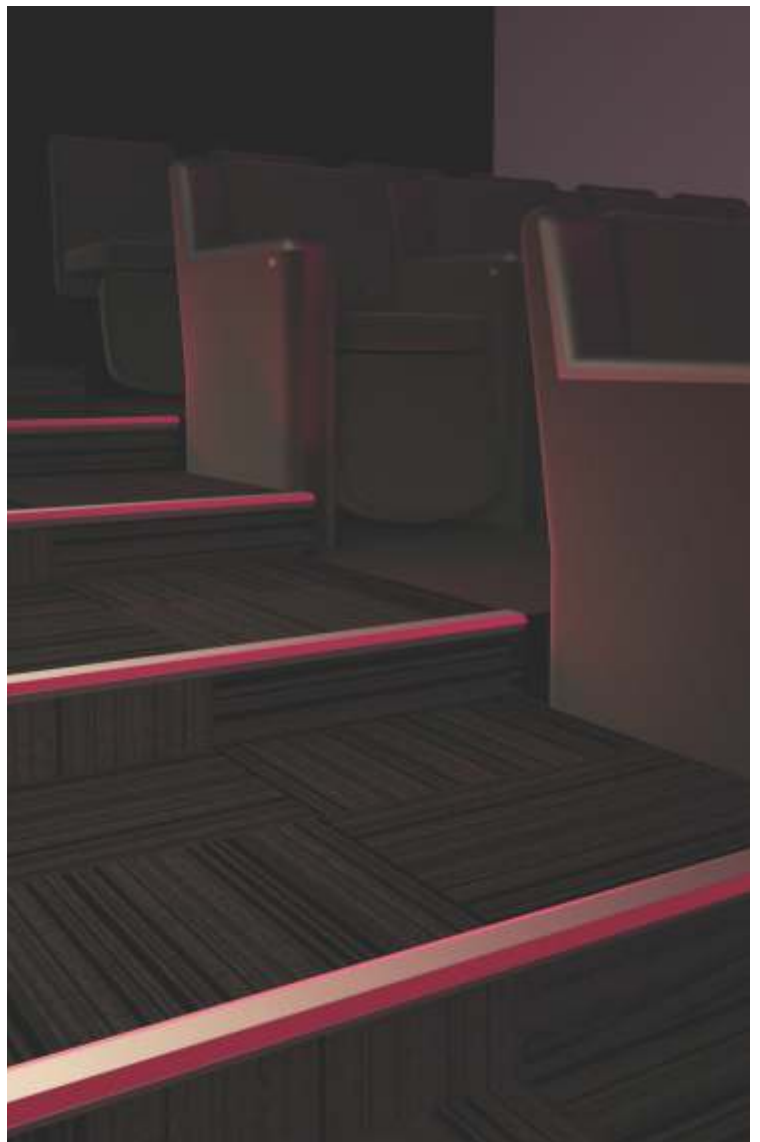
black painted

1000 mm	LED-J4000120	LED-J4000102
2000 mm	LED-J4000220	LED-J4000202
3000 mm	LED-J4000320	LED-J4000302
4050 mm	LED-J4000420	LED-J4000402

end cap UP-BOLD12



silver	black
LED-J4999940	LED-J4999902
grey	
LED-J4999922	



DISTRIBUTED BY



* Parameters tolerance +/- 7%

Wired 4 Signs USA +1 (865) 339 4956 info@w4susa.com 7669 Clinton Highway, Powell, Tennessee, 37849