

SMART16



- SLICK socket - easy assembly technology
- 2 channels for mounting bracket (with or without mounting surface distance)
- continuous line of light (when using LED strip 120 P/m and opal di user)



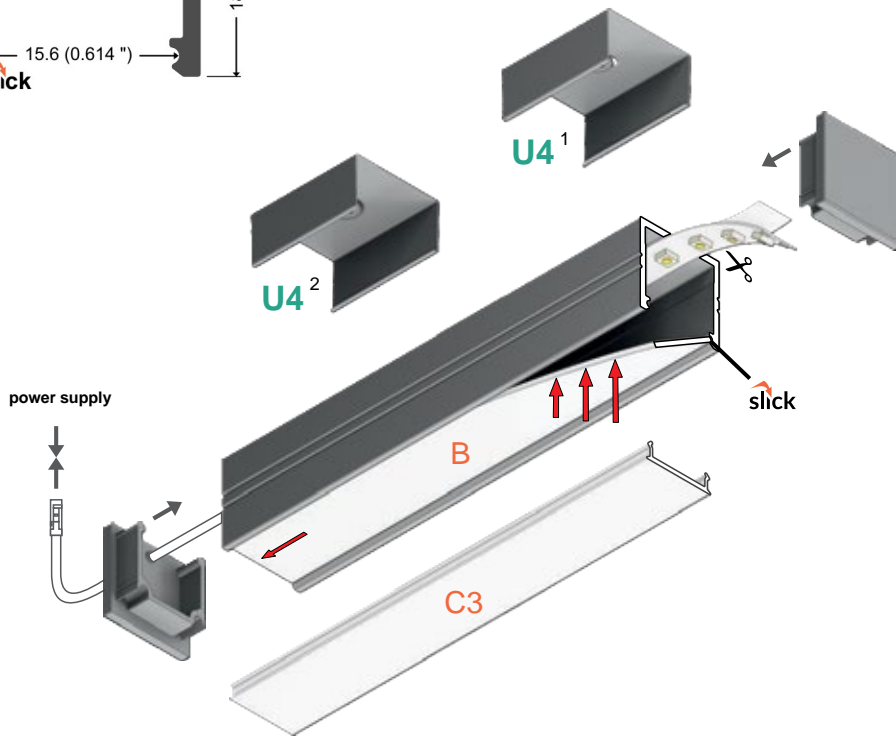
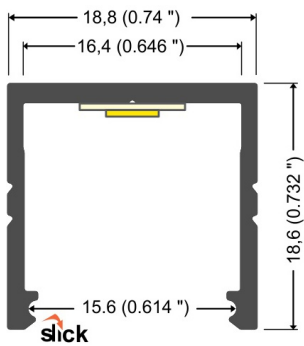
max 16 mm



Surface

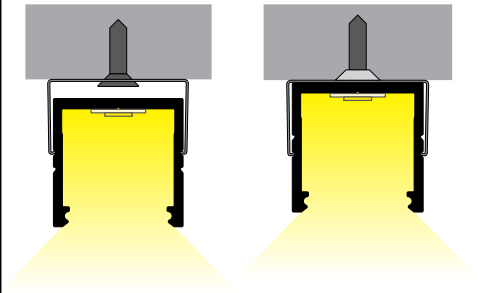


* Parameters tolerance +/- 7%

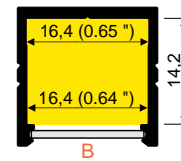


U4¹
U4 mounting
Plate

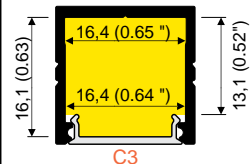
U4²
cone U4
Mounting plate



B
B slide di user



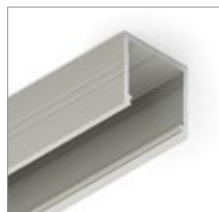
C3
C3 click di user



white painted

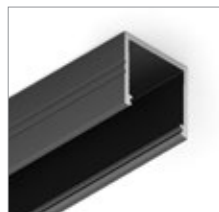
LED-F1020001

Standard length 2000 mm



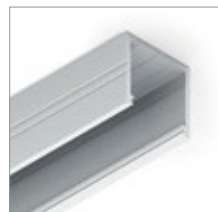
anodized

LED-F1020020P



black anodized

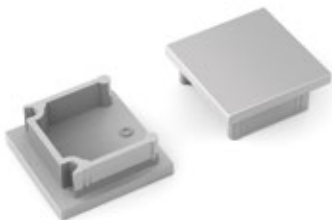
LED-F1020021



raw aluminium

LED-F1020000P

SMART16 end cap
material: ABS



White
LED-F1999901

Silver
LED-F1999940

Black
LED-F1999902

Grey
LED-F1999922

Technical details > 8-18

* Parameters tolerance +/- 7%