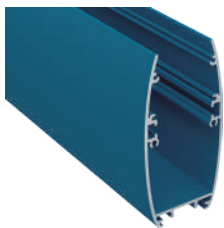
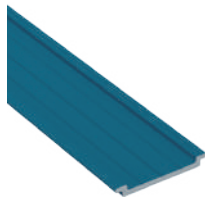


RICARDO by Luz Negra

Our PROFESSIONAL led profile series for surface/hanging applications is manufactured in high purity aluminium, with 8 different colours to choose from. Its inner tray (where we can find the led and power supply) can be removed from the front which means easy maintenance. The tray can also be placed on the upper part of the profile. It has a transparent or frosted microprism cover which improves UGR. Both profile and covers are available in lengths of 6m, allowing us to carry out long installations Without joints. We offer a 10 year guarantee on the profiles and 4 year guarantee on the covers.



Aluminium profile lacquered coating
 LED-17.052 Azure blue (ral 5009)
 LED-17.053 White (ral 9003)
 LED-17.054 Black (ral 9005)
 LED-17.055 Patina green (ral 6000)
 LED-17.056 Stone grey (ral 7030)
 LED-17.057 Pastel yellow (ral 1034)
 LED-17.058 Tomato red (ral 3013)
 LED-17.059 Ivory (ral 1014)



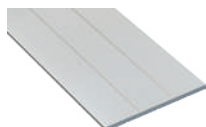
Inner sliding or up tray lacquered coating
 LED-17.015 Azure blue (ral 5009)
 LED-17.021 Patina green (ral 6000)
 LED-17.022 Stone grey (ral 7030)
 LED-17.023 Pastel yellow (ral 1034)
 LED-17.024 Tomato red (ral 3013)
 LED-17.025 Ivory (ral 1014)
 LED-17.026 White (ral 9003)
 LED-17.027 Black (ral 9005)



Polycarbonate cover
 LED-18.142 transparent microprism
 LED-18.144 frosted microprism

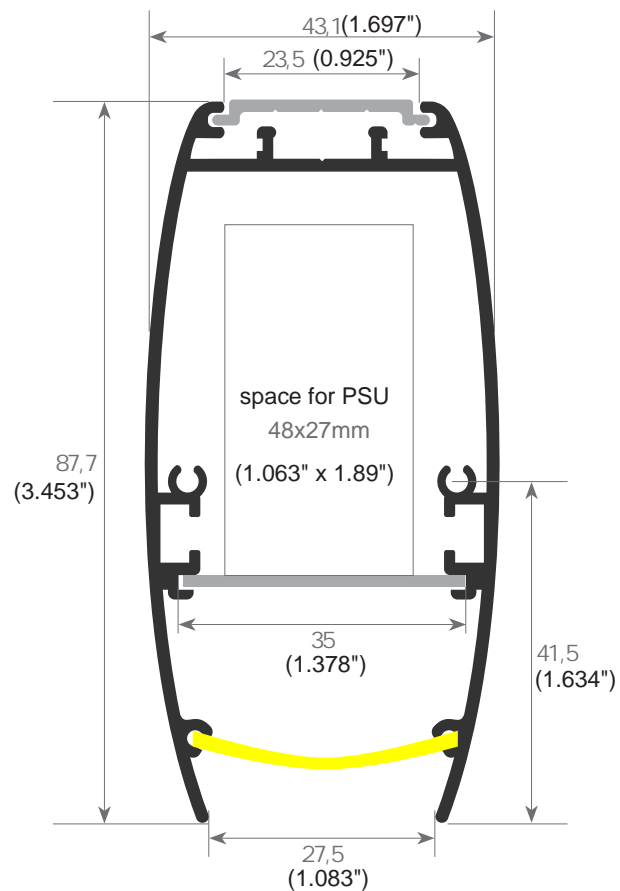
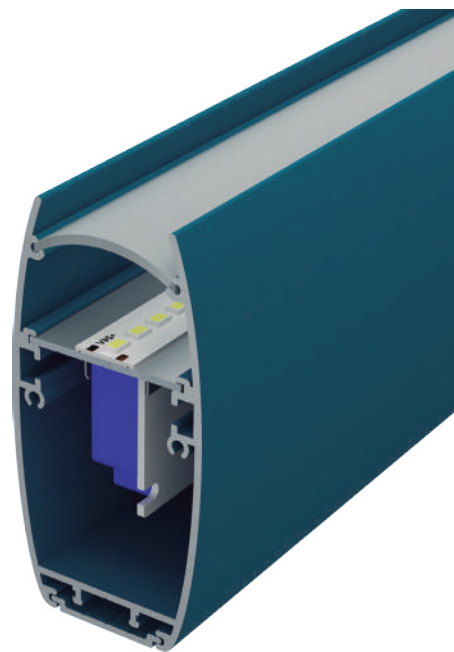
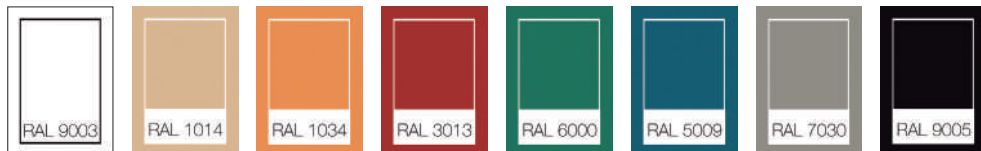


Aluminium endcaps lacquered coating
 LED-19.388 Azure blue (ral 5009)
 LED-19.389 White (ral 9003)
 LED-19.390 Black (ral 9005)
 LED-19.391 Patina green (ral 6000)
 LED-19.392 Stone grey (ral 7030)
 LED-19.393 Pastel yellow (ral 1034)
 LED-19.394 Tomato red (ral 3013)
 LED-19.395 ivory lacquered (ral 1014)



Inner plate
 LED-22.191 raw

Ral colours



DISTRIBUTED BY

Wired 4 Signs USA +1 (865) 339 4956
 info@w4susa.com 669 Clinton Highway, Powell,
 Tennessee, 37849

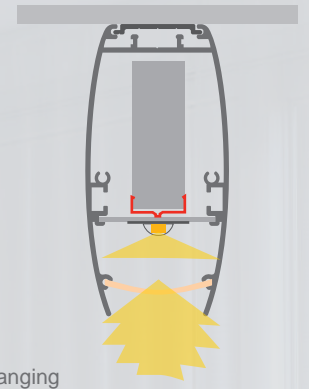


Aluminium alloy extrusion process in accordance with: ISO 9001:2015 / Tolerances: UNE-EN 755-9 / Theoretical weight: 1.320 kg / Alloy: 6063 / Perimeter: 603 mm / Purity aluminium: 98.5% / Treatment: T-5

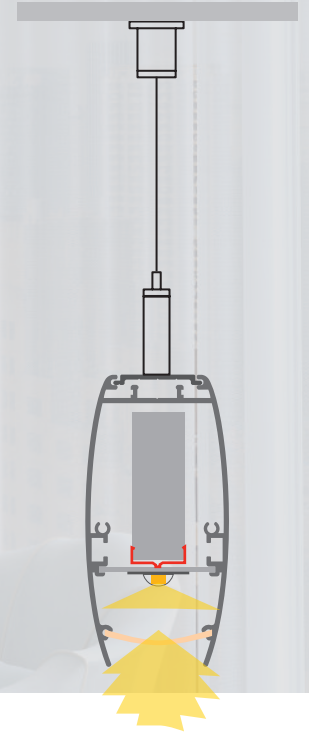
led profile by Luz Negra



Surfaces



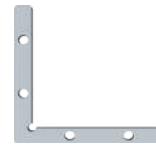
Hanging



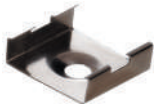
Joining
LED-22.005 steel



120° angle bracket
LED-22.004 steel



90° angle bracket
LED-22.003 steel



Clip
LED-20.007 chrome steel
LED-20.008 black oxide finish



Hanging kit
LED-21.001 chrome Set of 2 units
LED-21.002 white set of 2 units
LED-21.003 black set of 2 units

DISTRIBUTED BY

Wired 4 Signs USA +1 (865) 339 4956
info@w4susa.com 669 Clinton Highway, Powell,
Tennessee, 37849



Aluminium alloy extrusion process in accordance with: ISO 9001:2015 / Tolerances: UNE-EN 755-9 / Theoretical weight: 1.320 kg
/ Alloy: 6063 / Perimeter: 603 mm / Purity aluminium: 98.5% / Treatment: T-5