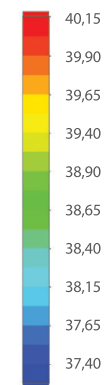
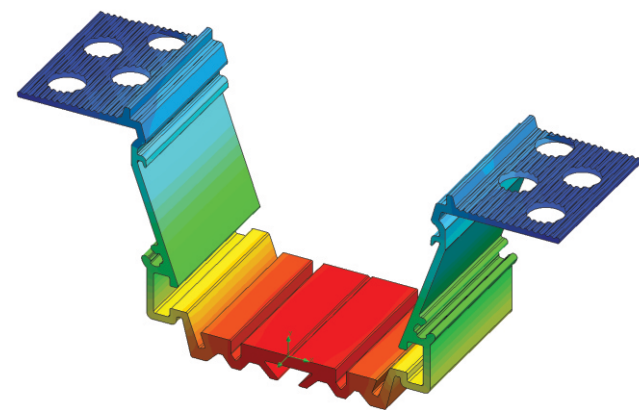
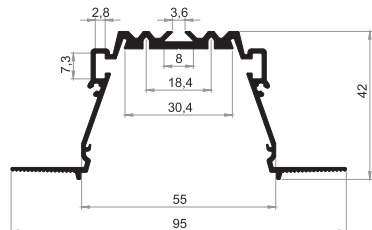


RPL55 US LED PROFILE

RPL55 US; 42 x 95 mm

The second solution from our new Plaster Board Line. Made of high-quality raw aluminum with diffuser span of 55mm, gives you opportunity to create functional and modern LED lamp for professional use. Innovative design provides unique features such as: Premade angle modules, mounting rail for the junction box and dedicated openings for the ease of installation. The profile was designed for our double rigid 30-Duris LED strips. The shape and weight of the profile is optimized to absorb heat from LEDs up to 45W / m and maintain stability. The profile is also equipped with reflectors made of highly polished aluminum designed for better light distribution (improvement of luminaire efficiency; 18-20%). The customer has a choice of an opal or a clear diffuser.



Temperature (Solid) [°C]
 Ambient temperature : 25° C
 Total power : 36 W/m (72 LEDs)
 LED stripe: 30-DURIS

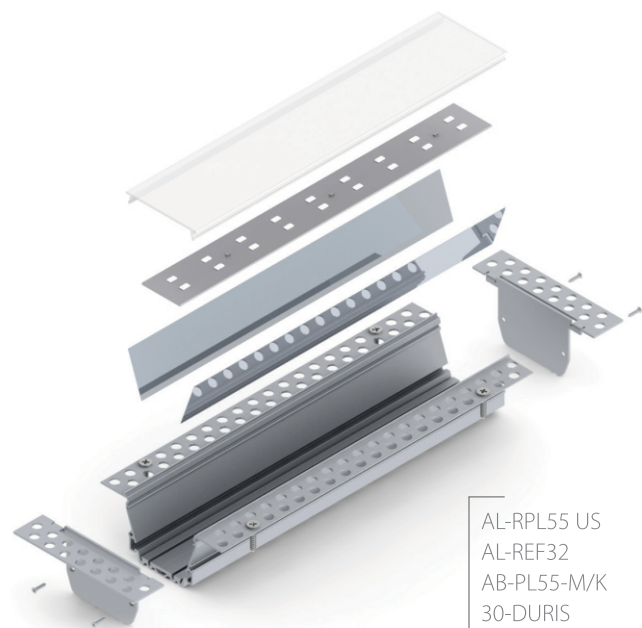


RPL55 US horizontal connection using 90LC-HOR

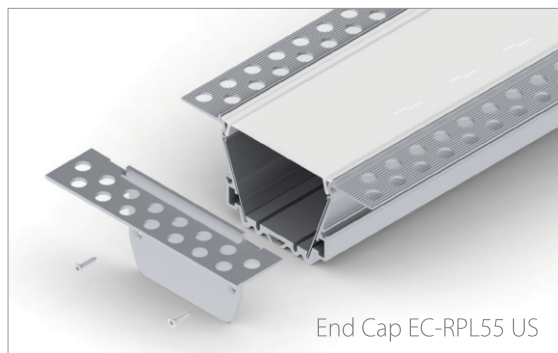


RPL55 US vertical connection using 90LC-VER

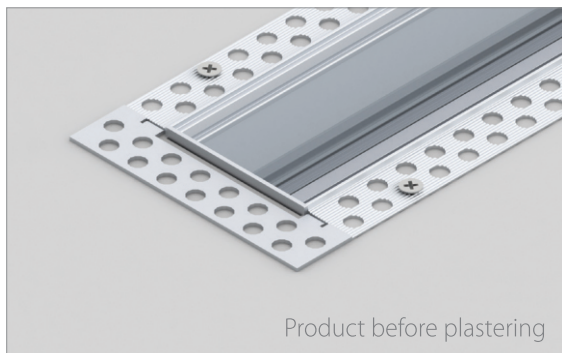
AL-RPL55 US
 AL-REF32
 AB-PL55-M/K
 30-DURIS



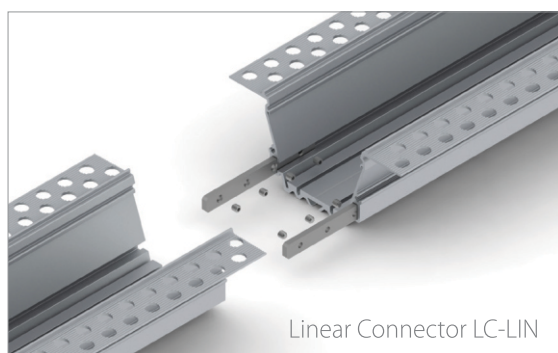
AL-RPL55 US
 AL-REF32
 AB-PL55-M/K
 30-DURIS
 EC-RPL55 US



End Cap EC-RPL55 US



Product before plastering

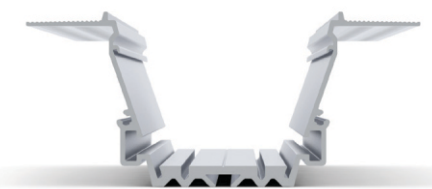
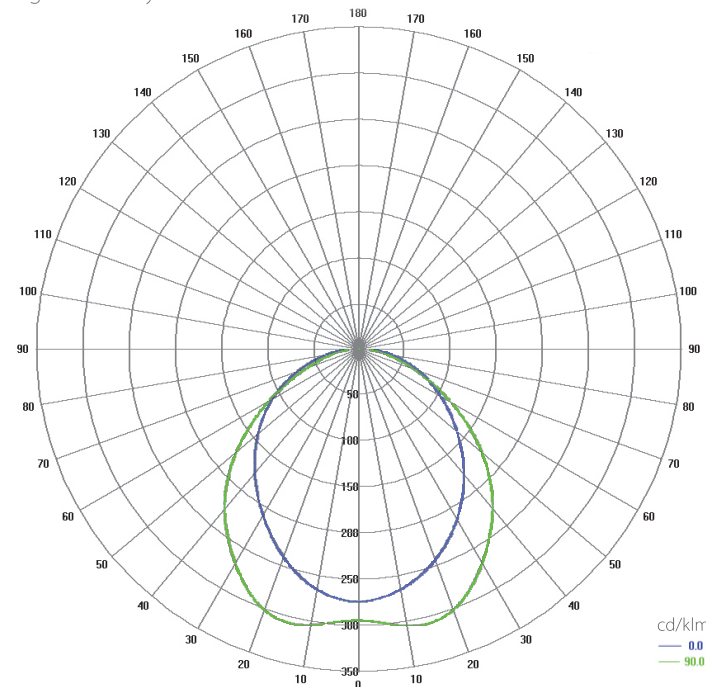


Linear Connector LC-LIN

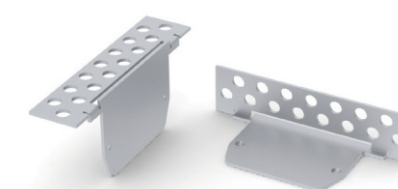


RPL55 US with junction box

Polar Candela Distribution Plot
 Using Missed Rays

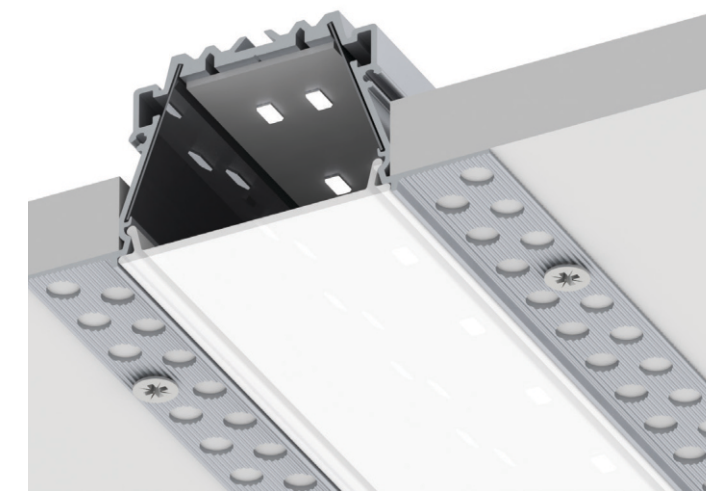


Cross section view of RPL55 US



Aluminum end caps EC-RPL55 US

AL-RPL55 US
 AL-REF32
 AB-PL55-M/K
 30-DURIS



Wired4Signs USA, LLC

6855 Barger Pond Way, Knoxville, Tennessee, 37912

Tel: +1 865 339 4956

