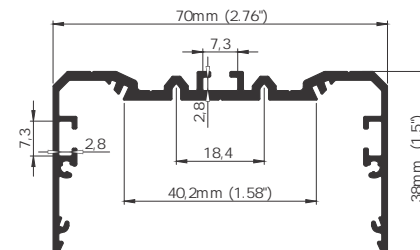


AL-PLW70 FL
AB-PLW70-M/K
AL-REF-32
36-DURIS
MC-PLW70-MAG

PLW70 FL LED PROFILE

PLW70FL ; 70 x 38 mm

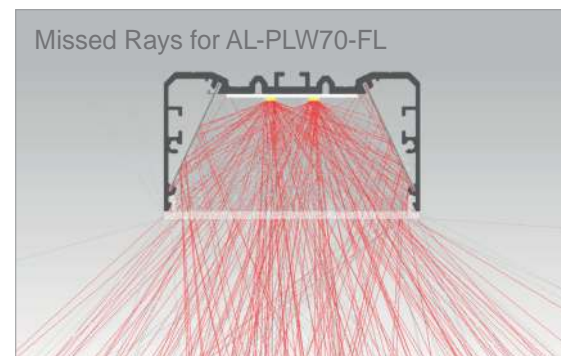
PLW70 FL is the newest product in our POWERLINE WIDE family. This multi-functional LED profile can be both suspended, installed on a flat surface our built in a trimless manner. This luminaire is capable of dissipating heat from LED strips up to 36W/m. Our design allows you to slide in reflectors made of highly polished aluminum with a high reflectivity (> 95%). Moreover, the reflectors can be set in two positions to get a narrow or a wide light distribution depending on your needs. This solution guarantees LED's DOT free e ect, creating homogenous line of light. PLW70 FL is available with matt or two prismatic di users: transparent and opal. Thanks to the available accessories, such as the linear and angular connectors along with the safety cables the installation process is safe and easy.



AL-PLW70 FL
AB-PLW70-M/K
AL-REF-32
36-DURIS
EC-PLW70 FL



PLW70 FL trimless installation



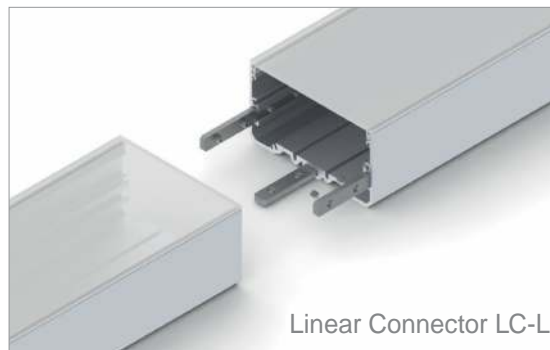
Missed Rays for AL-PLW70-FL



Mounting Brackets
MC-PLW70-MAG



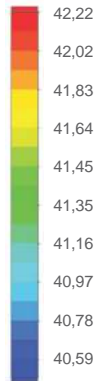
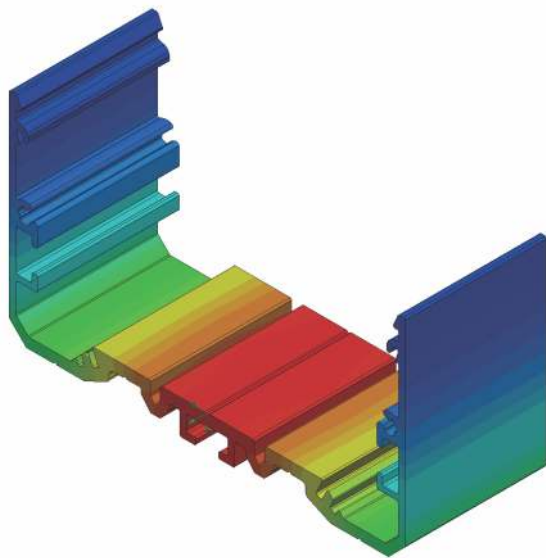
Aluminum end caps
EC-PLW70 FL



Linear Connector LC-LIN



90° degree connector 90LC-HOR



Temperature (Solid) [°C]
 Ambient temperature : 25° C
 Total power: 36 W/m (72 LED
 LED stripe: 36-DURIS



AL-PLW70 FL Led Profile

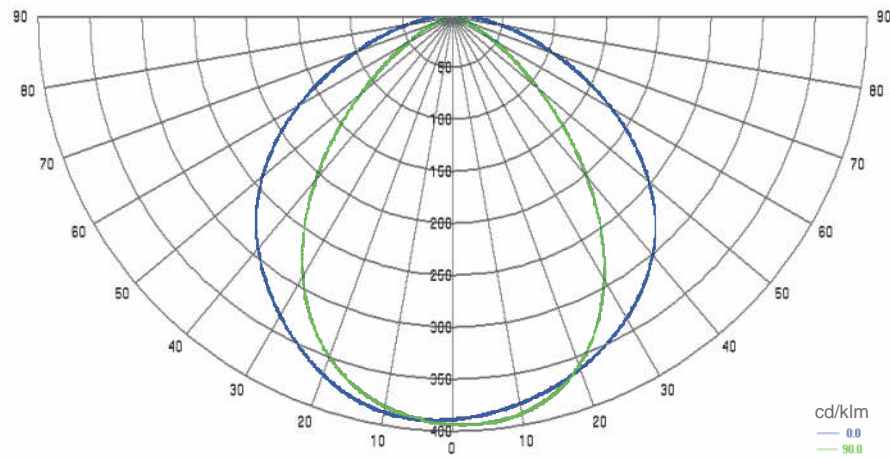


Cross section view of PLW70 FL



AL-PLW70 FL
 AB-PL70-M/K
 AL-REF-32
 36-DURIS

Polar Candela Distribution Plot
 Using Missed Rays



PLW70 FL suspended from the ceiling