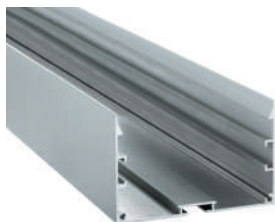
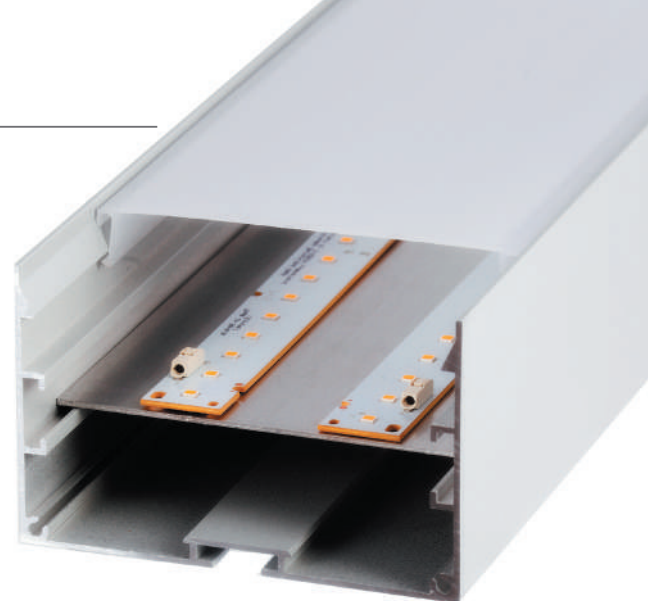


BRUSELAS by Luz Negra

Our PROFESSIONAL LED profile series for surfaces/hanging applications is manufactured in high purity aluminium and lacquered in textured white or grey. This is a very wide profile which permits us to install a double rigid led strip in order to achieve high levels of luminosity (especially indicated for shopping malls, supermarkets, etc.).

Drivers can be housed inside. The covers are available in frosted white. Both profile and cover are available in 3.4m lengths.

We offer a 2 year guarantee on the profiles and covers.



Aluminum profile

16.014	textured grey	3.40m
16.015	textured white	3.40m
16.032	textured black	3.40m



Inner tray

14.043	white textured	1.680mm
--------	----------------	---------



Polycarbonate cover

18.080	frosted	3.40m
--------	---------	-------



Profile joint

22.044	steel	set of 2 units
--------	-------	----------------



Aluminium endcaps

19.249	grey
19.250	white
19.350	black



Inner plate

22.045	aluminium
--------	-----------



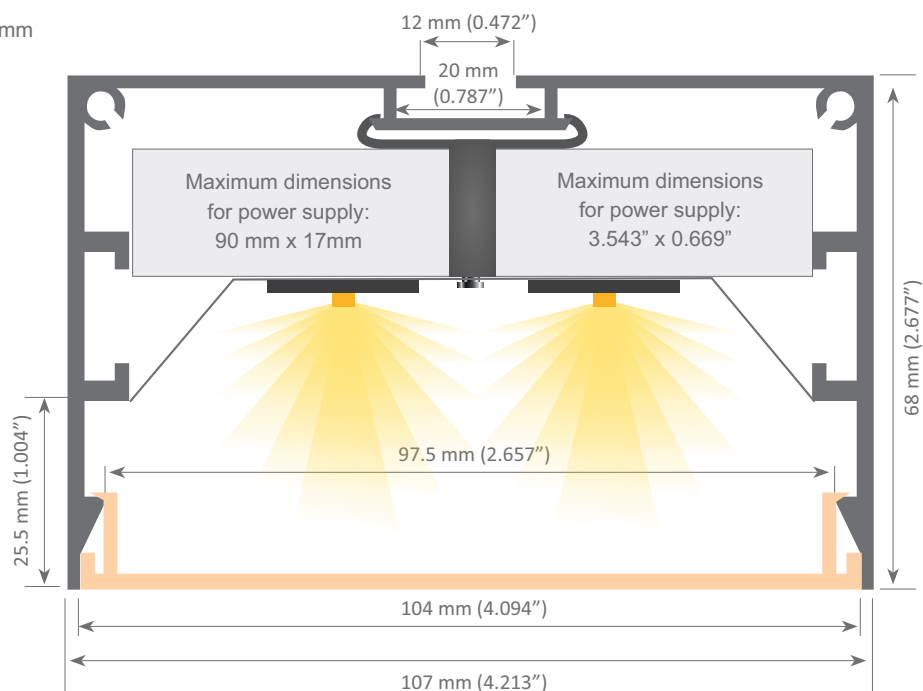
Hanging kit

21.001	chrome	set of 2 units
21.002	white	set of 2 units
21.003	black	set of 2 units



Support plate

22.047	steel
--------	-------



UNIFORM LINEAR

DISTRIBUTED BY
Wired 4 Signs USA
+1 (865) 339 4956
info@w4susa.com
7669 Clinton Highway,
Powell, Tennessee, 37849



Aluminum alloy extrusion process in accordance with: ISO 9001:2008 - ISO 14001 / Tolerances defined by: UNE-EN 755-9 / UNE-EN 12020-2
Theoretical weight: 1.323Kg / Alloy: 6063 / Perimeter: 612mm / Anodizing minimum: 15 microns
Purity aluminum: 95-98% / Treatment: T-5