

DISTRIBUTED BY



BERLIN XL led profile

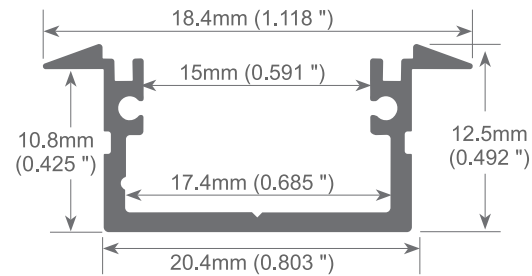
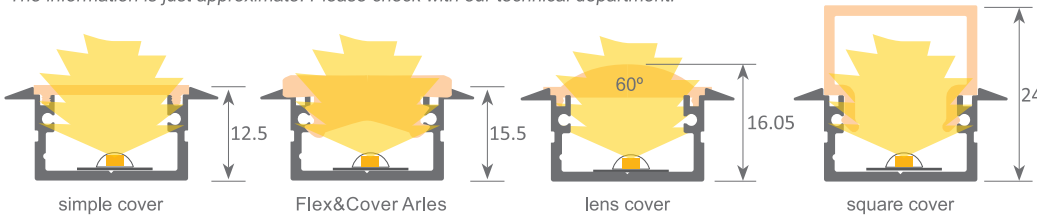
Our PROFESSIONAL LED profile series for recessing is manufactured in high purity silver anodised aluminium. Ideal for embedding in furniture, shelving and similar areas where a width greater than the standard is required. This allows us to use wider led strips for an increased heat dissipation and a wider angle of light emission. Its cover (available in 8 different finishes), when combined with this profile, provides an IP65 rating to the luminaire. Therefore, the profile can be used in places with high levels of humidity, such as bathrooms, kitchens, gyms, spas, cold storage chambers, fridges and similar. This profile and its covers are available in lengths of 2 meter and smaller. It is suitable for led strips with a maximum width of 15mm and a power not greater than 15W/m, as there is no ventilation when embedded in wooden surfaces. We recommend using it with our High CRI IP20 LED Strip (24V) ~ White Iris Series LED strips.

We offer a 10 year guarantee on the profiles and a 4 year guarantee on the cover



Scale 1:1

By applying the lens cover on the Berlin XL profile together with the flexible led strip we get a beam of 60° light. The information is just approximate. Please check with our technical department.



Aluminium profile
Anodised silver 2m
LED-BERLINXL-04.005-2
Anodised black 2m
LED-BERLINXL-04.006-2



Plastic endcaps
LED-19.059 grey without hole
LED-19.060 grey with hole
LED-19.321 Black without hole
LED-19.320 black with hole
* Roma XL endcaps can also be used



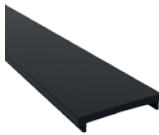
Endcaps for square cover no hole
LED-19.026 white
LED-19.027 black



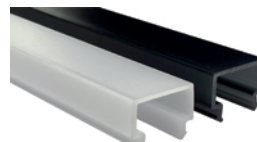
Clip
LED-MC-20.009-S chrome steel
LED-MC-20.010-B Black oxide finish



Polycarbonate cover "easy-ON"
LED-DIFF-C-18.022 transparent 2m
LED-DIFF-O-18.023 opal 2m
LED-DIFF-F-18.024 frosted 2m
LED-DIFF-O-18.026-6 opal 6m
LED-DIFF-F-18.027-6 frosted 6m



Black&White cover "easy-ON"
LED-DIFF-B/W-18.028
Black&White 2m
LED-DIFF-B/W-18.029-6
Black&White 6m



Square cover
LED-18.032 Frosted 2m
LED-18.102 Black&White 2m
LED-18.033 frosted 6m
LED-18.034 Black&White 6m



90° angle bracket
LED-22.001 steel (52x13mm)



Patente Europea
N°.: 13156605.1

Aluminium alloy extrusion process in accordance with: ISO 9001:2008 - ISO 14001 / Tolerances defined by: UNE-EN 755-9 / UNE-EN 12020-2
Theoretical weight: 0.187kg / Alloy: 6063 / Perimeter: 120mm / Anodising minimum: 15 microns
Aluminium purity: 95-98% / Material treatment: T-5 / Covers: Fireproof V0

* Parameters tolerance +/- 7%