

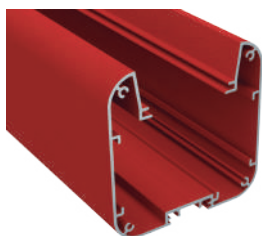
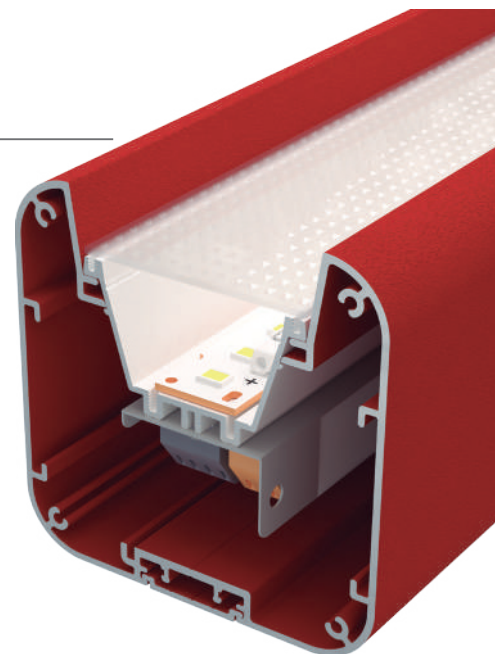
ANTONIO by Luz Negra

Our PROFESSIONAL led profile series for surface/hanging applications is manufactured in high purity aluminium, with 8 different colours to choose from.

Its inner tray (where we can find the led and power supply) can be removed from the front which means easy maintenance.

This profile can be combined with microprism covers both in transparent and frosted ("easy-ON" System), which improve glare and UGR levels.

We offer a 10 year guarantee on the profiles and 4 year guarantee on the covers.



Aluminium profile

- LED-17.028 azure blue lacquered (ral 5009)
- LED-17.029 White lacquered (ral 9003)
- LED-17.030 black lacquered (ral 9005)
- LED-17.031 Patina green lacquered (ral 6000)
- LED-17.032 stone grey lacquered (ral 7030)
- LED-17.033 Pastel yellow lacquered (ral 1034)
- LED-17.034 tomato red lacquered (ral 3013)
- LED-17.035 ivory lacquered (ral 1014)

Inner sliding or up tray

- LED-17.015 azure blue lacquered (ral 5009)
- LED-17.021 Patina green lacquered (ral 6000)
- LED-17.022 stone grey lacquered (ral 7030)
- LED-17.023 Pastel yellow lacquered (ral 1034)
- LED-17.024 tomato red lacquered (ral 3013)
- LED-17.025 ivory lacquered (ral 1014)
- LED-17.026 White lacquered (ral 9003)
- LED-17.027 black lacquered (ral 9005)



Aluminium tray

- LED-14.007 lacquered white
- LED-14.042 lacquered black



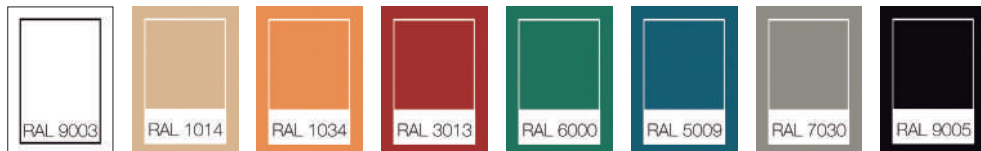
Aluminium endcaps

- LED-19.412 azure blue lacquered (ral 5009)
- LED-19.413 White lacquered (ral 9003)
- LED-19.414 black lacquered (ral 9005)
- LED-19.415 Patina green lacquered (ral 6000)
- LED-19.416 stone grey lacquered (ral 7030)
- LED-19.417 Pastel yellow lacquered (ral 1034)
- LED-19.418 tomato red lacquered (ral 3013)
- LED-19.419 ivory lacquered (ral 1014)

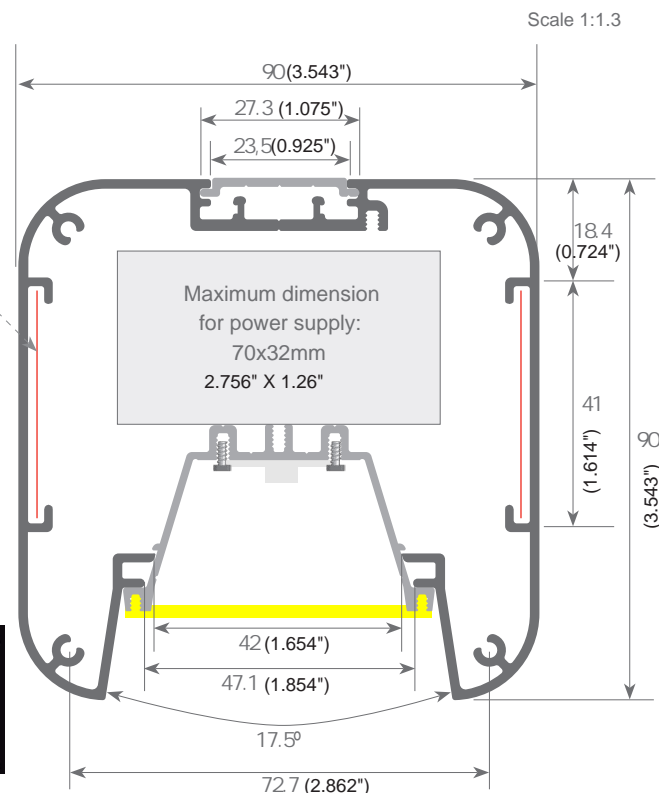
"easy-ON" polycarbonate cover

- LED-18.074 frosted
- LED-18.075 transparent microprism
- LED-18.076 frosted microprism

Ral colours



Space to house joint plates or 90° inner brackets.



DISTRIBUTED BY

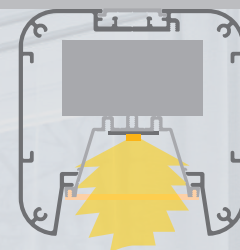
Wired 4 Signs USA +1 (865) 339 4956
 info@w4susa.com 669 Clinton Highway, Powell,
 Tennessee, 37849



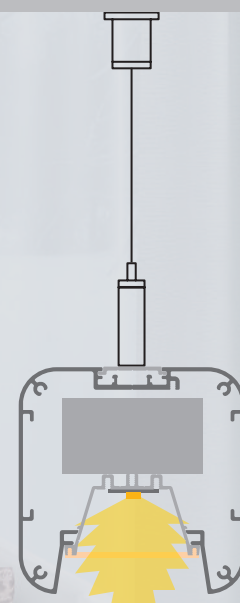
Aluminium alloy extrusion process in accordance with: ISO 9001:2015 / Tolerances: UNE-EN 755-9 / Theoretical weight: 1.320 kg / Alloy: 6063 / Perimeter: 603 mm / Purity aluminium: 98.5% / Treatment: T-5



Surfaces



Hanging



90° angle bracket
V22.040 aluminium set of 2 units



Flat bracket
LED-22.057 aluminium set of 2 units



Joining plate
LED-22.041 aluminium set of 2 units



Clip
LED-20.007 chrome steel
LED-20.008 black oxide finish



Hanging kit
LED-21.001 Chrome set of 2 units
LED-21.002 White set of 2 units
LED-21.003 black set of 2 units



Safety cable
LED-22.039 steel 18cm

DISTRIBUTED BY

Wired 4 Signs USA +1 (865) 339 4956
info@w4susa.com 669 Clinton Highway, Powell,
Tennessee, 37849



Aluminium alloy extrusion process in accordance with: ISO 9001:2015 / Tolerances: UNE-EN 755-9 / Theoretical weight: 1.320 kg
/ Alloy: 6063 / Perimeter: 603 mm / Purity aluminium: 98.5% / Treatment: T-5