

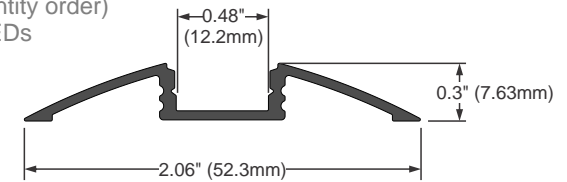


Alu-Flat

LED Floor Lighting Strips Surface Mount Channel

FEATURES:

- Y High quality di user now placed from the front on click
- Y Polycarbonate UV resistant, damage resistant (walk over safe)
- Y Di user available in transparent, 50% opal and opal
- Y Base of the profile is made in anodized aluminum
- Y Profile is available in RAL9010 and standard anodized color
- Y Profile is available in lengths 1m, 2m or 3m (large quantity order)
- Y ALU-FLAT is suitable for low power and high power LEDs
- Y Simplicity in design with high quality finish
- Y Profile and di user is "walk over safe"
- Y Protection grade IP20



LED-AL-FL-2
LED-AB-SL

APPLICATIONS:

- Y Under kitchen cabinets LED lighting
- Y Stores shelves LED lighting
- Y Floor LED lighting
- Y Storage shelves LED lighting
- Y Exhibition boot LED lighting
- Y Interior LED lighting

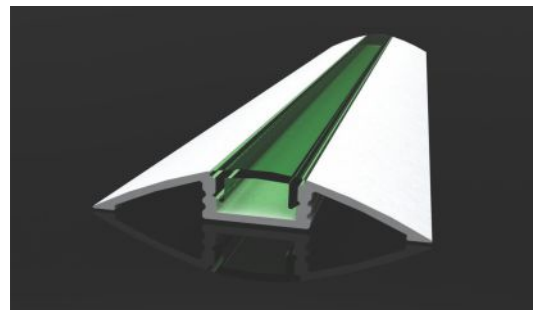


LED-EC-FL1

LED-EC-FL2



LED-AL-RFL
LED-AB-SL



Description

This quality, anodized, aluminum LED profile is only 7,6mm (0.3") high. Alu-Flat may be installed on the floor, thanks to strong aluminum walls and a damage resistant di user. The profile has many different applications: for example may be installed under a shelf, a kitchen cabinet or on the floor. The product is available on stock in silver anodized or white version. The LED profile is dedicated to standard low or mid power LED stripes up to 25W/m, 12mm wide. The profile performs both roles of a LED heat sink and of an aesthetic stylish housing for the LED stripes. The profile is available with three high-quality UV and damage resistant snap-in di users: frosted, 50% frosted and smooth. The available accessories for Alu-Flat such as two types of end caps help professionally finish the installation



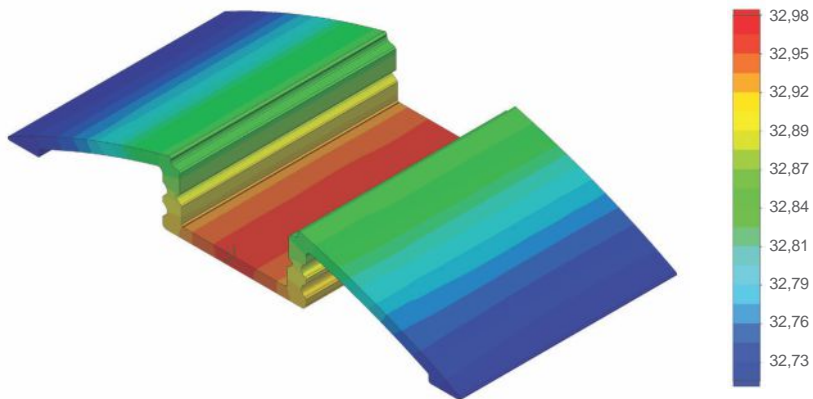
Analysis

Temperature (Solid) [°C]

Temperature ambient: 25°C

Total power: 8 W/m (96 LEDs)

LED stripe: 12-3528



Polar Candela Distribution Plot
Using Missed Rays

