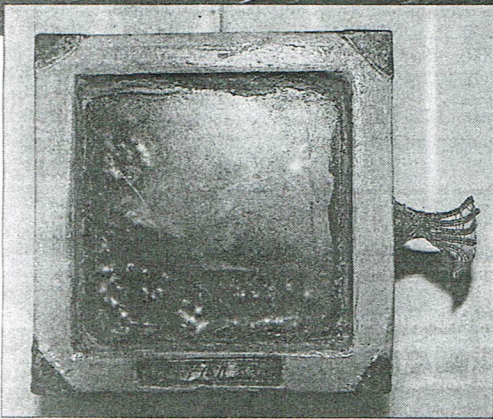


# Shekki Shed Gallery

BELOW: Marnie Hutchinson with the small wooden boxes into which a dozen artists were invited to create artworks, using a range of materials and techniques.  
 BOTTOM: Marnie with Helen Norton's Spiritual Sacrifice.  
 BOTTOM LEFT: : Gina Moore's Fish.



EAST Meets West is the title of an exhibition of art works currently showing at the Shekki Shed Gallery.

The exhibition is the result of a concept developed by gallery proprietor and artist Marnie Hutchinson.

"I invited 12 artists, all working in different mediums, to consider the notion of East Meets West and see what they could come up with," she said.

"I specifically suggested they allow concepts of Eastern (Asian and Middle Eastern) spiritualism to influence them in their work - whether they interpreted that personally, in terms of the local town culture, or in terms of the dominant Western culture in general."

The results are many and varied. Helen Norton's Spiritual Sacrifice is a wonderfully satirical piece, a fine tidbit of political commentary. Ali Pritchard's excellent hand made paper is a literal East Meets West, using Eastern paper making techniques adorned with locally grown plants.

Kevin McLachlan's fine black and white photographic prints exude a serenity often associated with the East. Wood craftsman Neil Chant's serving blocks are made using the classic Japanese dovetailing methods of joining, with the result a little reminiscent of 'geisha girl' shoes. Ian McConnell's interpretation of the theme is very spiritual, with a protective, nurturing touch. Other artists include Gina Moore, Pascal Le Clerq, Marnie Hutchinson, Chris Hill, Max Goodwin John Awram and Kerry Marvell.

"Along with the theme, I gave each artist a small wooden box, 10 centimetres square, with a glass lid, and asked them to create something with it," Ms Hutchinson said.

"This produced some very interesting results, with the challenge and discipline of working within a confined space quite difficult for