

Sample



Petal Wrap Dress

SIZES PREM - 4

A sweet and simple reversible dress for every season

Twig + Tale





Twig + Tale



Website

twigandtale.com

Pattern Modifications & Inspiration

Click on *Petal Wrap Dress* on the twigandtale.com blog menu for even more options.



Facebook Group

Join our group to share your photos and give & receive advice from other Twig + Tale pattern sewers.

facebook.com/groups/twigandtale

Facebook Page

facebook.com/twigandtale



Instagram

Tag your photos using **#twigandtale**
We'd love to see your creations!

instagram.com/twigandtale



Pinterest

pinterest.com/twigandtale



Twitter

twitter.com/taletwig



Blog

twigandtale.com/blog



Mailing List

Sign up for exclusive pattern release notifications, inspiration and reads.

Scroll to the bottom of the homepage at www.twigandtale.com to sign up



Email

hello@twigandtale.com

Contents

This table of contents is “clickable” - simply click on the item you want to read, and it will take you right there.

Credits 3

Before You Begin

Icons 4
Sewing Summary Print Sheet 4
Print Only What You Need 4
Seam Allowance 4
Navigation Bar & Quick Links 4

Where Imagination Runs Wild

Views

Options 6
Pathfinder + Animal Options 6

Fun Little Pattern Hacks! 7

Gather Supplies

Suggested Fabrics 8
Measuring for a Good Fit 9
Size & Measurements Chart 10
Fabric Requirement Chart 11
Finished Garment Measurements 11
How to Adjust Sizes for a Custom Fit . 12

Upcycle Inspiration

Making a Garment from Recycled Materials 13

Print + Assemble Pattern

Paper Sizes 14

TERMS OF USE

This pattern and its instructions are protected by copyright law. Please do not email copies to your friends or family; instead, refer them to twigandtale.com so they can purchase a copy for themselves. I rely on the honesty of my customers to support my shop, so thank you in advance for respecting my copyright.

Small home-based handmade businesses selling items on Etsy or similar are welcome to sell products made from this pattern, but I do kindly ask that you reference Twig + Tale somewhere within your product description.

Credits

View Illustrations: Jessica Van Slooten

Pattern Grading: Jacqui Peterson

Cover Image: Ruth Phillips

Other images throughout the tutorial are courtesy of the wonderful group who helped to test this pattern.

Julie Rigaud, Sarah Deutsch, Ummul Masakin, Lois Windsor, Carrie Collier, Brittany Stephenson, Caroline Devonport, Laurie Roberts, Nicole Bours, Sasha Kamaruzzaman, Anne Lawson, Evelyn Waldner, Millie Graham, Vilma Roldan, Samantha Cuthbertson, Bobbi Wicorek, Jo Bredin, Melissa Nonnemaker-Smale, Temeaka Tate, Genevieve Nepveu, Lucille Joy Verdey, Danielle Boehlig, Kristie Comarmond, Maartje Emmers, Kerryn Wilson, Sharon Aguilar, Amanda Cassy, Alexandra Desbruslais, Liz Joffrion, Andie McDonald, Sonja Den Biggelaar, Danielle Carney, Rachel Baldacchino, Lucy Merchant, Kristin Bedell-Hustedt, Shirley Tan, Jess Ross, Krysten McGillivray, Grace Smith, Leanne Steel, Kiaraleigh Lambkin, Kristen Prystupa, Jessica Gillespie, Erin Krusic-Golub, Melisa Harry, Tori Priest, Heather Brett, Pawinee Dodson, Ruth Phillips, Kim Angel, Hannah Mincey, Sarah Beasley, Tabitha Woodard, Becky Petty, Alexis Clark, Jo Benayoun, Jocelyn Buggie, Angela Schade.

Many thanks!

Using Layers 15
 Printer Settings 15
 Troubleshooting 15
 Assembling Pattern Pieces 15
 Which Pages to Print 15
 Page Assembly Diagram 16

Twig + Tale Video Guides

This pattern has accompanying video guides! 17

Sewing Instructions 18

Share Your Wrap Dress With Us

Now you have an awesome Petal Wrap Dress- it is time to show it off! 26

Inspiration

Images from the Testing Team 27

Sewing Summary

Petal Wrap Dress 30
 Glossary of Sewing Terms 32



The Petal Wrap Dress is super cute paired with our Twig + Tale **Tree Climbers** or **Pixie Shorts!**

Before You Begin

Icons



Helpful tips.



Click on the **bold green** word to navigate directly to the page indicated.

Sewing Summary Print Sheet

Save a tree! This tutorial is designed to be viewed on an electronic reading device such as an iPad or phone while sewing. Although you can print the entire document, included at the end of this pattern is a handy “Cheat Sheet” with the basic instructions in an easy-print format. You may consider printing out this summary to store with your pattern pieces.

Print Only What You Need

Use the layers feature to select only the size you need, and print only the pages you require for your desired option. This is further explained in the Printing Instructions.

Seam Allowance

The seam allowance for this pattern is 3/8” (1cm) unless otherwise stated, and is already included.

Navigation Bar & Quick Links

The “Quick Link” section of the navigation bar at the bottom of each page helps you easily navigate to the most used sections of the tutorial. For example, if you wish to go to the contents page, simply hover over the word “CONTENTS” until you see the little hand appear - click on it, and there you are!

On the right-hand side you will see the Pattern Name. When you click on this, it will take you to the Twig + Tale blog, where you can view all blog posts written about this pattern.



CONTENTS
SUPPLIES
VIDEO GUIDE

PRINTING INFO
SEWING INSTRUCTIONS
INSPIRATION



www.twigandtale.com

Petal Wrap Dress

Where Imagination Runs Wild

I love a classic wee dress on a little one - add in reversibility and the ability to mash with other Twig + Tale patterns to create a dress or tunic for any of the four seasons, and my heart just sings!

Whether it's a cool and breezy linen version for summer or a contrasting version in wintry wool with a pixie hood and paired with tights (so cute on sweet chunky legs!), this dress is bound to deliver ... and those teeny-tiny sizes are perfectly delightful and practical for a special baby shower gift too!

I hope this sweet wee dress becomes one of your go-to simple-sew patterns.

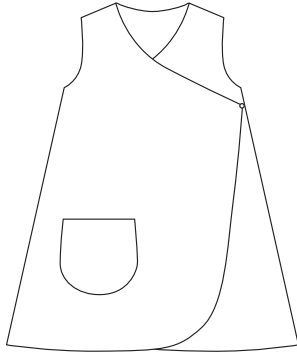
Lisa xox



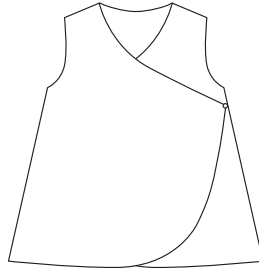
Image by Jessica Gillespie

Views

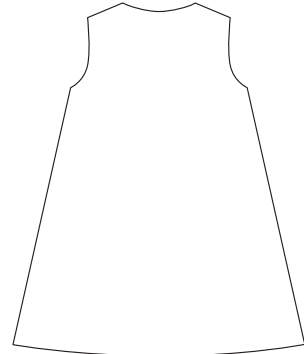
Options



Front



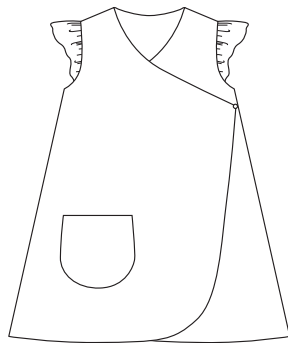
Tunic Length Front



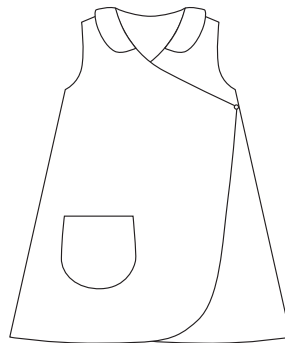
Back

Create the looks below by using the flutter sleeves, collar or hood pattern pieces from your Twig + Tale Pathfinder Vest, Pixie Pea Coat, Animal Vest or Animal Coat

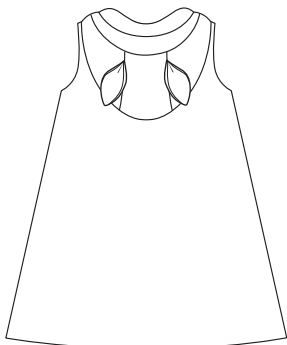
Mashes with other T+T Patterns



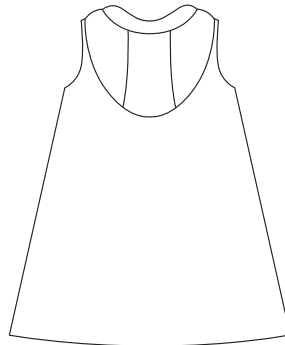
Flutter Sleeves



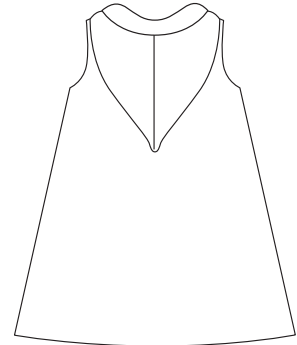
Collar



Animal Hood



Round Hood



Pixie Hood

Fun Little Pattern Hacks!

Now that you have made some awesome Petal Wrap dresses - it's time to spread your wings!
These simple modifications to your Petal Wrap dress can create all kinds of new looks...

Simply click on the symbol for *Petal Wrap Dress* blog posts, on the *Twig + Tale Blog* 



Image by Kristie Cormarmond

ADD A FLUTTER



Image by Genevieve Nepveu

ADD A RUFFLE



Image by Jo Benayoun

ADD BIAS BINDING



Image by Jo Benayoun

ADD TIES TO FASTEN



Image by Jess Ross

ADD A PIXIE HOOD



Image by Krysten McGillivray

ADD AN ANIMAL HOOD



Image by Rachel Baldacchino

ADD PIPING



Image by Angela Schade

ADD POCKET EMBROIDERY



Image by Pawnee Dodson

ADD COLOUR BLOCK

Gather Supplies

Suggested Fabrics

Exterior: Mid weight wovens: quilting cotton, linen, light-medium weight wools, corduroy, denim, chambray. Up-cycled shirts and vintage sheets also make lovely petal dresses.

Lining: As this garment is reversible you can use the same fabrics for each side. Other lining options could be lawn or rayon.

Other Supplies & Notions

- Spool of coordinating thread
- Buttons or snaps
- Cord elastic (or elastic hair ties!)
- Bias binding (optional) 3-4.5 yds (2.5-4m) depending on size
- Piping (optional)



Image by Rachel Baldacchino



Image by Kim Angel



Image by Tori Priest

Measuring for a Good Fit

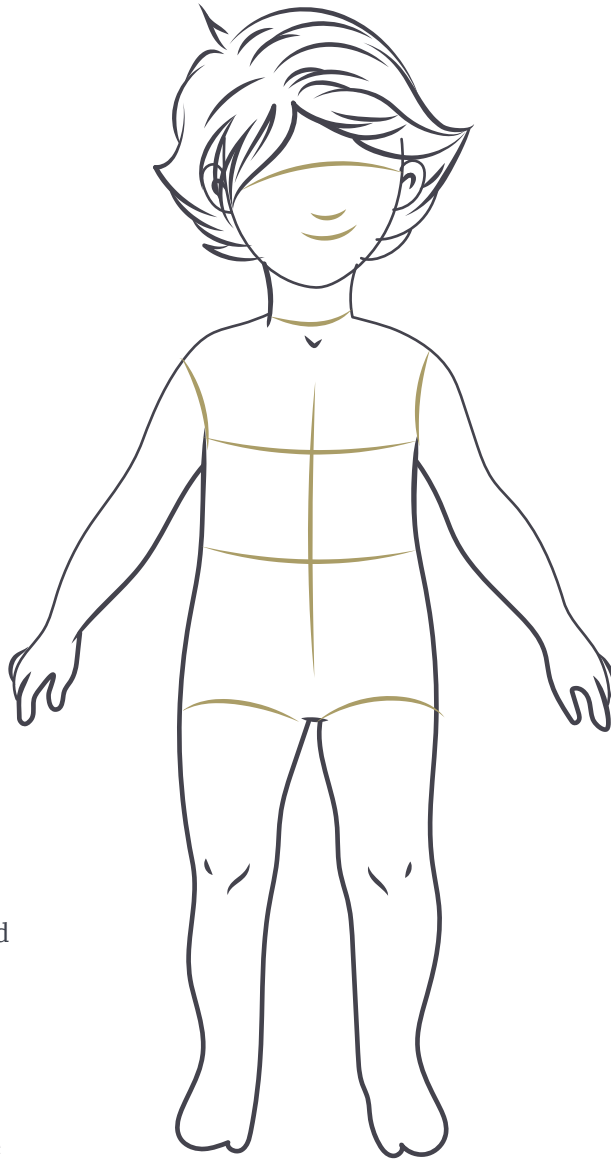
Have your child stand up straight with their arms by their sides. They should not hold their breath while being measured.

Chest

Measure directly under the arms at the fullest part of the chest. This is usually right at the level of the armpits.

Hip

Make the tape measure into a circle around the fullest part of the hips and slide it down, easing it out slowly until the tape measure drops off. *Just* before it drops off is the fullest part. You may have to do it a few times to get an accurate measurement.



Waist

Make a circle with the tape measure and slowly close the circle until it sits at the narrowest point of the waist. This is generally around the belly button, but everyone is different.

Height

Stand the child against a wall with bare feet and heels flat. Mark the top of the head on the wall, and then measure from the mark to the floor.

Size & Measurements Chart

Check the child's measurements against the measurements in the size chart to get the best fit. **Please do NOT choose the size based on age - rather, measure and go by the correct size.** These sizes are based on ATSM standard measurements and may NOT correspond to typical ready-to-wear sizes.

If your child's chest and height measurements fall under two different sizes, you can easily alter the length. The finished garment measurements on the following page will give you a guide of how much length to add. Use the custom fit instructions on page 12 for further explanation.

Size	Prem	NB	0-3	3-6	6-9	9-12	12-18	18-24	3	4
Child's Chest	15 ½" 39.3cm	16" 40.5cm	16 ½" 41.9cm	17 ½" 44.4cm	18" 45.7cm	18 ½" 47cm	19 ½" 49.5cm	20 ½" 52.1cm	21" 54cm	22" 57cm
Child's Waist	15" 38.1cm	16" 40.64cm	18" 45.7cm	18.5" 47cm	18.75" 47.6cm	19" 48.3cm	19.5" 49.5cm	20" 50.8cm	20.5" 52.1cm	21" 53.3cm
Child's Hip	15.5" 39.37cm	17" 43.18cm	17" 43.2cm	18" 45.7cm	18.5" 47cm	19" 48.3cm	20" 50.8cm	21" 53.3cm	22" 56.1cm	23" 58.4cm
Child's Height	17-19" 43-49cm	19.5-21.5" 50-55cm	22-23.5" up to 60cm	24-26.5" 60-68cm	27-27.5" 69-72cm	28-30.5" 73-78cm	31-32.5" 79-83cm	35.5" 90cm	38" 97cm	41" 105cm



Image by Brittany Stephenson



Image by Jo Benayoun



Image by Sonja Den Bigelaar



Fabric Requirement Chart

You will need the following amounts for both the exterior and the lining fabrics. You may need more if matching plaids/checks or if you have a directional fabric.

Fabric Width		PREM	NB	0-3	3-6	6-9	9-12	12-18	18-24	3	4
110cm / 43"	inches	17.7	17.7	19.7	19.7	23.6	23.6	31.5	31.5	39.4	39.4
	cm	45	45	50	50	60	60	80	80	100	100
132cm / 52"	inches	15.7	15.7	17.7	17.7	21.7	21.7	25.6	25.6	27.6	27.6
	cm	40	40	45	45	55	55	65	65	70	70

Finished Garment Measurements

Sometimes it is handy to know how much “ease” there is in a pattern if trying to decide between sizes.

The following chart details the measurements of the finished garment.

Finished Garment Measurements		PREM	NB	0-3	3-6	6-9	9-12	12-18	18-24	3	4
Chest Measurement <i>(measurement taken with buttons fastened)</i>	inches	16.5	17.7	18.9	19.7	20.5	21.3	22.1	22.9	23.7	24.5
	cm	42	45	48	50	52	54.1	56.1	58.2	60.2	62.2
Centre Back Length <i>(from neck seam to hem)</i>	inches	11.3	12.3	13.3	14.3	15.2	16.3	17.2	18.2	19.2	20.8
	cm	28.7	31.2	33.7	36.3	38.7	41.3	43.7	46.3	48.7	52.8
Tunic Length <i>(from neck seam to hem)</i>	inches	8.5	9.2	9.9	10.6	11.4	12.1	12.8	13.5	14.3	15.2
	cm	21.5	23.4	25.2	27	28.9	30.7	32.5	34.4	36.2	38.7

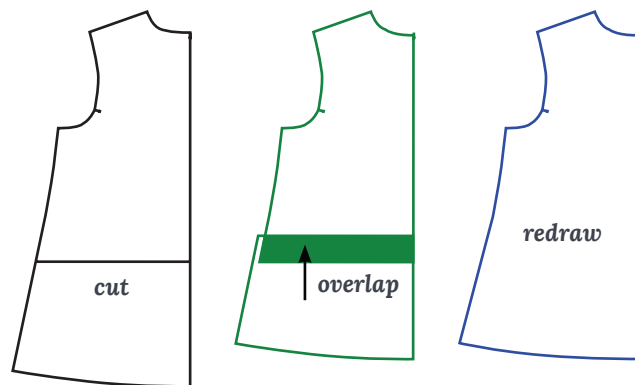
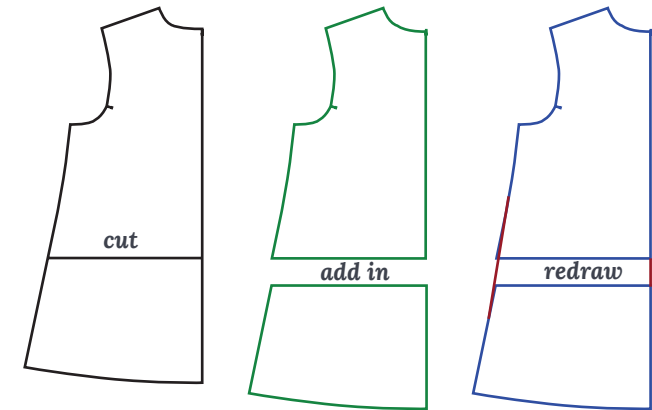


How to Adjust Sizes for a Custom Fit

Children come in a wonderful variety of shapes and sizes. If the chest and height measurements fall in different sizes, you can simply add or subtract length from your pattern using the lengthen/shorten lines supplied.

TO LENGTHEN

1. Cut across the “lengthen/shorten” lines on the front and back paper pattern pieces. Lay the cut pattern pieces onto a piece of paper.
2. Slide the pieces apart until they form a gap equal to the amount you wish to add to the length (green drawing). Use the Finished Garment Measurement Chart on the previous page for an indication of how much length to add. Tape the pattern pieces onto the paper to secure.
3. Smooth out the curve on either side of the pattern piece if required to create the new pattern piece (blue drawing).



TO SHORTEN

1. Cut across the “lengthen/shorten” lines on front and back paper pattern pieces:
2. Overlap the top piece over the bottom piece by the amount you wish to remove from the length (green drawing). Use the Finished Garment Measurement Chart on the previous page for an indication of how much length to remove. Tape the pieces together.
3. Smooth out the curve on either side of the pattern piece if required to create the new pattern piece (blue drawing).



Upcycle Inspiration

Making a Garment from Recycled Materials

Did you know? All Twig + Tale patterns are designed to be made from upcycled materials!

Here at Twig + Tale HQ, we are proudly passionate about recycling, starting as a small boutique making one-of-a-kind garments from upcycled materials under the name of Big Little.

We hope to encourage and inspire you to enjoy that same satisfaction of making something truly exquisite from discarded textiles. Here are some ideas on how to make your garment from upcycled materials - saving the planet and your pocket.



100% Wool blanket - look for finer blankets rather than the super thick ones; otherwise you may have issues turning through the shoulders. Alternatively, you could use thick fabric for the back along with lighter fabrics for the front to keep the bulk down.

Yarn - for embroidery details.

Buttons - cut from old garments.

Beautiful hand-embroidered tablecloth - so stunning for a feature dress, or use sparingly as a collar or a pocket.

Vintage floral sheet - for lining.



Wool skirt or kilt - this one is pleated, and although cut on the bias, it still yields an incredible amount of fabric! Unpick the waistband and any other stitching at the top of the skirt; then wash and steam iron before cutting.

Wooden buttons - made from a small branch that came from our beautiful native Pohutukawa tree after a storm. Our tutorial on how to make wooden buttons can be found here: <http://www.twigandtale.com/blogs/twig-and-tale-blog/handmade-wooden-buttons>

Jeans and wool trousers - work nicely although there may only be enough fabric for a smaller size or for colour-blocking. The original pockets could be sewn on the outside of a garment as is. With thoughtful placement when cutting the pattern pieces, you may also be able to use the original seams and hems as a feature.

Print + Assemble Pattern

Paper Sizes

You can print out the pattern pieces on your home printer using either US Letter paper (8 ½ x 11”) or A4 paper.

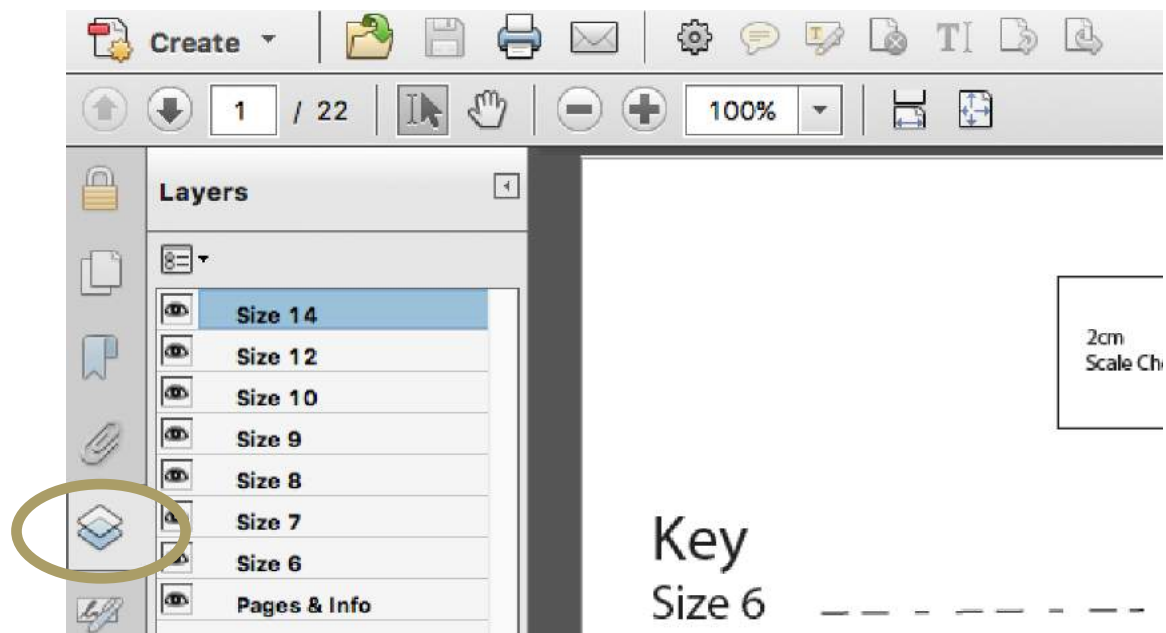
You will need the latest version of Adobe Acrobat Reader. If you do not have it, you can download it free here:

<https://get.adobe.com/reader/othersversions/>

Using Layers

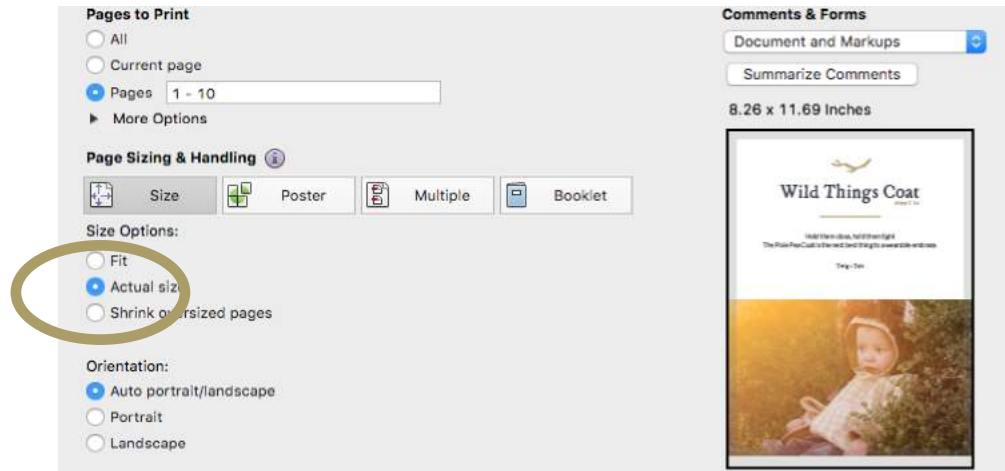
This pattern includes LAYERED pattern pieces, which allows you to choose only the sizes you wish to print. In ACROBAT READER, click on the layers icon (highlighted with a circle in the image below) while the file is open. Click on the eyeballs to turn size layers on or off. Be sure to leave the bottom layer “Pages & Info” turned on.

Print the first page of the PATTERN PIECES and ensure the 1” or 2cm square scale check boxes are correct before printing the remainder of the pattern pages.



Printer Settings

Your printer needs to be set on “Actual Size” to prevent it from scaling the pages incorrectly. You do not need to print the entire document – select only the pages you require from the chart below.



Troubleshooting

Most issues resolve themselves by printing from a desktop or laptop. Printing from an iPad or mobile device can produce irregular results.

Layers not showing up?

1. Ensure that you are looking at the ADOBE print menu, not the default print menu that pops up on your computer.
2. On a Mac, sometimes the file can get “flattened” when you save it to your desktop. Simply go to your downloads folder and open it from there.

Assembling Pattern Pieces

Cut around the outer page rectangles (some people prefer to simply cut off the bottom edge and right-hand edge of the rectangles in order to overlap the pages), and then using the Page Assembly Diagram on the following page as a guide, arrange your pages, aligning the diamonds and corner circles. Tape the pages together, and then cut out your pattern pieces.

Which Pages to Print

	Pages	Instructions
Tutorial	1-35	Save a tree! Read on your phone/tablet/laptop while sewing rather than print!
Pattern Pieces	36-47	Print page 36 first and double check the scale boxes are correct. Then go ahead and print the remainder of the pages.

Twig + Tale Video Guides

This pattern has accompanying video guides!



Video Tutorials Page

<https://www.twigandtale.com/pages/video-tutorial-wrap-dress>



Video Tutorials Page

<https://www.twigandtale.com/pages/video-tutorial-wrap-dress>



Learn To Embroider

Learn the basics of hand embroidery to embellish your handmade makes!

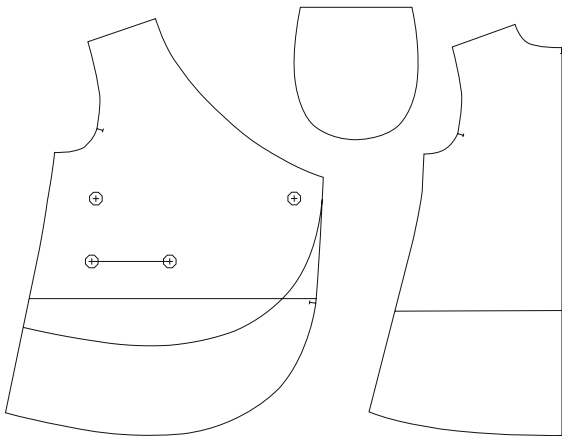
<https://www.twigandtale.com/pages/embroidery>

Sewing Instructions

Welcome!

Before we start - did you know there is a [Twig + Tale Chat Group](#) on Facebook? It is a great place to ask questions if you need help along the way, and of course show off photos of your finished items. We look forward to seeing you there! Link above not working? Copy and paste this instead:

<https://www.facebook.com/groups/522332691240127/>



Cutting Out Main Dress

Back Cut 1 exterior + 1 lining on the fold

Front Cut 2 exterior + 2 lining as mirrored pairs

Elastic Button Loops Cut two 2.5" (6cm)
Alternatively you could fasten with snaps

Pocket (optional) Cut 1 exterior + 1 lining for each pocket

If sewing the Tunic length you would need to adjust the pocket position accordingly!

Cutting Out Optional Extras

If you own the Pathfinder Vest for Babies or Children - you can mix and match the Flutter Sleeves and collar with this dress! You can also use the hoods from the Pixie Coat, Pathfinder Vest, Animal Coat or Animal Vest.

Flutter Sleeve Cut 2 exterior + 2 lining on the fold. You could also cut all sleeve pieces from lining fabric if desired

Round Hood Cut 2 exterior + 2 lining, side hood pieces as mirrored pairs

Cut 1 exterior + 1 lining hood centre panel piece

Pixie Hood Cut 2 exterior + 2 lining as mirrored pairs

Collar Cut 1 exterior + 1 lining



Image by Jocelyn Buggie

1



Optional Pocket

If you would like to add optional embroidery to your wee pocket, the time to do that is now, before you start.



Twig + Tale Embroidery Collections are the perfect accompaniment to these wee pockets. Available here: <http://twigandtale.com/collections/embroidery>

2



With right sides together, stitch the pocket pieces together with a $3/8$ " (1cm) seam allowance, leaving a gap for turning along the top edge.

3



Clip the corners to reduce the bulk once the pocket is turned through.

Trim off half of the seam allowance around the curve to help it sit nicely once turned through.

Press the seam open.

4



Turn the pocket right side out, and then using a chopstick or something similar, smooth out the edges from the inside to get a nice smooth curve along the bottom edge of the pocket.

Tuck in the seam allowance of the turning hole and press.