



Reindeer Antlers

Our gift to you - a delightful wee Christmas add-on

Twig + Tale





Twig + Tale



Website

twigandtale.com

Pattern Modifications & Inspiration

Click on *Reindeer* on the Twig + Tale blog menu for posts about this pattern.



Facebook Group

Join our group to share your photos and give & receive advice from other Twig + Tale pattern sewers.

facebook.com/groups/twigandtale

Facebook Page

facebook.com/twigandtale



Instagram

Tag your photos using **#twigandtale**
We'd love to see your creations!

instagram.com/twigandtale



Pinterest

pinterest.com/twigandtale



Twitter

twitter.com/taletwig



Mailing List

Sign up for exclusive pattern release notifications, inspiration and reads.

Scroll to the bottom of the homepage at www.twigandtale.com to sign up



Email

hello@twigandtale.com

Contents

This table of contents is “clickable” - simply click on the item you want to read and it will take you right there.

Photo Credits 3

View Diagrams

Options 4

Before you Begin

Icons 5

Save a Tree! 5

Navigation Bar & Quick Links 5

Gather Supplies

Suggested Fabrics 6

Other Supplies & Notions 6

Upcycle Guide

Making a Garment from Recycled Materials 6

Print + Assemble Pattern

Paper Sizes 7

Which Pages to Print 7

Printer Settings 7

Sewing Instructions

Cutting Out 8

Sewing the Antlers 9

Sew the Ears 9

Attaching the Antlers and Ears 9

Inspiration 11

Terms of Use

This pattern and its instructions are protected by copyright law. Please do not email copies to your friends or family; instead, refer them to twigandtale.com so they can purchase a copy for themselves. I rely on the honesty of my customers to support my shop, so thank you in advance for respecting my copyright.

Small home-based handmade businesses selling items on Etsy or similar are welcome to sell products made from this pattern, with credit to Twig + Tale within your online listing and garment tag.

Photo Credits

Cover image by Zesty Orange Photography

The images throughout the tutorial are courtesy of Lisa, Olesya, Jessica, Valérie, Leah, Ann & Andrey.

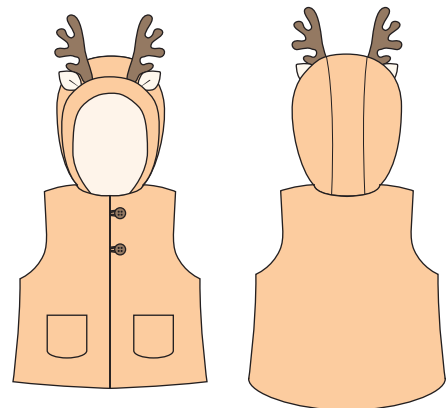
Many thanks, ladies!

View Diagrams

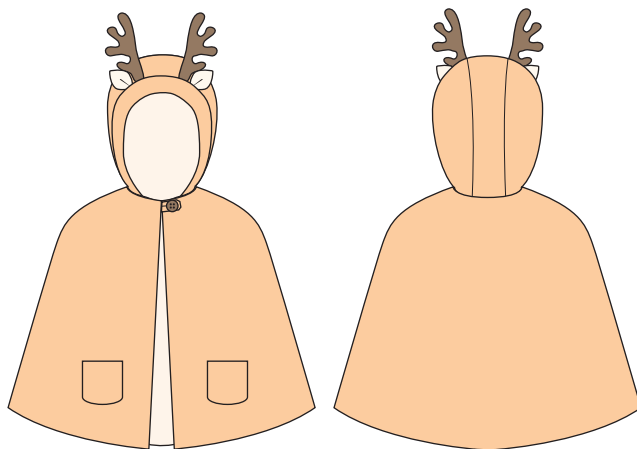
Click on the garment name to view each pattern online



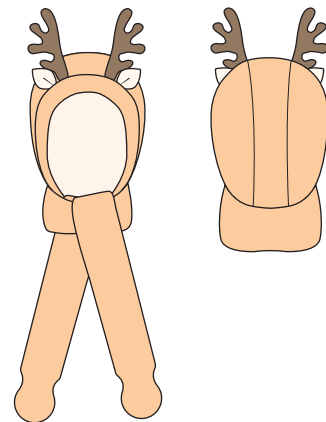
 ANIMAL COAT



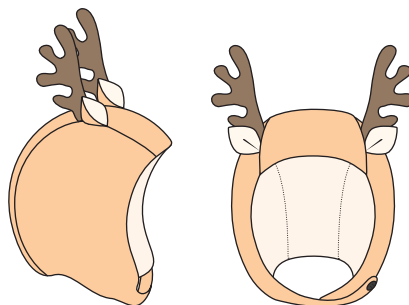
 ANIMAL VEST



 ANIMAL CAPE



 ANIMAL HOODED SCARF



 EVERGREEN BONNET

Before you Begin

Add-On Inclusions

This pattern is a Reindeer Antlers Add-on or Expansion Pack for the Animal Coat, Cape, Vest, Hooded Scarf and Bonnet patterns. **You will need to own a copy of one of these patterns in order to use this Add-on.** You will find them here: <http://twigandtale.com/collections/wild-things>

Pattern Pieces

Pattern pieces include: Reindeer antlers and Reindeer ears.

Icons



Helpful tips.



Click on the **bold green** word, to navigate directly to the page indicated.



I recommend reading this pattern through entirely to begin with. This add-on references your original Animal pattern so do have a read through to familiarise yourself. Better to have everything organised before you start!

Save a Tree!

Save a tree! This tutorial is designed to be viewed on an electronic reading device such as an iPad or phone while sewing.

Print Only What You Need

Use the layers feature to select only the size you need, and print only the pages you require for your desired option. This is further explained in the Printing Instructions.

Navigation Bar & Quick Links

The “Quick Link” section of the navigation bar at the bottom of each page helps you easily navigate to the most used sections of the tutorial. For example if you wish to go to the contents page, simply hover over the word “CONTENTS” until you see the little hand appear - click on it, and there you are!

On the right-hand side you will see the Pattern Name. When you click on this, it will take you to the Twig + Tale blog, where you can view all blog posts written about this pattern.



CONTENTS
GARMENT OPTIONS
SUPPLIES

PRINTING INFO
SEWING INSTRUCTIONS
INSPIRATION



www.twigandtale.com
Reindeer Add-on

Upcycle Guide

Making a Garment from Recycled Materials

Did you know? All Twig + Tale patterns are designed to be made from upcycled materials! Here at Twig + Tale HQ, we are proudly passionate about recycling, starting as a small boutique making one-of-a-kind garments from upcycled materials under the name of Big Little.

We hope to encourage and inspire you to enjoy that same satisfaction of making something truly exquisite from discarded textiles. Here are some ideas on how to make your garment from upcycled materials - saving the planet and your pocket.



Pure linen hand embroidery in Christmassy reds for fun Reindeer antlers. \$1

Scraps of leather or suede from old coats for ear detailing. \$5

Glittery sequin fabric leftover from making a dress would add a lovely festive touch. \$ free

Vintage red and white stripe cotton - I found a few metres of this fabric at the second hand store, new. \$3

Gather Supplies

Suggested Fabrics

For the Reindeer antlers you will need to use a light weight cotton, quilting cotton or something of a similar weight. With anything heavier than this, you will struggle to turn them out after sewing.

Other Supplies & Notions

- Pipe cleaners
- Stuffing for the Antlers

Print + Assemble Pattern

Paper Sizes

You can print out the pattern pieces on your home printer using either US Letter paper (8 ½ x 11”) or A4 paper.

Which Pages to Print

Reindeer Pattern Pieces	Page 12
-------------------------	---------

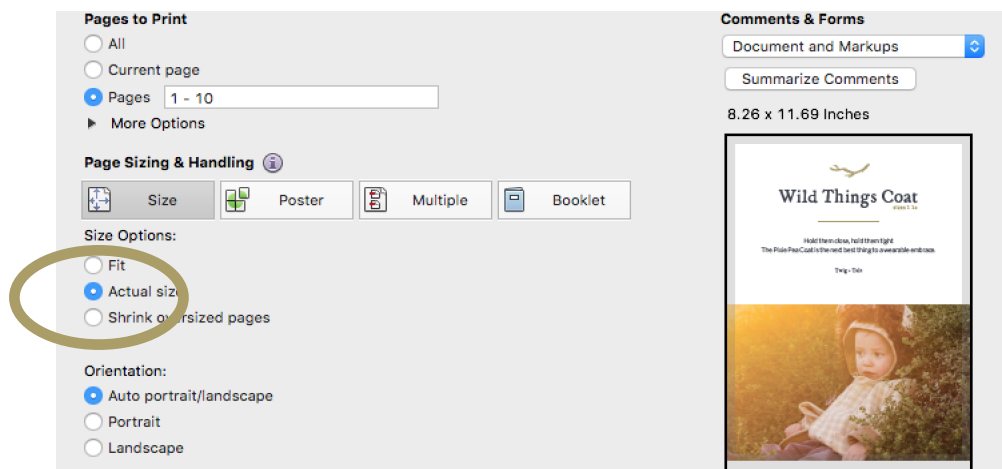


You will need the latest version of Adobe Acrobat Reader. If you do not have it, you can download it free here:

<https://get.adobe.com/reader/othersversions/>

Printer Settings

Your printer needs to be set on “Actual Size” to prevent it from scaling the pages incorrectly. You do not need to print the entire document - select only the pages you require from the chart below.



Sewing Instructions

Welcome!

THIS IS AN ADD ON FILE - You will need to use your existing Animal garment pattern pieces in order to use this add-on.

Before we start - did you know there is a **Twig + Tale Community Sewing Group on Facebook**? It is a great place to ask questions if you need help along the way, and of course show off pics of your finished items. We look forward to seeing you there! Link above not working?

Copy and paste this instead: <https://www.facebook.com/groups/522332691240127/>



Cutting Out

This tutorial covers the construction of the wee Reindeer antlers. Please construct the Reindeer ears as per the regular ear instructions in your original Animal pattern.

Cut out your Reinder Antler paper pattern piece. You will see a solid cutting line and a dotted sewing line.

Roughly cut out your two pairs of antlers, remembering to cut two mirrored pairs.

You don't need to cut them out perfectly as you will be trimming off the allowance later.

Tape your paper pattern piece up to the window and one of your fabric pieces on top (wrong side facing you).

Mark the dotted "sewing" line onto your fabric piece.

1



2



3



4



Sewing the Antlers

Set your machine to a smallish stitch.

Sew around the dotted line you drew on, ensuring you backstitch well at beginning and end.

Trim a good half of the seam allowance off, and then snip into the tight corners, quite close to the stitching line, but not cutting the stitches.

If you have pinking shears, they would be good to use here.

Turn right side out. This is quite tricky and a little fiddly - but if you have used a lightweight cotton, it will come through.

I find using a pair of long tweezers or haemostats works really well for this (and for stuffing too!)

Take your pipe cleaner and make a little loop at one end. Poke it right up into the longest point of the antler.

Stuff using tiny bits of stuffing at a time. Poke them right to the ends before adding more.

The first antler is done! Repeat for the other antler.

Sew the Ears

Construct the Reindeer ears as per the instructions in your original Animal pattern.

Attaching the Antlers and Ears

If the Animal garment you are making has a Front Band piece, then sew the antlers in next to the ears. Otherwise sew them in just behind the ears, in the seams of the center panel as shown in this image.

You may wish to trim some of the base off the Antlers if they are a little top heavy.

The pipe cleaners need to be sewn into the seam for stability and then bent up when garment is complete.

5



If you are adding antlers to an existing garment, you can turn under the edges, stuff the antlers right to the edge and hand stitch them onto your finished hood.

The pipe cleaner will keep the antler itself sturdy; however, you will need to manipulate the end of the pipe cleaner so it is within the bottom of the antler before hand sewing. With the pipe cleaners not being sewn into seams, the antlers may flop a little, but they will still look sweet.

6



Now it is time to show it off - join the **Twig + Tale Community Sewing Group on Facebook** and share it with us!

Link above not working?

<https://www.facebook.com/groups/522332691240127/>

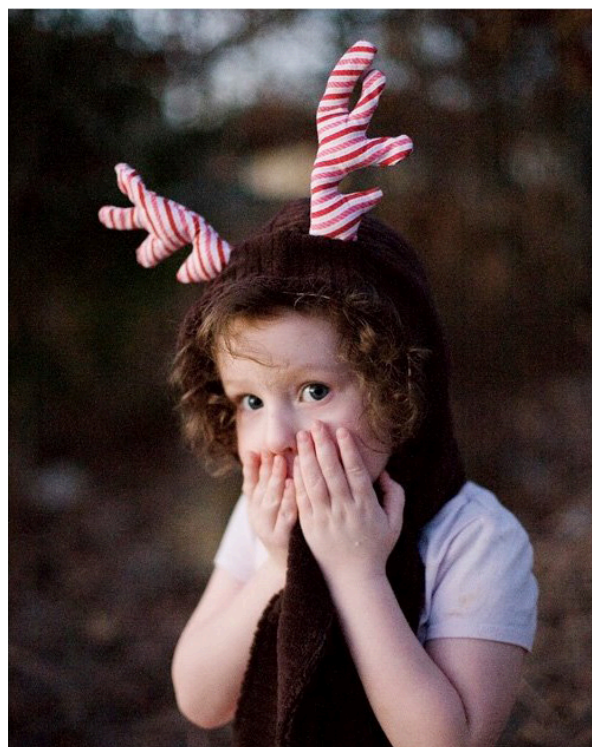
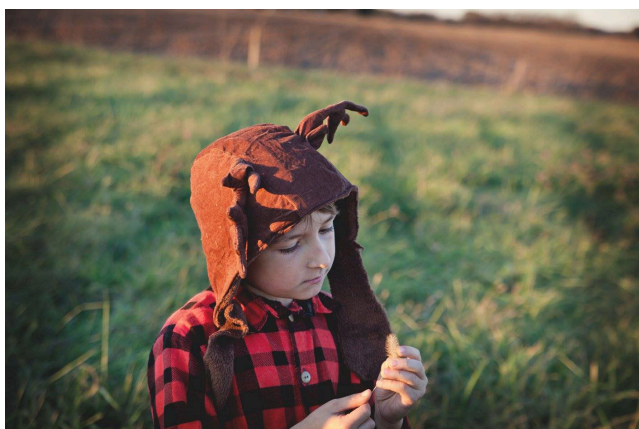


#sewalltheanimals
#twigandtale



Inspiration

#twigandtale #sewalltheanimals



Size Notes

This is a one-size-fits-most Reindeer Antler & Ear pattern template.

You may wish to reduce the size if making a baby sized garment.

