



Print At Home Pattern Pieces

BREEZE SHIRT - POCKET PIECES - WOMEN'S/CURVED FIT SIZE 0-22 (A-L)

Use this set of pattern pieces if you wish to print on A4 or US Letter paper.

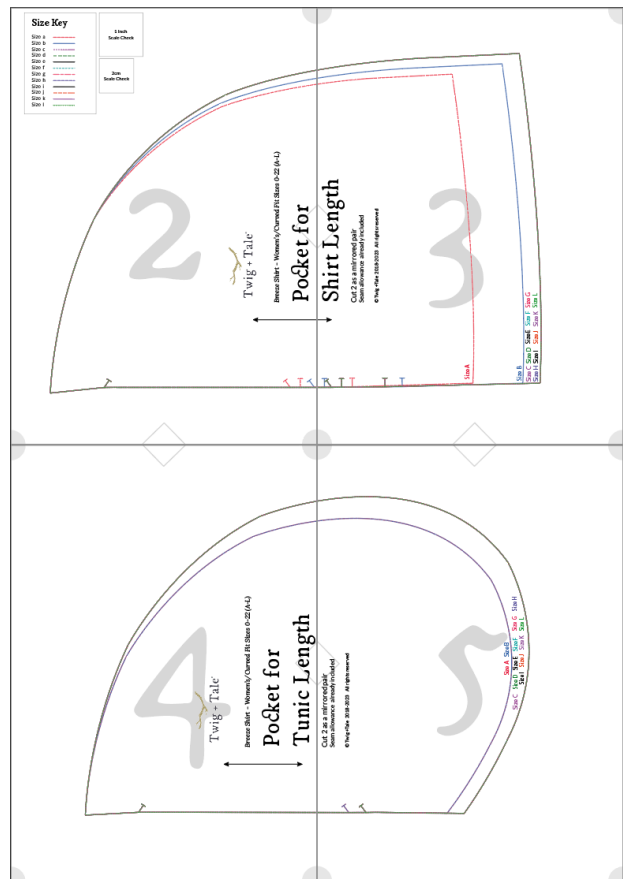
How to Assemble the Pattern

Trim off the bottom and right-hand edge of each page. Assembling the pattern is done from left to right, and top to bottom. Each page is identified by a letter and includes alignment diamonds and corner circles. Tape the pages together, and then cut out the pattern pieces in your desired size.

View the READ FIRST file for detailed printing instructions.

We recommended to use layers with this pattern.

Print Guide	Pages
Pocket for Shirt Length	2-3
Pocket for Tunic Length	4-5



Size Key

- Size a -----
- Size b -----
- Size c -----
- Size d -----
- Size e -----
- Size f -----
- Size g -----
- Size h -----
- Size i -----
- Size j -----
- Size k -----
- Size l -----

1 Inch
Scale Check

2cm
Scale Check

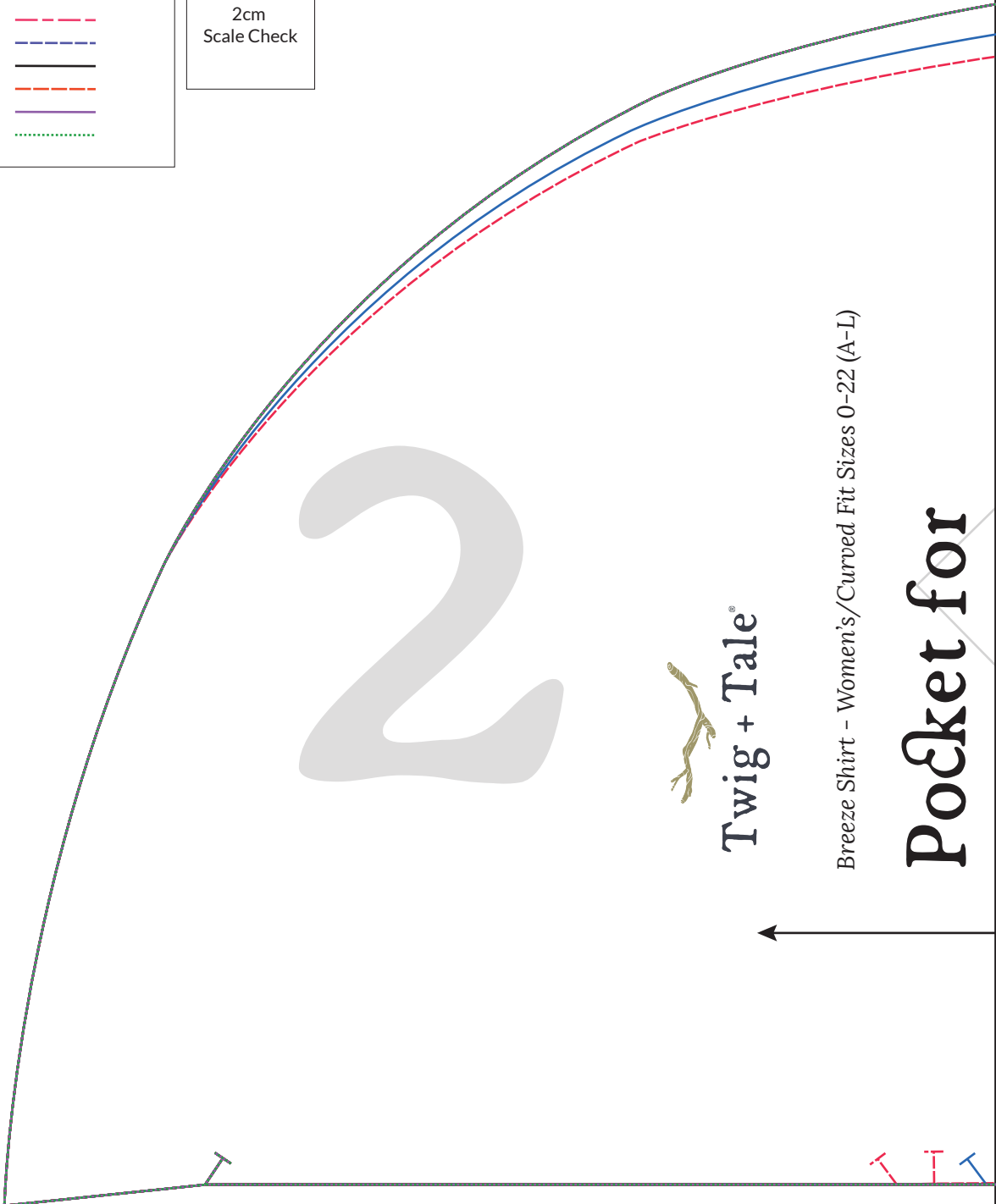
2



Twig + Tale®

Breeze Shirt - Women's/Curved Fit Sizes 0-22 (A-L)

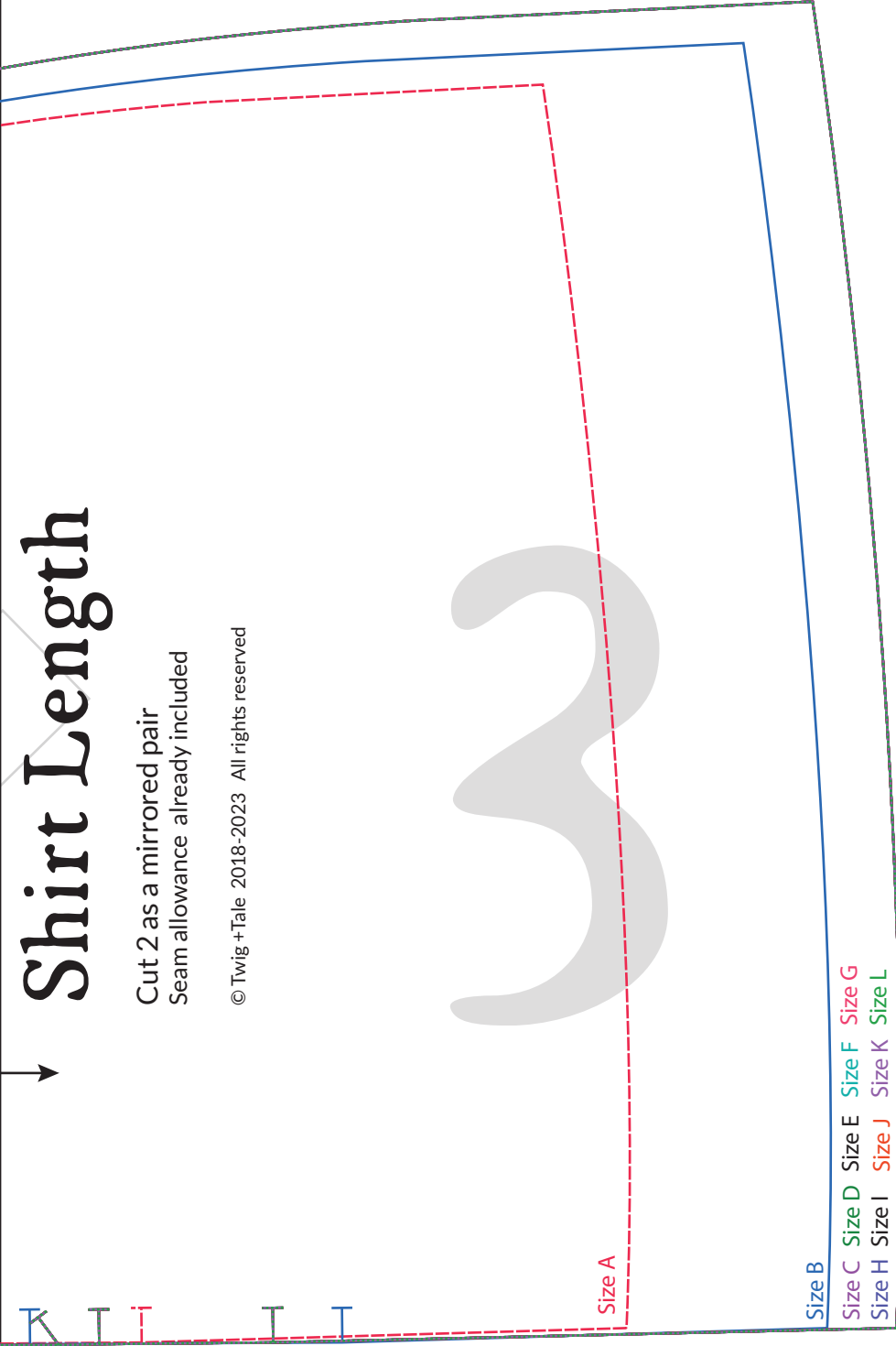
Pocket for



Shirt Length

Cut 2 as a mirrored pair
Seam allowance already included

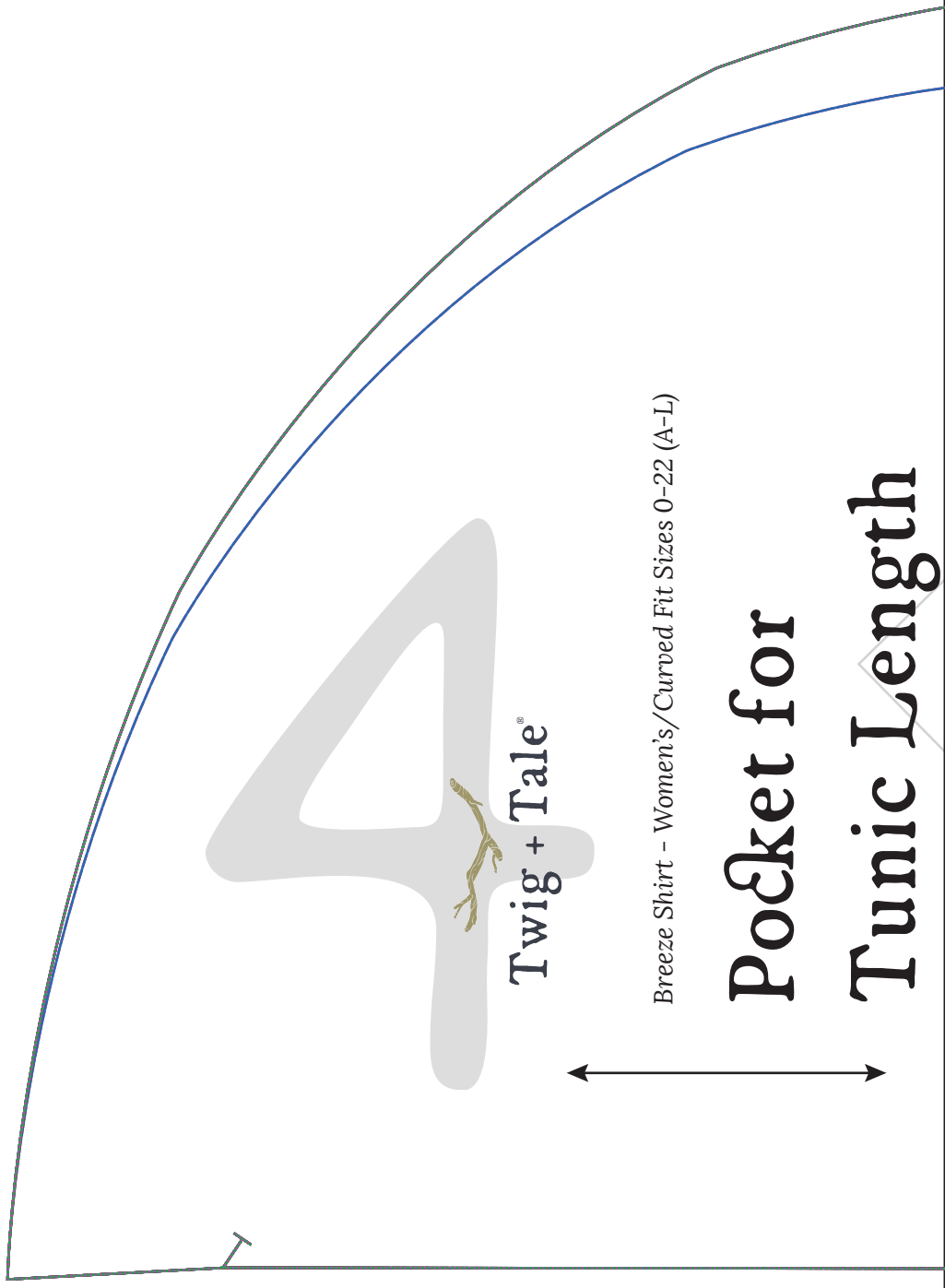
© Twig + Tale 2018-2023 All rights reserved



Size A

Size B

- Size C
- Size D
- Size E
- Size F
- Size G
- Size H
- Size I
- Size J
- Size K
- Size L



Twig + Tale®

Breeze Shirt - Women's/Curved Fit Sizes 0-22 (A-L)

Pocket for
Tunic Length

Cut 2 as a mirrored pair
Seam allowance already included

© Twig + Tale 2018-2023 All rights reserved



Size A Size B
Size C Size D Size E Size F Size G Size H
Size I Size J Size K Size L