



Print At Home Pattern Pieces

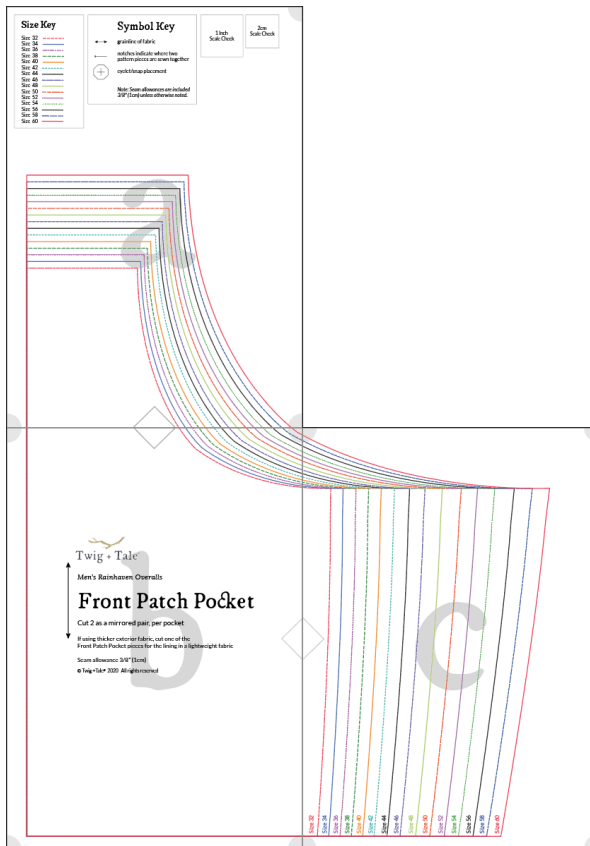
RAINHAVEN OVERALLS - FRONT PATCH POCKET

Use these pattern pieces to print on A4 or US Letter paper.

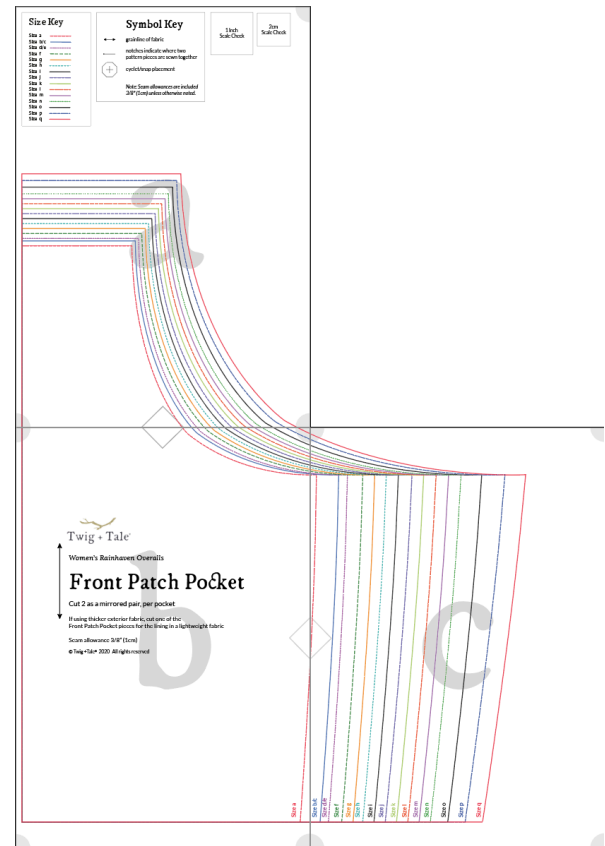
How to Assemble the Pattern

Trim off the bottom and right-hand edge of each page. Assembling the pattern is done from left to right, and top to bottom. Each page is identified by a letter and includes alignment diamonds and corner circles. Tape the pages together, and then cut out the pattern pieces in your desired size.

MEN'S LAYOUT



WOMEN'S LAYOUT



Size Key

Size 32	-----
Size 34	—————
Size 36	-----
Size 38	-----
Size 40	—————
Size 42	-----
Size 44	—————
Size 46	-----
Size 48	—————
Size 50	-----
Size 52	-----
Size 54	-----
Size 56	—————
Size 58	-----
Size 60	—————

Symbol Key



grainline of fabric



notches indicate where two pattern pieces are sewn together

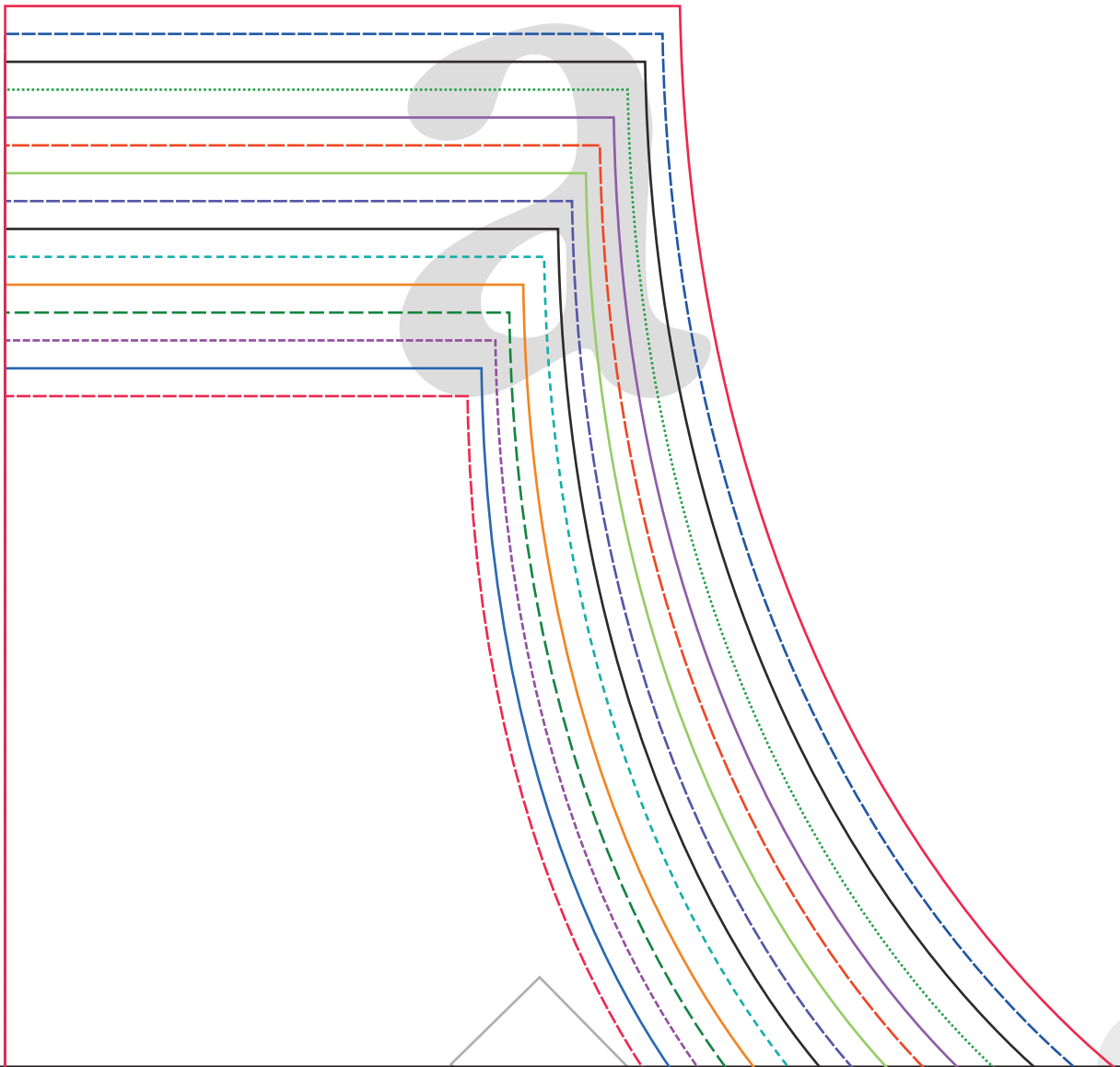


eyelet/snap placement

*Note: Seam allowances are included
3/8" (1cm) unless otherwise noted.*

1 Inch
Scale Check

2cm
Scale Check





Twig + Tale®

Men's Rainhaven Overalls

Front Patch Pocket

Cut 2 as a mirrored pair, per pocket

If using thicker exterior fabric, cut one of the Front Patch Pocket pieces for the lining in a lightweight fabric

Seam allowance 3/8" (1cm)

© Twig +Tale® 2020 All rights reserved

Size 32

Size 34

Size 36

Size 38

Size 40

Size 42

Size 44

Size 46

Size 48

Size 50

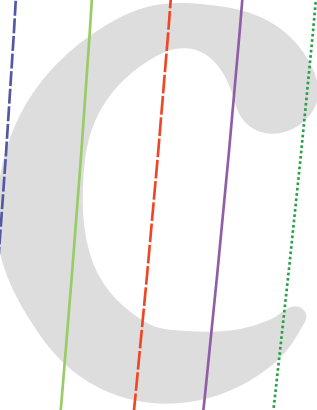
Size 52

Size 54

Size 56

Size 58

Size 60



Size Key

Size a	Red dashed line
Size b/c	Blue solid line
Size d/e	Purple dashed line
Size f	Green dashed line
Size g	Orange solid line
Size h	Cyan dashed line
Size i	Black solid line
Size j	Blue dashed line
Size k	Light green solid line
Size l	Red dashed line
Size m	Purple solid line
Size n	Black dotted line
Size o	Black solid line
Size p	Blue dashed line
Size q	Red solid line

Symbol Key



grainline of fabric



notches indicate where two pattern pieces are sewn together

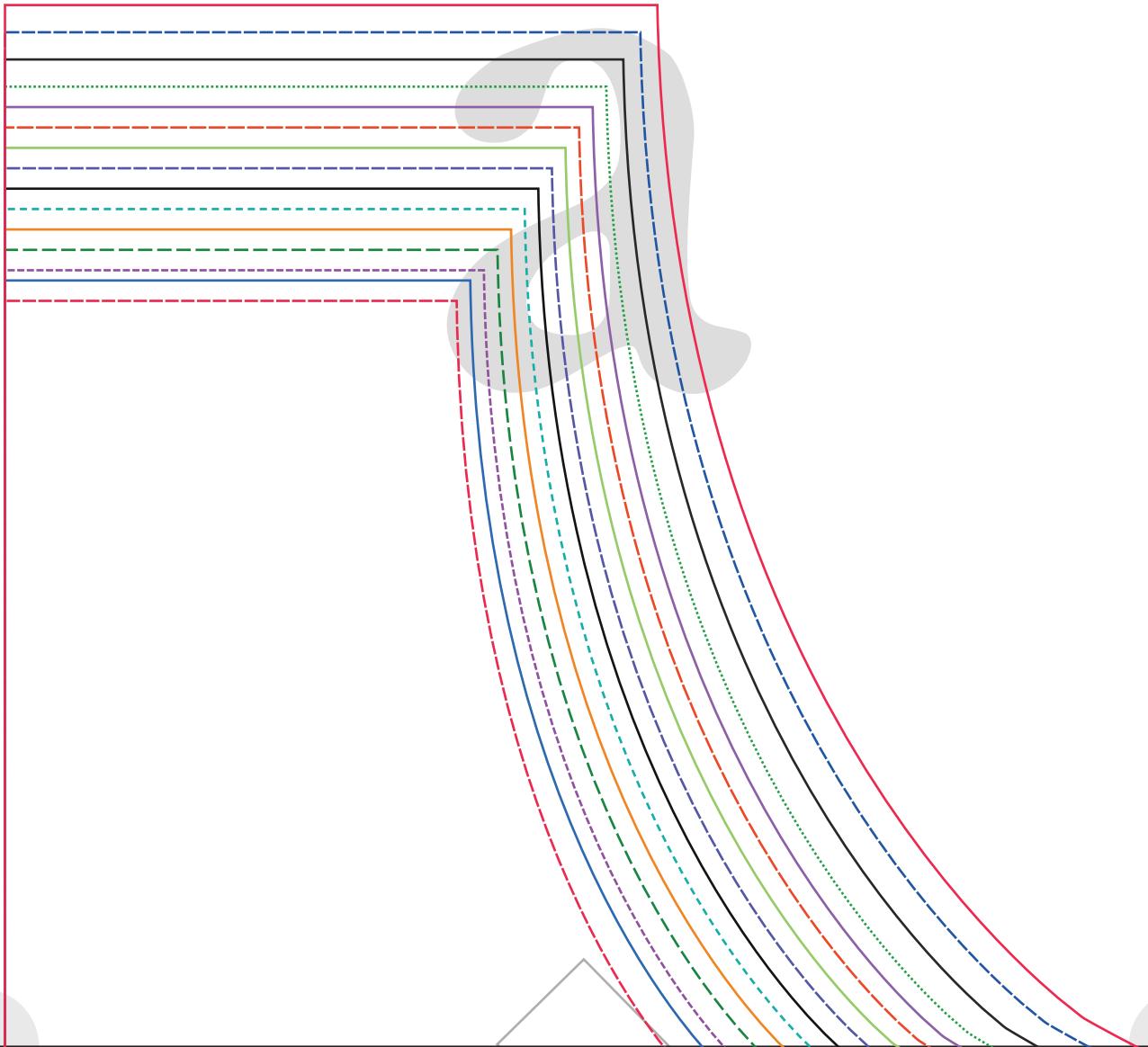


eyelet/snap placement

*Note: Seam allowances are included
3/8" (1cm) unless otherwise noted.*

1 Inch
Scale Check

2cm
Scale Check





Twig + Tale®

Women's Rainhaven Overalls

Front Patch Pocket

Cut 2 as a mirrored pair, per pocket

If using thicker exterior fabric, cut one of the Front Patch Pocket pieces for the lining in a lightweight fabric

Seam allowance 3/8" (1cm)

© Twig +Tale® 2020 All rights reserved

Size b/c

Size d/e

Size f

Size g

Size h

Size i

Size j

Size k

Size l

Size m

Size n

Size o

Size p

Size q

