



# Print At Home Pattern Pieces

## BREEZE SHIRT - POCKET PIECES - MEN'S/STRAIGHT FIT SIZE 30-66

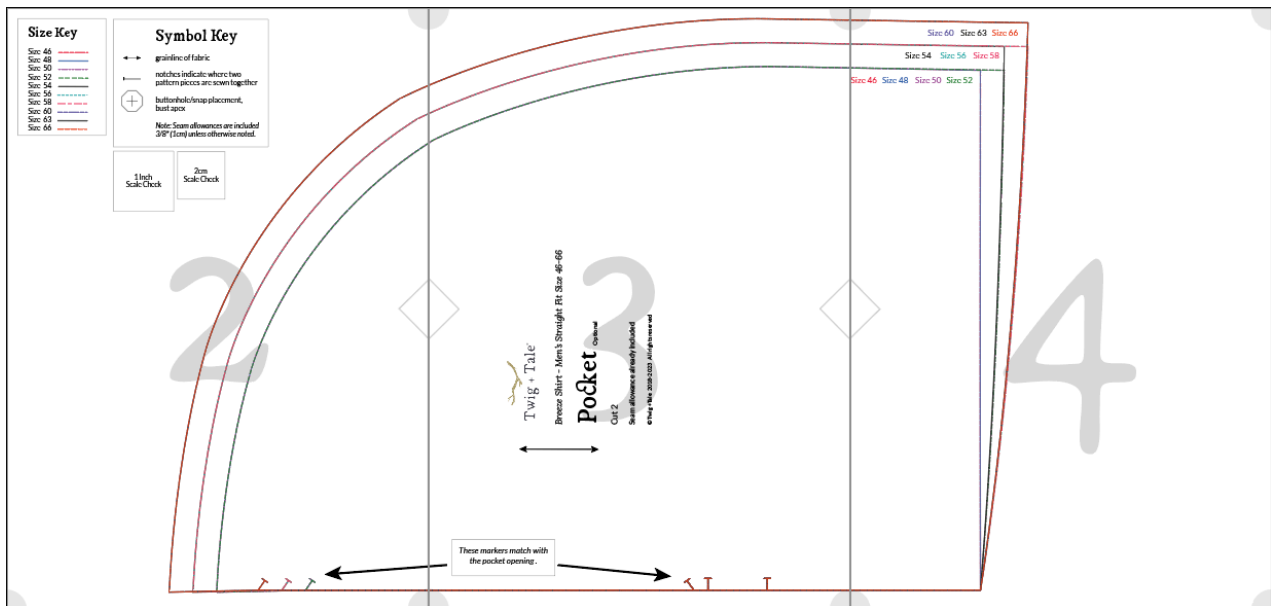
Use this set of pattern pieces if you wish to print on A4 or US Letter paper.

### How to Assemble the Pattern

Trim off the bottom and right-hand edge of each page. Assembling the pattern is done from left to right, and top to bottom. Each page is identified by a letter and includes alignment diamonds and corner circles. Tape the pages together, and then cut out the pattern pieces in your desired size.

View the READ FIRST file for detailed printing instructions.

***We recommended to use layers with this pattern.***



## Size Key

Size 46	-----
Size 48	—————
Size 50	-----
Size 52	-----
Size 54	—————
Size 56	-----
Size 58	-----
Size 60	-----
Size 63	—————
Size 66	-----

## Symbol Key



grainline of fabric



notches indicate where two pattern pieces are sewn together



buttonhole/snap placement,  
bust apex

*Note: Seam allowances are included  
3/8" (1cm) unless otherwise noted.*

1 Inch  
Scale Check

2cm  
Scale Check





**Twig + Tale®**

Breeze Shirt - Men's Straight Fit Size 46-66

**Pocket**

Optional

Cut 2

Seam allowance already included

© Twig +Tale 2018-2023 All rights reserved



*These markers match with the pocket opening.*



Size 60 Size 63 Size 66

Size 54 Size 56 Size 58

Size 46 Size 48 Size 50 Size 52

4