



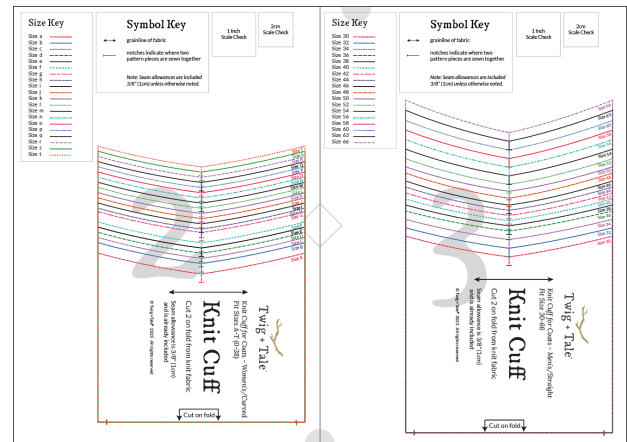
# Print At Home Pattern Pieces

## KNIT CUFF FOR COATS - ADULT SIZES

Use this set of pattern pieces if you wish to print on A4 or US Letter paper.

### How to Assemble the Pattern

Trim off the bottom and right-hand edge of each page. Assembling the pattern is done from left to right, and top to bottom. Each page is identified by a letter and includes alignment diamonds and corner circles. Tape the pages together, and then cut out the pattern pieces in your desired size.



View the READ FIRST file for detailed printing instructions.

***We recommended to use layers with this pattern.***

Print Guide	Pages
Women/Curved Fit Sizes A-T (0-38)	2
Men/Straight Fit Sizes 30-66	3

# Size Key

- Size a
- Size b
- Size c
- Size d
- Size e
- Size f
- Size g
- Size h
- Size i
- Size j
- Size k
- Size l
- Size m
- Size n
- Size o
- Size p
- Size q
- Size r
- Size s
- Size t

# Symbol Key



grainline of fabric

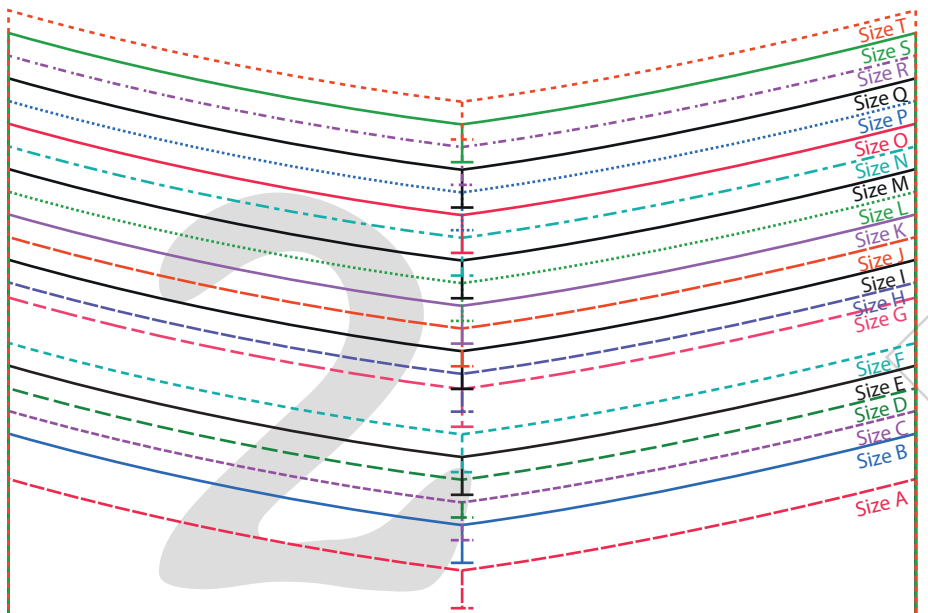


notches indicate where two pattern pieces are sewn together

*Note: Seam allowances are included 3/8" (1cm) unless otherwise noted.*

1 Inch  
Scale Check

2cm  
Scale Check



**Twig + Tale**<sup>®</sup>

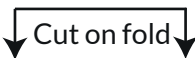
Knit Cuff for Coats - Women's/Curved  
Fit Sizes A-T (0-38)

# Knit Cuff

Cut 2 on fold from knit fabric

Seam allowance is 3/8" (1cm)  
and is already included

© Twig + Tale<sup>®</sup> 2023 All rights reserved



## Size Key

Size 30	--- (red dashed)
Size 32	— (blue solid)
Size 34	--- (purple dashed)
Size 36	--- (green dashed)
Size 38	— (black solid)
Size 40	- - - (cyan dashed)
Size 42	--- (pink dashed)
Size 44	- - - (blue dashed)
Size 46	— (black solid)
Size 48	--- (orange dashed)
Size 50	--- (purple dashed)
Size 52	... (green dotted)
Size 54	— (black solid)
Size 56	- - - (cyan dashed)
Size 58	--- (red dashed)
Size 60	... (blue dotted)
Size 63	— (black solid)
Size 66	--- (purple dashed)

## Symbol Key



grainline of fabric

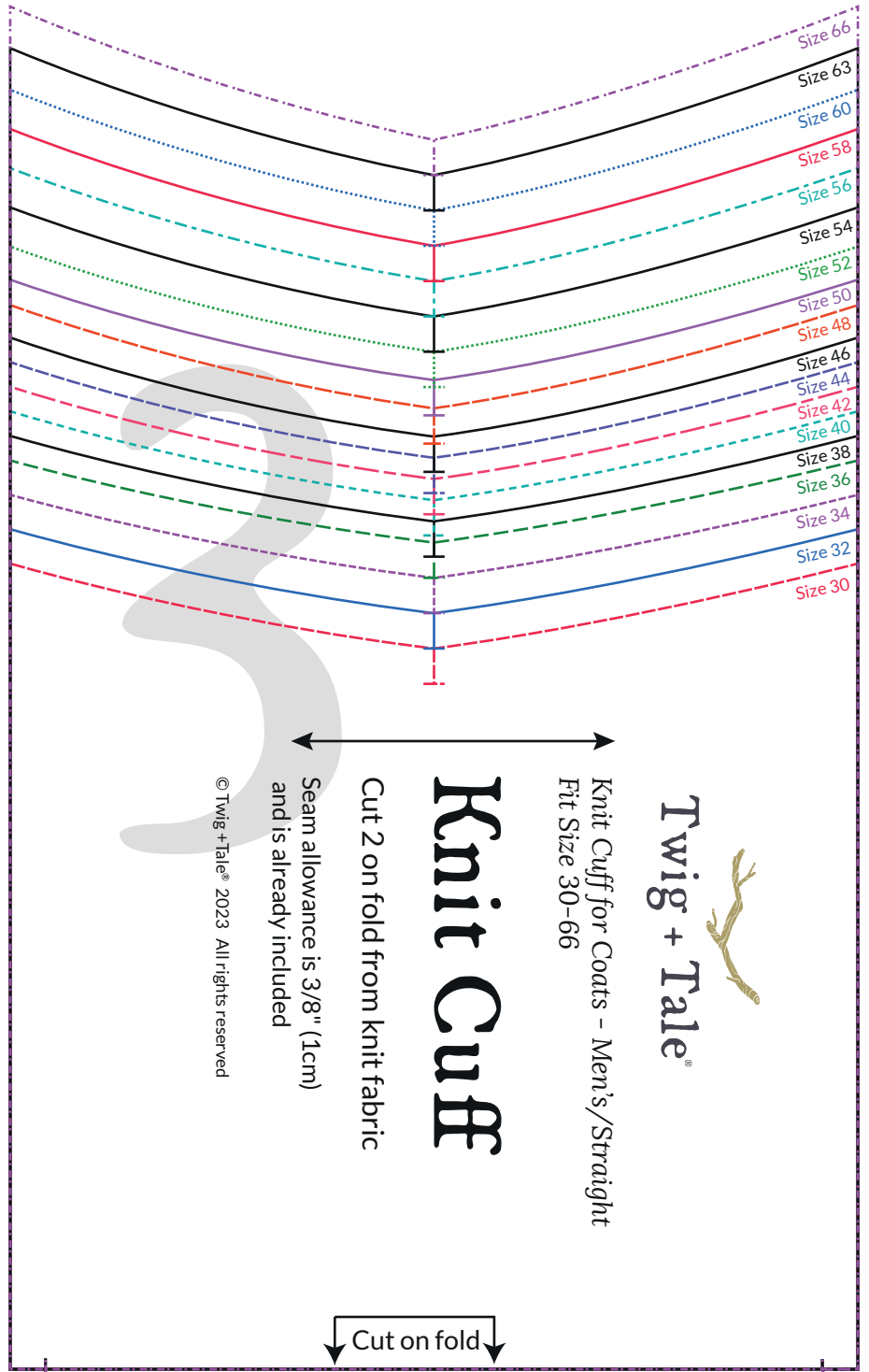


notches indicate where two pattern pieces are sewn together

*Note: Seam allowances are included  
3/8" (1cm) unless otherwise noted.*

1 Inch  
Scale Check

2cm  
Scale Check



Twig + Tale®



Knit Cuff for Coats - Men's/Straight  
Fit Size 30-66

# Knit Cuff

Cut 2 on fold from knit fabric

Seam allowance is 3/8" (1cm)  
and is already included

© Twig + Tale® 2023 All rights reserved