



Print At Home Pattern Pieces

BONUS BACK POCKET FOR COASTAL CUFFED SHORTS - WOMEN'S/CURVED FIT SIZE 0-38 (A-T)

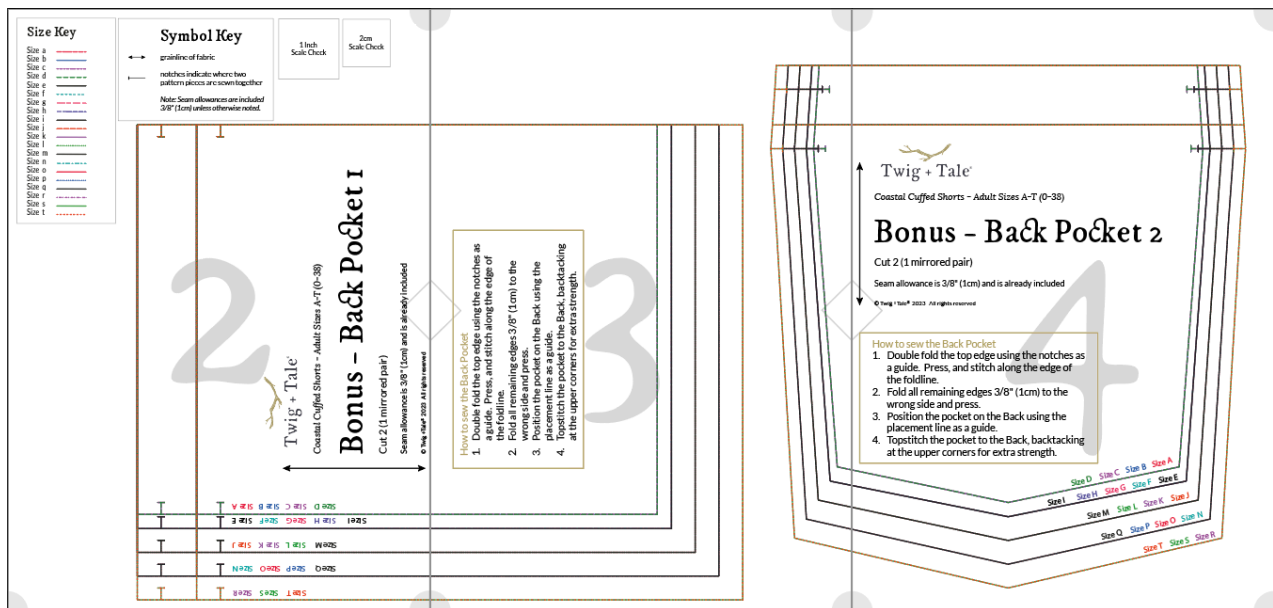
Use this set of pattern pieces if you wish to print on A4 or US Letter paper.

How to Assemble the Pattern

Trim off the bottom and right-hand edge of each page. Assembling the pattern is done from left to right, and top to bottom. Each page is identified by a letter and includes alignment diamonds and corner circles. Tape the pages together, and then cut out the pattern pieces in your desired size.

View the READ FIRST file for detailed printing instructions.

We recommended to use layers with this pattern.



Size Key

- Size a
- Size b
- Size c
- Size d
- Size e
- Size f
- Size g
- Size h
- Size i
- Size j
- Size k
- Size l
- Size m
- Size n
- Size o
- Size p
- Size q
- Size r
- Size s
- Size t

Symbol Key



grainline of fabric

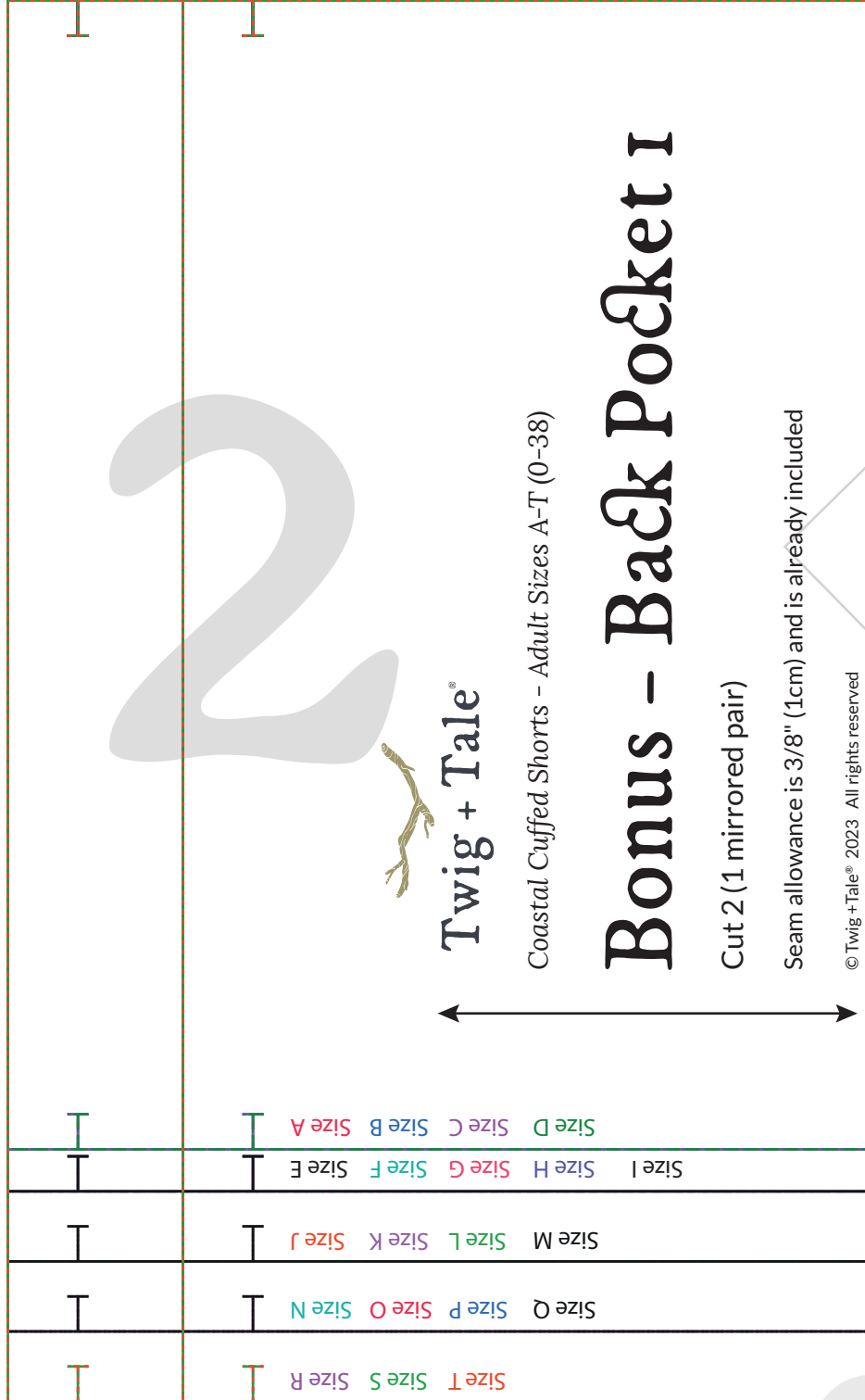


notches indicate where two pattern pieces are sewn together

Note: Seam allowances are included 3/8" (1cm) unless otherwise noted.

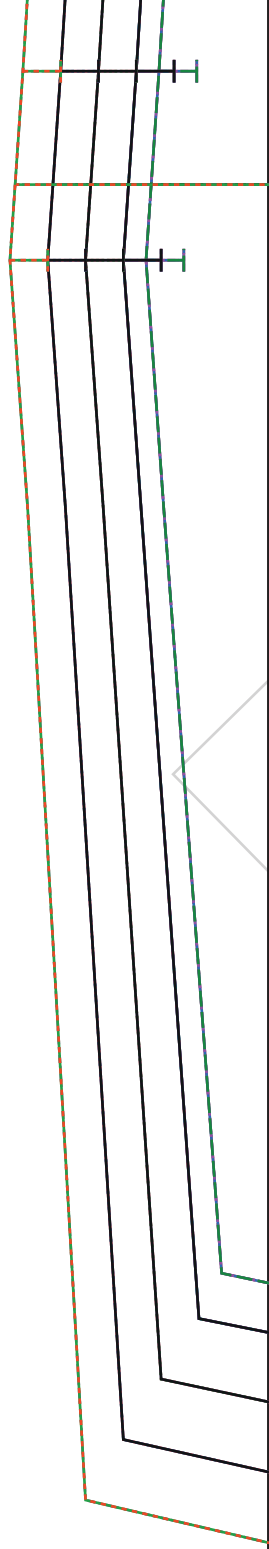
1 Inch
Scale Check

2cm
Scale Check



How to sew the Back Pocket

1. Double fold the top edge using the notches as a guide. Press, and stitch along the edge of the foldline.
2. Fold all remaining edges $3/8"$ (1cm) to the wrong side and press.
3. Position the pocket on the Back using the placement line as a guide.
4. Topstitch the pocket to the Back, backtacking at the upper corners for extra strength.





Twig + Tale®

Coastal Cuffed Shorts - Adult Sizes A-T (0-38)

Bonus - Back Pocket 2

Cut 2 (1 mirrored pair)

Seam allowance is 3/8" (1cm) and is already included

© Twig + Tale® 2023 All rights reserved

How to sew the Back Pocket

1. Double fold the top edge using the notches as a guide. Press, and stitch along the edge of the foldline.
2. Fold all remaining edges 3/8" (1cm) to the wrong side and press.
3. Position the pocket on the Back using the placement line as a guide.
4. Topstitch the pocket to the Back, backtacking at the upper corners for extra strength.

Size D Size C Size B Size A
Size I Size H Size G Size F Size E
Size M Size L Size K Size J
Size Q Size P Size O Size N
Size T Size S Size R