



# Print At Home Pattern Pieces

## BONUS BACK POCKET FOR SHORE PANTS - MEN'S/STRAIGHT FIT SIZE 30-66

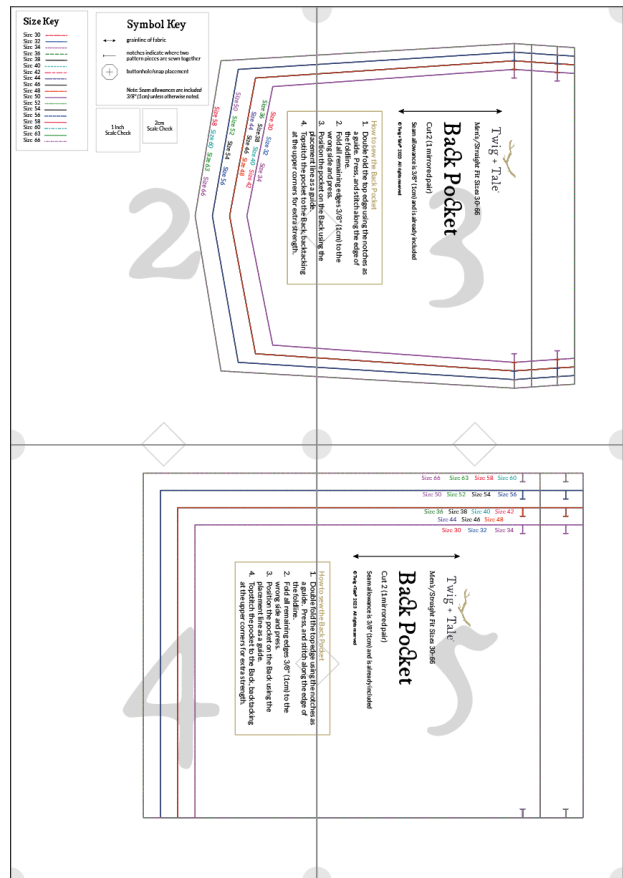
Use this set of pattern pieces if you wish to print on A4 or US Letter paper.

### How to Assemble the Pattern

Trim off the bottom and right-hand edge of each page. Assembling the pattern is done from left to right, and top to bottom. Each page is identified by a letter and includes alignment diamonds and corner circles. Tape the pages together, and then cut out the pattern pieces in your desired size.

View the READ FIRST file for detailed printing instructions.

***We recommended to use layers with this pattern.***



## Size Key

Size 30	---
Size 32	—
Size 34	- - -
Size 36	- · - · -
Size 38	—
Size 40	- · - · -
Size 42	---
Size 44	- - -
Size 46	—
Size 48	---
Size 50	—
Size 52	· · · · ·
Size 54	—
Size 56	- - -
Size 58	—
Size 60	- · - · -
Size 63	—
Size 66	· · · · ·

## Symbol Key



grainline of fabric



notches indicate where two pattern pieces are sewn together



buttonhole/snap placement

*Note: Seam allowances are included 3/8" (1cm) unless otherwise noted.*

1 Inch  
Scale Check

2cm  
Scale Check

placement line as a guide.  
4. Topstitch the pocket to the Back, backtacking at the upper corners for extra strength.

2



**Twig + Tale**<sup>®</sup>

Men's/Straight Fit Sizes 30-66

# Back Pocket

Cut 2 (1 mirrored pair)

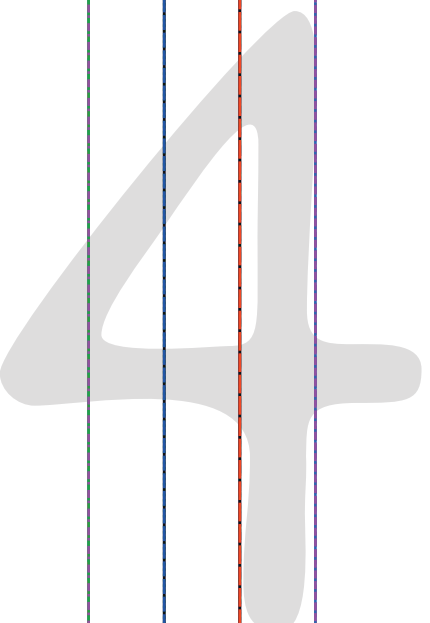
Seam allowance is 3/8" (1cm) and is already included

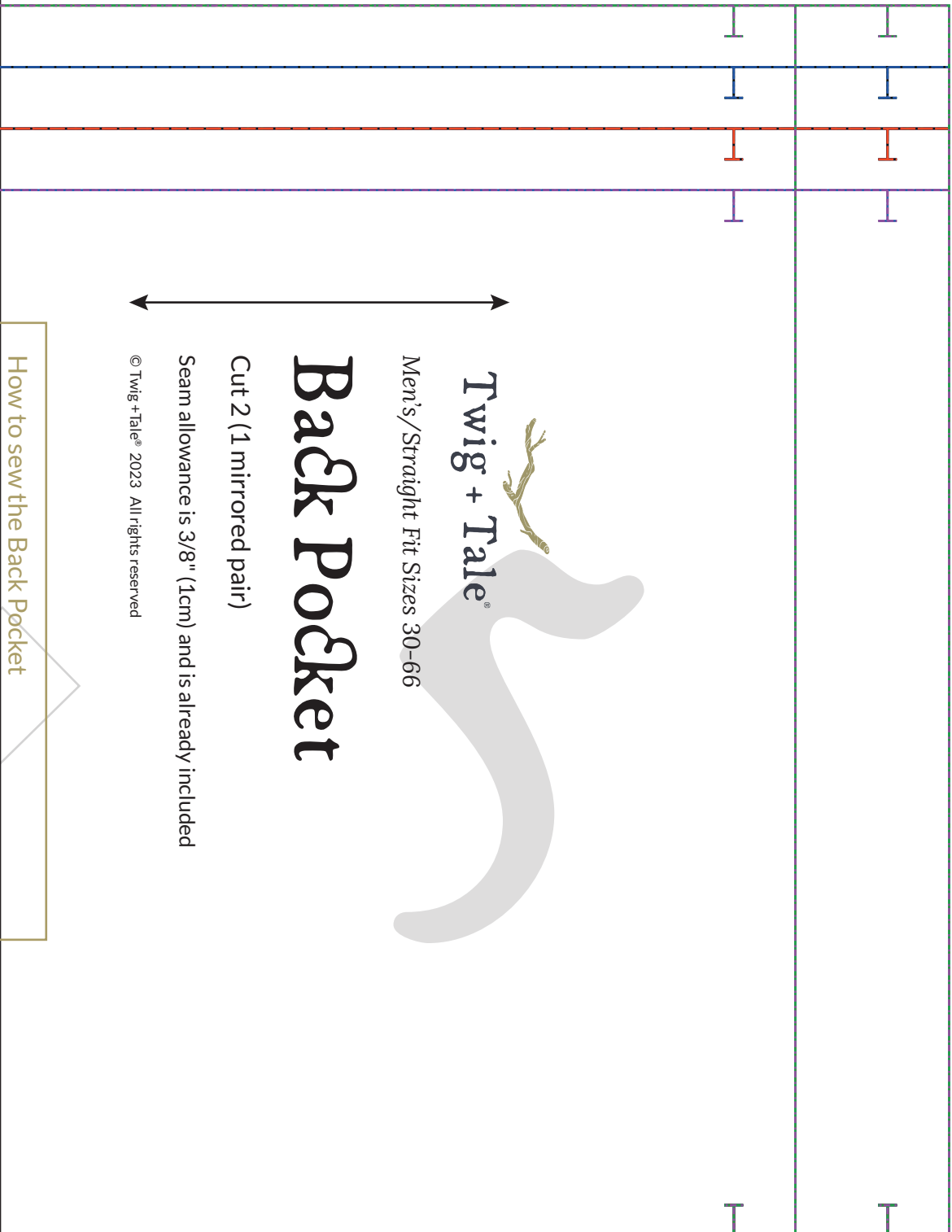
© Twig + Tale<sup>®</sup> 2023 All rights reserved

## How to sew the Back Pocket

1. Double fold the top edge using the notches as a guide. Press, and stitch along the edge of the foldline.
2. Fold all remaining edges 3/8" (1cm) to the wrong side and press.
3. Position the pocket on the Back using the

1. Double fold the top edge using the notches as a guide. Press, and stitch along the edge of the foldline.
2. Fold all remaining edges  $3/8$ " (1cm) to the wrong side and press.
3. Position the pocket on the Back using the placement line as a guide.
4. Topstitch the pocket to the Back, backtacking at the upper corners for extra strength.





**Twig + Tale**

Men's/Straight Fit Sizes 30-66

# Back Pocket

Cut 2 (1 mirrored pair)

Seam allowance is 3/8" (1cm) and is already included

© Twig + Tale® 2023 All rights reserved

How to sew the Back Pocket