



ASSEMBLY INSTRUCTIONS

PARTS CHECK LIST

WOODEN PARTS BAG

- Base
- Posts (2)
- Arm (1)
- Basket Sides (2)
- Rests (2)
- Face

MISCELLANEOUS PARTS BAG

- Large Rod (1)
- Medium Rod (6)
- Small Rod (1)
- O-rings (25)
- Sticky Feet (4)
- Hook Wire (1)
- U-wire (1)
- Chain & Jump Ring (1)
- Cord
- Projectiles



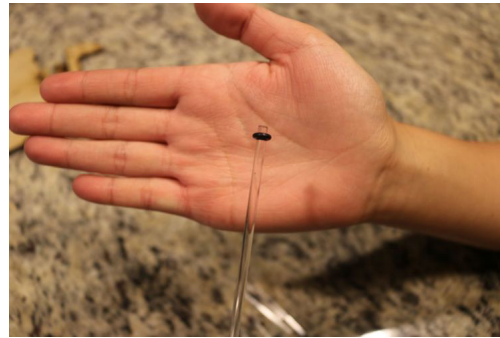
*** General use of the Pennypult - especially when handling parts or launching projectiles - requires adult supervision in the company of children and/or pets ***

GET STARTED - PART I



STEP 1A

Carefully remove any sticker backing on the wooden pieces by lifting from the corners. You may also need to push some pieces out if they haven't already fallen out on their own.



STEP 1B

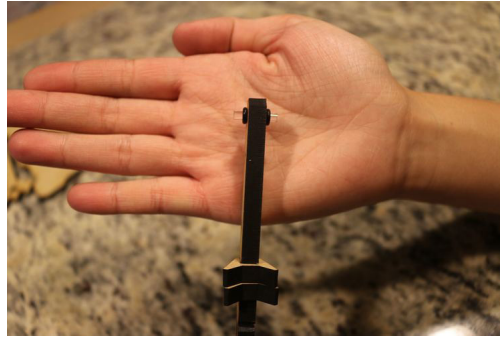
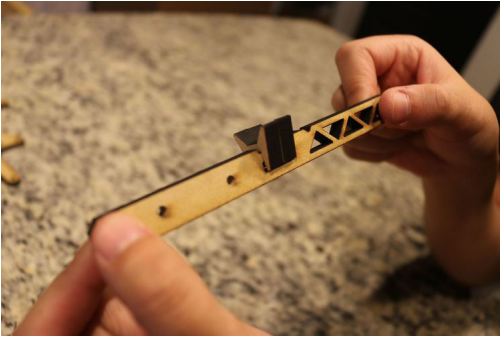
Take an acrylic rod and push it through all of the rod holes that can be found on the arm, 2 posts, and 2 basket sides. Then take an o-ring and slide it onto one end of each acrylic rod: large (1), medium (6), and small (1).



STEP 1C

Insert the hook wire into the face piece by putting the longer end of the hook through the center hole. Take your time as the wire may bend if handled too quickly.

GET STARTED - PART II



STEP 1D

Push down both projectile rests into the center of the arm.
Then insert the small acrylic rod through the last arm hole
and secure the other end with an o-ring.

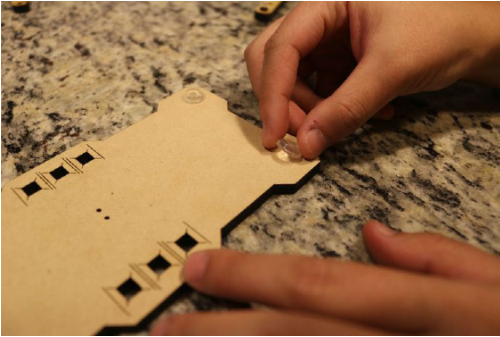


STEP 1E

Snap the face piece onto the arm.

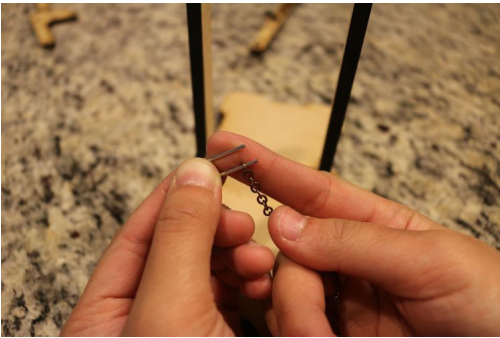


ASSEMBLY - PART I



STEP 2A

Place a sticky feet on each corner at the bottom of the base.
Then snap the posts into the sides at the top of the base.



STEP 2B

Hook the U-wire through the last chain link, and then push the wire through the top of the base. Next, flip the base over and press the wire ends down in opposite directions. Lastly, using the cord, tie a knot onto the jump ring.

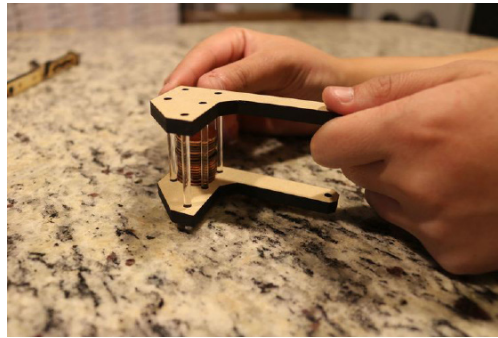


ASSEMBLY - PART II



STEP 2C

Insert 5 medium acrylic rods through one basket side.
Gently flip the basket side over onto your surface.

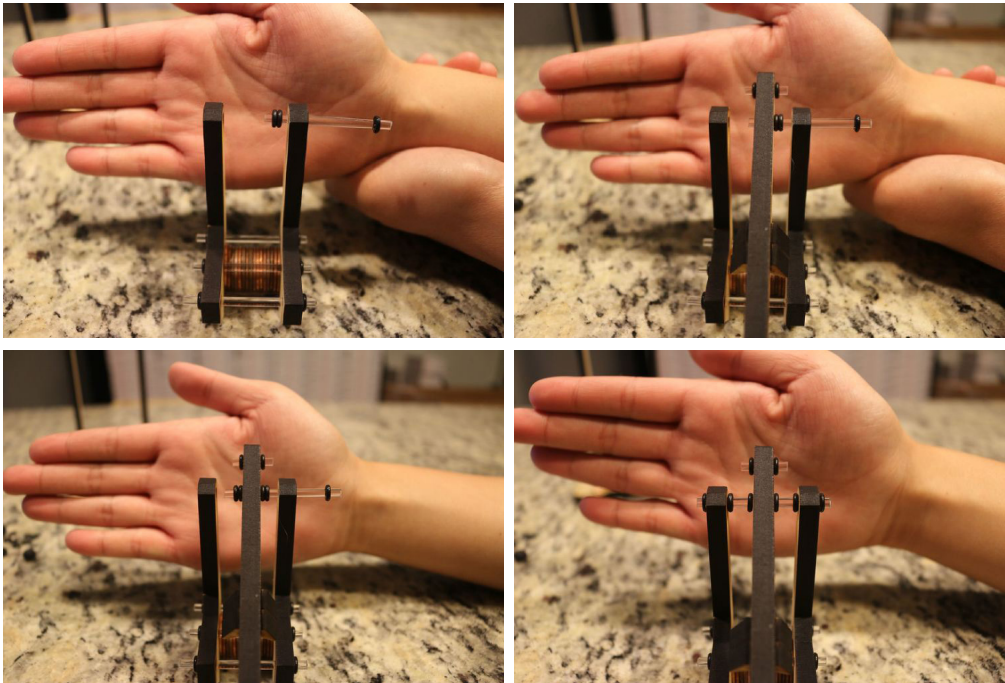


STEP 2D

Insert your pennies. Fit the other basket side through the rods and secure each rod end with an o-ring.
Take time to center your counterweight basket.

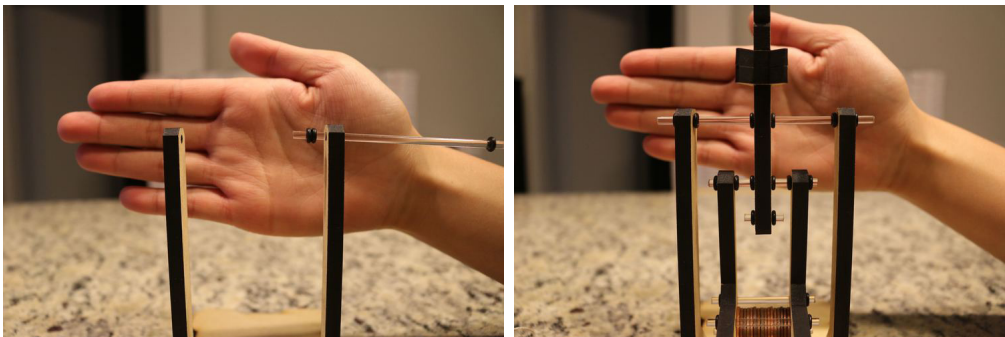


ASSEMBLY - PART III



STEP 2E

Insert a medium rod through one basket side and immediately meet it with 2 o-rings. Hold the arm in between the basket sides, push the rod through the second arm hole and immediately meet it with 2 o-rings. Push the rod through the other basket side and secure the end with 1 o-ring. Take your time to center as pictured.



STEP 2F

Similar to the previous step, insert the large rod through one post and immediately meet it with 2 o-rings. Hold the arm in between the posts, push the rod through the third arm hole and immediately meet it with 2 o-rings. Push the rod through the other post and secure the end with 1 o-ring. Again, take your time to center as pictured.

HOW TO LAUNCH



STEP 3A

In order to aim, bend the hook at a slight angle.
Adjust the angle as you prefer in order to alter the trajectory.
Next, hang the projectile of your choice.



STEP 3B

Lift the counterweight basket over the arm
and hook the jump ring onto the tail rod.



YOU ARE READY TO LAUNCH!