

FUJITSU

# ScanSnap

## SV600

Simple, Speedy & Compact.  
From Paper to PDF in one touch!

NEW

### Enhanced with new features

- Minimize unevenness in image quality with "VI technology"
- Automatically cropping of several documents with "Multiple Document Detection"
- Shorten operating time with "Page Turning Detection"
- Correct distortion and curviness of books with "Book Image Correction"

### Premium bundled Software (Win)

- Rack2-Filer Smart with Magic Desktop
- Adobe® Acrobat® Standard
- CardMinder



shaping tomorrow with you

# A New Perspective on scanning



**ScanSnap**  
SV600

Digitize anything with ease

Scan newspapers, magazines or books directly.

## Scan anything from business cards to 279.4 x 431.8 mm (11x17in.) size (landscape)\* documents

No more hassle to cut or fold documents larger than legal size such as newspapers and magazines, simply position the documents and they can be scanned directly without any extra effort.

\* The maximum document size will be 400 x 300 mm (15.75 x 11.81 in.) when the thickness of the document is over 5 mm (.197 in.)

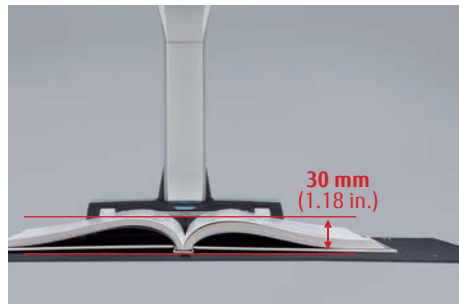
## Easily scan thick documents\*

Not only bound documents, but also documents with sticky notes or photographs can be scanned directly without any difficulty.

\* Maximum document thickness is 30 mm (1.18 in.)

## Now scan delicate documents

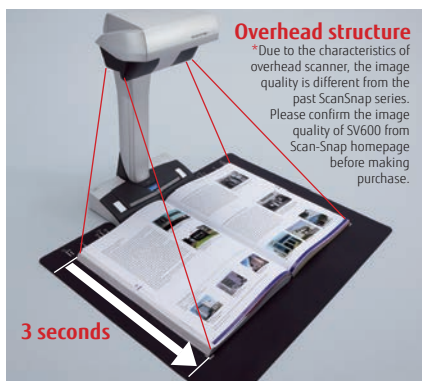
With "VI technology", scanning can be performed without touching the document. No need to worry about passing your document through a feeder.



## New VI technology\*

(\*VI technology: Versatile Imaging technology)

Equipped with "VI technology" which combines a deep depth of field lens, a CCD linear image sensor and High directivity LED lamp, the SV600 is able to minimize unevenness in image quality and generate a smooth image even when scanning from a distance.



### Deep depth of field lens

Wide auto focus area (even the focusing distance has changed)

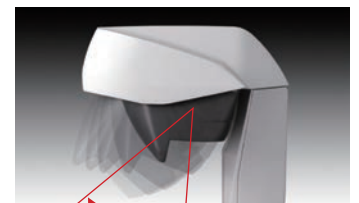
### CCD linear image sensor

Produce steady images



### High directivity LED lamp

Maintain same brightness without affecting by the surrounding



Scan by moving the head

## Smooth operation with the support of various functions

SV600 is enhanced with new customized features while continuing ScanSnap the concept of simple, speedy and compact.

### Quick Menu saves time!



#### Quick Menu: Favorites

Icons of frequently used applications are displayed.

ScanSnap's Quick Menu automatically pops up after scanning so you can quickly and easily link the data to an application. Simply choose and click the application icon when the Quick Menu appears.

Enjoy enhanced operability with these two new features:



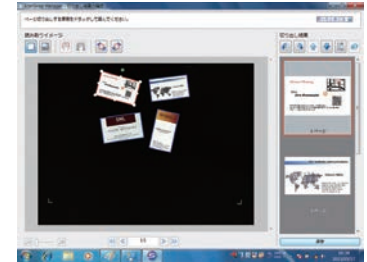
#### Quick Menu: Recommended

Icons of the recommended applications are displayed in priority.

### Automatically crop several documents with "Multiple Document Detection"\*

The one touch/one scan "Multiple Document Detection" feature saves time and hassle by cropping several documents at the same time. Simply place multiple documents in the scan area and let the SV600 intelligently scan and crop your items.

\* Up to 10 documents can be cropped automatically. At least 15 mm (.60 in.) is needed between documents.



### Fast start up time and scanning speed lead to time saving and efficiency

With a quick start-up time you will be ready to scan in only 3 seconds after switching on the scanner. It also takes less than 3 seconds to scan large 11"x17" documents.

### Compact design has small footprint on work space

The compact design gives the SV600 a small footprint taking up much less valuable desktop work space. Unlike a flatbed scanner, space is only needed to place documents when scanning. When the scanner is not in use, the valuable desk space is available for other uses.

## Create your own digital books

ScanSnap SV600 is your ultimate partner to scan documents efficiently subject to applicable laws. It comes with easy to use "Rack2-Filer Smart with Magic Desktop" software providing enhanced functionality. With this world class hardware/software combination, you can generate easy to access image files or organize and read your own scanned digital documents.

#### Step 1

##### Scan with one touch!

Updated features, allow you to continuously scan multiple pages smoothly.

##### Page Turning Detection

Automatically detect when a page is turned.

##### Timed Mode

- Set the time to start scanning after the "Scan" button is pressed.
- (When continuously scanning) set the time interval before the next scan begins.

#### Step 2

##### Auto image correction

Image Correction – automatically corrects distortion caused by the curve of an opened document. Confirm and fine tune the scanned images with the preview dialog feature after scanning.



##### Book Image Correction

You can easily correct distortion of any document.



##### Point Retouch function

Finger images scanned while holding a document can be easily deleted.



#### Step 3

##### Go paperless with digital filing

The new feature of "Rack2-Filer Smart with Magic Desktop", "Easy book creation", is especially added for SV600. You can divide pages and create thumbnail using the scanned front and back cover of the book after scanning.



Rack2-Filer Smart with Magic Desktop



Easy Book Creation

#### Step 4

##### Organizing and Viewing on the go

Carry your scanned documents with you anywhere anytime; you can conveniently browse your scanned digitalized document from your tablet or Smartphone. "Rack2-Filer Smart with Magic Desktop" manages and organizes all your scanned images while providing you with excellent flexibility to utilize data in many ways.

## ■ General Specifications

Description		ScanSnap SV600
Scanner type		Over Head system, simplex scanning
Scanning modes		Color, grayscale, monochrome, Automatic (color, grayscale, monochrome detection)
Image sensor		Lens reduction optics / color CCD x 1
Light source		(White LED + lens illumination) x 2
Optical resolution		Horizontal scanning: 285 to 218 dpi, Vertical scanning: 283 to 152 dpi*1
Scanning speed (A3 landscape)*2	Auto mode*3	*Better mode* or *Best mode*: 3 seconds / page
	Normal mode	Color / Grayscale: 150 dpi, Monochrome: 300 dpi 3 seconds / page*4
	Better mode	Color / Grayscale: 200 dpi, Monochrome: 400 dpi 3 seconds / page*4
	Best mode	Color / Grayscale: 300 dpi, Monochrome: 600 dpi 3 seconds / page*4
	Excellent mode	Color / Grayscale: 600 dpi, Monochrome: 1,200 dpi 3 seconds / page*4
Document size		Automatically recognizes document size, A3(landscape), A4(landscape), A5(landscape), A6(landscape), B4(landscape), B5(landscape), B6(landscape), Post card, Business card, Double Letter(landscape), Letter, Legal(landscape) and Customized size (Max: 432 x 300 mm (17.0 x 11.8 in.), Min: 25.4 x 25.4 mm (1 x 1 in.)*5
Document thickness		30 mm (1.18 in.) or less
How to start scanning*6		Select one of the below. 1. Normal scan: Press "Scan" button for every page 2. Timed Interval Scanning (Timed Mode) 3. Page turning detection
Interface*7		USB2.0 / USB1.1 (connector: B Type)
Image processing functions		Deskew by text on document, Auto paper size detection, Auto image rotation, Auto color detection, Book image correction,*8 Multiple document detection*9
Magnification in vertical scanning (length)		±1.5%
Power requirement		AC 100 to 240 V, 50 / 60 Hz
Power consumption		During operation: 20 W or less During sleep mode: 2.6 W or less During standby: 0.4 W or less
Operation environment		Temperature: 5 to 35 °C (41 to 95 °F) Relative humidity: 20 to 80 % (Non-condensing)
Dimensions (W x D x H)		210 x 156 x 383 mm
Device weight		3 kg (6.613 lb)
Environmental compliance		ENERGY STAR® / RoHS
Driver		Specific driver (Does not support TWAIN / ISIS™)
Bundled software	Scanner driver	ScanSnap Manager V6.2
	File management	ScanSnap Organizer V5.1
	Business card management	CardMinder™ V5.0
	PDF editing	Adobe® Acrobat® Standard
	Text recognition	ABBYY FineReader for ScanSnap™ 5.0
	Document filing	Rack2-File Smart with Magic Desktop V1.0
	Evernote	Evernote for Win 4.5
	ECM linkage software	Scan to Microsoft® SharePoint® 3.4*10

- \*1 Optical resolution differs due to different scanning angle on the same document.  
 \*2 Scanning speed may vary due to the system environment used.  
 \*3 Switch between "Better mode" and "Best mode" depends on the length of the document. A4 (portrait): 200 dpi, A6 size or below: 300 dpi  
 \*4 Time between actual start of scanning (scanning pad) and finish scanning.  
 \*5 For documents of thickness over 5 mm, the maximum document size is 400 x 300 mm.  
 \*6 When performing continuous scanning, time is needed for the scanning head to return to its original position.  
 \*7 Compatible with USB3.0 port but connection will run as USB2.0 speed.  
 \*8 Automatically correct distortion caused by the curve of an opened book or magazine.  
 \*9 Digitize multiple documents by automatically cropping several documents in one scan.  
 \*10 The software is available to be downloaded from ScanSnap website.

## ■ Included items

- AC cable
- Background Pad
- AC adapter
- Set-up DVD-ROM
- USB cable
- Adobe® Acrobat® DVD-ROM
- Rack2-File Smart with Magic Desktop DVD-ROM
- Extenders (x2)


## ■ Option

Description	Part number	Remarks
Background Pad	PA03641-0052	Set in front of the scanner when scanning. *One pad is bundled with the scanner.

This scanner is designed to digitize materials that can be reproduced lawfully, in accordance with applicable copyright regulations and other laws. ScanSnap users are responsible for how they use this scanner. It is imperative that ScanSnap users comply with all applicable local rules and laws, including, without limitation, copyright laws when using this scanner.

■ ABBYY™ FineReader™ Engine ©2011 ABBYY. OCR by ABBYY ■ ABBYY and FineReader are trademarks of ABBYY. ■ Adobe, Acrobat are either registered trademarks or tradenames of Adobe Systems Incorporated in the United States and/or other countries. ■ Evernote is a registered trademark or trademark of Evernote Corporation. ■ Android is registered trademarks or trademarks of Google Inc. ■ Intel, Pentium, and Intel Core are registered trademarks or trademarks of Intel Corporation in the United States and other countries. ■ ISIS™ is a registered trademark of EMC Corporation in the United States. ■ iPad, iPhone and iPod touch are trademarks of Apple Inc. ■ Microsoft, Windows, Windows Vista, PowerPoint and SharePoint are either registered trademarks or trademarks of Microsoft Corporation in the United States and/or other countries. ■ ScanSnap, ScanSnap logo, ScanSnap Manager, ScanSnap Organizer, CardMinder, Rack2-File Smart and Magic Desktop are registered trademarks or trademarks of PFI LIMITED in Japan. ■ Other company names and product names are the registered trademarks or trademarks of the respective companies.  
14.1754

For more ScanSnap related information, visit our Web site at: <http://scansnap.fujitsu.com/>

 Safety Precautions	Be sure to carefully read all safety precautions prior to using this product and use this device as instructed.	Do not place this device in wet, moist, steamy, dusty or oily areas. Using this product under such conditions may result in electrical shock, fire or damage to this product.
	Specifications are subject to change without notice.	

## ■ ScanSnap SV600 System Requirements

Compatible operating systems		Windows® 8 (32-bit / 64-bit)*1	Windows® 7 (32-bit / 64-bit) SP1 or later	Windows Vista® (32-bit / 64-bit) SP2 or later	Windows® XP (32-bit) SP3 or later
Driver / Applications*2	ScanSnap Manager V6.2	Supported	Supported	Supported	Supported
	ScanSnap Organizer V5.1	Supported	Supported	Supported	Supported
	CardMinder™ V5.0	Supported	Supported	Supported	Supported
	ABBYY FineReader for ScanSnap™ 5.0	Supported	Supported	Supported	Supported
	Scan to Microsoft® SharePoint® 3.4	Supported	Supported	Supported	Supported
	Adobe® Acrobat® Standard*3	Please refer to the Web site of Adobe Systems Incorporated for latest support information.			
Hardware requirements*4	CPU*5	Intel® Core™ i5 2.5 GHz or higher			
	Memory capacity*5	64-bit: 4 GB or more 32-bit: 4 GB or more			
	Display	1,024 x 768 pixels or more	800 x 600 pixels or higher		
	Disk capacity*6	4,350 MB free hard disc space for installation			
	DVD-ROM drive	Required for installation*7			
USB port*5*8	USB 3.0 / USB 2.0 / USB 1.1				

- \*1 Function as a desktop application.  
 \*2 Please refer to the ScanSnap Web site for latest support information.  
 \*3 Requires Internet Explorer 7.0 or later; or, Firefox 3.5 or later.  
 \*4 The ScanSnap device may not work if the connected computer does not meet these requirements.  
 \*5 Scanning speeds may drop if recommended CPU, memory capacity and USB 1.1 requirements are not met.  
 \*6 .NET Framework 3.5 SP1 will be installed (requires 500 MB of disk space) together with either ScanSnap Manager, ScanSnap Organizer or CardMinder™ for systems that do not have .NET Framework 3.5 SP1 installed.  
 \*7 Refer to the website if do not have a DVD-ROM drive. <http://scansnap.fujitsu.com/g-support/en/>  
 \*8 ScanSnap operates on both USB2.0 and USB3.0 without any difference in performance.  
 \* System requirements may change depending on the duration of support and the support policy of the companies that make the software listed in the table above.

## ■ Rack2-File Smart V1.0 / Magic Desktop V1.0\*1\*2 System Requirements

Compatible operating systems		Windows® 8 (32-bit / 64-bit)*3	Windows® 7 (32-bit / 64-bit) SP1 or later	Windows Vista® (32-bit / 64-bit) SP2 or later	Windows® XP (32-bit) SP3 or later
Hardware requirements	CPU	Intel® Pentium® 4 1.8 GHz or higher (Recommended: Intel® Core™ 2 Duo 2.2 GHz or higher)			
	Memory capacity	2 GB or more (Recommended: 4 GB or more)			
	Display	1,024 x 768 pixels or higher			
	Disk capacity	*5	64-bit: 2 GB or more		-
	System drive*4	32-bit: 850 MB or more			
Installation drive	1 GB or more disc space for each software* * Additional space is required for the data created by Rack2-File Smart and Magic Desktop				
Supported scanners		ScanSnap SV600, iX500, S1500, S1300i, S1300, S1100			
Supported mobile devices	iOS	Model	iPad series, iPhone series (4 or later), iPod touch series (4th generation or later)		
		OS	iOS 4.3 or later		
		Applications	Rack2-File Smart for iOS 1.1.0 or later		
	Android	Model	ARM compatible processor		
		OS	Android OS 2.2 or later		
		Memory capacity	512 MB or more		
Applications	Rack2-File Smart for Android 1.1.1 or later				

- \*1 Please refer to the Rack2-File Smart Web site and the Magic Desktop Web site.  
 \*2 When installing Magic Desktop, Internet connection is required.  
 \*3 Rack2-File Smart and Magic Desktop runs as a desktop application.  
 \*4 This is the free capacity required when .NET Framework 4 or later is not installed.  
 \*5 Disk capacity is not necessary as Microsoft® .NET Framework 4.5 is included in Windows® 8.

## ■ Cleaning Materials

Description	Part number	Remarks
Cleaner F1	PA03950-0352	100 ml bottle For cleaning the glass, camera, lamp etc of the scanning head.
Cleaning Cloths	PA03950-0419	1 pack (20 sheets) Wet tissue with "cleaner F1". For cleaning the glass, camera, lamp, etc. of the scanning head.

**POWERED BY**




ABBYY™ FineReader™ Engine ©2011 ABBYY. OCR by ABBYY  
 ABBYY and FineReader are trademarks of ABBYY.

PFI LIMITED, a Fujitsu company, has determined that this product meets the ENERGY STAR® guidelines for energy efficiency. ENERGY STAR® is a registered trademark of the United States.

