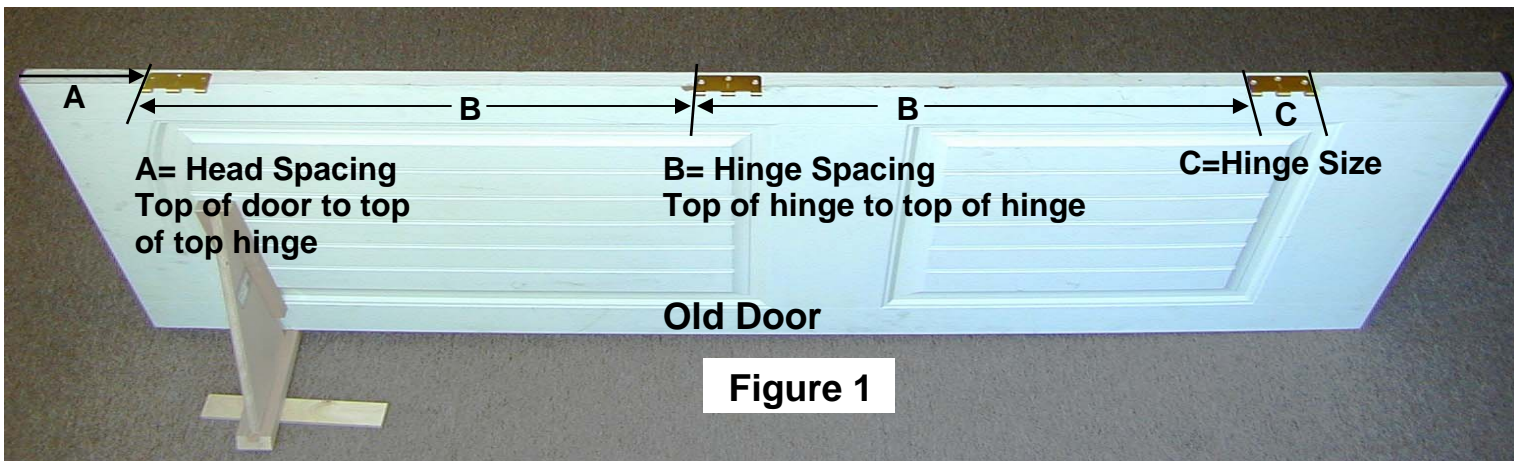


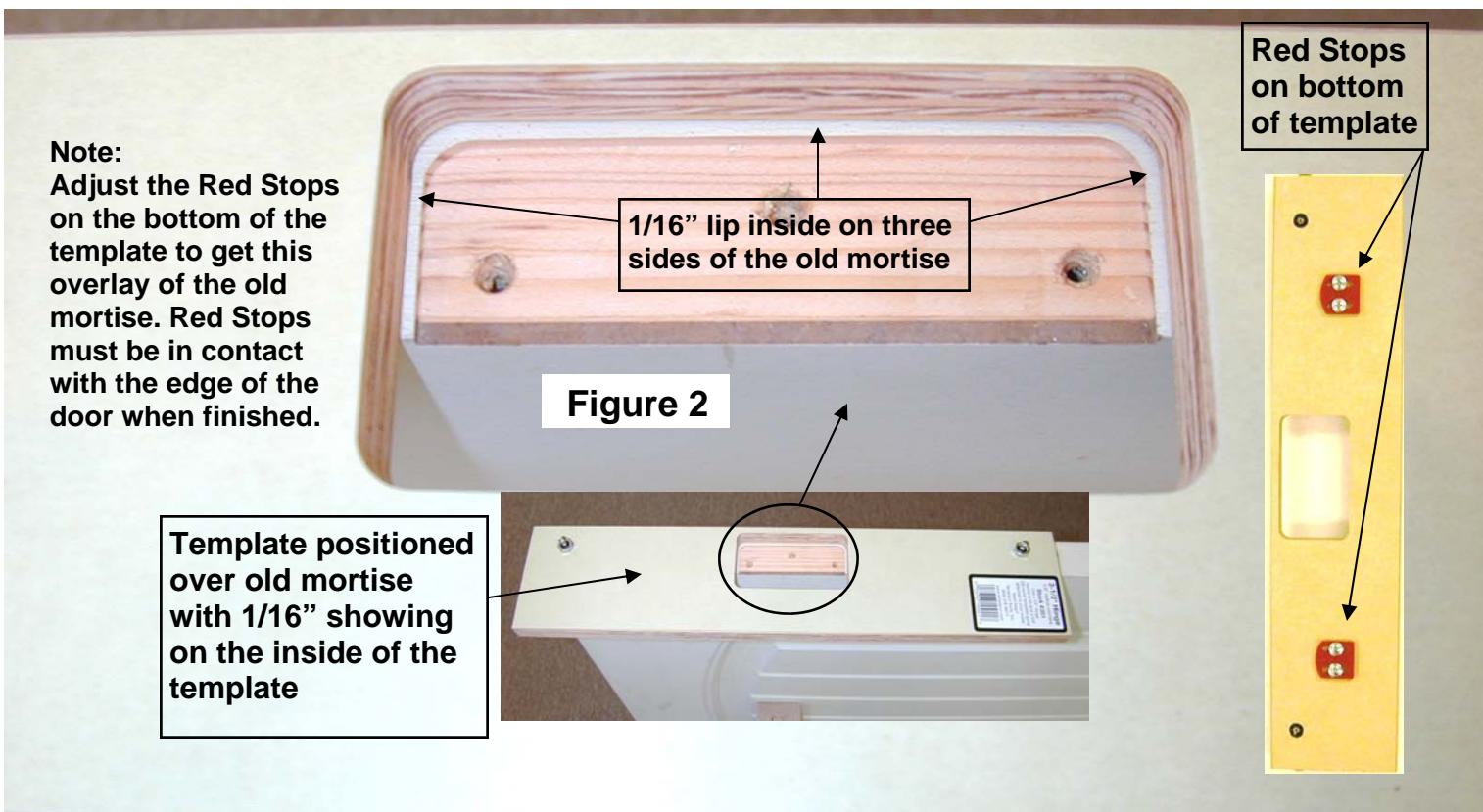
# How To Use The Single Pocket Hinge Template

## Installing a New Door into an existing opening using the old hinge mortises

1. Using the old door with hinges removed, starting at the top of the door place the template with the template pocket over the old mortise on the top hinge location. Align the template so when looking into the template pocket you can see the entire old mortise. The template will be 1/16 of an inch larger on all sides of the old mortise so you should be able to see this distance on all three sides. **Note: the red plastic stops on the bottom of the template must touch the edge of the door. (see figure 2).** If your template sits too far out or too far in on the old door and you don't have the 1/16 of an inch at the back side of the old hinge mortise, make the appropriate adjustments on the two red plastic stops to achieve this setting. **The above action sets the template to match the old hinge mortise position and backset position.** Now without moving the template, nail the template onto the old door using the Double Headed Nail Assemblies that are attached to your template. **(see figure 2)**
2. With a sharp pencil draw a line on the old door edge, holding the pencil point tight against the bottom edge of the template. **(see figure 3)**
3. Remove the template from the old door by pulling straight up on the template or use the very tip of a claw hammer just under the head of the nail to gently pry up the nails. Now measure the distance from the top of the old door to the pencil line. **Accuracy here is important.** Transfer this same measurement to the **new door**. Make a pencil line on the new door, measuring from the top of the new door. **(see figure 3)**
4. Place your template on the new door using the pencil line as your reference point. Again accuracy here is important. Attach the template to the door using the nail assemblies on the template. **Make sure that the red plastic stops on the back of the template are touching the edge of the door when you nail down the template.**
5. Using your router with a 5/8 inch outside diameter template guide (see stock number TG-1) and a 1/2 inch hinge mortising bit (see stock number CB-1) or our Universal Cutter with the 5/8 inch top mounted bearing (see stock number CB-4) mortise the new door. **Caution: be sure to set the router depth before you make your cut, do a practice mortise on a scrap of wood or the old door first.**
6. After routing the first mortise for the top hinge on the new door remove the template.
7. Now go back to the old door and measure from the **top** of the top hinge to the **top** of the next hinge. This measurement is the **(Hinge Spacing)** and will be the distance that you will move the template down the door from the first position to get the second hinge position. **(see figure 1 & 4)**
8. Transfer this measurement to the new door by using the first pencil line that you made on the new door as your starting point. You will make another pencil line on the door at this new measurement. **(see figure 4)** This will be the distance that you will move the template from the top hinge position and will be the new position of the template for the second hinge position.
9. Attach the template using the new pencil line as your location point. Mortise the second hinge using your router as you did on the first hinge.
10. Repeat this operation for each hinge location.

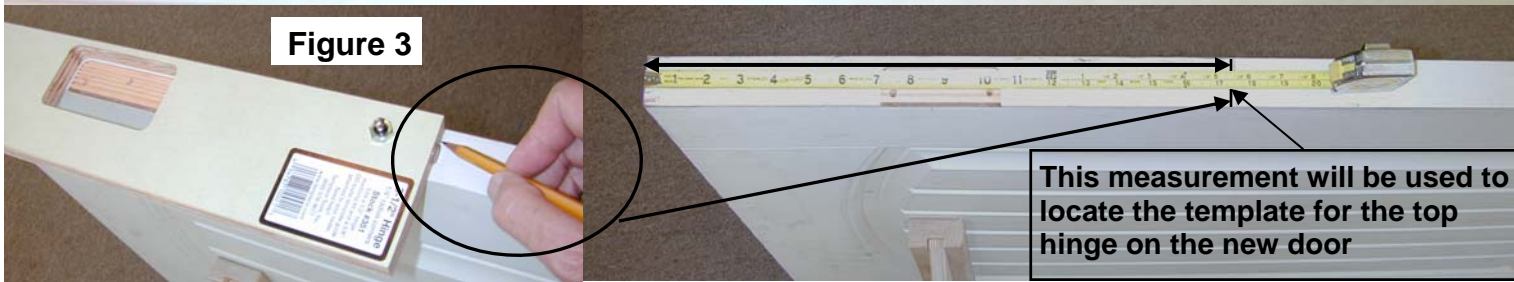


**Figure 1**



**Figure 2**

Template positioned over old mortise with 1/16" showing on the inside of the template



**Figure 4**

