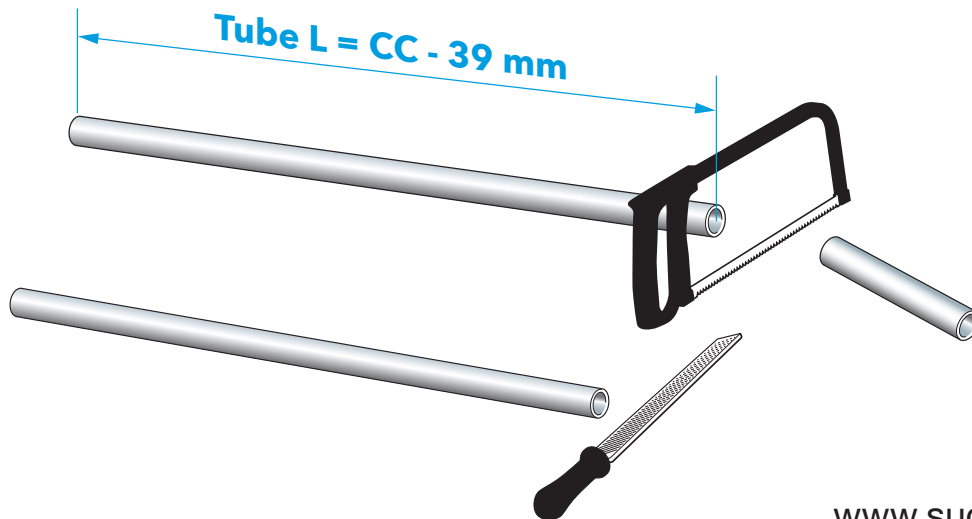
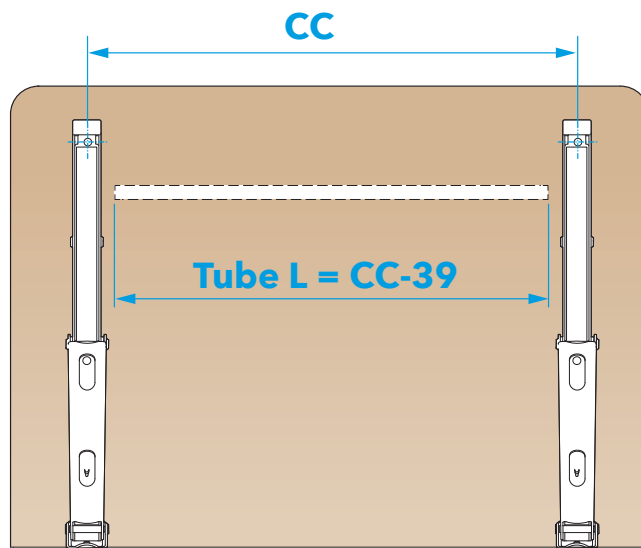


WITH LOCKING FUNCTION

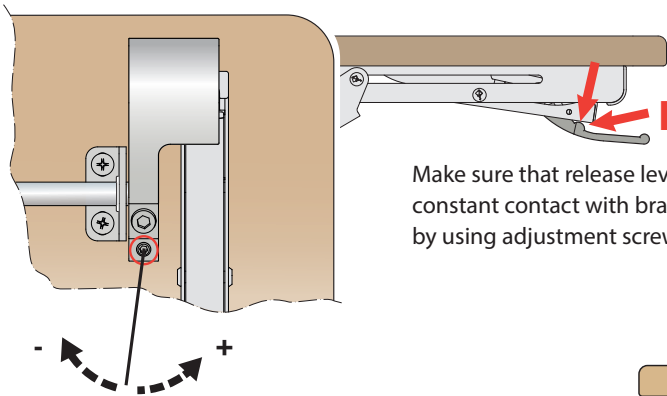
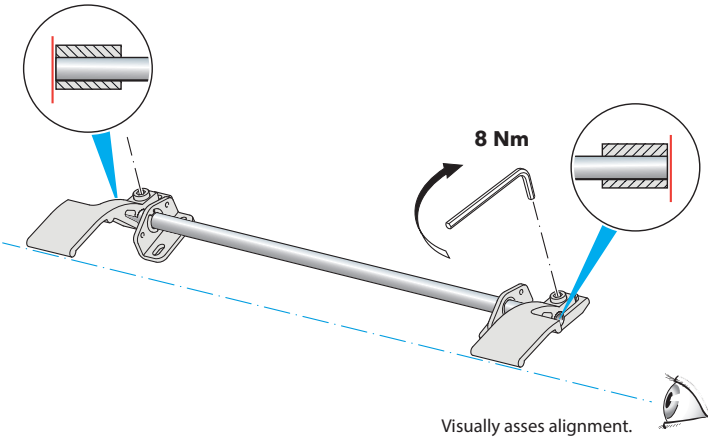
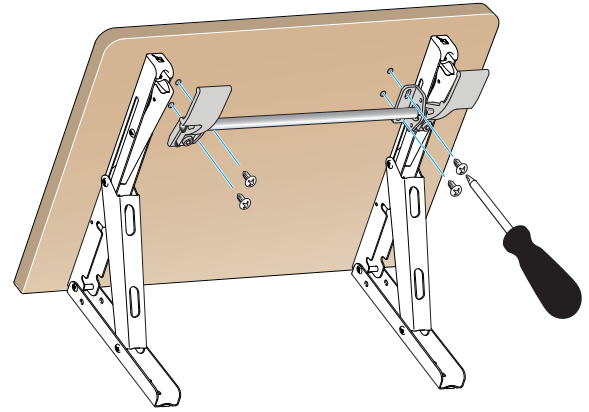
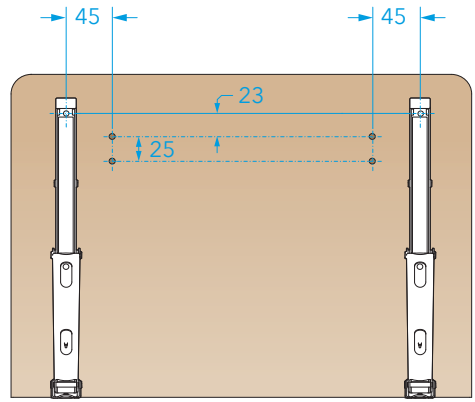


Extra for long tube >0,7 m



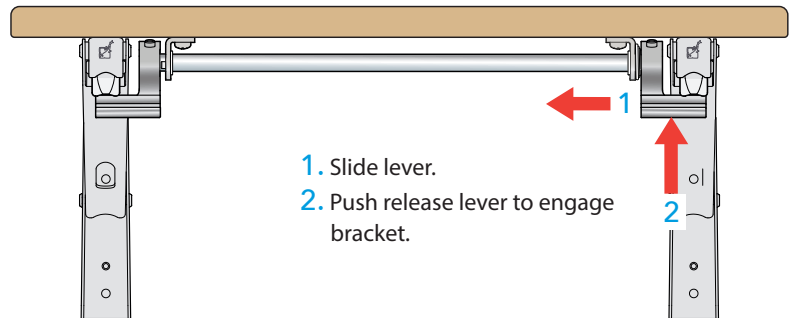
Note

Follow diagram above for insert order and orientation. Spring and safety lock screw must be installed on opposite ends.



Note

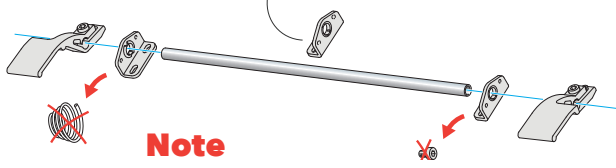
Make sure that release lever makes constant contact with bracket lever by using adjustment screw.



1. Slide lever.
2. Push release lever to engage bracket.

WITHOUT LOCKING FUNCTION

Extra for long tube >0,7 m



Note

Spring and safety lock screw not needed.

