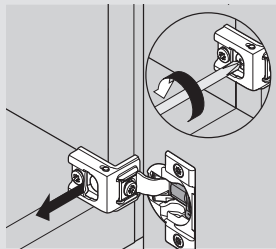


# COMPACT BLUMOTION — Angle restriction clip

## Assembly instructions

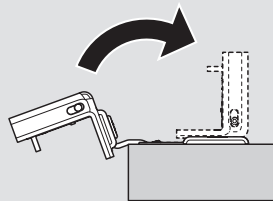
### Step 1 — Remove door

Loosen and remove installation screws.



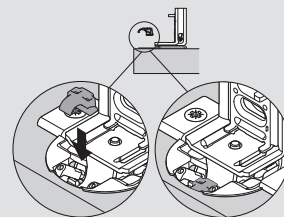
### Step 2 — Rotate hinge arm

Rotate hinge arm to closed position.  
“click”



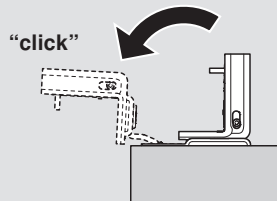
### Step 3 — Insert angle restriction clip

Insert angle restriction clip (38C315B3.1) into base of hinge arm.



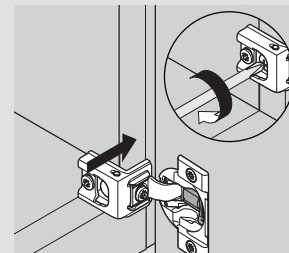
### Step 4 — Rotate hinge arm

Rotate hinge arm to open position to secure.



### Step 5 — Reattach door

Align door and reattach by inserting and tightening installation screws.



**NOTE:** Restriction clip limits door opening angle to 86°