



# Less work. More hash.

**Hash Washing  
& Freeze Drying**  
2021/22 Product Catalog





**PurePressure's Bruteless  
hash washing systems set the  
standard for excellence.**

**Make better hash  
and a lot more of it.**

# What is ice water hash?

Ice water hash, which is also known as bubble hash, consists of pure, isolated, trichome heads and stalks. When done properly, this is the best resin that the cannabis plant has to offer, and can be enjoyed as-is or pressed into a variety of different types of premium rosins.



Fresh frozen or dry flower/trim



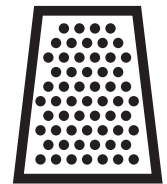
Washed in Bruteless



Filtered through bubble bags



Freeze dried



Finished product

**Bruteless™ vessels can make every type of ice water hash, including full melt or six star hash, which is sought after by connoisseurs the world over.**



Full spectrum ice water hash



6 star full melt hash



Hash rosin

## Endless possibilities

# Bruteless Hash Washers

## Elevate your solventless bubble hash production.

### FDA Recognized Food Contact Safe Materials

Bruteless vessels are FDA food grade contact compliant and feature sanitary welded stainless steel. Extremely easy to clean with no nooks or crannies for bacteria/mold to grow.



### Removable False Bottom

A removable stainless steel false bottom protects your trichomes during the wash process, keeping your ice and work bags 3" above your hash. Integrated baffles create a turbulent-free zone at the bottom for gentler resin isolation.



### Cryogenic Insulated Sleeve

Thick 1" cryogenic insulated sleeve dramatically reduces ice usage by up to 50%. The Bruteless™ vessels can maintain a constant temperature of 34°F for 90 minutes or more with only one load of ice.



### Strategically Placed Ports

Each washer offers multiple ports: to drain, fill, skim, view, and more. These ports allow you to see your yields as you wash, maintain accurate water temperatures, and save time on fluid management. A sturdy stainless steel lid is also included.



Potential labor savings of up to 60%, or up to \$67,200 per year



Cuts drain and wash time in half or more



Reduces ice usage by half or more



Multiple drain valve locations to hook up a recirculating system for maximum efficiency

# Return on Investment

Based on 8hr work day | Yield range per day: (3-6% fresh frozen to dry hash weight) | Revenue based on conservative \$30/per gram wholesale price



## 20 Gallon 2 ports \$995

Return on equipment investment within 2 days at 4% yield

11+ lbs of fresh frozen per day

Yield range per day

150g - 300g

Max volume per wash

2,500g

**\$4,500 - \$9,000 revenue per day**

Volume per day

5,000g

Two batches, washed 3x each



## 30 Gallon 4 ports \$2,495

Return on equipment investment within 2 days at 4% yield

22+ lbs of fresh frozen per day

Yield range per day

300g - 600g

Max volume per wash

5,000g

**\$9,000 - \$18,000 revenue per day**

Volume per day

10,000g

Two batches, washed 3x each



## 44 Gallon 4 ports \$2,995

Return on equipment investment within 1 days at 4% yield

44+ lbs of fresh frozen per day

Yield range per day

600g - 1,200g

Max volume per wash

10,000g

**\$18,000 - \$36,000 revenue per day**

Volume per day

20,000g

Two batches, washed 3x each



## 65 Gallon 5 ports \$3,845

Return on equipment investment within 1 days at 3% yield

66+ lbs of fresh frozen per day

Yield range per day

900g - 1,800g

Max volume per wash

15,000g

**\$27,000 - \$54,000 revenue per day**

Volume per day

30,000g

Two batches, washed 3x each

The

# Axis

## Trichome Separator



Starting at  
\$27,500  
+ shipping & handling

### Less work, more hash

The Axis trichome separator system is the latest evolution in solventless processing technology, enabling hash makers to greatly increase efficiency and throughput of their hash washing process. By separating the source of agitation from the vessel, the Axis allows operators to simultaneously wash in one vessel, while pre-soaking, settling, draining, and filtering in others.

### Mimics hand paddle agitation

By utilizing an ultra low shear gearbox-adjusted servo motor instead of high shear impellers common in other trichome separators, the Axis mimics hand paddle control so that users can make any type of ice water hash SKU with ease. The joystick paddle controller is combined with the Pressware™ touchscreen interface, which enables operators to easily create their own custom hash washing recipes or use factory tuned pre-loaded ones for true washing consistency from batch to batch.

### Massive throughput and quick ROI

Wash, filter, and collect up to 132 lb (60,000 grams) or more of fresh frozen material per 9 hour shift with the Axis trichome separator. ROI is achievable in 2 months or less for most operations, and labor savings ROI alone is often achieved versus hand-washing in 6 months or less.

### Backwards compatible with most existing Bruteless vessels

The Axis trichome separator system is backwards compatible with existing 30, 44, and 65 gallon Bruteless hash washing vessels. With its quick change paddle system, you can easily swap paddles to wash in different sized vessels depending on your batch size and needs.



**Configure your Bruteless hash washing system to meet your operation's unique needs.**





# Recommended Configurations

**Please note:** The stainless steel platform pictured to the left is not included with these kits but is available for only \$1,999.



## Commercial Configuration \$12,995

### Equipment Included:

- |                          |  |
|--------------------------|--|
| 65 Gallon Bruteless (1)  | Bruteless™ Temperature Gauge 1.5" (1)  |
| *44 Gallon Bruteless (2) | 4" Straight Piece (1)                  |
| Ball Valve 1.5" (6)      | Clamps & Gaskets                       |
| 90 Degree Elbow 1.5" (9) | Hash Washing Paddle (1)                |
| Check Valve 1.5" (3)     | 44 Gallon Triangular Dolly (2)         |
| Wye - Tri Clamp (2)      | Bruteless Complete 2 Hose Kit (2)      |
| Tee - Tri Clamp (1)      | Bruteless Water Pump with Fittings (2) |
| Sight Glass 2" (1)       |  |

\*Drain vessels come without false bottoms



## Pro Configuration \$10,495

### Equipment Included:

- |                          |  |
|--------------------------|--|
| 44 Gallon Bruteless (1)  | Bruteless Temperature Gauge 1.5" (1)   |
| *30 Gallon Bruteless (2) | 4" Straight Piece (1)                  |
| Ball Valve 1.5" (6)      | Clamps & Gaskets                       |
| 90 Degree Elbow 1.5" (9) | Hash Washing Paddle (1)                |
| Check Valve 1.5" (3)     | 30 Gallon Triangular Dolly (2)         |
| Wye - Tri Clamp (2)      | Bruteless Complete 2 Hose Kit (2)      |
| Tee - Tri Clamp (1)      | Bruteless Water Pump with Fittings (2) |
| Sight Glass 2" (1)       |  |

\*Drain vessels come without false bottoms



## Base Configuration \$5,995

### Equipment Included:

- |                          |                                      |
|--------------------------|--------------------------------------|
| 30 Gallon Bruteless (1)  | Bruteless Temperature Gauge 1.5" (1) |
| *30 Gallon Bruteless (1) | 4" Straight Piece (1)                |
| Ball Valve 1.5" (4)      | Clamps & Gaskets                     |
| 90 Degree Elbow 1.5" (1) | Hash Washing Paddle (1)              |
| Sight Glass 1.5" (1)     | 30 Gallon Triangular Dolly (1)       |
|                          | Bruteless™ Complete 2 Hose Kit (1)   |

\*Drain vessels come without false bottoms



**Pure, mechanically separated trichome heads made during the ice water hash washing process.**

The finest resin the cannabis plant has to offer is contained within these small glandular heads.



# Open Hash Washing Liners

PurePressure's custom 220µm open wash liners are the perfect solution to maximize your Bruteless washing system's efficiency and wash volume!

## Premium FDA Food Grade Material

Made with premium FDA compliant nylon mesh and polypropylene canvas for ultimate durability.

## Perfect Fit

The liners were designed to custom fit each Bruteless vessel size maximizing capacity capability.

## No-Slip Grip

Each wash liner features strong draw cord locks to tightly fit around your vessel, ensuring a no-slip grip.

## Durable Lift Straps

Each wash liner also comes with lift straps rated up to a 200lb. max load capacity.



## Available Sizes

**20 Gallon**    \$180

Wash up to 2,500 fresh frozen grams

**30 Gallon**    \$225 | \$330 Dowel-reinforced

Wash up to 5,000 fresh frozen grams

**44 Gallon**    \$275 | \$330 Dowel-reinforced

Wash up to 10,000 fresh frozen grams

*Fits Brute trash cans as well*

**65 Gallon**    \$325 | \$395 Dowel-reinforced

Wash up to 15,000 fresh frozen grams



# Fully Plumbed or Gravity Feed Options Available



## **PurePressure Pneumatic Hash Safe Pump**

\$6,595

The perfect solution for high output labs and operations with low ceilings. This unique, food contact certified pneumatic pump allows you to move trichome-laden water gently and safely for filtration. It's self priming and offers a full adjustable interface to control your flow rate and pressure.



## **Bruteless System Work Platform**

\$1,999

PurePressure's metal hash washing platform is the perfect addition to any ice water hash processing operation. These platforms are OSHA approved, easy to assemble, and most importantly give your team a safe location to wash and drain your ice water hash.

# Bruteless Accessories

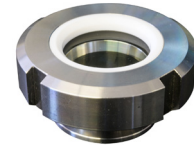
Visit our online shop at [www.purepressure.com](http://www.purepressure.com) for details and pricing.



**Polypropylene  
Hash Washing Paddle**



**Bruteless Water Pump  
w/ Optional Remote  
Control**



**Bruteless Stainless  
Steel Sight Glass Port**



**Bruteless Complete 2  
Hose Kit**



**Sanitary Valves**



**Stainless Steel Fittings**



**Bruteless Thermometer**



**Bruteless Clamps  
and Gaskets**



**Hash Temperature  
Probes**

With even more accessories available on our website, let our experts help you configure the perfect Bruteless system for your needs.



---

Trichome heads being washed viewed through the Bruteless Sight Glass.

# Hash Washing Filtration

**boldtbags**

**Boldtbags are premium quality and made in Humboldt county, California.**

The Boldtbags Full Mesh lineup offers incredible, full sidewall bag filtration for hash makers.

## **Boldtbags Lock Top Full Mesh Stackers**

**4 Bag Kit    20 Gallon    \$600    30 Gallon    \$800    44 Gallon    \$900**

### **Microns Included**

45 µm, 90 µm, 160 µm, 190 µm

**8 Bag Kit    20 Gallon    \$1,000    30 Gallon    \$1,400    44 Gallon    \$1,750**

### **Microns Included**

25 µm, 45 µm, 73 µm, 90 µm, 120 µm, 160 µm, 190 µm, 220 µm



**Bubble Bags are trusted by hash makers across the globe.**

They offer excellent filtration, durability, and a limited lifespan warranty for 200+ washes.

## **Bubble Now 220 Micron Work Bag**

**5 Gallon    \$85    20 Gallon    \$120**



## **The Original Bubble Bags**

**4 Bag Kit    20 Gallon    \$570**

### **Microns Included**

25 µm, 73 µm, 160 µm, 220 µm

**8 Bag Kit    20 Gallon    \$1,025**

### **Microns Included**

25 µm, 45 µm, 73 µm, 90 µm, 120 µm, 160 µm, 190 µm, 220 µm



# Ice Water Hash Freeze Dryers



## Labconco FDry-8L Commercial Freeze Dryer \$17,525

The most advanced hash freeze dryer on the market. This revolutionary freeze dryer offers unmatched variable control, an intuitive, easy to use interface, and much shorter cycle times.

### Capacity Per Cycle\* (lb): 7-9

- Up to 10 days ice retention, freezer grade gasket, 2" polyurethane insulation
- Works with dry ice
- Press & pull latches (wide for gloved use)
- Corrosion resistant stainless steel hardware
- Sloped drain & tethered threaded plug (garden hose attachable)

**Includes a premium Leybold SOGEVAC Neo D 16 vacuum pump**



## Small Pharmaceutical Freeze Dryer \$2,695

### Dimensions

16.5" W x 18.5" D x 25" H

### Capacity Per Cycle\* (lb)

3.75 - 5

\$199 Shipping to the lower 48 †



## Medium Pharmaceutical Freeze Dryer \$3,195

### Dimensions

18" W x 21.25" D x 28.5" H

### Capacity Per Cycle\* (lb)

7 - 9

\$199 Shipping to the lower 48 †



## Large Pharmaceutical Freeze Dryer \$3,995

### Dimensions

20.25" W x 23.75" D x 30.75" H

### Capacity Per Cycle\* (lb)

12 - 14

\$249 Shipping to the lower 48 †

\* Wet weight per run

† International destinations, Canada, and Alaska require additional shipping, so please contact us for a quote.



—  
Freeze dried hash being  
collected.





# PurePressure is your #1 source for Pelican™ lab products.

Professional Lab-Grade Coolers for Fresh Frozen and Hash Storage

**Each cooler has the following features that help ensure your cold product storage is done perfectly every time:**

- Up to 10 days ice retention, freezer grade gasket, 2" polyurethane insulation
- Works with dry ice
- Press & pull latches (wide for gloved use)
- Corrosion resistant stainless steel hardware
- Sloped drain & tethered threaded plug (garden hose attachable)

## **Elite Wheeled 80qt Cooler**     \$514.95

The Best Mobile Cooler Solution Available

- Interior dimensions (LxWxD): 29.00 x 13.00 x 13.00 in
- Exterior dimensions (LxWxD): 42.88 x 20.75 x 20.25 in
- Interior volume: 2.84 ft<sup>3</sup>
- Weight: 49.50 lbs



## **Elite 150qt Cooler**     \$648.95

Extra Volume for Storing More Material

- Interior dimensions (LxWxD): 34.00 x 17.00 x 15.75 in
- Exterior dimensions (LxWxD): 44.88 x 25 x 24.38 in
- Interior volume: 5.27 ft<sup>3</sup>
- Weight: 66 lbs



## **Elite 250qt Cooler**     \$874.95

Maximum Storage Volume for High Volume Labs

- Interior dimensions (LxWxD): 50.25 x 17.00 x 17.50 in
- Exterior dimensions (LxWxD): 61.13 x 27.50 x 27.50 in
- Interior volume: 8.65 ft<sup>3</sup>
- Weight: 92 lbs



# Contact us today to get started with one of our solventless experts.

Email us at [sales@gopurepressure.com](mailto:sales@gopurepressure.com) or call us at **720-446-9565**.

**Factory Hours:** M-F 9am to 4pm (MST)



    | [gopurepressure](https://www.gopurepressure.com)

Shop now at [purepressure.com](https://www.purepressure.com)

Copyright ©2021 PurePressure LLC

# NEED TRAINING?

VISIT [PURECANNALABS.COM](http://PURECANNALABS.COM) TO GET STARTED

---

“ PureCannalabs’s training  
was life changing

- CODY COULSON | OWNER, COULSON CANNABIS | ONTARIO



PureCannalabs

CANNABIS EXTRACTION  
CONSULTING & SOLVENTLESS  
PROCESSING SPECIALISTS

FOLLOW US

